

# SMART **BLU**<sup>TM</sup> 2.0

**The world's easiest, most affordable  
networked lighting controls platform.**

Exclusively From

**USLED**<sup>TM</sup>  
*Always the Right Choice!*

# SMART BLU™ 2.0

No need for LAN, network, or internet access thanks to Bluetooth Mesh



Secure Connection



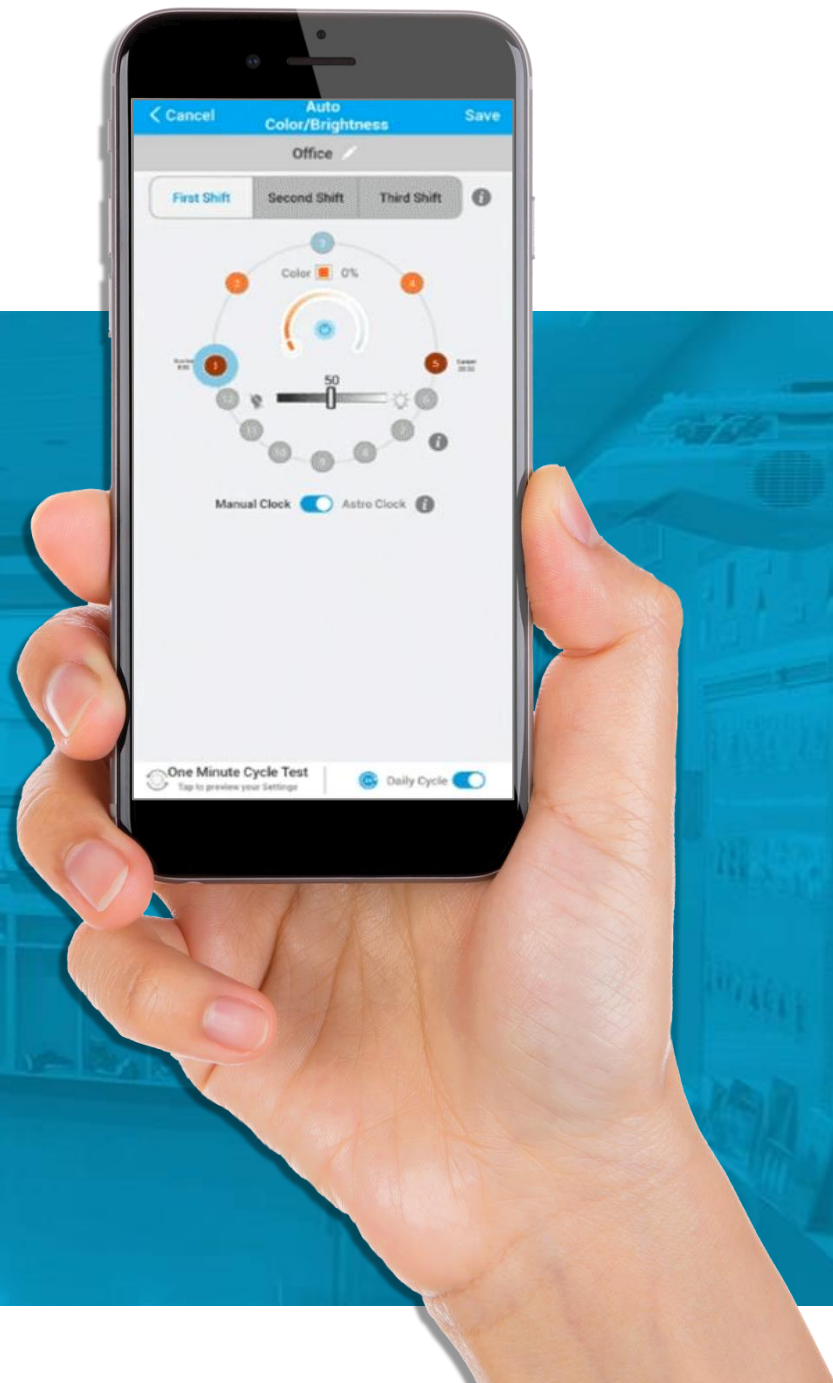
Engineered For Growth



Flexible Lighting Design



Future-Proof Buildings



# SMART BLU™ 2.0

## Optimize Energy Efficiency and Occupant Well-Being

- Classrooms
- Individual Offices
- Open Office Areas
- Conference Rooms
- Office Lobbies
- Healthcare Facilities
- Retail Stores
- Warehouses

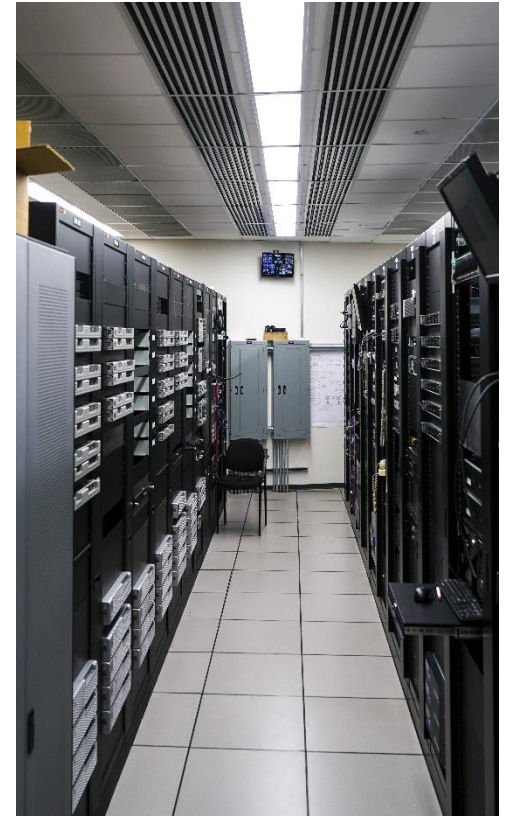




# SMART BLU™ 2.0

## Lighting Control Features

-  **Motion Detection / Photo Control**
-  **Dynamic Tunable White**
-  **Daylight Harvesting**
-  **Circadian Rhythm Control**
-  **Individual Light Settings**
-  **Creating Groups**
-  **Creating Scenes or Zones**



# SMART BLU™ 2.0

COMING  
SOON

## Bluetooth Wall Switch Accessory

COOLER LIGHT  
(CCT UP)

WARMER LIGHT  
(CCT DOWN)

AUTO INDICATOR

AUTO

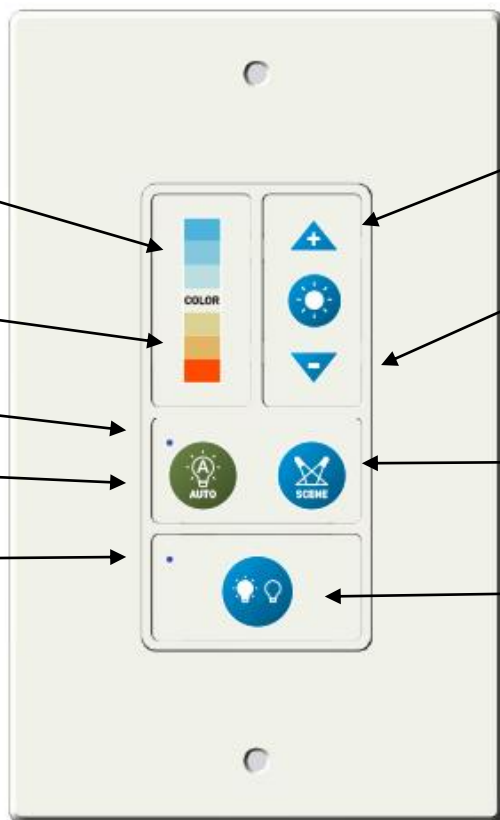
POWER INDICATOR

BRIGHTNESS UP

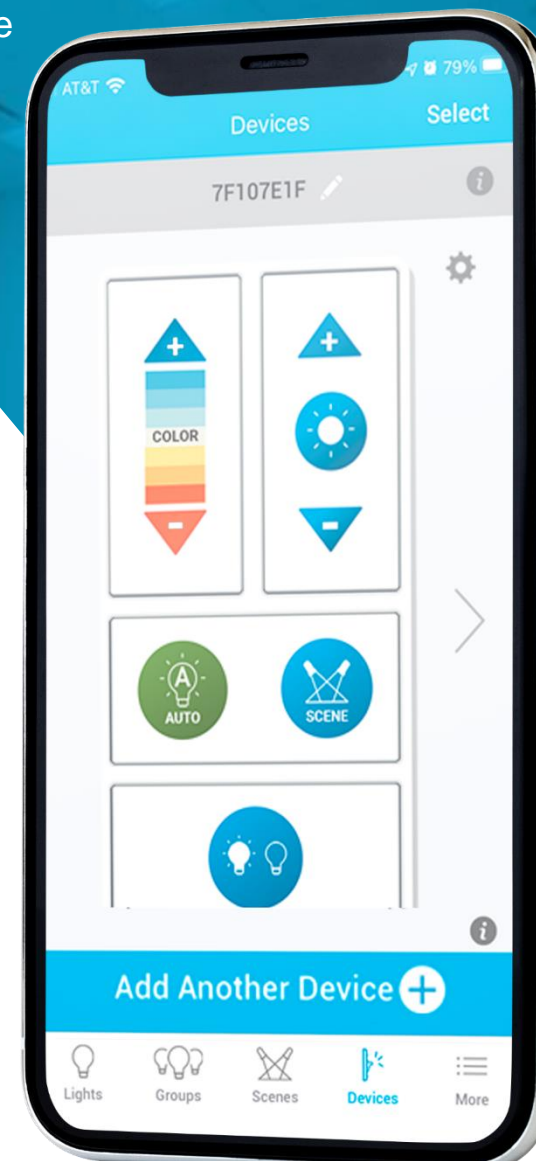
BRIGHTNESS DOWN

3 SCENES CHANGE

ON/OFF



Virtual Wall Switch  
Available in the  
Smart Blu App



The logo for USLED, featuring the letters 'US' in a white outline font and 'LED' in a solid white bold font, with a small 'TM' trademark symbol to the upper right of 'LED'.

# USLED<sup>TM</sup>

*Always the Right Choice!*

Thank You