



ISSUE #11

# THE VANGUARDIAN



## IN THIS ISSUE:

- GM Update
- Winter Products
- Industry Updates
- Case Studies
- Mindfulness
- Product Focus
- Global News
- Team Updates

## Get a free Swanndri!

Mention "The Vanguardian" for all orders over \$2,500 and receive a free Swanndri - RRP \$249

Available in mens and womens. Promo available until end of August 2021.  
1 per order over \$2,500+GST.

# Hello, and welcome to our winter edition of The Vanguardian.

As we continue to experience the ongoing effects of the pandemic, I am constantly reminded of the value of loyal employees. The resilience of Kiwi businesses is very encouraging to see, however one issue we weren't so alert to, was the growing shortage of staff and skills. We can see this starting to cause real concern for a lot of businesses out there. One of our goals is to always be a workplace of choice. A sense of purpose, and contribution to a greater good, can make all the difference in attracting & retaining good people. If you are interested in joining our team then feel free to drop me a line at, [gareth@vanguardgroup.co.nz](mailto:gareth@vanguardgroup.co.nz).

As I write, we have just moved into our new purpose-built building. This is a very exciting step forward for Vanguard and will give us a fantastic environment to continue delivering the support and responsiveness you expect from us. We have fitted out the building with best-practice pedestrian management systems including walkways with D-Flexx barriers and Roger Automatic barriers to create an exclusion zone to the operational yard. If you are in the area anytime we'd be pleased to show you through – contact the team at [sales@vanguardgroup.co.nz](mailto:sales@vanguardgroup.co.nz) and they will arrange this for you.

If you have any safety projects that you are considering and would like to discuss, give us a call and one of our team will help you over the phone or organise to come on site and meet with you in person.

On behalf of the whole Vanguard team, stay safe!



**Gareth McLean**  
Director, GM

## We have moved!

It's official! We have moved in to our new purpose-built warehouse and offices.

We're very excited to have a bigger space which will enable us to stock even more inventory and continue to provide you all with the best service. We will be taking tours of the facility in weeks to come. Please get in touch to register your interest.



*Vanguard's new Head Office in Wellington.*



*Cake and gifts for the Vanguard family on day one!*



*The new flexible workspaces.*

Trusted by these companies to keep their teams safe





# Is Your Site Winter Ready?



## Absorbent Entrance Mat - Paris Mat

SKU: 09-PAR

- Highly durable for high pedestrian traffic areas
- Exceptional absorbency for collecting water and dirt from shoes
- Can be cut to length from a 2m wide roll



## Anti-Slip Stair Nosings

SKU: 11-FSN

- Bevelled leading edge for non-trip
- Heavy duty grit finish
- Will always remain non-trip



## Reflective Conspicuity Tape

SKU: 09-C

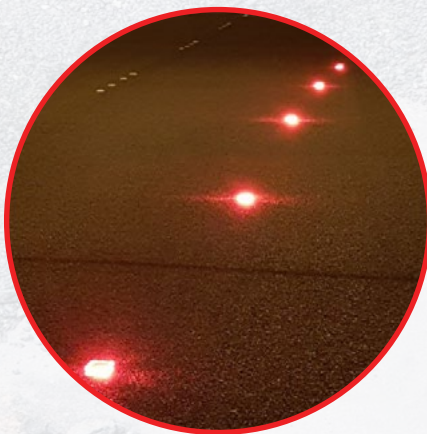
- Highest night time visibility
- Aggressive adhesive system
- Visible up to 300m



## Ground Protection Mat

SKU: 49-GPM

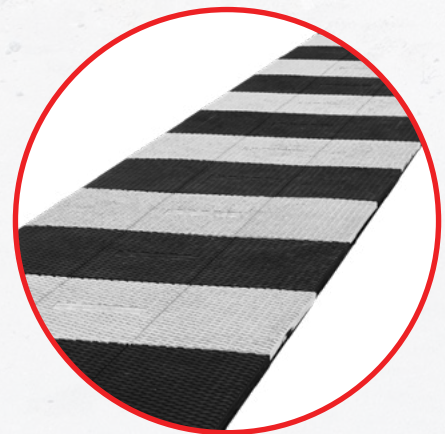
- Enables you to drive vehicles up to 80 tonnes without causing significant damage to the ground underneath
- 100% recyclable
- Simple and fast to install with quick and easy to use connectors.



## LED Sequential Flares - Battery Operated

SKU: 25-SRF

- Easily direct traffic
- 900 metres of visibility
- Five flash patterns to choose from



## Construction Temporary Walkway Mat

SKU: 49-CTWM

- Create temporary walkways for work sites over uneven surfaces
- Can be used as temporary pedestrian crossings
- Made in the UK from 100% recyclable materials



# Workplace Safety Industry Update



**Brendan**

Sales Consultant  
Sector Lead - Workplace Safety  
[brendan@vanguardgroup.co.nz](mailto:brendan@vanguardgroup.co.nz)

It's been a very busy few months with businesses working hard to get their sites safe. Increased stories from Worksafe about accidents in the workplace reflect the need to be extra thoughtful about safety.

It's a delight to see so many business owners putting their team's safety first. Have a read of two examples here where new initiatives have given staff confidence in their daily operations.

## Case Study: Roofing Materials Manufacturer

**Challenge:** The company was looking for a way to protect their team from vehicles and machinery onsite and required a safety solutions plan put in place so they contacted Vanguard.

**Solution:** After onsite consultation, the proposal was signed off to install key safety products strategically on site, and our team then arranged production, delivery and installation.

**Result:** The client is pleased with the solution provided by Vanguard which has given their people safe separation from vehicles and machinery throughout their site. As a result of this new safety setup, staff and visitors alike can move around the facility safely and confidently. And now their team are proud advocates for effective warehouse safety, well done guys!



*Expandable barriers being used to restrict access to potentially hazardous area.*



*Walksafe barriers for guiding pedestrians.*



*Pause Gates slow people before entering areas with moving machinery.*



*Walksafe Pedestrian Barriers create clear walkways and delineation.*



# Food Packaging Manufacturer

Vanguard were called in to work with a large food manufacturing company.

**Challenge:** Being a very large and old site with traffic flow not well designed for current safety requirements, this project was one that tested the capabilities of both our consultants and installers. But with 30 years of experience in the industry, Vanguard were confident in getting the job done to our high standard.

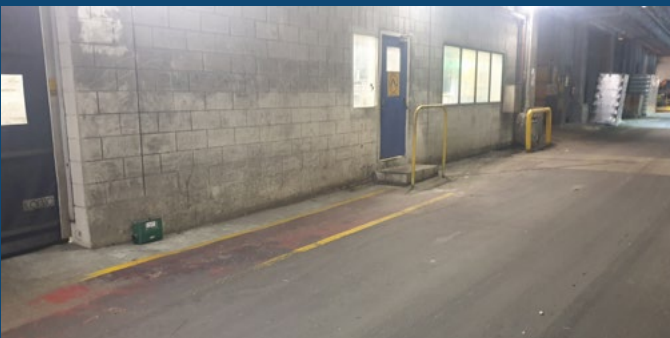
**Solution:** Our facilities expert, Brendan McLean was able to completely scope the site and in conjunction with the site managers and H&S managers, came up with a workable solution that would bring this site up to the safety standard required. We used the WalkSafe Barrier System to segregate pedestrians and vehicles. These systems employ a Pause Gate which stops pedestrians from walking suddenly in to moving traffic.

For areas that needed temporary exclusion zones, we used Expandable Barriers which are highly visible and easy to deploy.

**Result:** This warehouse space is now equipped with safe walkways for pedestrians to travel, safely segregated from moving vehicles. Pause gates slow people at vehicle pedestrian intersections and blind corners. Expandable barriers are now available in areas where temporarily restricting spaces is required. All staff can now operate in a much safer space resulting in peace of mind for all stakeholders.

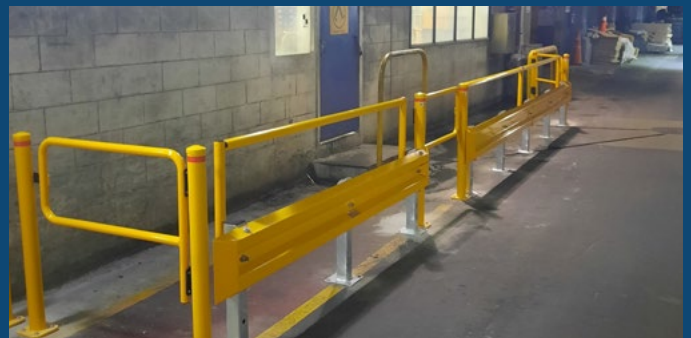
[Read more on our Projects Page](#) →

## Before



*Exposed entrance to worksite.*

## After



*Walksafe Traffic Barrier and Pause Gates create safe entry.*



*Open spaces for pedestrians.*



*Expandable barriers used to restrict areas.*



*Walkway with old guidance paint.*



*Our Walksafe Traffic Barrier creates a clear and safe passageway for workers.*



# Mindfulness - Word Find and Sudoku

B	A	L	C	L	U	T	H	A	W	B
U	W	H	A	N	G	A	N	U	I	W
L	A	A	Y	W	A	I	R	A	U	A
L	I	I	P	A	T	E	A	F	W	I
E	K	H	O	G	U	R	T	G	A	H
R	A	N	G	I	T	I	K	E	I	O
Y	T	E	M	A	N	A	W	A	T	U
G	O	R	E	T	I	M	E	I	A	T
M	A	T	A	U	R	A	T	S	K	O
R	A	N	G	I	T	A	I	K	I	P
O	N	C	L	A	R	E	N	C	E	R

Can you find  
15 rivers in  
New Zealand?

Waikato

Clutha

Whanganui

Taieri

Rangitikei

Mataura

Clarence

Waitaki

Oreti

Rangitaiki

Manawatu

Buller

Waihou

Patea

Wairau

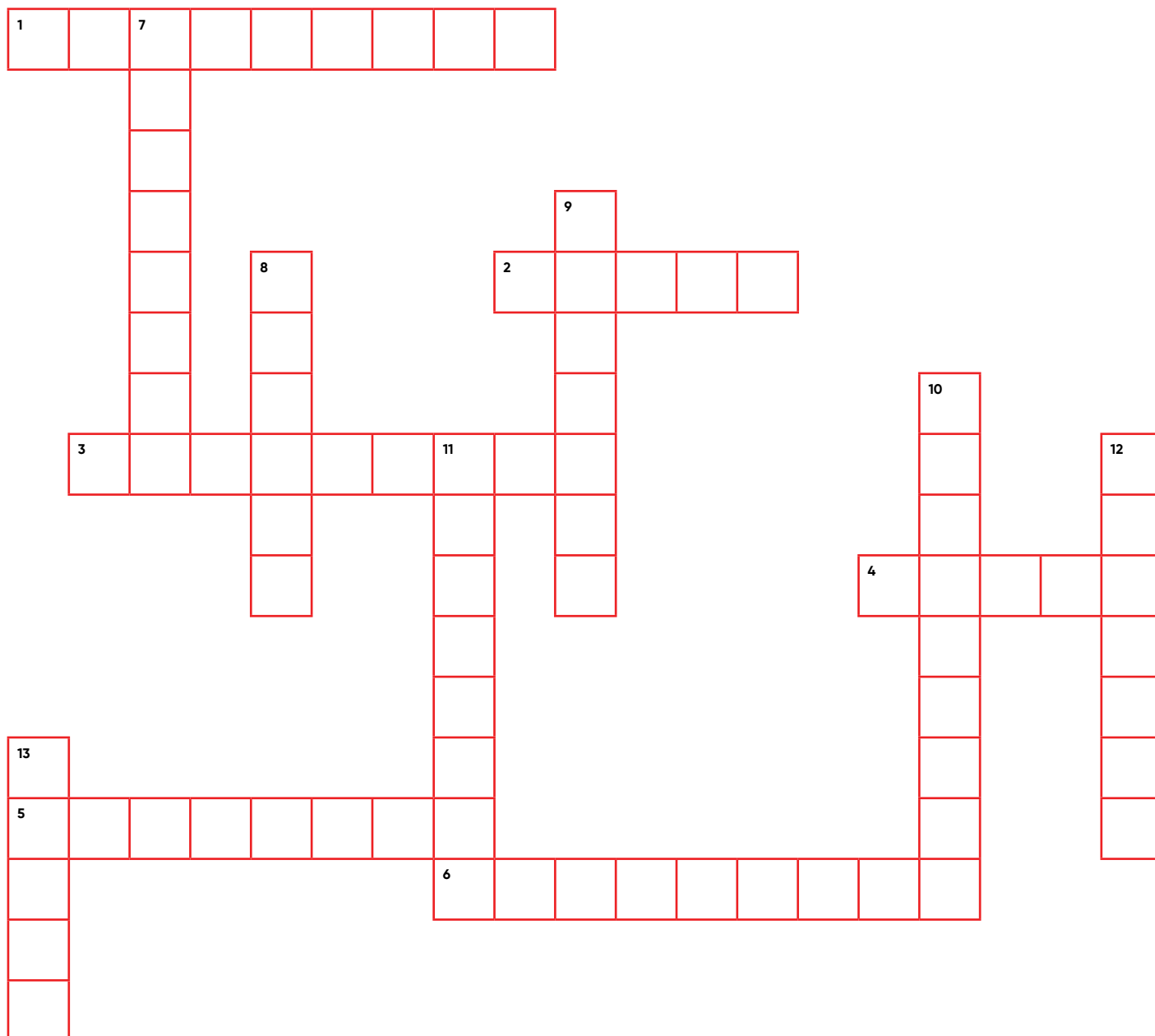
## Sudoku

Medium	7		8					
		6	5	8		4		
				6				
			7					
	4		6			9		1
	1	2		3			8	6
					3	1	9	
							1	
	3	9	1				6	5
								4

Hard		7				2			5
	9					4		8	
			3	2				5	
				6	3				
	2					9		1	
			9		4	6			7
	3								6
	8					5			4



# Mindfulness – Crossword



## Across

1. SlowStop bollards are an innovative energy \_\_\_\_\_ bollard designed in Texas, USA
2. Speed \_\_\_\_\_ will slow vehicles and come in 50mm and 75mm options.
3. New Zealand's largest national park.
4. The largest eagle to ever exist, originating in NZ.
5. City of sails.
6. Vanguard provide custom safety \_\_\_\_\_.

## Down

7. A popular New Zealand brand that makes high quality gear, famous for their iconic bush shirts.
8. LED Sequential \_\_\_\_\_ provide up to 900 metres of visibility.
9. Where the steepest street in the world is located.
10. Wellington museum Te Papa Tongarewa translates to Container of \_\_\_\_\_.
11. Creators of the wool runner shoe.
12. Vanguard. "Standing \_\_\_\_\_ you and harm."
13. New Zealand's biggest export market.



# Civil & Roading Industry Update



**Oliver**

Sales Consultant  
Sector Lead – Civil & Roading  
oliver@vanguardgroup.co.nz

Over the past few months in my conversations with civil and roading contractors, I have noticed more and more people taking a proactive approach to safety and traffic management on their worksites, adopting a mindset of 'is there a better way' rather than 'we've always done it that way' – this has been very encouraging to see.

It's rewarding being able to provide practical, fit-for-purpose product solutions that help contractors to safely and efficiently manage their work sites. I will be attending the CCNZ Conference on the 31st of July, I'm really looking forward to working with the people I meet there, helping them with safety and traffic management on their work sites.

Have a read below of how our new composite fibreglass Safe Covers have improved efficiency for a number of workers in the industry already.

## Footpath Project

**Challenge:** A large national contractor was undertaking trenching work across residential driveways and needed a way to enable vehicles to access the properties and pedestrians to use the footpath safely. Previously they had used steel plates which required a lot of work – a Hiab to unload the plates and a digger to manoeuvre the plates into position. The contractor then had to lay asphalt around the edges to provide a smooth transition onto the plate. They were looking for a better way.

**Solution:** Vanguard supplied our Oxford 15/10 Low Pro Safe covers which are tested and rated to handle a 3.5T vehicle over a trench span of up to 900mm.

Slip resistant and hi-vis, each Safe Cover can be lifted by two people, so the trench could be safely covered, and opened to vehicle and foot traffic within minutes. In addition, the rubber edges which prevent creep, also eliminated the need to pour asphalt around the covers.

**Result:** By using fibreglass Low Pro safe covers from Vanguard instead of steel plates, the contractor was able to save time on the job and eliminate overhead costs such as the Hiab truck, as well as provide safe, secure access for vehicles and pedestrians – a win-win outcome for all parties involved.

[Read more on our Projects Page](#) →



*Oxford Safe Covers have been tested to hold a distributed load of 3.5T.*



*The Low Pro Safe Cover is easy to handle, requiring no heavy lifting gear. Rubber edges prevent creep and are also anti-trip.*



# Construction Industry Update



**Braden**

Sales Consultant  
Sector Lead - Construction  
braden@vanguardgroup.co.nz

It has been a busy few months in the construction industry working with a lot of new builds for facilities.

There has been great demand for quality walkways and barriers which we have seen going out the door in large numbers - a great sign that people are taking safety seriously and

properly equipping their sites according to best practice.

We have had a lot of interest in energy absorbing technology like our SlowStop bollards. First stocks of these have finally arrived into our warehouse! Have a read of the product focus on page 10 to learn more.

## Apartment Block Car Park Project

**Challenge:** Our client, a well-known construction company approached us for supply of safety bollards and wheel stops in a recently completed high-rise apartment block to protect their assets and building. They needed these immediately so timing for delivery was critical.

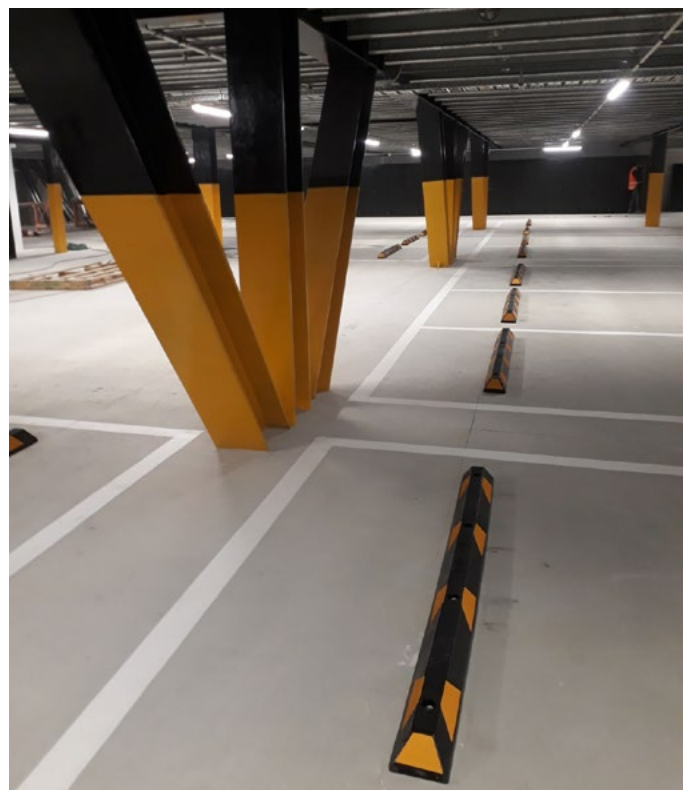
**Solution:** Following our consultation, Vanguard identified all areas that needed protecting and were able to supply the right products straight from our warehouse. This meant the apartment car park would be completed within the client's tight timeframe ready for opening day and to our quality standard.

**Result:** The car park is now fully operational. Our client's assets and building are protected by quality products and they were pleased by the quick turnaround to meet their deadline.

[Read more on our Projects Page](#) →



*Our Surface Mount Bollards protecting valuable assets.*



*Wheel Stops act as a guide and safety stop for drivers to prevent damage to structures.*

# Product Focus: SlowStop Energy Absorbing Bollards

SlowStop is a revolutionary, energy-absorbing bollard, made in Texas, USA that provides a high-quality and durable solution for protecting assets and infrastructure.

SlowStop is designed to absorb the impact of a collision by using an elastomer that is hidden in the base of the unit. This reduces damage to your floor, vehicle and the bollard itself, saving ongoing maintenance costs and minimising operational delays. While a crash with a traditional rigid bollard will typically result in a damage to the concrete slab, SlowStop bollards absorb the impact leaving the bollard and surface intact. In this blog, we explore how SlowStop works and how it compares with traditional bollards.

The innovative SlowStop design overcomes the challenges faced with traditional rigid bollards, as it still has the strength of steel but with a rebounding

base system that absorbs any impact. They are made from tough galvanised steel and the bases are made from cast iron, which are bolted to the concrete using anchor screws.

According to Kenneth Parrott, a Senior Project Engineer of Impact Recovery Systems USA, the elastomer allows the bollard post to tilt up to 20°, drawing out the slowing time of the vehicle and significantly reducing damage to the vehicle, it's driver and the ground surface.

SlowStop bollards are a revolutionary new product designed to alleviate the need for expensive repairs after collisions. They provide a great safety solution in busy warehouses and freight depots, as they greatly dampen impact and reduce damage. They protect pedestrians and vehicle occupants as well as guarding storage racks, structural columns and capital equipment from collisions with forklifts and other machinery.

[Read full story HERE](#) →



*SlowStop comes in three sizes for different applications.*



*Suitable for building and asset protection.*



*The energy absorbing elastomer base flexes upon impact.*

## Foodtech Expo 2021

The Foodtech/Packtech 2021 expo was a great success! We showcased our d-flexx range which is designed and manufactured in Denmark. The d-flexx range is an alternative to steel barriers that flexes upon impact and then returns to its original form. The special polymer material used in the d-flexx range is corrosion, chemical, and UV resistant making it perfect for manufacturing where cross contamination can occur.



*Thanks to everyone who came out and saw our stand. We met some great people showing initiative in creating safe workplaces.*



# Global News – Projects due for completion this year



## Mountain Road Rebuild in Phoenix Arizona.

A 91 tonne crane was needed to renew the transmission tower atop this iconic Arizona hill so a large civil construction company were called in to fix the connecting road.

The single-lane road with blind curves, steep drop-offs and falling boulders presented big challenges for the team but good coordination had the project completed safely.

Hopefully the crew weren't lugging heavy steel plates up that road! Safety first!



## Tesla Gigafactory Berlin-Brandenburg.

The Tesla Gigafactory Berlin-Brandenburg will be the most advanced high-volume electric vehicle production plant in the world. Starting with Model Y production at launch, they will establish original vehicle design and engineering for worldwide markets out of Germany. The Tesla Gigafactory's product technologies and production methods will be cutting edge: The most powerful battery systems as well as high performance drive units and power electronics.

The build site is 3 square kilometres. Imagine how many metres of traffic barrier would wrap around this facility!



## New Team Member – Louis

Welcome to Vanguard Louis! Our newest Vanguardian joins the team as our Business Development Manager and Sales Consultant in the Civil & Roading industry.

With a history in the civil and construction industry, Louis is already settling in well to his new role and making a great impact on the future of the company!

## Happy Vanguard anniversary to these wonderful four!

Thank you for all your great work and being a part of the Vanguard family!



Connor  
Warehouse  
Leader



Ange  
Financial  
Controller



Gareth  
Director, GM



Craig  
Director,  
Marketing

## Want to become a Vanguardian?

We are currently on the lookout for three roles:

- Talented Installers
- Internal Sales Consultant
- Warehouse staff

If you are interested in learning more about these roles, send a cover letter and your CV to:

[hello@vanguardgroup.co.nz](mailto:hello@vanguardgroup.co.nz)  
with the job title in the subject line.

# Get a free Swannдри!

Mention "The Vanguardian"  
for all orders over \$2,500 and  
receive a free Swannдри  
– RRP \$249

Available in mens and womens.  
Promo available until end of August 2021.  
1 per order over \$2,500+GST.



## Check out our blog!

[Click here to view online](#) →

**Book in a free 15 minute consultation  
with one of our safety experts!**

# 0800 500 147

0800 500 147  
vanguardgroup.co.nz  
hello@vanguardgroup.co.nz  
37 Percy Cameron Street, Avalon, Lower Hutt, 5011  
PO Box 38055, Wellington Mail Centre 5045

 **VANGUARD™**  
Standing between you and harm