

GETTING STARTED WITH YULIO

Step 1

Prepare content that is VR ready

Create your model in CET or SketchUp, or work with your design team.



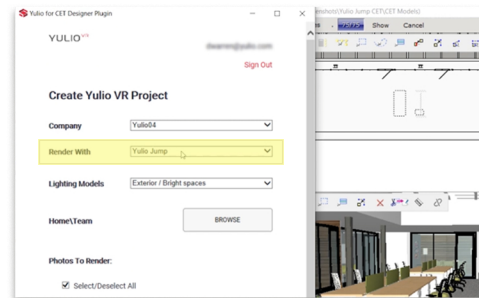
With the Yulio plugin, set the lighting model, follow on-screen steps and render.



VR-Ready Content

Yulio Jump

With Yulio Jump you can create unlimited photo-realistic 360-images or 2D renders. With **CET** or **SketchUp**, select **Yulio Jump** from the render drop-down.



Download the Yulio Plugin for:



CET Designer



RhinoCeros

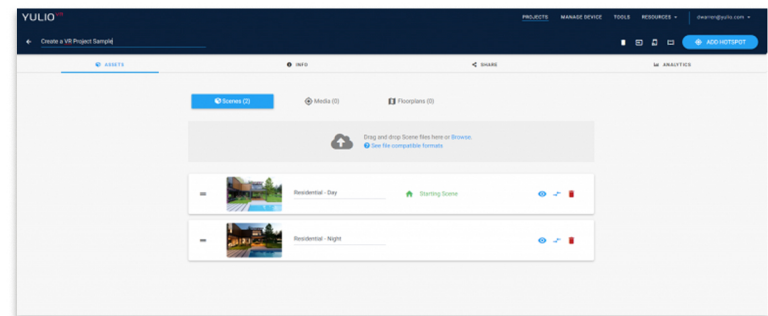


Step 2

+ Create a New Project



Upload to Yulio



Step 3

Add Interactive Hotspots and a Navigational Floorplan



Enhance with Yulio Tools

Navigational Hotspots

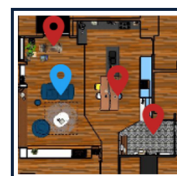
Our most popular type of enhancement for engaging projects. These hotspots transfer views from one scene to the next. Be sure to place them where the view will be transitioning to.



Step 4



View the project in browser mode or VR, share and launch a Collaborate session.



Project Floorplan

Create a navigation overlay in your project. Hotspot all of your project's scenes to a floorplan, a dollhouse view image, or an exterior rendering/photo to orient your