

OSSIX™ Bone

TIPS FOR FIRST TIME USERS: SINUS ELEVATION

Ossifying Collagen Sponge

.....

Thank you for choosing OSSIX™ Bone,
a highly sugar cross-linked, collagen spongy matrix.

Please refer to the OSSIX™ Bone IFU for full product information, indications and contraindications. [LINK](#)

OSSIX™ Bone is a sugar cross-linked, mineralized collagen spongioid matrix.

OSSIX™ Bone is recommended for use in the following cases (for new users - in this order):

1	Socket preservation – can be used without a membrane
2	Sinus elevation (crestal approach) – can be used without a membrane
3	Lateral/vertical augmentation (in cases with sufficient supporting bone)
4	Lateral Sinus Elevation

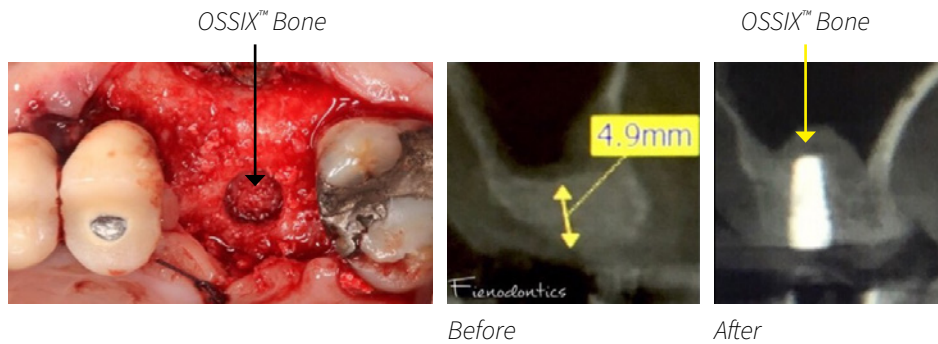
* Indications 3-4 require the use of membrane for stabilization.

It is recommended to start with simple cases and get familiar with the material's behaviour and handling features.

How to Use OSSIX™ Bone in Crestal Sinus Elevation

1	Determine residual ridge height by CBCT.
2	Design the incision and lifting of a full thickness flap.
3	Drill until reaching the sinus floor.
4	Using osteotome break the sinus floor.
5	Choose the appropriate OSSIX™ Bone size/quantity, depending on the size of the defect.
6	Trim by holding OSSIX™ Bone with sterile forceps and trimming with sterile scissors or scalpel.
7	Hold at the osteotomy orifice until fully soaked with blood.
8	Condense the material through the osteotomy to the sinus cavity.
9	Install the implant.

Crestal Sinus Elevation



Even in cases of perforation of the Schneiderian membrane, OSSIX™ Bone will not spread in the sinus area

Minimally Invasive Lateral Sinus Lift with OSSIX™ Bone

- 1 Once the osteotomy has been performed in the lateral window, proceed to separate and elevate the Schneiderian membrane including the medial area that will separate it from the nasal wall. This will release the membrane and allow for better placement of OSSIX™ Bone.
- 2 Position OSSIX™ Bone prior to implant placement in cases where clinical conditions allow. Use dental/soft tissue forceps to gently place OSSIX™ Bone in the sinus cavity and soak it with the patient's blood.
- 3 In case of perforations of up to 3mm, the characteristics of OSSIX™ Bone which transform the biomaterial to a compact sponge when hydrated, constitute the treatment per se. **Due to the physical structure of OSSIX™ Bone, there is no migration of particles in the sinus cavity.**
- 4 Cover the lateral window with an OSSIX® Plus membrane.

OSSIX™ Bone Sizes



5x5x5



5x5x10



5x10x10

WHY OSSIX®?

OSSIX® safe and effective regenerative solutions are set to change the way you work and the way your patients feel. Our safe and proven OSSIX® solutions for GBR and GTR significantly reduce the need for repeated procedures, simplify complex procedures, and are cost-effective. Your patients will benefit from enhanced healing, being able to quickly return to their routine – both contributing to a higher compliance rate.

Leading dental surgeons frequently use OSSIX® Regenerative Solutions and vouch for their simplicity and efficacy. Trusted over more than 20 years, OSSIX® is the go-to solution for a wide variety of procedures.

MORE TIPS FOR YOU

