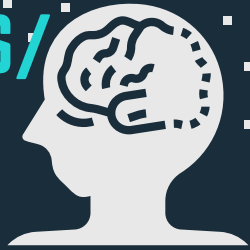




# ALZHEIMER'S/ DEMENTIA PROGRAM



According to the National Institute on Aging:

- 1 in 9 seniors over the age of 65 are diagnosed with Alzheimer's disease
- Alzheimer's is a progressive disease, where dementia symptoms gradually worsen
- Symptoms of the disease include impaired thought, speech, and confusion.
- There is no cure for Alzheimer's, only management of the symptoms.

**727.447.5845**

**www.EasyLivingFL.com**

HHA#299992282 | HHA# 299994823

## HOW EASYLIVING'S ALZHEIMER'S/DEMENTIA PROGRAM WORKS:

- 1.) We will provide an in-home assessment by a professional care manager that reviews your level of risk and will make the necessary recommendations to keep you aging wisely.
- 2.) We will provide a trained care partner to provide the essential care needed to reduce your risk of falls and prevent unnecessary hospitalizations, such as:
  - **Vitals** - track and report any changes in blood pressure & weight
  - **ADLs** - Assisting with transfer - in/out of chair, to the restroom, in/out of bed
  - **Meal Preparation** - Assistance in preparing healthy meals & encouraging fluids to maintain a safe level of hydration
  - **Medication Assistance** - Remind and assist to ensure medication is taken within prescribed time and within physician orders
  - **Housekeeping** - Maintain a clean and safe home environment



## A CARE MANAGER WILL OVERSEE AND MANAGE CARE:

- **Clinical management** of chronic diseases (e.g., Dementia, Diabetes, CHF, COPD, Stroke)
- **Monitor signs & symptoms** of chronic illness exacerbation (e.g., signs of heart failure, vascular impairment)
- **Coach** the importance of healthy behaviors, like dietary and medication compliance, and the importance of monitoring indicators of disease progression like weight, glucose levels, or swelling in the extremities
- **Medication management** and working with doctors/pharmacists on medication reconciliation and coordination to ensure the patient is taking medications properly and reducing errors and side effects.
- **Provide recommendations** and resources to assist with increasing quality of life and reducing family stress
- **Managing** escalating behaviors in dementia patients

## PROVEN OUTCOMES

EasyLiving's hospitalization & rehospitalization rate for the previous 30 days is **1.41%** which is well below the national average of 15.6% & our local average of 15.9%.

