



## **SPEC-RITE ONLINE**

**DELIVERING THE DATA YOU NEED WHEN YOU NEED IT**

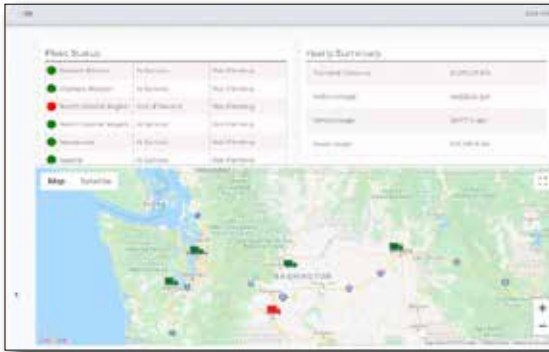
Spec-Rite Online is the software engine that provides real time information and data to help you manage pavement markings. The system combines software and smart equipment to reduce waste and ensure quality and compliance. Spec-Rite Online is available in two subscription levels; Essentials Suite and Precision Suite.

# ESSENTIALS SUITE

## SPEC-RITE ONLINE

## Features

The **Spec-Rite Online Essentials Suite** provides a cost-effective introduction to data management, enabling asset tracking and automated reporting, saving you time, money and effort with your reporting requirements.



```

Job Activity Report
7/23/2019 10:21 AM - 7/23/2019 3:20 AM
HIGHWAY  US-12
MILEPOST  119.99 - 128.99

Start Switch On Dist 197853.2 ft

Left Gun 1 (Yellow 4") SOLID FT SKIP FT
Left Gun 2 (Yellow 4") 27860.6 0.0
Left Gun 3 (Yellow 4") 41076.8 17507.2
Left Gun 3 (Yellow 4") 0.0 0.0
Yellow Subtotals 78937.4 17507.2
Yellow Usage 278.4 gal
Yellow Thickness* 13.9 mils
Yellow Cal Number 0.225

Left Gun 4 (White 4") 0.0 2068.5
Right Gun 1 (White 4") 0.0 0.0
Right Gun 2 (White 4") 0.0 0.0
Right Gun 3 (White 4") 0.0 0.0
Right Gun 4 (White 4") 191317.8 1326.5

White Subtotals 191317.8 3333.1
White Usage 551.3 gal
White Thickness* 13.7 mils
White Cal Number 0.225

FOOTAGE TOTALS 270255.2 20840.3
FOOTAGE CAL NUMBER 0.986

* Thickness calculation based on line widths shown.
All report items based on calibration numbers.
Verify calibration frequently to ensure correct reports.

COMMENT LOG
7/23/2019 12:25 PM - kia van white paint
    
```



### Go Green! Eliminates the need for paper reports

- Automatically report job-related data directly from the field to the office.
- Save time and focus on other priorities.



### Live fleet GPS tracking

- Gain a holistic view of what your fleet is doing and where it is located.
- Get equipment location, speed, and distance in real-time.



### Remotely monitor real-time application

- Keep track of quantities and material usage.
- Maintain accurate data of machine operating time.



### Hands-free logging

- Continue collecting data while equipment is in operation.
- Generate daily progress reports and establish future benchmarks.



### Plug and play on your existing SKIP-LINE equipment

- Designed to work with existing Skip-Line equipment.
- Get equipment instantly on the cloud.



### Automatic reporting to the office

- Send equipment data to the cloud
- Simplify the transfer of critical job-related data directly to the cloud.
- Preserve the integrity of data prone to mistakes when handwriting on paper or by human error.



### Access management dashboard

- Gain a holistic view of equipment condition and status.
- Increase transparency and accountability from your team.

## ESSENTIALS SUITE HARDWARE REQUIREMENTS

### PIGEON™



- Pigeon™ features internal 4G LTE and GPS capabilities.
- The case features a magnetic attachment making it universally adaptable to the metal surfaces of your equipment.

### HDVO-318 HD Video Overlay



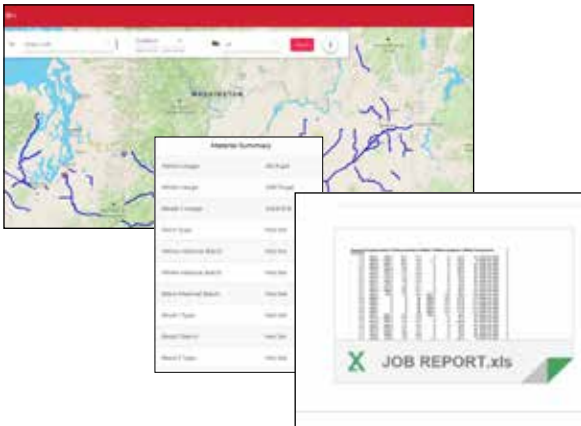
- Striping truck drivers can customize guidance cross-hairs, view multiple camera feeds, and display key operating information
- The HDVO has built-in Pigeon functionality.

# PRECISION SUITE

SPEC-RITE ONLINE

## Features

The **Spec-Rite Precision Suite** provides a comprehensive platform for complete markings management, taking your company or organization to the next level with increased performance and decreased waste.



All features in Essentials Suite, plus:



### Material Usage

- Get real-time material application rates to ensure compliance with specifications.
- Reduce material waste and costly overapplication.
- Increase retroreflectivity readings by applying the right amount of paint for bead embedment.



### Bead usage (Via Scales)

- Track bead usage and both average and real-time application rates.
- Increase retroreflectivity readings with proper bead coverage.



### System Metrics

- Monitor and record system temperatures and pressures.
- Track material temperatures to ensure they are applied to manufacturers' specifications.



### Environmental Conditions

- Track ambient conditions and road surface temperatures to ensure they are applied to manufacturer specifications.
- See how materials perform when applied in different conditions.



### Job Name (User Entries)

- Log the job name, route, or project identifier for quick reporting.
- Use job naming to plan and coordinate the team.



### Inspector Print-Out

- Print out an Activity Report to get material usage, application rates, distances, and job information for a quick inspector summary.



### Live Access

- Access the Glass Cockpit metrics live to see what the team sees in real-time.



### Full Spec QA Report

- Create custom QA reports with a Skip-Line Representative to get the information most important to your organization's success.
- Utilize templates and automated reporting to send the right reports to the right people - whether it is an inspector, supervisor, GIS engineer, tort claim specialist, or cost accounting personnel.

## PRECISION SUITE HARDWARE REQUIREMENT

### DL-18 Data Logging System



- The DL-18 Data Logging System was designed to be unobtrusive by working in harmony with the striping operation.
- The Integrated Data Logging runs on the Glass Cockpit interface.

# Connect your equipment to the cloud

Spec-Rite Online seamlessly integrates your smart equipment on a single dashboard, combining Skip-Line and third-party equipment data to visualize your striping operation.

## Compare top features and subscription benefits

SPEC-RITE ONLINE FEATURES & BENEFITS		ESSENTIALS SUITE		PRECISION SUITE
	Hardware Requirements	Pigeon	HDVO-318	DL-18
Data Logging	Location, speed, distance via magwrap & GPS	✓	✓	✓
	Material Usage	✓	✓	✓
	Bead usage (via scales)			✓
	System metrics			✓
	Environmental Conditions			✓
	Job names (user entries)		✓	✓
	Inspector Print-Out		✓	✓
Web / Reporting	Spec-Rite Access	✓	✓	✓
	Counter channel reports	✓	✓	✓
	Fleet location and activity tracking	✓	✓	✓
	Waze Integration	✓	✓	✓
	Remote Real-Time Monitoring	✓	✓	✓
	Live Access			✓
	Full Spec QA Reports			✓
Subscription Benefits	Unlimited user access to SRO platform	✓	✓	✓
	Extended warranty on hardware for the length of the subscription	✓	✓	✓
	No cost inspection and testing	✓	✓	✓
	Trade-in credit program valued up to a maximum of 20% toward new system upgrades	✓	✓	✓
	Access to video series and training program	✓	✓	✓
	Customized software on-boarding and user training	✓	✓	✓

Subscription includes free maintenance/normal wear repairs & return ground shipping on active products while the subscription is active. The customer is responsible for the difference of expedited shipping. Warranty does not cover damage from water, welding, wiring, or blunt trauma.

Contact us today for a FREE 30-day trial of Spec-Rite Online. Email [sales@skipline.com](mailto:sales@skipline.com).



SKIP-LINE® by SPEC-RITE® is the industry leader in pavement marking controls. SPEC-RITE® is a software development and data management firm focused on providing intuitive tools for assessing the quality of airfield and highway markings-helping decision-makers foster safer travel. Together SKIP-LINE® and SPEC-RITE® deliver the data you need when you need it.

SKIP-LINE, LLC  
10514 N. McAlister Road  
La Grande, OR 97850

MAIL: [sales@skipline.com](mailto:sales@skipline.com)  
WEB: [www.skipline.com](http://www.skipline.com)

PHONE: 541.963.0111

