

Pre-Rinse Fitting Installation Instructions

Overview

Chicago Faucets feature cast brass bodies and precision cartridges for years of reliable operation. Our pre-rinse valves use as little water as necessary while still achieving maximum cleaning power.

Notice to the Installer

- Read this entire instruction sheet before installing to ensure proper installation.
- Installation must comply with local codes and ordinances.
- Use of abrasive cleaners, chemicals, or solvents can damage the surface.
- Use mild soap with warm water to clean and protect the finish of your Chicago Faucets fitting.

Pressurized plumbing fixtures shall be installed in accordance with manufacturer's recommendations. The supply piping to these devices shall be securely anchored to the building structure to prevent installed device from unnecessary movement when operated by the user. Care shall be exercised when installing the device to prevent marring the exposed surface.

NOTE: The information in this manual is subject to change without notice. Please leave this manual with the facility manager after completing the faucet installation. This document contains information necessary for routine maintenance and servicing.

Pre-Installation Setup:

The following tools and plumbing supplies are needed to complete the faucet installation:

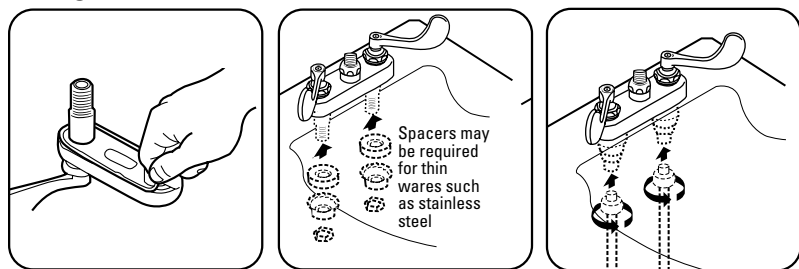
- 12" adjustable wrench
- Strap wrench
- Teflon tape or other thread sealant
- Permabond HH040 thread locker
- 7/16" hex key

NOTE: Before installation, turn off water supplies to existing faucet and remove faucet if replacing. Clean faucet basin and clear away debris. Flush all supply lines before connecting to faucet. Failure to do so can result in debris clogging the inlets and/or cartridges.



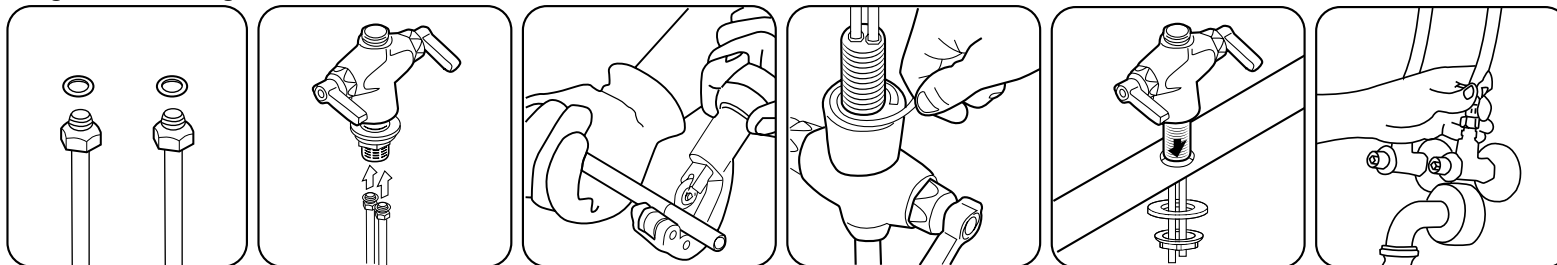
Install the Faucet Base - Deck Mount

Fittings for 4" Centerset Sinks



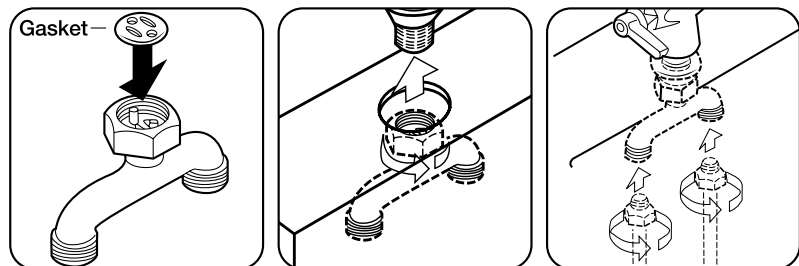
1. Apply putty or gasket to underside of faucet body to assure a good seal and level fit.
2. Place shanks through holes in sink and assemble mounting hardware. Use spacers if necessary.
3. Attach supply lines with coupling nuts and tighten securely. Attach spout if provided separately.

Single Hole Fittings



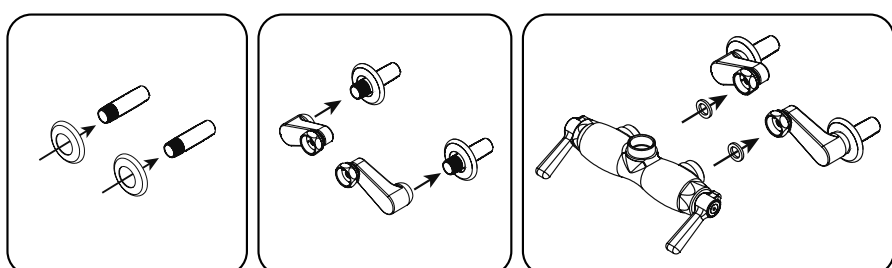
1. Ensure O-Rings are installed on hoses or tubes.
2. Install hoses or tubes.
- Copper Tube Installation**
2b. Cut tubes to desired length.
3. Apply putty to underside of faucet body to assure a good seal and level fit.
4. Place shank through hole in sink and assemble mounting hardware.
5. Connect water supply.

Optional Mixing Tee Installation - for use with single hole fittings



1. Install tee gasket over guide pins.
2. Secure coupling nut of tee to body shank. Tighten securely.
3. Attach supply lines with coupling nuts. Tighten securely.

Install the Faucet Base - Wall Mount



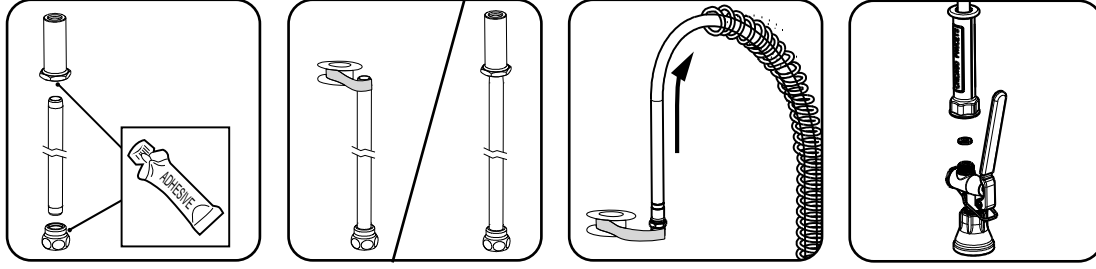
1. Assemble trim flanges over pipes.
2. Secure supply arms to piping. Position them as close as possible to desired location to mount faucet. Then, flush the supply lines after installing arms.
3. Adjust supply arms to desired centers, making sure gaskets are in place. Tighten arms to body with a 12" crescent wrench, make sure fitting is level.

NOTE: If faucet is supplied with integral stops, confirm that both stops are fully open. Stops can be accessed using a screwdriver at the bottom of the body.

Pre-Rinse Fitting Installation Instructions

(continued)

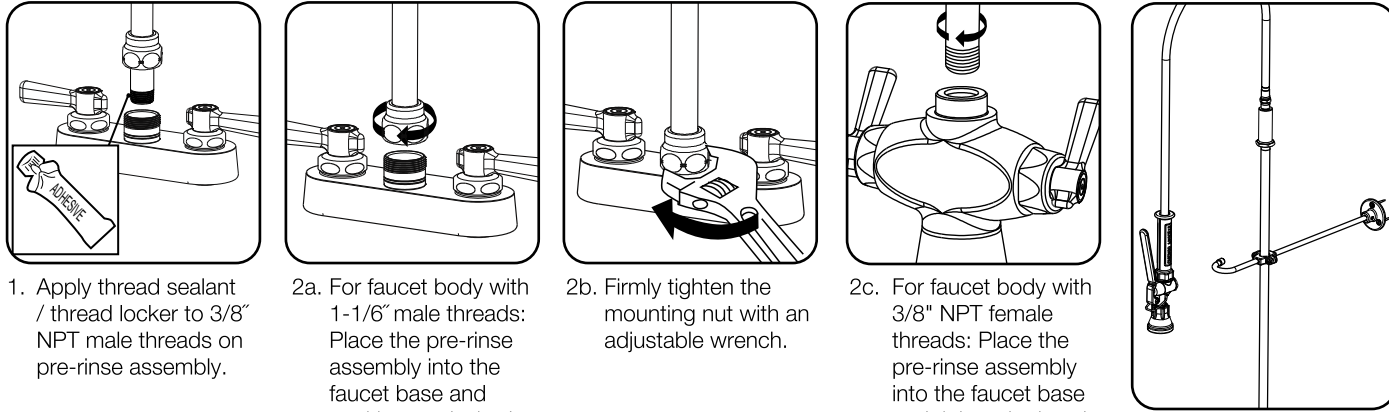
Assemble the Pre-Rinse Riser and Valve



- 1a. Remove adapter and guide shank then apply food grade adhesive to both threads in the adapter and securely assemble the body adapter to the body and riser.
- 1b. Apply Teflon tape on pipe threads at top of riser and secure guide shank. If a back-flow preventer is required (sold separately) it is installed on the top of the riser first, then the guide shank – with hex side down.
2. Slide spring over hose then wrap threads on hose with Teflon tape and assemble to guide shank and riser assembly, tightening securely.
3. Insert green fiber washer into hose handle and assemble spray insuring the spray hold-down ring is in place over the handle.

NOTE: Allow adhesive to dry as recommended by the adhesive manufacturer before allowing water to pass through the fittings.

Attach Pre-Rinse Assembly to Faucet Body



1. Apply thread sealant / thread locker to 3/8" NPT male threads on pre-rinse assembly.
- 2a. For faucet body with 1-1/6" male threads: Place the pre-rinse assembly into the faucet base and position as desired.
- 2b. Firmly tighten the mounting nut with an adjustable wrench.
- 2c. For faucet body with 3/8" NPT female threads: Place the pre-rinse assembly into the faucet base and tighten by hand or strap wrench until secure and the desired position is achieved.
3. Install pipe support with integral hose hook to riser and secure to wall with appropriate anchors.

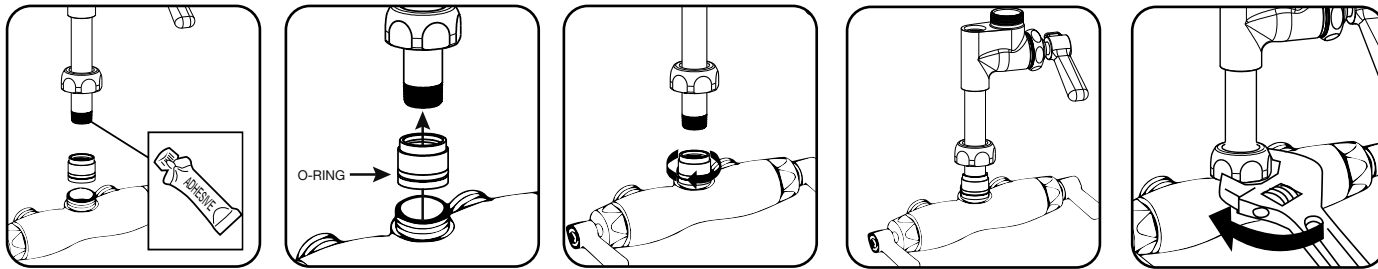
Installing Optional Adapta Faucet

If your pre-rinse fitting includes an optional Adapta Faucet, you must assemble it to the faucet base BEFORE installing the pre-rinse assembly.

Adapta Faucet Installation with 1-1/16" Male Threads

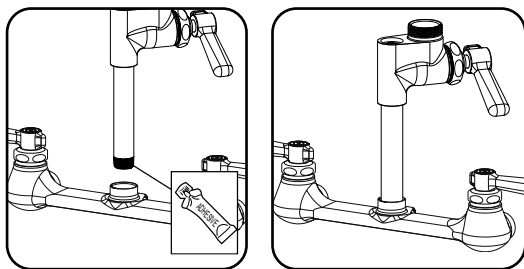
NOTE: If existing faucet base outlet has 3/8" NPT Female Threads, skip to installation with 3/8" NPT Female Threads.

Assemble mounting hardware (Pre-Pack) to Adapta Faucet.



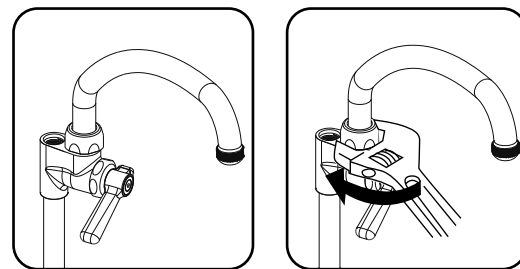
1. Apply thread sealant / thread locker to 3/8" NPT male threads on Adapta Faucet.
2. Make sure O-Ring is in place on the Base Adapter.
3. Secure base adapter to Adapta Faucet as shown. Use a 7/16" Hex key to firmly tighten Base Adapter.
4. Place the Adapta Faucet into the faucet base and position as desired.
5. Firmly tighten the mounting nut with an adjustable wrench.

Adapta Faucet Installation with 3/8" NPT Female Threads



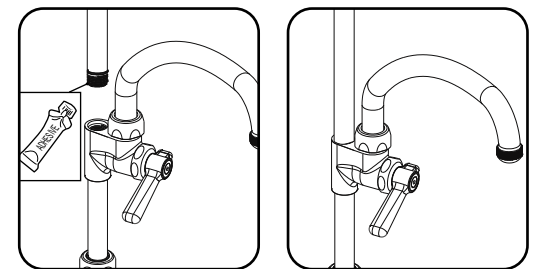
1. Apply thread sealant / thread locker to 3/8" NPT male threads on Adapta Faucet.
2. Place the Adapta Faucet into the Faucet Base and tighten by hand or strap wrench until secure and the desired position is achieved.

Adapta Faucet Spout Assembly



1. Place spout assembly into Adapta Faucet as shown.
2. Tighten spout nut firmly with adjustable wrench.

Install Pre-Rinse Riser to Adapter Faucet



1. Apply thread sealant / thread locker to 3/8" NPT male threads on Riser Pipe.
2. Position Riser as shown and tighten firmly with strap wrench.

NOTE: When faucet installation is complete, turn on all water supplies and check for leaks. Adjust connections as required.

Care and Maintenance

All Chicago Faucets fittings are designed and engineered to meet or exceed industry performance standards. Care should be taken when cleaning this product. Do not use abrasive cleaners, chemicals or solvents as they can result in surface damage. Use mild soap with warm water for cleaning and protecting the surface of Chicago Faucets fittings.

For additional technical assistance, call 800/TEC-TRUE (800-832-8783) or visit our website at chicagofaucets.com.

CHICAGO FAUCETS LIMITED WARRANTY

TO WHOM DOES THIS WARRANTY APPLY? — The Company extends the following limited warranty to the original user only.

WHAT DOES THIS WARRANTY COVER AND HOW LONG DOES IT LAST?

This warranty covers the following Commercial Products:

LIFETIME FAUCET WARRANTY — The "Faucet," defined as any metal cast, forged, stamped or formed portion of the Product, not including electronic or moving parts or other products separately covered by this Limited Warranty or water restricting components or other components, is warranted against material manufacturing defects for the life of the Product.

FIVE YEAR FAUCET WARRANTY — Certain Products and portions of the Product are warranted against material manufacturing defects for a period of five (5) years from the date of Product purchase. Products warranted against material manufacturing defects for a period of five (5) years from the date of Product purchase are referred to by the product numbers 42X, 43X, 15XX and E-Tronic® - 4X, 5X, 6X, 7X, 8X and 9X. All zinc die cast portions of Product are warranted against material manufacturing defects for a period of five (5) years from the date of Product purchase.

THREE YEAR ELECTRONICS WARRANTY — Electronic components, including the solenoid, are warranted for three (3) years from the date of installation.

FIVE YEAR CARTRIDGE WARRANTY — The "Cartridge", defined as the metal portion of any Product typically referred to by the product numbers containing 1-099, 1-100, 377X, 217X and 274X, excluding any rubber or plastic components, is warranted against material manufacturing defects for a period of five (5) years from the date of Product purchase. All Cartridges included in the Company's Single Control or Shower Products also are warranted against material manufacturing defects for a period of five (5) years from the date of Product purchase.

ONE YEAR FINISH WARRANTY – COMMERCIAL — For Products used in commercial applications, the finish of the Product is warranted against material manufacturing defects for a period of one (1) year from the date of Product purchase.

OTHER WARRANTIES — All other Products not covered above are warranted against material manufacturing defects for a period of one (1) year from the date of Product purchase.

Other restrictions and limitations apply. For complete warranty details, call Chicago Faucets Customer Service at 847-803-5000 or visit chicagofaucets.com.

The Chicago Faucet Company
2100 South Clearwater Drive
Des Plaines, IL 60018
Phone: 847/803-5000
Fax: 847/803-5454
Technical: 800/832-8783
www.chicagofaucets.com