

VECTIS™ SPRING ASSIST HINGE

 **Vectis™**
by  **WeberKnapp**

Weber Knapp Co.

441 Chandler Street
Jamestown, NY 14701
info@weberknapp.com
weberknapp.com
800.828.9254

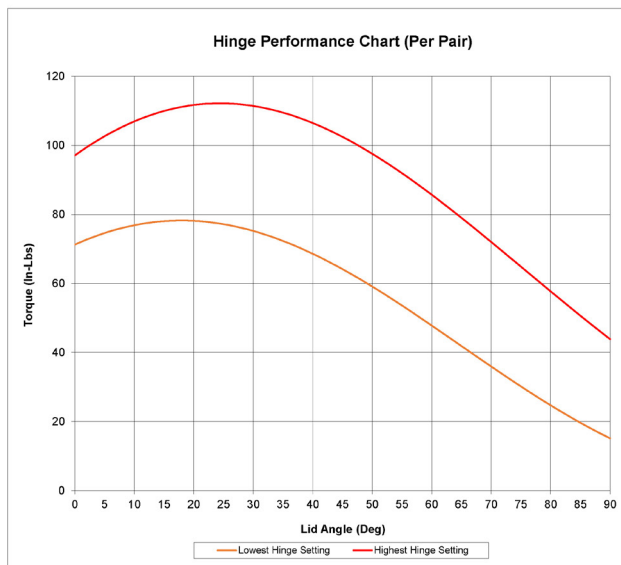
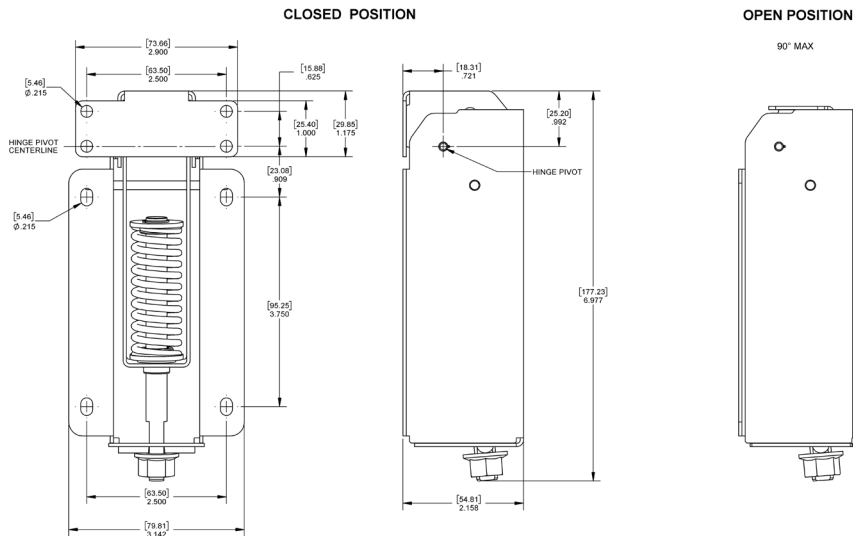
We are trusted experts in motion control engineering and manufacturing. As a single source provider consistently striving for excellence, we aim to be an extension of your engineering team.

 **WeberKnapp**

VECTIS™ SPRING ASSIST HINGE

FULLY MECHANICAL MECHANISM

- » No gas spring
- » Lift assist with Open/Closed bias



- » Materials: Steel, black powder coat, black oxide hardware
- » Cycle Performance: 15,000 cycles at max hinge setting
- » Installation Hardware Size: #10 (not supplied)
- » Range: 0° – 90° with open stop

Hinge can be adjusted between lower and upper limit. If your torque is below the torque of the hinge it will want to open on its own. If it is above the torque of the hinge it will want to close. Hinge is recommended for indoor use only.

Weber Knapp Co.

441 Chandler Street
Jamestown, NY 14701
info@weberknapp.com
weberknapp.com
800.828.9254

We are trusted experts in motion control engineering and manufacturing. As a single source provider consistently striving for excellence, we aim to be an extension of your engineering team.

