

Escape 17

E17A & E17B

4
PLANS
AVAILABLE



Escape
TRAILER *Built for you.*

ABOUT THE ESCAPE 17 TRAILERS

The Escape 17A and 17B trailers are an ultra-lightweight trailer option for the family looking for the perfect camping adventure. Most customers feel this trailer is the best crossover from tent trailer or tent camping. Escape 17 is the perfect trailer for young families and adventurers with smaller vehicles.

The E17A has no wet bath and allows for a permanent bed in the front and a four-person dinette in the rear. The E17B includes a wet bath and we offer three floorplan variations on this model. The 17B F1 includes a two-person dinette in the front and a larger four-person dinette in the rear. The 17B F2 plan includes a two-person dinette in the front and a permanent two-person bed in the rear. The 17B F3 includes a permanent one-person bed in the front and a four-person dinette in the rear. The 17B F1 and the 17B F3 have the option to add the “Gaucho Bunk” which transforms the smaller dinette into a sleeping area for two. The gaucho bunk has a 200 lbs max capacity.

The Escape 17 trailers are highly maneuverable on narrow roads and its shorter length makes tight turns a breeze to handle. With a dry weight of only 2290lbs (E17A) or 2640lbs (E17B), the Escape 17 has been designed specifically for mid-sized vehicles such as SUVs and mid-sized trucks a minimum towing capacity of only 3500lbs.

The frame is constructed with box steel and a rubber ride torsion axle suspension creating a solid foundation and smooth ride. The interior is professionally finished with your choice of Oak, Maple, or Contemporary cabinetry, large windows, high-grade vinyl flooring and a unique insulated vinyl headliner/wall covering.

Every Escape trailer includes a long list of standard features and an extensive options list available for even more personalization. Every trailer also comes with a limited two-year warranty. The body of the trailer is constructed from top and bottom of fiberglass shells which are bonded together with glass reinforced fiber to create a true one-piece unit.

The roof has a raised dome allowing water to run off rather than pooling. This greatly reduces any chance of water penetration while maintaining a strong, long-lasting lightweight trailer.

Our customers love the fact the Escape offer abundant interior storage space, especially in the large overhead cabinets. Light-colored hygienic wall coverings and large windows throughout each unit creates the feel of a more roomy, bright space.

Escape trailers utilize real wood for the cabinet doors along with plywood for tables, countertops, and the floor. The Escape 17A & 17B are the perfect blend of high-quality, design and function both inside and out.



SPECIFICATIONS	E17A	E17B
Exterior Length	17' 8" (add 6" for spare tire)	17' 8" (add 6" for spare tire)
Max. Exterior Height	8' 8" (Top of AC)	8' 8" (Top of AC)
Exterior Width	6' 8"	6' 8"
Interior Height	6' 2"	6' 2"
Interior Length	13' 8"	13' 8"
Freshwater Cap.	20 gallon	20 gallon
Blackwater Cap.	N/A	13.2 gallon
Greywater Cap.	26 gallon	26 gallon
Propane Gas Cap.	2 x 20 lbs	2 x 20 lbs
Hitch Weight	306 lbs	306 lbs
Axle Weight	2034 lbs	2344 lbs
Total Dry Weight	2290 lbs	2640 lbs
GVWR	3500 lbs	3500 lbs
Ball Height	18" loaded	18" loaded

E17 BASE FEATURES

CHASSIS

- 3500 lb Torsion Rubber Ride Suspension
- Safety Chains & Ride Suspension Break-Away Switch
- 2 Balanced 15” Radial Tires & Steel Rims (8 ply)*
- Full Size Spare Tire with Cover
- Electric Brakes
- EZ-Lube Axles
- Front & Rear Stabilizer Jacks

EXTERIOR

- Manual Awning*
- Thermal Double-Glazed Framed Windows with Screens*
- Front Window with Rock Shield (Non-thermal)
- Dual 20 lb. OPD Propane Tank with Auto Change Regulator & Cover
- Propane Quick Connect
- Sewer Hose & Storage Compartment
- Winterizing T-Valve
- LED Exterior Porch Lights*
- Exterior Bubble Levels
- Exterior Access Hatch*
- Exterior Grab Handle
- Single Entry Step*
- Mud Flaps
- 2” Bike Rack Receiver (150 lb Capacity)

INTERIOR

- 12,000 BTU Furnace
- Propane Hot Water Tank (E17A excluded)*
- 2 Roof Vents (Front vent is a Maxx Fan)
- 3 cu.ft. Fridge*
- 2 Burner Flush Mount Stainless Steel Cooktop with Glass Cover*
- Stainless Steel Sink, Faucet & Formica Sink Cover
- Power Range Hood Vent with Light
- 12V Demand Water System
- Custom Oak, Maple, or Contemporary Interior
- Formica Counter & Tabletops – 7 choices*
- High Grade Rolled Vinyl Flooring – 7 choices*
- Fabric for seats and cushions – 7 choices*
- Microwave Ready Cabinet*
- Wrap Around Overhead Compartments
- Under Seat Storage
- Opening Window Over Kitchen Sink
- Counter Extension Off Sink
- 2 LED Captain’s Reading Lamps in Bed Area*
- Screen Door
- Draw Down Window Shades with Valances
- 4” High Density Cushions

- 8” Plush Mattress (E17A , E17B F2 and F3 only)
- Power Bathroom Vent (E17A excluded)
- Fiberglass Enclosed Bathroom w/Shower (E17A excluded)
- Recessed Mirrored Medicine Cabinet (E17A excluded)
- Monitor Panel with Holding Tank Level

SAFETY/FIRE

- Oversized Emergency Exit Window (bug screen not included)
- Fire Extinguisher
- Propane Detector
- Carbon Monoxide/Smoke Detector

ELECTRICAL

- 55 Amp Converter/Battery Charger
- 12V Deep-Cycle Lead-Acid Battery*
- 25’-30 Amp Power Cord*
- 120V Interior Outlets*
- Battery Isolator Switch
- 120V Exterior Outlet
- 12V/USB Interior Outlet *
- LED Interior & Exterior Lighting

*ITEM AVAILABLE FOR OPTIONAL UPGRADE

E17 OPTIONS

OFF GRID POWER

- Dual 6V Lead-Acid Batteries
- Lithium Ion Batteries (100Ah)
- Inverter 1500W (Includes transfer switch and all outlets)
- 200W Solar Panel with Charge Controller
- Prewire for Solar with Roofmount MC4 Connector (not required if solar panel option selected)
- Solar Port wired to Charge Controller

COMFORT

- Removable Power Cord
- Electrical Management System with Surge Protector
- Air Conditioner with Digital Thermostat (Dometic 11,000 BTU)
- Digital Tank Level Monitoring System
- Propane Hot Water Tank with Exterior Shower (Driver Side) (E17A only)
- Two-way Hot Water Tank (Propane & 120V)
- Adjustable Swiveling Table Mount (only available with U-Shaped dinette option)
- Springfield Marine Pedestal
- Wireless Back-Up Camera (display monitor wired with 12V plug)
- LED Captain’s Reading Lights

KITCHEN

- ENO 3 Burner Cooktop
- Stainless Steel Backsplash in Kitchen (rear of countertop only, not side)
- Elkay Quartz Luxe Sink
- Microwave (built into cabinet)
- 4 cu.ft. Fridge

LAVATORY

- Composting Toilet with or without Black Tank, Piping, Black Tank Vent Stack and Water Line (E17A excluded)

EXTERIOR

- Body Lift Kit
- Exterior Shower (Driver Side) (Escape 17B only)
- Aluminum Rim Package (Includes 3 tires and rims)
- Power Awning (Dometic 9500E)
- LED Awning Light Strip
- Power Tongue Jack
- Spray Foam Insulation for Under Trailer with or without 2 x 12V Heat Pads
- Storage Box (Front of Trailer)
- Exterior 12V/USB Outlet
- Exterior Access Hatch
- Additional Exterior LED Light
- Master Switch Exterior LED Light Package
- Number Pad Door Lock (includes key)
- Additional Set Rear Upper LED Brake/Signal Lights

INTERIOR

- Additional 12V/USB & 120V Interior Outlets
- Additional Counter Extensions
- Retractable Wall Hooks (3 hooks per set)
- Modify Walls to be Reinforced
- Gaucho Bunk (17B F1 & F2 only)
- Shelves in Wardrobe Closet
- Convert Bench Seat to U-Shaped Dinette (17A, 17B F1 & F2 rear dinette only)

AUDIO/TV

- Stereo with Two Speakers (Bluetooth/FM/AM/CD/ DVD/USB)
- TV/Cable Ready with 120V Outlet (does not include TV)
- TV Antenna (includes TV/Cable Ready with 120V - does not include TV)

WINDOWS

- Frameless Windows (includes Frameless Split-Opening Rear Window)
- Frameless Split-Opening Rear Window
- Window in Kitchen (opening, framed or frameless)
- Window in Bathroom (opening, framed or frameless) (17B only)



Escape Trailer Industries reserves the right to modify or change plans, features, options, specifications and prices without notice. All capacities, weights, and dimensions are approximate. Photographs may contain some features that are optional.

PERSONALIZE YOUR ESCAPE

Our team at Escape Trailer is customer-centric, proud of our products, service, and most of all the experience you have while building your Escape. You can personalize your trailer by choosing between Oak, Maple, or Contemporary for your cabinetry, and seven standard choices of countertops, upholstery, and flooring to create your perfect style. There are 1000's of ways to personalize an Escape to make your trailer the perfect home away from home.

CABINETRY

Choose from Oak, Maple, or Contemporary options.

CABINET CHOICES



Oak



Maple



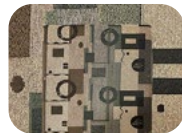
Contemporary

Please note: Both Maple and Contemporary cabinet options come with clear frosted acrylic inserts for the upper cabinet doors.

FABRIC

Choose from our selection of seven standard fabric choices or supply a custom fabric from your own source.

STANDARD FABRIC CHOICES



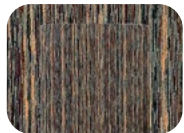
Kelso Champagne



Chinchilla



Valour Chocolate



Tenacity Harvest



Monroe Steel



Summit Ash



Symmetry Tidal

COUNTERTOPS

Choose from our seven standard countertops or choose from a range of Formica laminate options as well.

STANDARD COUNTERTOP CHOICES



Mineral Jet



Elemental Stone



Butterum Granite



Flax Gauze



Portico Marble



Silver Quartzite

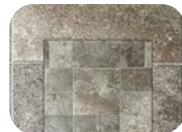


Silver Shalestone

FLOORING

Choose your high-grade vinyl flooring from our seven standard choices or make an optional choice.

STANDARD FLOORING CHOICES



New Castle Knights Armor



Havana Tobacco



Shadow Grey



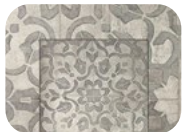
Hive Pollen



Tapestry Denim



Colorado Canyon



Filigree Pewter

All sample swatches shown are for illustration purpose only. Actual product may vary.

Escape 17A



Escape 17B F1



Escape 17B F2



Escape 17B F3



Enjoy Your *Escape*

Escape Trailer delivers the highest quality trailers and all come with an extensive range of standard equipment included in the base price.

We are the manufacturer and because we sell direct to you, our focus stays on you as does our commitment to delivering quality at a great price.

Our customer sales approach is low pressure, we are here for you.

We're always happy to hear from you and to provide any needed assistance. Please feel free to call us with any questions at **1.855.703.1650**.

If you're ready to take the next step, please explore our website. It offers a wealth of information on our trailers, current pricing, video tours, the purchasing process, delivery options, and much more.



Manufacturer
Direct Pricing



Superior Quality
and Longevity



Excellent Resale
Value



Industry Leading
Personalization

Toll Free: 1.855.703.1650 | www.escapetrailer.com



Escape Trailer Industries offers a limited two-year warranty. Our trailers are built to last your many adventures for years to come.

Escape TRAILER

43851 Industrial Way, Chilliwack, British Columbia, Canada V2R 4L2

Proudly Built in
British Columbia, Canada



@takeyourscape

All content & images • ©2022 Escape Trailer Industries