

The Safe & Secure Campus

PanGen[®]
STRUCTURED CABLING SOLUTIONS



Safety and security are of the utmost importance especially in our school systems. Security cameras are ever present on campuses from buildings, parking lots, and even walkways. Controlled access at entrances and video surveillance limit who can enter buildings and help prevent emergencies. Safety systems automatically alert local emergency services if an alarm sounds. It's all part of a global effort to help keep students, facility, and staff safe.

93% of public schools control access to campus buildings;

75% use security cameras to monitor buildings and grounds

--National Center for Education Statistics

When safety and security are critical, you need a network infrastructure that ties it all together and makes it easy to use and monitor. PanGen Structured Cabling Solutions deliver reliable performance for these critical systems, including a full offering for mounting and connecting security cameras in the ceiling; extended distance cabling solutions for areas out of reach for standard cable offerings; small diameter patch cords and high-density patching solutions help provide the space you need to connect backup systems and associated equipment in the telecommunications room.

For additional Panduit[®] or GenSPEED[®] components, visit www.pangensolutions.com

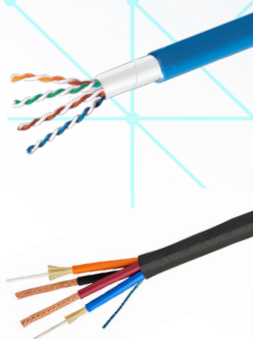
PANDUIT[®]

General Cable

A Brand of Prysmian Group

PNG-0015-0821

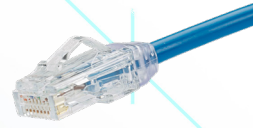
GenSPEED® Horizontal Cable



Part Number	Part Description
7151849	GenSPEED® 10 MTP™ Category 6A U/UTP copper cable with advanced Mosaic Variable Laser Cut, plenum, 4-pair, blue.
7131900	GenSPEED® Category 6 Enhanced U/UTP copper cable, plenum, 4-pair, Blue.
7136100	GenSPEED® Category 6 outside plant U/UTP copper cable with gel-filled construction to prevent moisture migration in underground or wet applications, 4-pair, black.
8131800	GenSPEED® 6 EfficienCMAX® Category 6 U/UTP copper cable, plenum, 4-pair, blue. For extended distance and high powered PoE applications.
7141586	GenSPEED® 10 Category 6A F/UTP (ScTP) shielded cable, plenum rated, 4 pair, blue.
6131785	GenSPEED® Category 6 F/UTP (ScTP) shielded cable, plenum rated, 4 pair, blue.
DAS021202BXP	GenSPEED® hybrid fiber-copper cable, indoor/outdoor, plenum rated, 2 x 12 AWG, 2 single mode fibers. Offering is available with 2 conductors, 12 and 16 AWG, and 2 single mode or multimode fibers.

Panduit Copper Patch Cords

- Patch cords are 28 AWG construction for increased flexibility, improved routing, and higher density applications
- Dual-rated CM/LSZH
- Shielded patch cord construction is F/UTP
- Multiple colors and lengths available



	Category 6A	Category 6
Unshielded, blue, 3 ft.	UTP28X3BU	UTP28SP3BU
Shielded, blue, 1 m.	STP28X1MBU	STP28X1MBU

Panduit RJ45 Jack and Plug Modules

- Field term plugs terminate 4-pair twisted pair cable
- Jack modules are 8-position, 8-wire
- Mini-Com® Category 6A RJ45 jack modules feature MaTriX Technology, support high bandwidth applications and are ideal for running Power over Ethernet
- Mini-Com® Jack Modules are UL Rated: UL 1863 and UL 2043
- NetKey® Jack Modules are punchdown, and are compatible with industry-standard keystone openings



	Category 6A UTP	Category 6A Shielded
Field Term RJ45 Plug	FP6X88MTG	FP56X88MTG



	Mini-Com Jack Modules	NetKey Jack Modules
Category 6A UTP	CJ6X88TGBU	NK6X88MBU
Category 6A Shielded	CJS6X88TGY	--
Category 6 UTP	CJ688TGBU	NK688MBU
Category 6 Shielded	CJS688TGY	--

Panduit Surface Mount Boxes

- Surface mount boxes accept two modules
- Mini-Com® Surface Mount Box is UL Rated: UL 1863 and UL 2043
- NetKey® Surface Mount Box is not UL rated for use in plenum spaces
- Various port counts and colors available



	Mini-Com Opening	NetKey Opening
2-port	CBX2IW-AV	NK2BXIW-A

Panduit Physical Security Products

- SmartKeeper blockout devices block access to open ports
- All SmartKeeper devices require master key (SMKEY) to unlock



RJ45	USB-A	USB-C	Master Key
SKRJ45RD-X	SKUSBA-V	SKUSBC	SKMKEY