

OCC FIBER SPLICE CASSETTE

FAST SPLICING IN A COMPACT SYSTEM

Introducing the all new Fiber Splice Cassette designed for quick and easy installation, saving you time and frustration. The Fiber Splice Cassette is a flexible, versatile, and scalable part of the OCC Enterprise Solution.



Removable Adapter Plate Option

FLEXIBLE

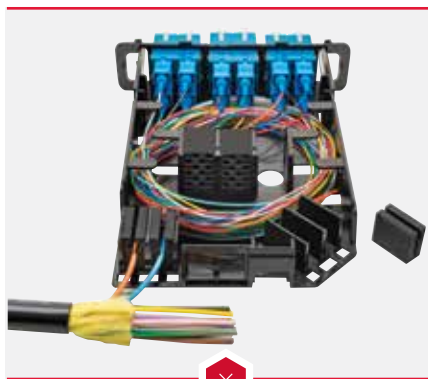
OCC's Fiber Splice Cassette is compatible with any common fusion splicer. It has been designed with a removable adapter plate enabling splicing comfortably outside the cassette, then easy fiber routing into the cassette for a faster, easier installation experience. The removable adapter plate can quickly be replaced for density upgrades and to incorporate new connector standards into your existing infrastructure. OCC's Fiber Splice Cassette includes two straight and two angled cable entry points, allowing the flexibility to choose point of entry to maintain proper bend radii in a variety of enclosures.



Angled and Straight Cable Entry

VERSATILE

OCC's Fiber Splice Cassette utilizes the same easy installation procedure for all applications including Telecommunication Closets, Local Area Networks, Central Area Networks, Central Offices, Remote Terminals, Hub Sites, Distributed Antenna Systems (DAS), and Data Centers. Our cassette's rubber cable retention blocks were designed to accommodate multiple cable diameters and eliminates the need for cable ties, blue felt, or spiral wrap for small cables or subunits. The cable retention blocks can be removed to accommodate larger diameter cables.



Rubber Cable Entry and Splice Sleeve Holders

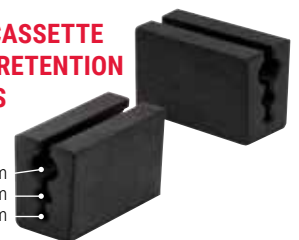
SCALABLE

OCC's Fiber Splice Cassette has removable rubber splice holders and cable retention blocks to separate and manage fibers with less chance of damage. Each removable rubber fiber splice holder can hold up to 12 splices, maintaining fiber organization during splicing and installation. By changing the adapter plate and adding another splice holder, a 12-fiber cassette can easily be converted to a 24-fiber cassette later on as your density requirements grow.



FIBER CASSETTE CABLE RETENTION BLOCKS

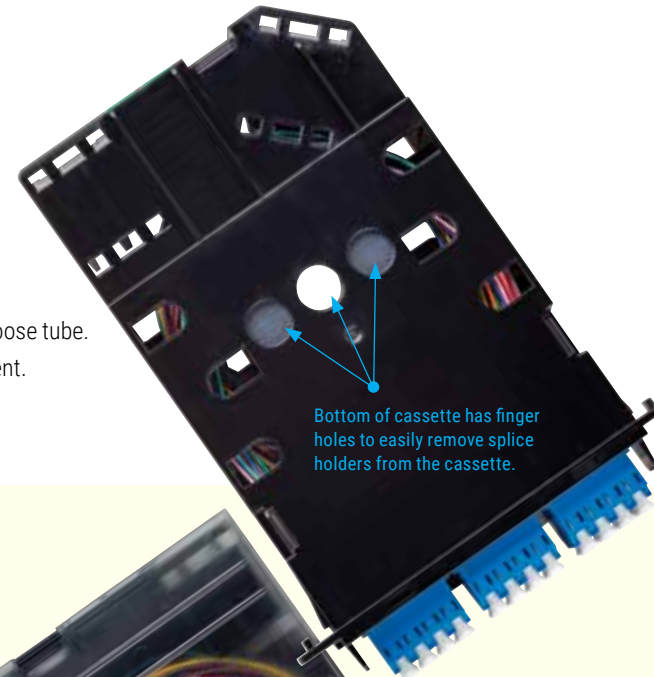
5.0 mm
3.0 mm
2.0 mm



FIBER SPLICE CASSETTE

FEATURES AND BENEFITS

- » Each pre-terminated splice cassette includes splice holder(s), cable retention holder(s), 40mm splice shrink sleeves, fiber pigtails, and a populated adapter plate.
- » Designed to terminate up to 24-fibers.
- » Splice blocks include a patent-pending double sided access, designed to hold 12 splice sleeves.
- » Clear cover allows for quick and easy visual inspection.
- » Backward compatible to most of our standard 600 series rack, wall, and zone fiber enclosures.
- » Fits a variety of cable applications, including tight buffered, fiber units, micro-distribution, and loose tube.
- » Removable adapter plate creates an easier installation experience and quicker cable management.
- » New latch design for inserting into fiber enclosure - no "push-pin" holders needed.
- » Optional MTP/MPO trunk cable entry.



PART NUMBER CONFIGURATION

Example: FSCS324QLCP

Description: OCC Splice Cassette, Base & Cover, Quad Aqua LC x 6, OM3, Pre-Terminated with Pigtails

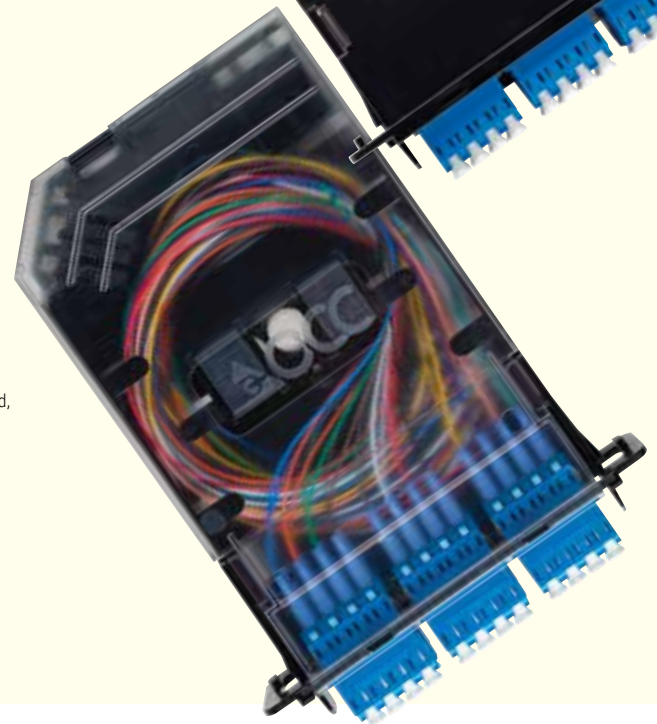
	CABLE/FIBER TYPE	PORT COUNT	CONNECTOR TYPE ²	CODE ³
FSCS	3	24	QLC	P
FSCS	1	2	3	4

Box 1	Box 2	Box 3	Box 4
1 = 62.5 μm (OM1)	6 = 6-Fibers/Connectors	SFC = Simplex FC	P = Pre-Terminated, Includes Fiber Pigtails ³
2 = 50 μm (OM2)	12 = 12-Fibers/Connectors	SST = Simplex ST	
3 = 50 μm (OM3)	24 = 24-Fibers/Connectors ¹	SSC = Simplex SC	
4 = 50 μm (OM4)		DLC = Duplex LC	
8 = Single-Mode (SM/UPC)		DLC = Duplex LC	
A = Angled Polish (SM/APC) ²		DSC = Duplex SC	
		QLC = Quad (4-Way) LC	

¹ 24 Fibers/Connectors are only available in a QLC Quad configuration.

² Angle and Ultra-Polished connector types are only available with single-mode fiber configurations.

³ NOTE: Cassettes that exclude the last digit "P" are not loaded with fiber.



CONNECTOR & ADAPTER COLOR CODES

CONNECTOR	COLOR
SM-APC (Angled Polish Connector)	GREEN
SM-UPC (Ultra Polish Connector)	BLUE
OM1-PC	BEIGE
OM2/OM3/OM4-PC	AQUA

CABLE/FIBER TYPE	MAXIMUM INSERTION LOSS	MINIMUM RETURN LOSS
SINGLE-MODE (FC, SC, ST, LC)	0.30dB	50dB
SINGLE-MODE UPC (FC, SC, ST, LC)	0.25dB	55dB
MULTIMODE (FC, SC, ST, LC)	0.40dB	N/A
ANGLE POLISH (APC) FC, LC, SC	0.30dB	65dB

Testing: See OCC Fiber test spec DWG# 104894 for appropriate test requirements. Test data required for each fiber assembly connector end.

OCC ROANOKE, VA

Corporate Headquarters and Fiber Optic Cable Manufacturing Facility
5290 Concourse Drive
Roanoke, VA 24019 USA
540.265.0690 or 800.622.7711

OCC DALLAS, TX

Harsh Environment and Specialty Connectivity Manufacturing Facility
1700 Capital Avenue, Suite 150
Plano, TX 75074 USA
972.509.1500 or 877.509.1500

OCC ASHEVILLE, NC

Enterprise Connectivity Manufacturing Facility
33 Superior Way
Swannanoa, NC 28778 USA
828.298.2260 or 800.880.7674

**VISIT US AT
OCCFIBER.COM**