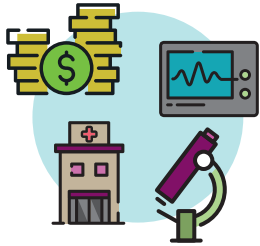


# A Quickstart Guide to Value Based Care



## THE FEE-FOR-SERVICE (FFS) MODEL

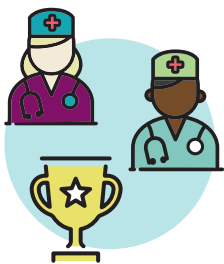
In the industry's reliance on the current model of payment reimbursement, FFS, healthcare providers are incentivized based on the volume or number of tests, procedures, and/or visits ordered, often in the (more expensive) hospital setting.



## VALUE-BASED CARE (VBC)

Value-based care models link primary care physician reimbursement incentives to health outcomes and cost-efficiency.

Our VBC model encourages a collaborative approach to care by utilizing care coordination teams to improve member health outcomes and experience, while reducing the total cost of care.



## CARE COORDINATION

Without a dedicated team of professionals, your client's greatest asset has little hope of effectively utilizing their health benefits.

Our Care coordination teams identify patients who require higher levels of care and ensure that care is delivered in the appropriate order, at the most appropriate place and time, for an efficient, sustainable cost.

## Fast Lane

### FFS:

Incentivizes volume of services provided

### VBC:

Incentivizes cost-efficiency and quality care.

Encourages collaborative care utilizing care coordination teams.

### Care Coordination:

Care coordination teams coordinate care to ensure improved health outcomes for your client's employees.

**Healthcare Highways is taking healthcare off cruise control. Reduce your clients' healthcare benefits costs up to 20% with our innovative model, while vastly improving the overall healthcare experience. Contact Healthcare Highways today!**

sales@healthcarehighways.com

844-365-1630

www.healthcarehighways.com

