

1) LOCATION

PLACE THE CHARGER IN A WELL VENTILATED AREA

HOT AIR

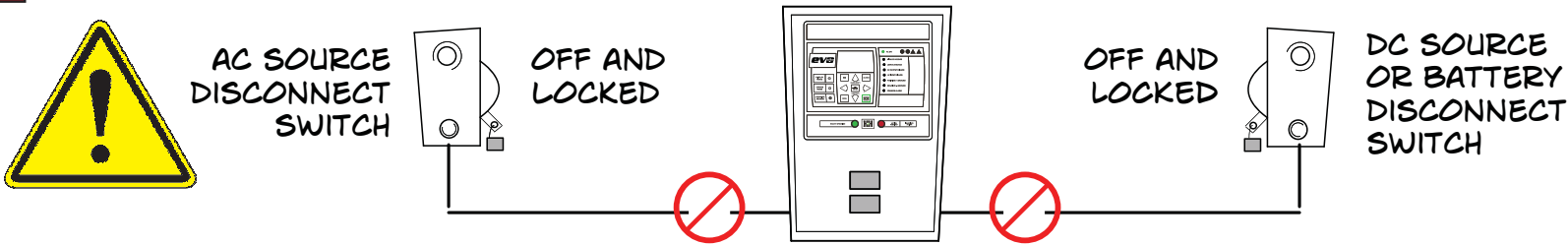
COOL AIR

6in/153mm

6in/153mm

2) SAFETY FIRST

DISCONNECT AND LOCK-OUT ALL AC SOURCES AND DC BATTERY VOLTAGES



3) ELECTRICAL CONNECTIONS

A) CONNECT AC POWER TO THE CHARGER

AC SOURCE VOLTAGE

AC VOLTS AND PHASE

AC INPUT VOLTAGE

BATTERY CHARGER DATA NAMEPLATE

TAG ON AC BREAKER

WARNING TAG

ALL THESE PARAMETERS MUST MATCH !

B) CONNECT THE BATTERY OR DC BUS

TAG ON DC BREAKER

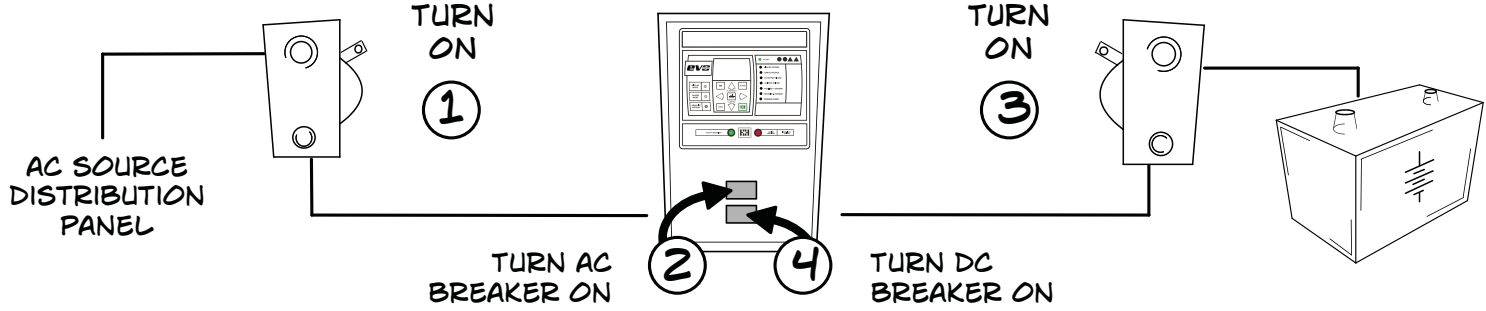
FACTORY PRESET VOLTAGES

BATTERY OR DC BUS

PLEASE CHECK THE OPERATING INSTRUCTIONS PROVIDED WITH YOUR BATTERY FOR PROPER CHARGING VOLTAGES

4) STARTING THE CHARGER

RECHECK YOUR WIRING! IF IT IS CORRECT, FOLLOW THE START SEQUENCE BELOW



5) SETTING THE PARAMETERS

ADJUSTABLE PARAMETERS (IN SELECTION ORDER):

1) FLOAT VOLTAGE

2) EQUALIZE VOLTAGE

3) EQUALIZE TIMER HOURS

4) HIGH DC VOLTAGE ALARM

5) LOW DC VOLTAGE ALARM

6) CURRENT LIMIT

PRESS THE ENTER KEY ONCE TO BEGIN THE ADJUSTMENT PROCESS. THE FIRST VALUE (FLOAT VOLTAGE) WILL BE DISPLAYED. ADJUST THIS VALUE BY PRESSING THE UP OR DOWN ARROW KEYS. PRESS "ENTER" AGAIN TO SAVE AND ADVANCE TO THE NEXT PARAMETER FOR ADJUSTMENT. REPEAT THIS PROCESS TO ADJUST THE REST OF THE PARAMETERS LISTED ABOVE.

IF NO KEYS ARE PRESSED FOR 25 SECONDS, THE CHARGER WILL RETURN TO NORMAL OPERATION.

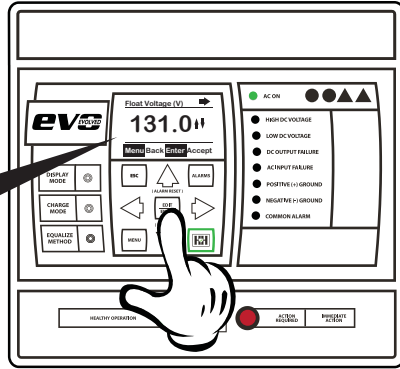
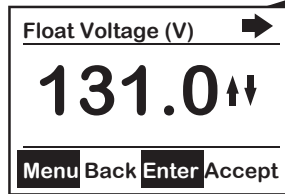
FOR FURTHER INSTRUCTIONS BE SURE TO READ THE OPERATING AND SERVICE INSTRUCTIONS OR VISIT ONLINE AT ... ATSERIES-NET

DONE!

PLEASE CHECK THE OPERATING INSTRUCTIONS
PROVIDED WITH YOUR BATTERY
FOR PROPER CHARGING VOLTAGES

5-1) SETTING THE
FLOAT VOLTAGE

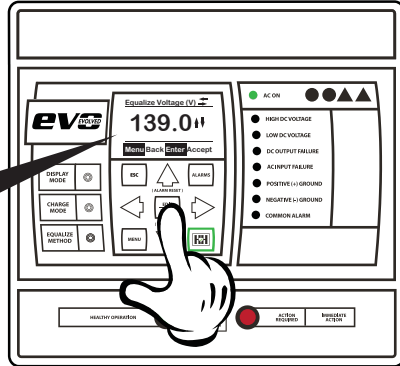
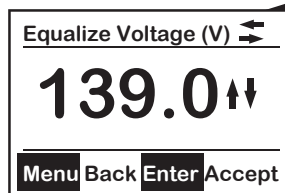
SEE MANUAL
SECTION 3.3



- PRESS EDIT/ENTER KEY
LCD SCREEN WILL DISPLAY THE FLOAT VOLTAGE
- PRESS THE ARROW KEYS
UP ARROW KEY WILL INCREASE
DOWN ARROW KEY WILL DECREASE
- PRESS EDIT/ENTER KEY
WILL SAVE YOUR CHANGES
AND GO TO THE NEXT PARAMETER

5-2) SETTING THE
EQUALIZE VOLTAGE

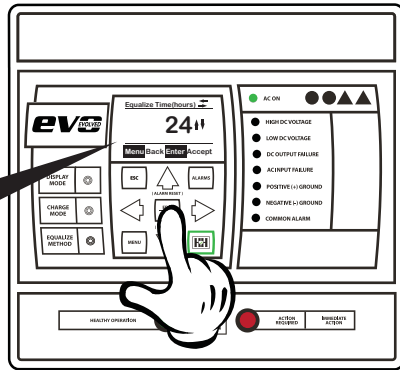
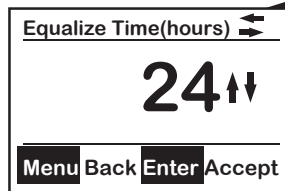
SEE MANUAL
SECTION 3.3



- PRESS EDIT/ENTER KEY
LCD SCREEN WILL DISPLAY THE EQUALIZE VOLTAGE
- PRESS THE ARROW KEYS
UP ARROW KEY WILL INCREASE
DOWN ARROW KEY WILL DECREASE
- PRESS EDIT/ENTER KEY
WILL SAVE YOUR CHANGES
AND GO TO THE NEXT PARAMETER

5-3) SETTING THE
EQUALIZE
TIMER

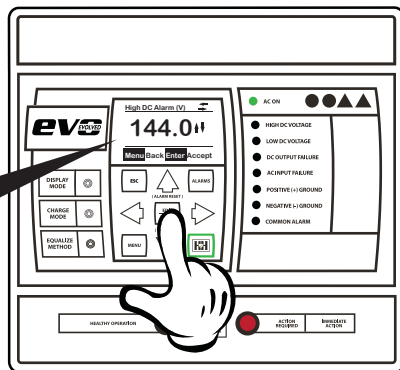
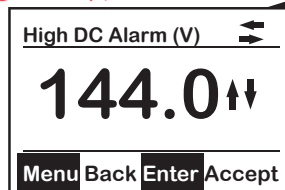
SEE MANUAL
SECTION 3.3



- PRESS EDIT/ENTER KEY
LCD SCREEN WILL DISPLAY THE EQUALIZE TIMER
- PRESS THE ARROW KEYS
UP ARROW KEY WILL INCREASE
DOWN ARROW KEY WILL DECREASE
- PRESS EDIT/ENTER KEY
WILL SAVE YOUR CHANGES
AND GO TO THE NEXT PARAMETER

5-4) SETTING THE
HIGH DC VOLTAGE
ALARM

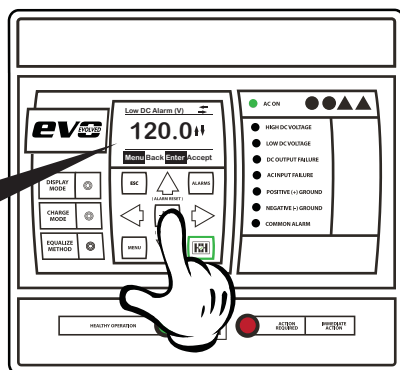
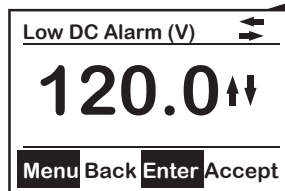
SEE MANUAL
SECTION 3.3



- PRESS EDIT/ENTER KEY
LCD SCREEN WILL DISPLAY THE HIGH DC ALARM (V)
- PRESS THE ARROW KEYS
UP ARROW KEY WILL INCREASE
DOWN ARROW KEY WILL DECREASE
- PRESS EDIT/ENTER KEY
WILL SAVE YOUR CHANGES
AND GO TO THE NEXT PARAMETER

5-5) SETTING THE
LOW DC VOLTAGE
ALARM

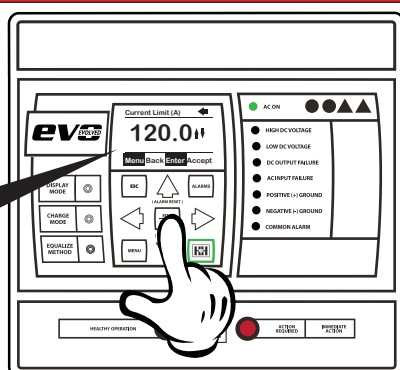
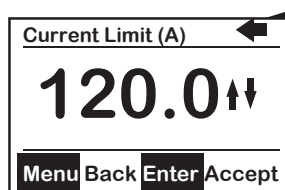
SEE MANUAL
SECTION 3.3



- PRESS EDIT/ENTER KEY
LCD SCREEN WILL DISPLAY THE LOW DC ALARM (V)
- PRESS THE ARROW KEYS
UP ARROW KEY WILL INCREASE
DOWN ARROW KEY WILL DECREASE
- PRESS EDIT/ENTER KEY
WILL SAVE YOUR CHANGES
AND GO TO THE NEXT PARAMETER

5-6) SETTING THE
CURRENT LIMIT

SEE MANUAL
SECTION 3.3



- PRESS EDIT/ENTER KEY
LCD SCREEN WILL DISPLAY THE CURRENT LIMIT
- PRESS THE ARROW KEYS
UP ARROW KEY WILL INCREASE
DOWN ARROW KEY WILL DECREASE
- PRESS EDIT/ENTER KEY
WILL SAVE YOUR CHANGES
AND GO TO THE NEXT PARAMETER