

Power

Collect™ 600

48Vdc Small Cell Power Supply with Inbuilt Battery



- › 48V/600W telecom grade outdoor power system, Class 4/IP65
- › Integrated battery backup increases system availability and end-user Quality of Experience (QoE)
- › Key features enable outdoor small cell deployments
 - Small physical size (16" x 9" x 6") alleviates optical intrusion concerns
 - Light weight (25lb) design maximizes options for deployment on poles and walls
 - Easy to install by a single technician within minutes
- › Reduced OPEX resulting from maintenance-free battery & enclosure, and high efficiency rectifier design
- › Advanced monitoring and control, including SNMP, at both the system level and for individual circuits

Collect™ 600 overcomes all of the challenges associated with providing DC power with battery backup for small cells. This small, lightweight, connectorized unit was designed for consistent, repeatable installation. Six individual circuits, with integrated over current protection, and plug-and-play connectors ensure a sufficient number of circuits for site components, all without having to worry about fuses or breakers. Full output power is achieved with either 120Vac or 240Vac input power and with temperatures ranging from -40 to 46°C (-40 to 115°F) plus solar loading. Collect 600 comes with a universal mounting bracket for mounting on poles, walls, or combination brackets. To meet the aesthetic challenges, the product can be offered with a primer finish that can be painted to any color needed to meet municipality or landlord requirements. The economical design and standard features provide industry-leading total cost of ownership for small cell DC power.

Collect 600 48Vdc Small Cell Power Supply with Inbuilt Battery

Part Number: 0100021-001

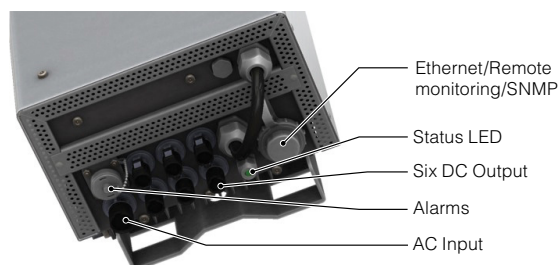
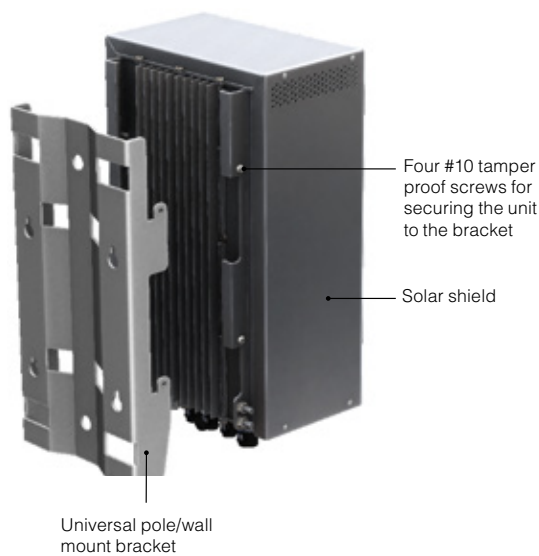
Electrical

AC nominal input:..... 100 to 277Vac
 AC input frequency:..... 45 to 65Hz
 Output voltage:.....-48 to -55Vdc
 Output power:.....600W continuous
 Efficiency:.....>94.5%
 Electrical noise:.....<30mV RMS (to 10MHz)
 <150mV pk to pk (to 100MHz)
 Acoustic noise:.....<40dBA at 1m (3ft)
 Power backup:3.2Ah

Mechanical

Dimensions
 mm:.....382H x 236W x 165D (195 w/bracket)
 inches:..... 15H x 9.3W x 6.5D (7.7 w/bracket)
Weight:<11kg (24lbs)
Mounting:Bracket for pole and wall mounting
Connections (IP65 cable glands):

- Six (6) DC Output
- AC Input
- Alarms
- Ethernet



Environmental

Temperature:
 Operation:.....-40 to 46°C (-40 to 115°F) plus solar loading
 Storage:-40 to 85°C (-40 to 185°F)
Environmental protection: IP65
Surge protection:6kV/3kA
Humidity:5 to 100% RH
Elevation:-500 to 2000m (-1640 to 6561ft)

Performance/Features

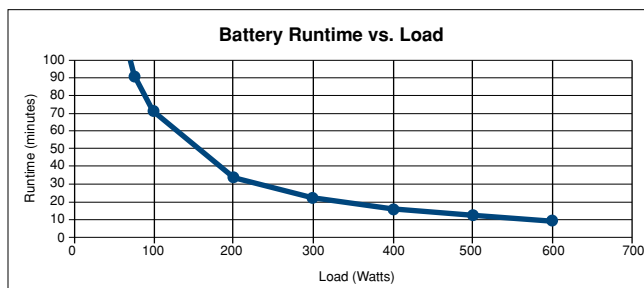
Power backup runtime: 15 min @ 450W load

Alarms:

- AC Fail
- On Battery
- BMS Failure
- DC Error

LED:.....Green: DC Output OK

Remote monitoring:.....Ethernet, SNMP



Agency Compliance

Safety:IEC/CSA/UL 60950-1
 IEC/CSA/UL 60950-22
 CE Mark
EMC:.....CFR47 (FCC) Part 15 Class A
 EN 55022 class A
 EN 61000-3-2, 3-3
 ETSI 300 386-2
Immunity:.....EN 61000-4-2, 4-3, 4-4, 4-5, 4-6, -4-11
 ANSI / IEEE C62.41 CatB3
NEBS:.....GR-63-CORE, GR-1089-CORE,
 GR-3108-CORE, GR-3168-CORE