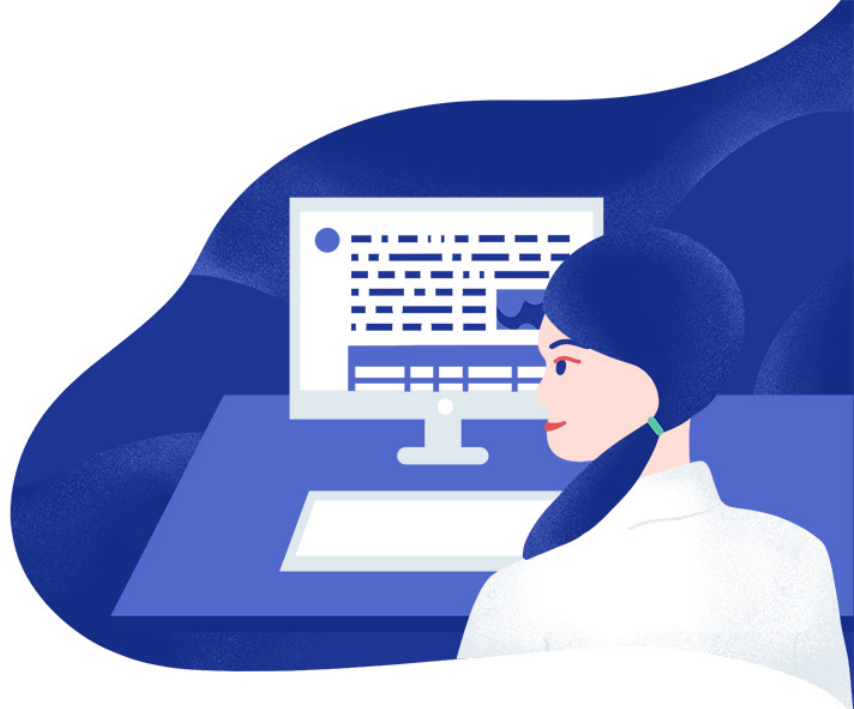


**LABTWIN FOR R&D REPORTS
WITH SENSITIVE GLP AND
GMP DATA**



LABTWIN FOR R&D REPORTS WITH SENSITIVE GLP AND GMP DATA

Gathering scientific information with different formats from several platforms to create one single solid report together with your voice notes.

IS YOUR RESEARCH INFORMATION SPREAD ACROSS SEVERAL PLATFORMS WITH DIFFERENT REGULATIONS AND RIGID FORMATS?

Researchers often generate and store their information in several locations, with different formats due to regulations (such as GLP and GMP), specific nomenclature and rigid structure. These results in time loss given the normalization of formatting, importing and exporting issues, as well as human and digital mistakes when putting all the data together.

A-HA MOMENT

Scientific data should be linked, holistic and accurate. For this, researchers often rely on an editing software, programs related to analysis equipment and lab book notes. The new web-app editor is versatile enough to accept tables from spreadsheet programs, rich-format text forms from word processors and images and transcribed voice notes with scientific notation.



“I used to have my literature review in one program and my data analysis in another, in different computer with restrictive access.”

LabTwin User

Scientist, Top 10 Pharma Company



ALL DATA IN ONE PLACE

- > LabTwin supports you in bringing together and shaping your GLP and GMP research results in order to turn them into a comprehensive scientific document to share with other experts.

Contact us to **book a free information session**.



KEY TAKEAWAYS

- > LabTwin's new Report Editor is a reliable and versatile tool to create insightful documents and remain GLP and GMP compliant

“With LabTwin's Report Editor my voice notes are turned into text that I can edit with scientific notation and put together with tables, text and images from regulated environments.”

LabTwin User

Scientist, Top 10 Chemical Company