

# Saving Lives While Increasing Your ROI



## LifeSaver Mobile

Use Aware360's LifeSaver for your fleets today

The average commercial fleet will experience a 20% collision rate in the next 12 months, so repairing these fleets and insurance premiums can be costly.

LifeSaver changes the culture of distracted driving by automatically detecting drives and blocking cell phone use without additional hardware. LifeSaver is an easy to deploy, software-based solution which minimizes phone-based distractions for employees while driving.

The solution ensures compliance with distracted driving legislation and provides managers with a simple tool to ensure their policies are followed. Adding LifeSaver to your fleet has been shown to reduce at-fault collisions by 25-50%, increasing your employees' safety and reducing insurance premiums. Taking a proactive approach to safety, LifeSaver maximizes your ROI by keeping your assets and your employees on the road so that your fleet has maximum productivity.



## About Aware360

Aware360 understands people are the most important part of any workplace and provides the tools to keep employees safe throughout their day. Safe employees mean less downtime and increased productivity. Driven by our passion for people, the Aware360 suite of safety solutions leverages personal technology such as smartphones, wearables and satellite devices to keep people safe and productive. Find out more about our products at [Aware360.com](http://Aware360.com).



real time data. real time decisions.™

Contact us for more information

 [aware360.com](http://aware360.com)  [info@aware360.com](mailto:info@aware360.com)

# LifeSaver Mobile

Use Aware360's LifeSaver for your fleets today

## How LifeSaver Works

1



### Download the App

Identify employees who drive for work purposes and have them download the App or push it out through an MDM.

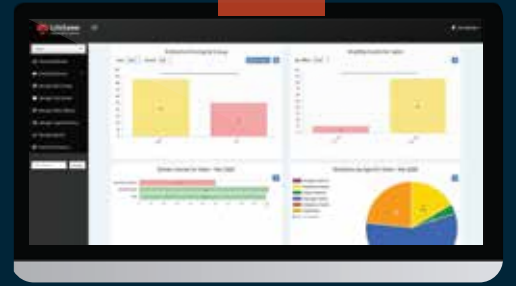
2



### Automatic Blocking

While workers drive, the app will automatically block their phone screen. Configure apps to allow and ability to unlock in the portal.

3



### Insights and Feedback

Managers and supervisors gather insights from the LifeSaver Portal to tailor feedback (good and bad) to specific workers.

## Why use Aware 360's LifeSaver?

- ✓ Proven to reduce at-fault collisions by 25-50%
- ✓ Provides a substantial return on investment (ROI)
- ✓ Cost effective and quick to deploy
- ✓ App-based, no hardware installation means no downtime for your fleet
- ✓ Promotes self-correction and real time visual intervention
- ✓ Allows for hands-free calls and map directions
- ✓ Automatically detects driving

