

# Uninterruptible power supply PC Combi UPS



## General Data

Rated input voltage: 100 - 240 Vac
Rated output voltage: 24 Vdc
Rated output current: 5 A
Recommended battery modules: 1.2 - 12 Ah
Ambient temperature: -25 °C to +70 °C
Protection index IP 20

## Advantages

Combined power supply with charging and controlling unit
Fast tripping of conventional circuit breakers
Battery modules get detected automatically
Reliable signalling when there is low remaining life expectancy of connected battery modules
Extended life expectancy through temperature controlled battery management
Interface to visualise and adjust relevant data
Reliable supply of industrial PC's

## Applications

The uninterruptible power supply Power Compact contains an economic DC 24V/5A power supply with basic specifications for industrial computer and also a loading and controlling unit for an ideal battery management.

## Standards

Uninterruptible power supply  
to UL 60950, UL 508

Safety:  
EN 60950, EN 60950 (SELV), EN 60204 (PELV)

EMC:  
EN 61000-6-3 (Interference emissions), EN 61000-6-2 (Interference immunity)

## Approvals



UL/CSA 60950 recognised (E213214), UL508 listed (E219022) Germanischer Lloyd prepared

1.1

1.2

1.3

2.1

2.2

3.1

3.2

3.3

4.0

5.1

5.2



## Uninterruptible power supply PC Combi UPS



Typ		PC-1024-050-0
Electrical data	<b>Input</b>	
	Input rated voltage	100 - 240 Vac
	Input voltage range	85 - 264 Vac (120 - 372 Vdc)
	AC input derating	-1.5 % / Vac < 110 Vac
	DC input derating	-1 % / Vdc < 150 Vdc
	Rated frequency range	47 Hz - 63 Hz / 0 Hz
	Input rated current (rated load)	1.96 A / 0.95 A (100 / 230 Vac)
	Starting current limiter	< 30 A, NTC
	Switch-on time	< 200 ms
	Input fuse internal	4 A (time-lag)
	Recommended back-up fuse (circuit breaker)	6 A, 10 A, 16 A, characteristic B, C
	Transient surge voltage protection	Varistor
	<b>Output</b>	
	Output rated current	5.00 A
	Tripping of LS circuit breakers	max. B4
Parallel connection	Only with redundancy module, max. 5 A output current	
Serial operation	Yes	
Ripple factor	typ. 50 mVss	
Output rated voltage	24 Vdc	
Over-voltage-protection	typ. 38 Vdc	
Rated output voltage (normal mode)	24 Vdc	
Rated output voltage (buffer mode)	24 Vdc	
Output voltage range (mains operation)	23 - 28.5 Vdc	
Output voltage range (battery operation)	Battery voltage - 0.5 V (27.5 - 19 Vdc)	
Output voltage limiting (mains operation)	typ. 6.5 A, constant current	
Output voltage limiting (battery operation)	typ. 5.5 A	
Power losses in mains operation (nominal load, battery charged)	22 W (100 Vac) 17W (230 Vac)	
Max. power losses in battery operation (stand-by/nominal load)	3.2 W / 5.2 W	
<b>Storage medium</b>		
Remote shutdown	Yes	
Buffer period	1, 2, 3, 5, 10, 15, 20 Min, PC-Mode, Maximum, Individual	
Type of the storage medium	Accumulator, external	
Reverse connection protection	Yes, (fuse in battery module trips)	
Charging characteristic	3-stage charging process (UoU charging characteristic)	
Charging current	max. 0.6 A	
End-of-charge voltage	26...29,5 V temperature-controlled, adjustable via interface	
Check for presence of battery	1 per minute	
Check remaining battery life	6 per hour	
Deep discharge protection	19 Vdc	
Warning threshold, battery almost flat	20.4 Vdc	
Recommended battery modules	1.2 - 12 Ah	
Parallel connection of battery modules	Yes, max. 3	
<b>Signaling</b>		
Status indicator	3 LED green/yellow/red	
Isolated group input	max. 30 V / 200 mA current limiting (in 3 separate signal outputs)	
Alarm/Bat.Mode/Bat.Charge signal output	Relay, kill switch type, max. 30 V, function adjustable via interface	

Approvals



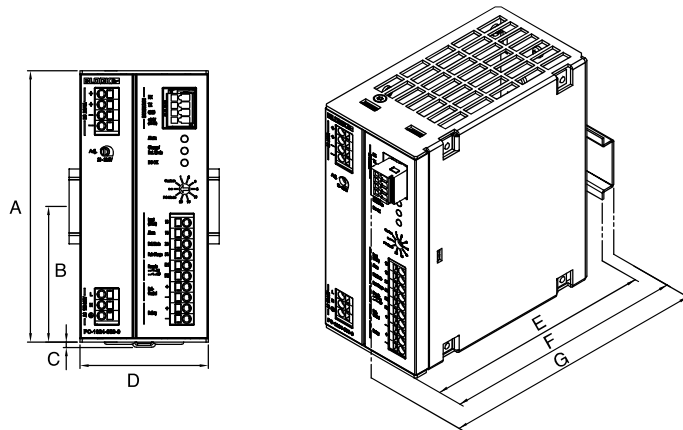
## Uninterruptible power supply PC Combi UPS



Electrical data	Typ	PC-1024-050-0
	Approvals	cURus, cULus, GL
	Environment	
	Ambient temperature	-25 °C ... +70 °C
	Storage temperature	-25 °C ... +85 °C
	Derating	-3 %/K > +50 °C
	Mounting position	horizontal for standard rail DIN TS35
	Type of cooling	natural convection
	Required minimum spacing (left/right)	0 mm
	Required minimum spacing (over/under)	50 mm
Safety and protection		
Protection index	IP 20	
Safety class	I, with PE connection	
Resistance to reverse feed max.	35 Vdc	
Order numbers		
Order Number	PC-1024-050-0	

Mechanical data	Typ	Terminals signalling (direct plug-in technology Push-in)	Terminals output (direct plug-in technology Push-in)	Terminals input (direct plug-in technology Push-in)	Terminals storage medium direct plug-in technology Push-in	Weight	Dimension picture (in mm)	A	B	C	D	E	F	G
		max 2,5 mm <sup>2</sup>	max 2,5 mm <sup>2</sup>	max 2,5 mm <sup>2</sup>	max. 2,5 mm <sup>2</sup>	0.8 kg		127	63.5	3	60	118.5	128	136

### Dimension pictures



## Uninterruptible power supply PVUA



### General Data

Input rated voltage 24 Vdc
Output rated voltage 24 Vdc
Output rated current 10 - 20 A
Ambient temperature -25 °C to +60 °C
Efficiency up to 97 %
Protection index IP 20

### Advantages

Electronic overcurrent and short-circuit protection
Active current limiting in the event of an error
Automatic detection of connected battery module
Reliable early warning signal when battery life expectancy is declining
Extended life expectancy through temperature controlled battery management
Service-friendly spring-loaded connector system
Isolated signal contact
Reverse polarity protection
Exhaustive discharge protection for batteries
Interface to visualise and adjust relevant data
Current and voltage monitoring
Active signal outputs for function monitoring
RS-232 interface
Reliable supply of industrial PC's

### Applications

The charge- and control unit controls and monitors the battery module, warns reliably if the live expectancy of the battery is low and provides information on the charge status and the remaining time during buffering. All relevant data can be shown on the integrated display or accessed through the built-in data interface.

### Standards

Uninterruptible power supply  
to UL 60950, UL 508

Safety:  
EN 60950, EN 60950 (SELV), EN 60204 (PELV)

EMC:  
EN 61000-6-3 (Interference emissions), EN 61000-6-2 (Interference immunity)

### Approvals



UL/CSA 60950 recognised (E213214), UL508 listed (E219022)



## Uninterruptible power supply PVUA



Typ	PVUA 24/24-10	PVUA 24/24-20
<b>Electrical data</b>		
<b>Input</b>		
Input rated voltage	24 Vdc	24 Vdc
Input voltage range	18 - 29 Vdc	18 - 29 Vdc
Current input (idle/charging/max.)	0.1 / 0.8 / 10.8 A	0.1 / 1.5 / 21.5 A
Switching threshold for buffer mode	20 - 25.5 Vdc	20 - 25.5 Vdc
<b>Output</b>		
Output voltage normal operation	typ. U <sub>in</sub> - 1 Vdc (10 A)	typ. U <sub>in</sub> - 1 Vdc (20 A)
Output rated voltage, battery mode	typ. battery voltage - 1 Vdc (10 A)	typ. battery voltage - 1 Vdc (20 A)
Output rated voltage	24 Vdc	24 Vdc
Resistance to reverse feed max.	35 Vdc	35 Vdc
Output rated current	10.00 A	20.00 A
Internal fuse	15 A (slow-blow)	30 A (slow-blow)
Overload behaviour	Constant current with cyclic shutdown	Constant current with cyclic shutdown
Parallel connection	No	No
Serial operation	No	No
max. Power loss idling/nominal load	15 / 20 W	15 / 30 W
Efficiency	typ. 95.4 %	typ. 96.3 %
<b>Storage medium</b>		
Type of the storage medium	Accumulator, external	Accumulator, external
Rated charging voltage	24 Vdc	24 Vdc
Charge voltage range	26 to 29.5 Vdc	26 to 29.5 Vdc
Temperaturnachführung der Ladespannung	automatical or manual	automatical or manual
Charging current	max. 0.6 A	max. 1.0 A
Recommended storage medium	24 Vdc / 1.2 Ah, 3.2 Ah, 7 Ah, 12 Ah	24 Vdc / 7 Ah, 12 Ah
<b>Signaling</b>		
Operating status	LED green, LED red, LED yellow	LED green, LED red, LED yellow
Potential free signal contact	Changeover contact, configurable	Changeover contact, configurable
Active signal outputs	3 x 24 Vdc, 2 configurable	3 x 24 Vdc, 2 configurable
Remote shutdown in buffer mode operation	Yes (break contact)	Yes (break contact)
Display, interface	Yes, RS 232	Yes, RS 232
<b>Approvals</b>		
Approvals	cURus, cULus	cURus, cULus
<b>Environment</b>		
Ambient temperature	-10° C to +60° C	-10° C to +60° C
Storage temperature	-25 °C to +85 °C	-25 °C to +85 °C
<b>Safety and protection</b>		
Protection index	IP 20	IP 20
<b>Accessory</b>		
Connector for signalling	PV-CON (optional)	PV-CON (optional)
Adapter cable for interface	PV-KOK2 (optional)	PV-KOK2 (optional)
Side DIN rail mounting	PV-TS35M (optional)	PV-TS35M (optional)
Direct screw fastening plate for lateral mounting	PV-WB2 (optional)	PV-WB2 (optional)
<b>Order numbers</b>		
<b>Order Number</b>	<b>PVUA 24/24-10</b>	<b>PVUA 24/24-20</b>

1.1

1.2

1.3

2.1

2.2

3.1

3.2

3.3

4.0

5.1

5.2

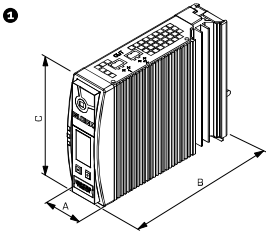


## Uninterruptible power supply PVUA

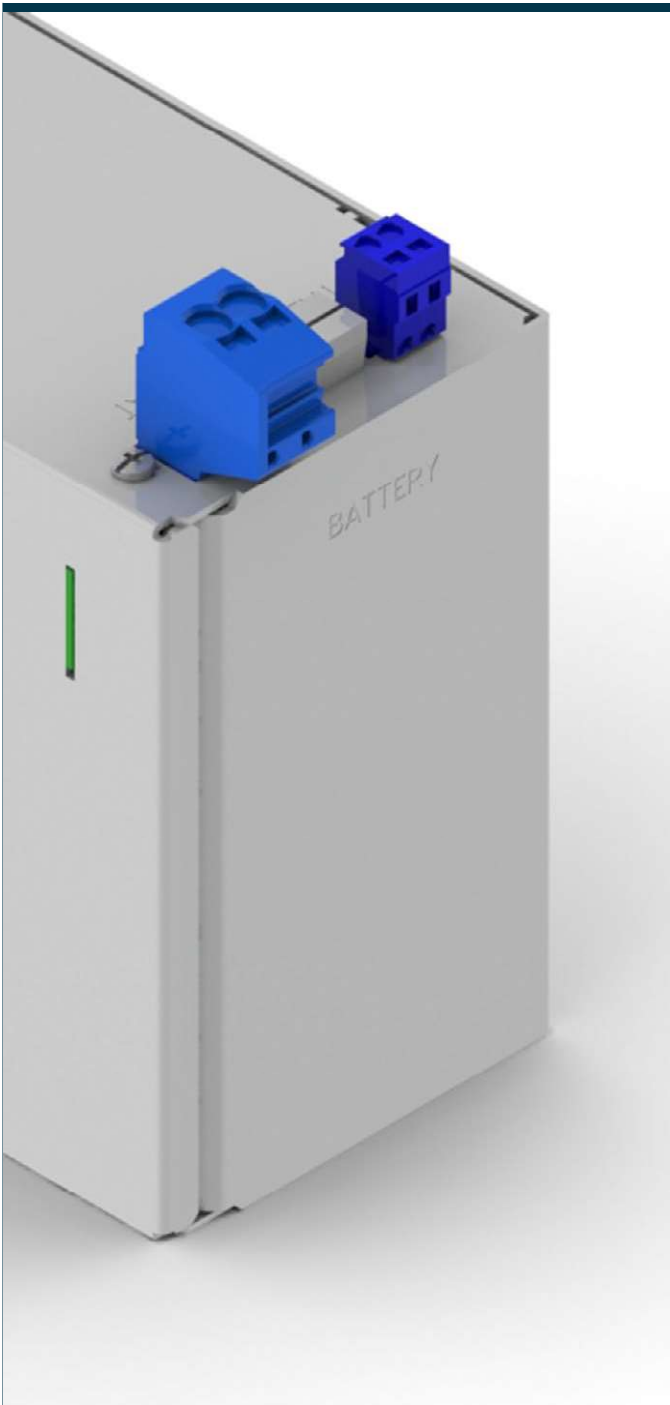


Mechanical data	30											
	Typ	Terminals input, (spring clamp terminal, pluggable)	Terminals output, (spring clamp terminal, pluggable)	Terminals signalling, (spring clamp terminal, pluggable)	Terminals storage medium, (spring clamp terminal, pluggable)	Mounting position	Fixing method	Weight	Dimension picture (in mm)	A	B	C
PVUA 24/24-10		max. 2.5 mm <sup>2</sup>	max. 2.5 mm <sup>2</sup>	max. 0.5 mm <sup>2</sup>	max. 2.5 mm <sup>2</sup>	vertical	DIN Rail system TS35	0.80 kg	1	40	163.5	127
PVUA 24/24-20		max. 10 mm <sup>2</sup>	max. 10 mm <sup>2</sup>	max. 0.5 mm <sup>2</sup>	max. 10 mm <sup>2</sup>	vertical	DIN Rail system TS35	0.80 kg	1	57	163.5	127

### Dimension pictures



## Battery module **PBAT**



### General Data

Input rated voltage 24 Vdc
Output rated voltage 24 Vdc
Protection index IP 20
Ambient temperature -40 °C to +60 °C
Lifetime 15 years / 20°C
Battery module with pure lead rechargeable battery

### Advantages

Automatic detection of battery modules at UPS control unit
Reliable early warning signal when battery life expectancy is declining
Extended life expectancy through temperature controlled battery management
Service-friendly spring-loaded connector system

### Applications

Battery module for setting up a secure 24 VDC supply following mains failure

### Standards

### Approvals

UL 508 (E219022) prepared

1.1

1.2

1.3

2.1

2.2

3.1

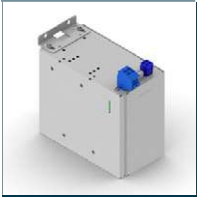
3.2

3.3

4.0

5.1

5.2

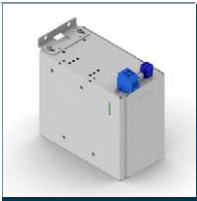


## Battery module PBAT



	Typ	PBAT-1224-025-0	PBAT-1224-130-0
Electrical data	<b>Input</b>		
	Input rated voltage	24 Vdc	24 Vdc
	Rated capacitie	2,5 Ah	13,0 Ah
	<b>Output</b>		
	Output rated voltage	24 Vdc	24 Vdc
	Output rated current	20 A	40 A
	Internal fuse	1x 25 AT	2x 25 AT
	Parallel connection	Yes	Yes
	<b>Storage medium</b>		
	End-of-charge voltage	27 Vdc	27 Vdc
	<b>Environment</b>		
	Ambient temperature	-40 °C...+60 °C	-40 °C...+60 °C
	Storage temperature	-40 °C...+60 °C	-40 °C...+60 °C
	Service life	15 years at +20 °C	15 years at +20 °C
	Latest commissioning (only accumulators)	6 months at +30 °C to +40 °C	6 months at +30 °C to +40 °C
	<b>Safety and protection</b>		
	Protection index	IP 20	IP 20
Safety class	III	III	
<b>Order numbers</b>			
<b>Order Number</b>	<b>PBAT-1224-025-0</b>	<b>PBAT-1224-130-0</b>	



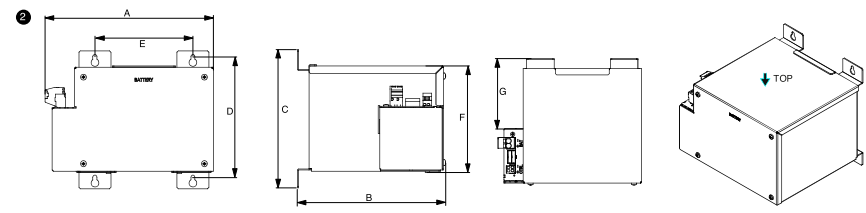
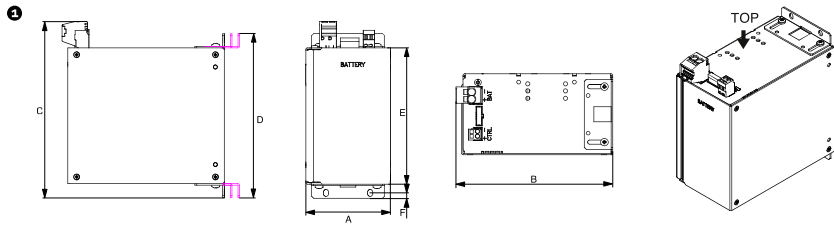


## Battery module PBAT



Mechanical data	Typ	Fixing method	Terminals Output	Terminals Input	Temperature sensor/ communication connection	Weight	Width	Dimension picture (in mm)							
								A	B	C	D	E	F	G	
	PBAT-1224-025-0	Direct screw fastening (optional)	Wago series 831, max. 10 mm <sup>2</sup>	Wago series 831, max. 10 mm <sup>2</sup>	Wago Series 231, 5 mm <sup>2</sup>	3.80 kg	86 mm	1	86	166	180.7	168	139	5.5	-
	PBAT-1224-130-0	Direct screw joint	Wago series 831, max. 10 mm <sup>2</sup>	Wago series 831, max. 10 mm <sup>2</sup>	Wago series 231, max. 2,5 mm <sup>2</sup>	12.30 kg	226 mm	2	226.5	199.5	186.5	163	132	144	110.7

### Dimension pictures



1.1

1.2

1.3

2.1

2.2

3.1

3.2

3.3

4.0

5.1

5.2

## Battery module PVA



### General Data

Input rated voltage 24 Vdc
Output rated voltage 24 Vdc
Capacity 3,2 - 12 Ah
Ambient temperature -10 °C to +40 °C
Protection index IP 20

### Advantages

Automatic detection of connected battery module
Reliable early warning signal when battery life expectancy is declining
Extended life expectancy through temperature controlled battery management
Service-friendly spring-loaded connector system

### Applications

Battery module for building a secure 24 Vdc power supply in case of power failure.

### Approvals



UL 508 (E219022)



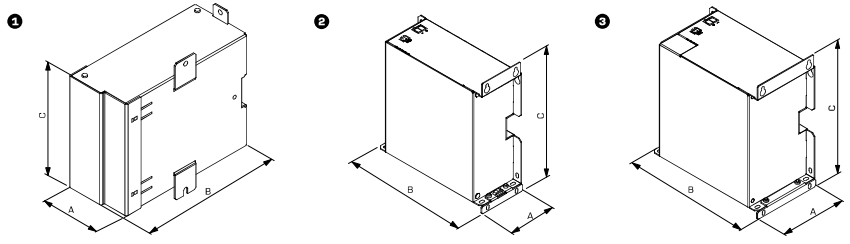
## Battery module PVA



Typ	PVA 24/3,2Ah	PVA 24/7Ah	PVA 24/12Ah
<b>Electrical data</b>			
<b>Input</b>			
Input rated voltage	24 Vdc	24 Vdc	24 Vdc
Rated capacity	3,2 Ah	7,0 Ah	12,0 Ah
<b>Output</b>			
Output rated voltage	24 Vdc	24 Vdc	24 Vdc
Output rated current	max. 20,00 A	max. 40,00 A	max. 40,00 A
Internal fuse	25 A (slow-blow)	2 x 25 A (slow-blow)	2 x 25 A (slow-blow)
Parallel connection	Yes	Yes	Yes
<b>Environment</b>			
Ambient temperature	-10 °C to +40 °C	-10 °C to +40 °C	-10 °C to +40 °C
Storage temperature	-20 °C to +40 °C	-20 °C to +40 °C	-20 °C to +40 °C
Service life	5 years at +20 °C	5 years at +20 °C	5 years at +20 °C
Latest commissioning (only accumulators)	6 months at +30 °C to +40 °C	6 months at +30 °C to +40 °C	6 months at +30 °C to +40 °C
<b>Safety and protection</b>			
Protection index	IP 20	IP 20	IP 20
Safety class	III, without PE connection	III, without PE connection	III, without PE connection
<b>Order numbers</b>			
<b>Order Number</b>	<b>PVA 24/3,2Ah</b>	<b>PVA 24/7Ah</b>	<b>PVA 24/12Ah</b>

Typ	Terminals input / output (spring clamp terminal, pluggable)	Terminals temperature measurement, (spring clamp terminal, pluggable)	Fixing method	Weight	Dimension picture (in mm)			
					A	B	C	
PVA 24/3,2Ah	max. 2.5 mm <sup>2</sup>	max. 2.5 mm <sup>2</sup>	Straps at the case	4.0 kg	1	73	175.5	165
PVA 24/7Ah	max. 10 mm <sup>2</sup>	max. 2.5 mm <sup>2</sup>	Straps at the case	7.1 kg	2	217.5	86	236
PVA 24/12Ah	max. 10 mm <sup>2</sup>	max. 2.5 mm <sup>2</sup>	Straps at the case	10.6 kg	3	120.5	217.5	236

### Dimension pictures



1.1

1.2

1.3

2.1

2.2

3.1

3.2

3.3

4.0

5.1

5.2

## Battery module **PVAF**



### General Data

Input rated voltage 24 Vdc
Output rated voltage 24 Vdc
Capacity 0.8 - 12 Ah
Ambient temperature -10 °C to +40 °C
Protection index IP 20

### Advantages

Automatic detection of battery modules at UPS control unit
Reliable early warning signal when battery life expectancy is declining
Extended life expectancy through temperature controlled battery management
Service-friendly spring-loaded connector system

### Applications

Battery module for building a secure 24 Vdc power supply in case of power failure.

### Approvals



UL 508 (E219022)



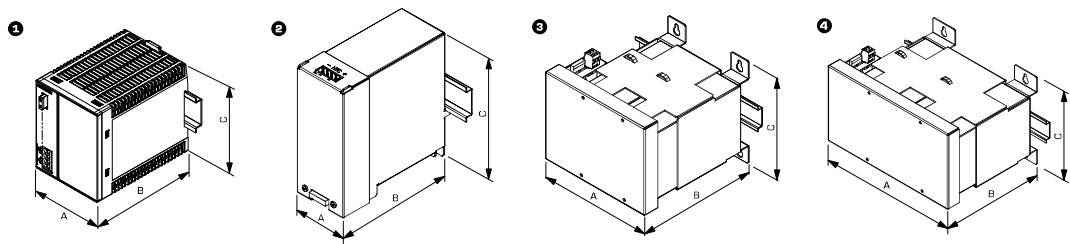
## Battery module PVAF



Typ	PVAF 24/0,8Ah	PVAF 24/1,2Ah	PVAF 24/3,2Ah	PVAF 24/7Ah	PVAF 24/12Ah
<b>Electrical data</b>					
<b>Input</b>					
Input rated voltage	24 Vdc	24 Vdc	24 Vdc	24 Vdc	24 Vdc
Rated capacitie	0,8 Ah	1,2 Ah	3,2 Ah	7,0 Ah	12,0 Ah
<b>Output</b>					
Output rated voltage	24 Vdc	24 Vdc	24 Vdc	24 Vdc	24 Vdc
Output rated current	max. 5 A	max. 7,50 A	max. 20 A	max. 40 A	max. 40 A
Internal fuse	10 A (slow blow)	15 A (slow blow)	25 A (slow blow)	2x25 A (slow-blow)	2x25 A (slow-blow)
Parallel connection	Yes	Yes	Yes	Yes	Yes
<b>Environment</b>					
Ambient temperature	-10 °C to +40 °C	-10 °C to +40 °C	-10 °C to +40 °C	-10 °C to +40 °C	-10 °C to +40 °C
Storage temperature	-20 °C to +40 °C	-20 °C to +40 °C	-20 °C to +40 °C	-20 °C to +40 °C	-20 °C to +40 °C
Service life	5 years at 20 °C	5 years at 20 °C	5 years at 20 °C	5 years at 20 °C	5 years at 20 °C
Latest commissioning (only accumulators)	6 months at 30 - 40 °C	6 months at 30 - 40 °C	6 months at 30 - 40 °C	6 months at 30 - 40 °C	6 months at 30 - 40 °C
<b>Safety and protection</b>					
Protection index	IP 20	IP 20	IP 20	IP 20	IP 20
<b>Order numbers</b>					
<b>Order Number</b>	<b>PVAF 24/0,8Ah</b>	<b>PVAF 24/1,2Ah</b>	<b>PVAF 24/3,2Ah</b>	<b>PVAF 24/7Ah</b>	<b>PVAF 24/12Ah</b>

Order Number	PVAF 24/0,8Ah	PVAF 24/1,2Ah	PVAF 24/3,2Ah	PVAF 24/7Ah	PVAF 24/12Ah
<b>Mechanical data</b>					
<b>Terminal and mounting</b>					
Terminals input / output (spring clamp terminal, pluggable)	max. 2,5 mm <sup>2</sup>	max. 2,5 mm <sup>2</sup>	max. 2,5 mm <sup>2</sup>	max. 10 mm <sup>2</sup>	max. 10 mm <sup>2</sup>
Terminals temperature measurement, (spring clamp terminal, pluggable)	max. 2,5 mm <sup>2</sup>	max. 2,5 mm <sup>2</sup>	max. 2,5 mm <sup>2</sup>	max. 2,5 mm <sup>2</sup>	max. 2,5 mm <sup>2</sup>
Fixing method	DIN Rail system TS35	DIN Rail system TS35	DIN Rail system TS35, screwed mounting	Straps at the case	Straps at the case
<b>Measures and weights</b>					
Weight	1,0 kg	1,8 kg	3,9 kg	5,9 kg	10,2 kg
Dimension picture (in mm)	<b>1</b>	<b>2</b>	<b>3</b>	<b>3</b>	<b>4</b>
A	72	55	80	163	230
B	103,5	136	170,5	173,5	173,5
C	90	126,6	145	145	145

### Dimension pictures



1.1

1.2

1.3

2.1

2.2

3.1

3.2

3.3

4.0

5.1

5.2

## Buffer module PVUC



### General Data

Input rated voltage 24 Vdc
Output rated voltage 24 Vdc
Output rated current 10 - 20 A
Ambient temperature -10 °C to +60 °C
Efficiency typ. 97 %
Protection index IP 20

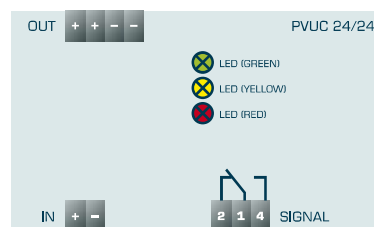
### Advantages

Electronic overcurrent and short-circuit protection
Reverse polarity protection
Configurable switch-in threshold
3 LEDs for signalling purposes
Isolated signal contact
Service-friendly spring-loaded connector system
Parallel connection option
Decoupled output
Panel installation on mounting rails

### Applications

Maintenance-free buffer module to secure the power supply during short power interruptions.

### Sample application



### Standards

Service-free buffer module  
to UL 508

Safety:  
EN 60950, EN 60950 (SELV), EN 60204 (PELV)

EMC:  
EN 61000-6-3 (Interference emissions), EN 61000-6-2 (Interference immunity)

### Approvals



UL 508 (E219022)



## Buffer module PVUC



Typ	PVUC 24/24-10	PVUC 24/24-20
<b>Electrical data</b>		
<b>Input</b>		
Input rated voltage	24 Vdc	24 Vdc
Input voltage range	20 - 30 Vdc	20 - 30 Vdc
Current input (idle/charging/max.)	60 mA / 1 A / 11 A	60 mA / 1 A / 22 A
Switching threshold for buffer mode	20 - 24 Vdc	21 - 24 Vdc
<b>Output</b>		
Output rated voltage	24 Vdc	24 Vdc
Output voltage normal operation	typ. U <sub>in</sub> - 0.5 Vdc (10 A)	typ. U <sub>in</sub> - 1 Vdc (20 A)
Output rated voltage, battery mode	20 - 24 Vdc (adjustable)	20 - 24 Vdc (adjustable)
Resistance to reverse feed max.	35 Vdc	35 Vdc
Output rated current	10.00 A	20.00 A
Buffer period	0.4 s (10 A) / 6.3 s (1 A)	0.4 s (20 A) / 15.5 s (1 A)
Charging time	typ. 5 minutes	typ. 5 minutes
Internal fuse	No	No
Overload behaviour	Constant current (typ. 11 A)	Constant current (typ. 22 A)
Parallel connection	Yes	Yes
Serial operation	No	No
max. Power loss idling/nominal load	1.5 / 6.5 W	1.5 / 15 W
Efficiency	typ. 97 %	typ. 97 %
<b>Storage medium</b>		
Type of the storage medium	Capacitors, internal	Capacitors, internal
<b>Signaling</b>		
Operating status	LED green, LED red, LED yellow	LED green, LED red, LED yellow
Potential free signal contact	Changeover contact	Changeover contact
Active signal outputs	No	No
Display, interface	No	No
<b>Approvals</b>		
Approvals	cULus	cULus
<b>Environment</b>		
Ambient temperature	-10 °C to +60 °C	-10 °C to +60 °C
Storage temperature	-25 °C to +85 °C	-25 °C to +85 °C
<b>Safety and protection</b>		
Protection index	IP 20	IP 20
Safety class	III, without PE connection	III, without PE connection
Reverse connection protection	Yes	Yes
<b>Accessory</b>		
Side DIN rail mounting	PV-TS35M (optional)	PV-TS35M (optional)
Direct screw fastening plate for lateral mounting	PV-WB2 (optional)	PV-WB2 (optional)
<b>Order numbers</b>		
<b>Order Number</b>	<b>PVUC 24/24-10</b>	<b>PVUC 24/24-20</b>

1.1

1.2

1.3

2.1

2.2

3.1

3.2

3.3

4.0

5.1

5.2



## Buffer module PVUC



Mechanical data	Type	Terminals input, (spring clamp terminal, pluggable)	Terminals output, (spring clamp terminal, pluggable)	Terminals signalling, (spring clamp terminal, pluggable)	Mounting position	Fixing method	Weight	Dimension picture (in mm)				
		A	B	C	D	E						
	PVUC 24/24-10	max. 2.5 mm <sup>2</sup>	max. 2.5 mm <sup>2</sup>	max. 2.5 mm <sup>2</sup>	vertical	DIN Rail system TS35	1 kg	57	179.5	127	76	12.5
	PVUC 24/24-20	max. 10 mm <sup>2</sup>	max. 10 mm <sup>2</sup>	max. 2.5 mm <sup>2</sup>	vertical	DIN Rail system TS35	1 kg	57	179.5	127	76	12.5

### Dimension pictures

