

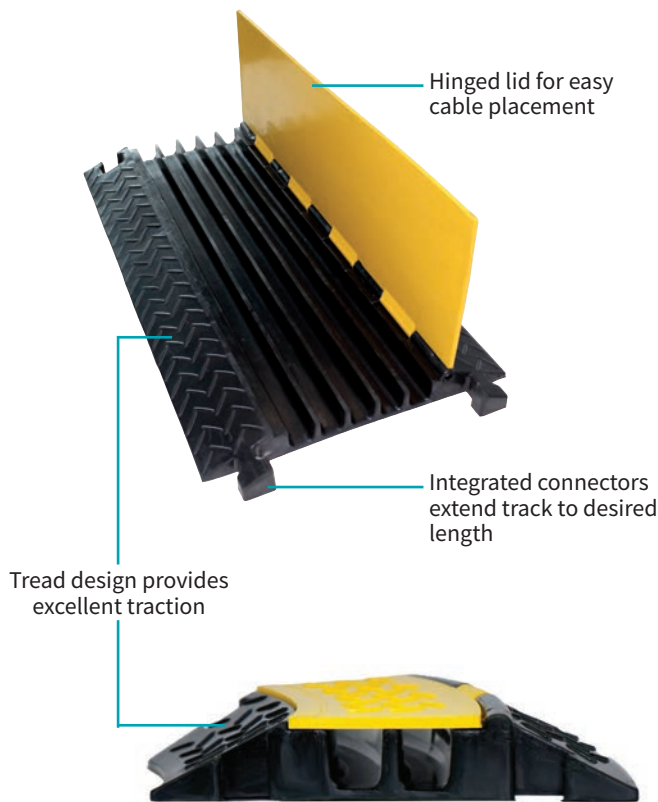
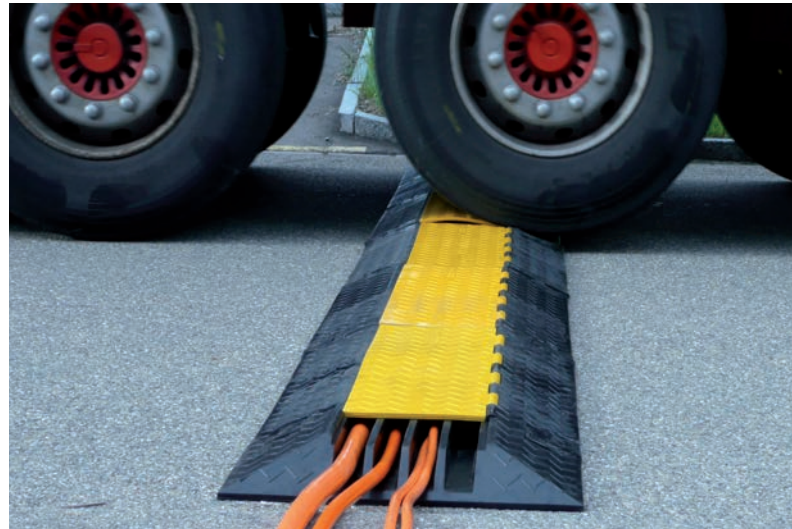
CABLE PROTECTORS

CHOOSING THE RIGHT MODEL

WHY USE CABLE PROTECTORS

- Protect your cables, cords, and hose lines from pedestrian traffic, vehicle traffic and heavy-duty equipment movement
- Ideal for local events, festivals, sporting events, construction sites, conventions centers, manufacturing floor, or warehouse
- Cost-effective solution helps prevent damage caused by wire vibration, contact with other heat producing equipment or from tripping/cable pull
- Improve accessibility

Cable protection systems are offered in a variety of sizes to suit all types of INDOOR/OUTDOOR applications.



WHAT TO CONSIDER

Size - How many cables do you want to protect? Protect 1, 2, 4, or 5 cables within the same cable protection system.

Cable Diameter - Make sure that your cables will fit into the cable protector by choosing the proper channel width and height.

Load Capacity - What will be crossing the path of the cables? With capacities up to 800,000 lbs. per axle (load that a vehicle will put on a cable protectors as they drive over them), cable protectors can withstand thousands of pounds and endure constant impact.

Our **Heavy-Duty** cable protectors are ideal for vehicles, hauling trucks, or forklifts and have a maximum axle load of 9 tons.

Our **Light-Duty** cable protectors are best for light to heavy pedestrian walking, light commercial and utility applications.

39870020

Specifications

Color	Black/Yellow
Material	SBR/NBR Solid Rubber
Overall Size (LxWxH)	39.37" x 9.84" x 1.89" or 1000 x 250 x 48mm
Axle Load Max	9t
Integrated Connector	Yes
Number of Channels	2
Channel Size (WxH)	(2x) 1.10" x 1.18" or 28 x 30mm
Net Weight	7.5 kg or 165.35 lbs



39870021

Specifications

Color	Black/Yellow
Material	SBR/NBR Solid Rubber
Overall Size (WxH)	30° Curve x 9.84" x 1.89" or 250 x 48 mm
Axle Load Max	9t
Integrated Connector	No
Number of Channels	2
Channel Size (WxH)	(2x) 1.10" x 1.18" or 28 x 30mm
Net Weight	1.9 kg or 4.19 lbs



39870022

Specifications

Color	Black
Material	SBR/NBR Solid Rubber
Overall Size (LxWxH)	5.91" x 9.84" x 1.89" or 150 x 250 x 48mm
Axle Load Max	9t
Integrated Connector	No
Number of Channels	2
Channel Size (WxH)	(2x) 1.10" x 1.18" or 28 x 30mm
Net Weight	2 kg or 4.41 lbs



39870023

Specifications

Color	Black
Material	SBR/NBR Solid Rubber
Overall Size (LxWxH)	1.77" x 1.18" x 1.50" or 45 x 30 x 38mm
Axle Load Max	9t
Integrated Connector	-
Number of Channels	-
Channel Size (WxH)	-
Net Weight	0.1 kg or 0.22 lbs



39870040

Specifications

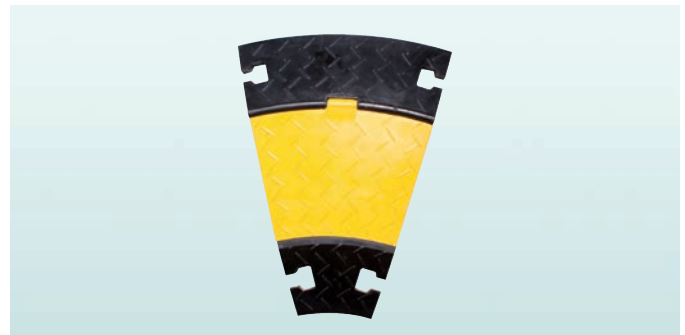
Color	Black/Yellow
Material	SBR/NBR Solid Rubber
Overall Size (LxWxH)	31.49" x 23.22" x 3.07" or 800 x 590 x 78mm
Axle Load Max	9t
Integrated Connector	No
Number of Channels	4
Channel Size (WxH)	(2x) 2.04" x 2.04" or 52 x 52mm (2x) 1.18" x 2.04" or 46 x 52mm
Net Weight	23 kg or 50.71 lbs



39870041

Specifications

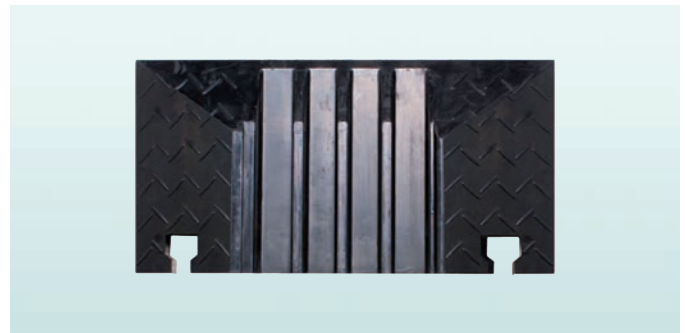
Color	Black/Yellow
Material	SBR/NBR Solid Rubber
Overall Size (WxH)	30° Curve x 23.23" x 3.07" 590 x 78 mm
Axle Load Max	9t
Integrated Connector	No
Number of Channels	4
Channel Size (WxH)	(2x) 2.04" x 2.04" or 52 x 52mm (2x) 1.18" x 2.04" or 46 x 52mm
Net Weight	8.9 kg or 19.62 lbs



39870042

Specifications

Color	Black
Material	SBR/NBR Solid Rubber
Overall Size (LxWxH)	11.81" x 2.28" x 3.07" or 300 x 58 x 78mm
Axle Load Max	9t
Integrated Connector	No
Number of Channels	4
Channel Size (WxH)	(2x) 2.04" x 2.04" or 52 x 52mm (2x) 1.18" x 2.04" or 46 x 52mm
Net Weight	6.6 kg or 14.55 lbs



39870043

Specifications

Color	Black
Material	SBR/NBR Solid Rubber
Overall Size (LxWxH)	4.13" x 1.85" x 1.97" or 105 x 47 x 50 mm
Axle Load Max	9t
Integrated Connector	-
Number of Channels	-
Channel Size (WxH)	-
Net Weight	0.2 kg or 0.44 lbs



39870050

Specifications

Color	Black/Yellow
Material	SBR/NBR Solid Rubber
Overall Size (LxWxH)	31.50" x 17.72" x 1.97" or 800 x 450 x 50mm
Axle Load Max	9t
Integrated Connector	Yes
Number of Channels	5
Channel Size (WxH)	(5x) 1.38" x 1.38" or 35 x 35mm
Net Weight	15 kg or 33.07 lbs



39870051

Specifications

Color	Black/Yellow
Material	SBR/NBR Solid Rubber
Overall Size (WxH)	30° Curve x 17.72" x 1.97" or 450 x 50mm
Axle Load Max	9t
Integrated Connector	Yes
Number of Channels	5
Channel Size (WxH)	(5x) 1.38" x 1.38" or 35 x 35mm
Net Weight	4.8 kg or 10.58 lbs



39870052

Specifications

Color	Black
Material	SBR/NBR Solid Rubber
Overall Size (LxWxH)	7.87" x 17.72" x 1.97" or 200 x 450 x 50mm
Axle Load Max	9t
Integrated Connector	No
Number of Channels	5
Channel Size (WxH)	(5x) 1.38" x 1.38" or 35 x 35mm
Net Weight	4.4 kg or 9.70 lbs



39870053

Specifications

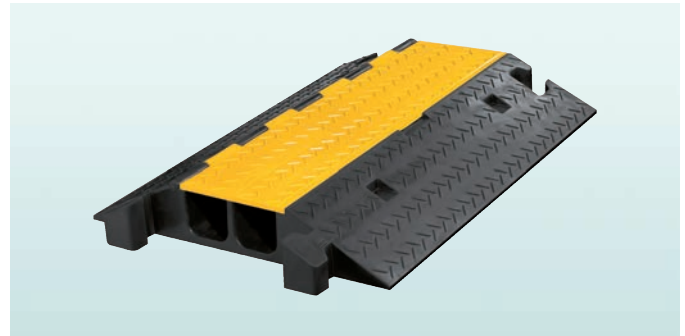
Color	Black
Material	SBR/NBR Solid Rubber
Overall Size (LxWxH)	3.94" x 1.97" x 1.57" or 100 x 50 x 40mm
Axle Load Max	9t
Integrated Connector	-
Number of Channels	-
Channel Size (WxH)	-
Net Weight	0.15 kg or 0.33 lbs



39870080 - Heavy Duty Single Track System

Specifications

Color	Black/Yellow
Material	SBR/NBR Solid Rubber
Overall Size (LxWxH)	31.49" x 23.22" x 4.13" 800 x 590 x 105mm
Axle Load Max	9t
Integrated Connector	Yes
Number of Channels	2
Channel Size (WxH)	(2x) 3.14" x 3.14" or 80 x 80mm
Net Weight	27 kg or 59.52 lbs



39870090 - Light Duty Single Track System

Specifications

Color	Black
Material	SBR/NBR Solid Rubber
Overall Size (LxWxH)	39.40" x 5.12" x 0.79" or 1000 x 130 x 20mm
Axle Load Max	200 kg or 440 lbs
Integrated Connector	Yes
Number of Channels	1
Channel Size (WxH)	(1x) 0.40" x 1.57" or 10 x 40mm
Net Weight	2 kg or 4.41 lbs

