



# **Newhurst ERF Local Liaison Committee Project Update July 2021**

# Newhurst Energy Recovery Facility

	Newhurst
Location	Shepshed, Leicestershire
Capacity (gross)	350 ktpy; ~42 MW
Financial Close	February 11, 2020
Engineer, Procure, Construct (EPC)	Hitachi Zosen INOVA (HZI)
Operator	Covanta
Scheduled Completion Date	Q2 2023



Design (82% complete) and Procurement & Manufacturing (65% complete) progressing on time

Manufacturing of main components progressing on time, with deliveries of Boiler elements arriving on site

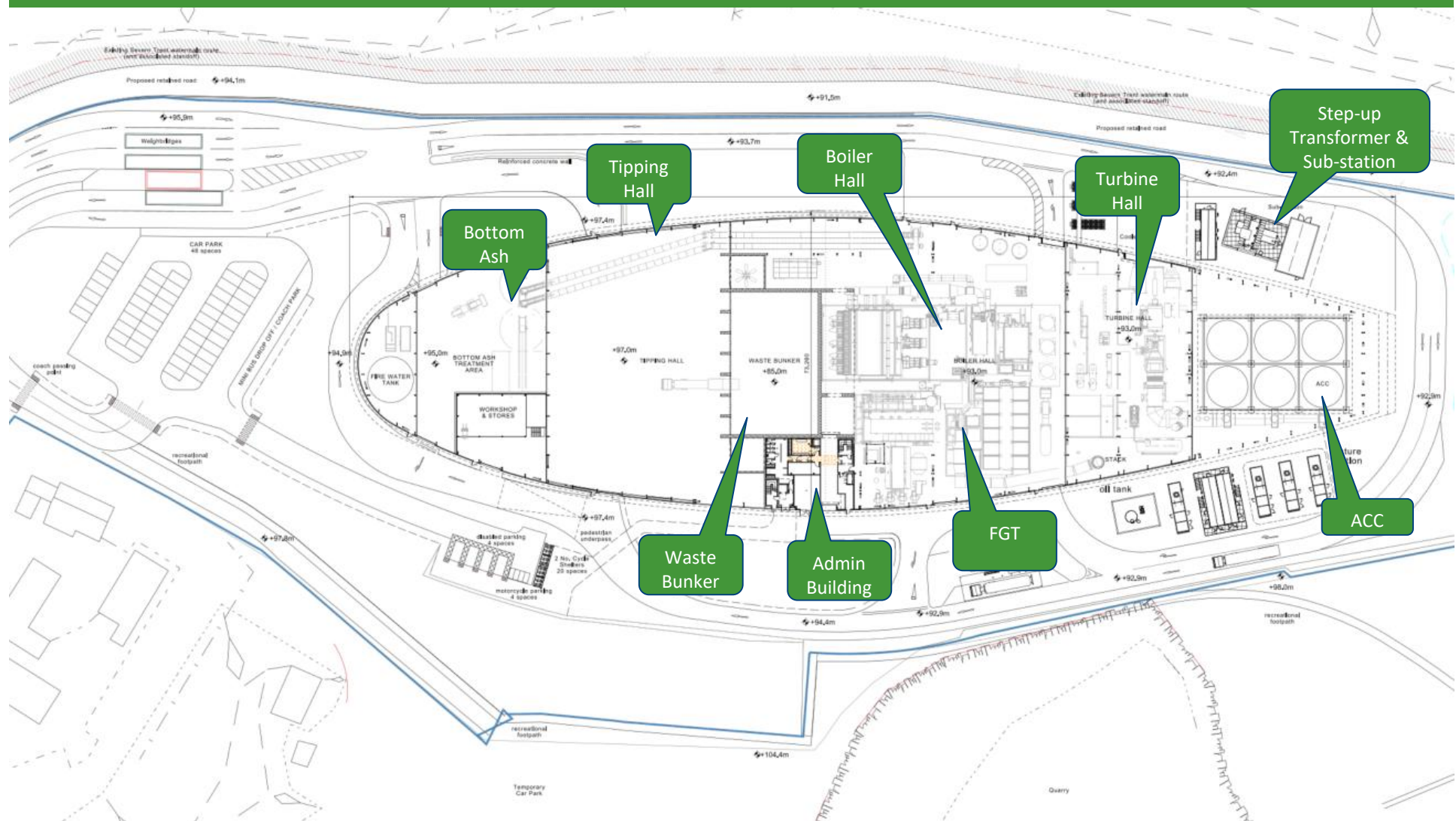
Construction (38% complete) progressing on time

Main Civil Works now complete. Mechanical erection contractors mobilized on site and commenced erection of combustion equipment

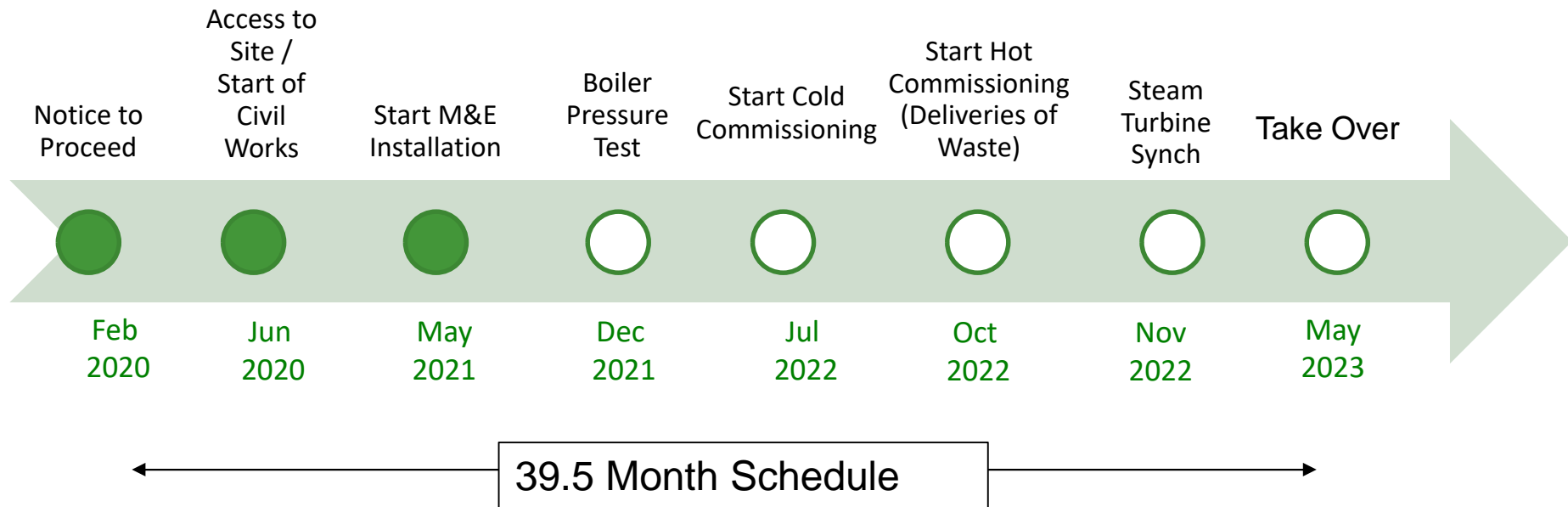
Building steelwork continues and cladding of building envelope commenced

Achieved a score of 41/50 by the Considerate Constructors Scheme ('Excellent' in every category)

# General Arrangement



# Project Timeline



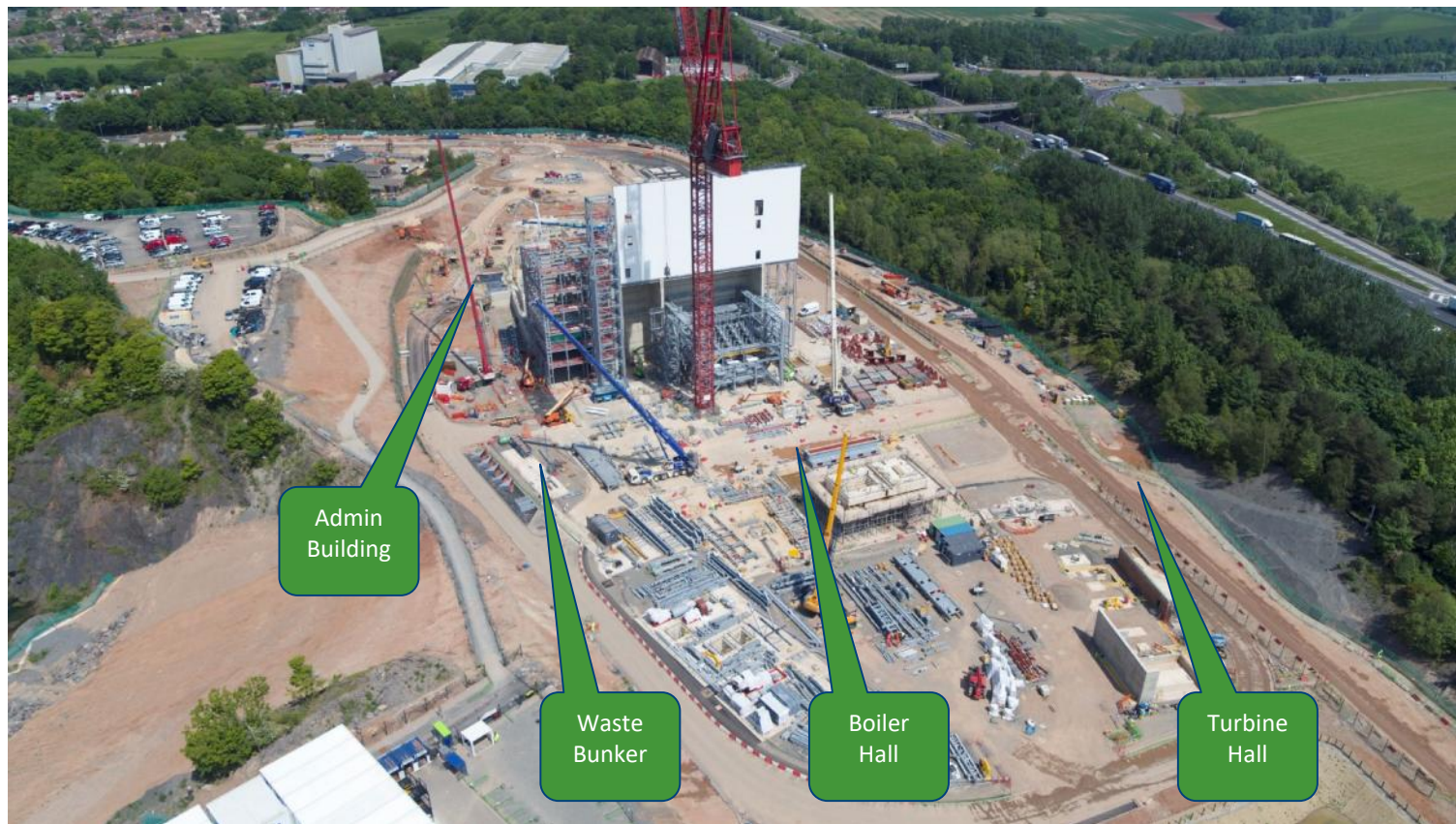


# April 2021



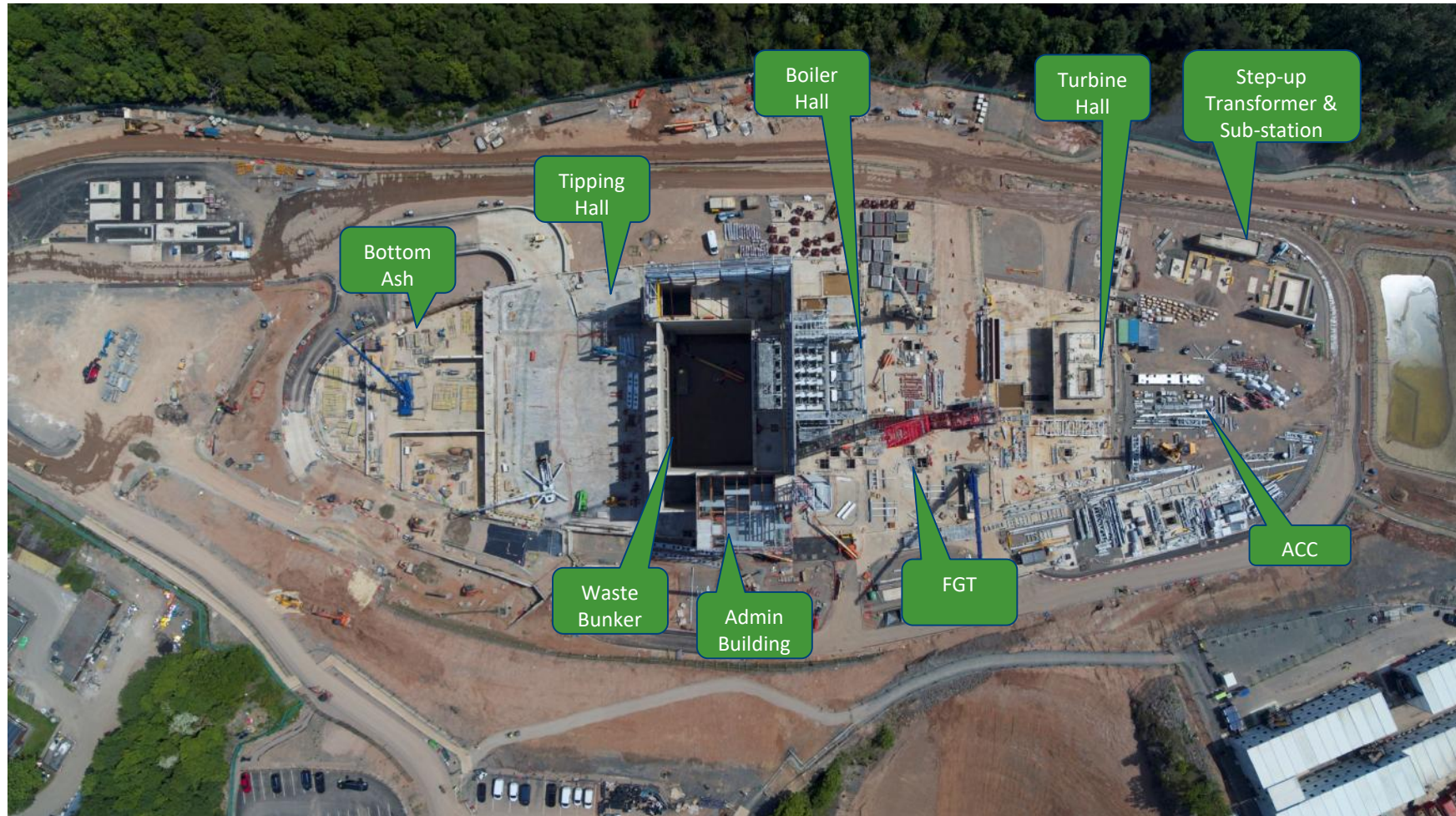


# July 2021





# July 2021





# Progress Photos



View looking north



View looking south-east



Admin Building Steelwork



View looking north-west



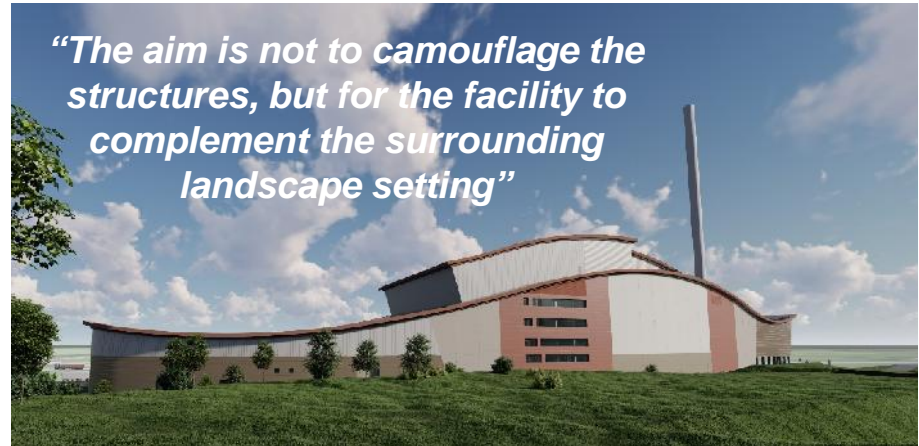
Grate



# What will it look like when it is built?



*“The aim is not to camouflage the structures, but for the facility to complement the surrounding landscape setting”*



*“The building is designed to develop a synergy within the context of undulating land, and rolling topography with its belts of mature woodland and exposed areas of rock and earth”*

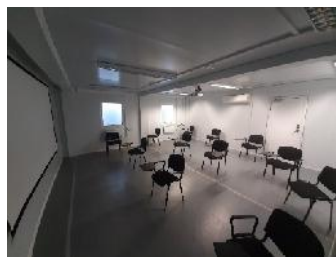
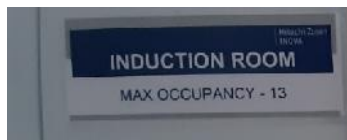


## COVID-19 Management & Action Plan

- All arrangements are in line with current UK Government guidance and Site Operating Procedures published by the Construction Leadership Council
- UK Government position since the start of the pandemic has been that where suitable measures can be implemented, construction sites in England should remain operational.
- The Plan for the Newhurst project includes:
  - All persons arriving at site are subject to temperature screening.
  - Workforce start, finish and break times are staggered to avoid large groups.
  - Site Welfare and Offices have been designed to be large enough to enable social distancing.
  - Additional handwashing facilities and sanitiser.
  - Expanded the site cleaning team to ensure areas are cleaned and disinfected frequently.
  - Masks are being worn when moving around offices.
  - Site support staff working from home where possible.
  - Full-time Medic on site with Covid-testing capability, should it be required.
  - 'Misting' tunnels in operation to disinfect clothing.



# COVID-19 Site Measures



## 3 Month Lookahead

- Erection of the Building Envelope will continue including steelwork and cladding.
- M&E Contractors will continue with installation of the Combustion equipment.
- Delivery of the Waste Cranes expected in July 2021.
- Factory inspections to check on manufacturing progress will continue (remotely due to Covid-restrictions).
- Non-construction related visits will hopefully be able to commence soon – subject to Government and Construction Leaderships Council advice.
- ***Any questions?***