



Newhurst ERF Local Liaison Committee Project Update January 2021

Newhurst Energy Recovery Facility

	Newhurst
Location	Leicestershire, England
Capacity (gross)	350 ktpy; ~42 MW
Financial Close	February 11, 2020
Engineer, Procure, Construct (EPC)	Hitachi Zosen INOVA (HZI)
Operator	Covanta
Scheduled Completion Date	Q2 2023



Main Welfare and Offices established on site

Design (53% complete) and Procurement (28% complete) progressing on time

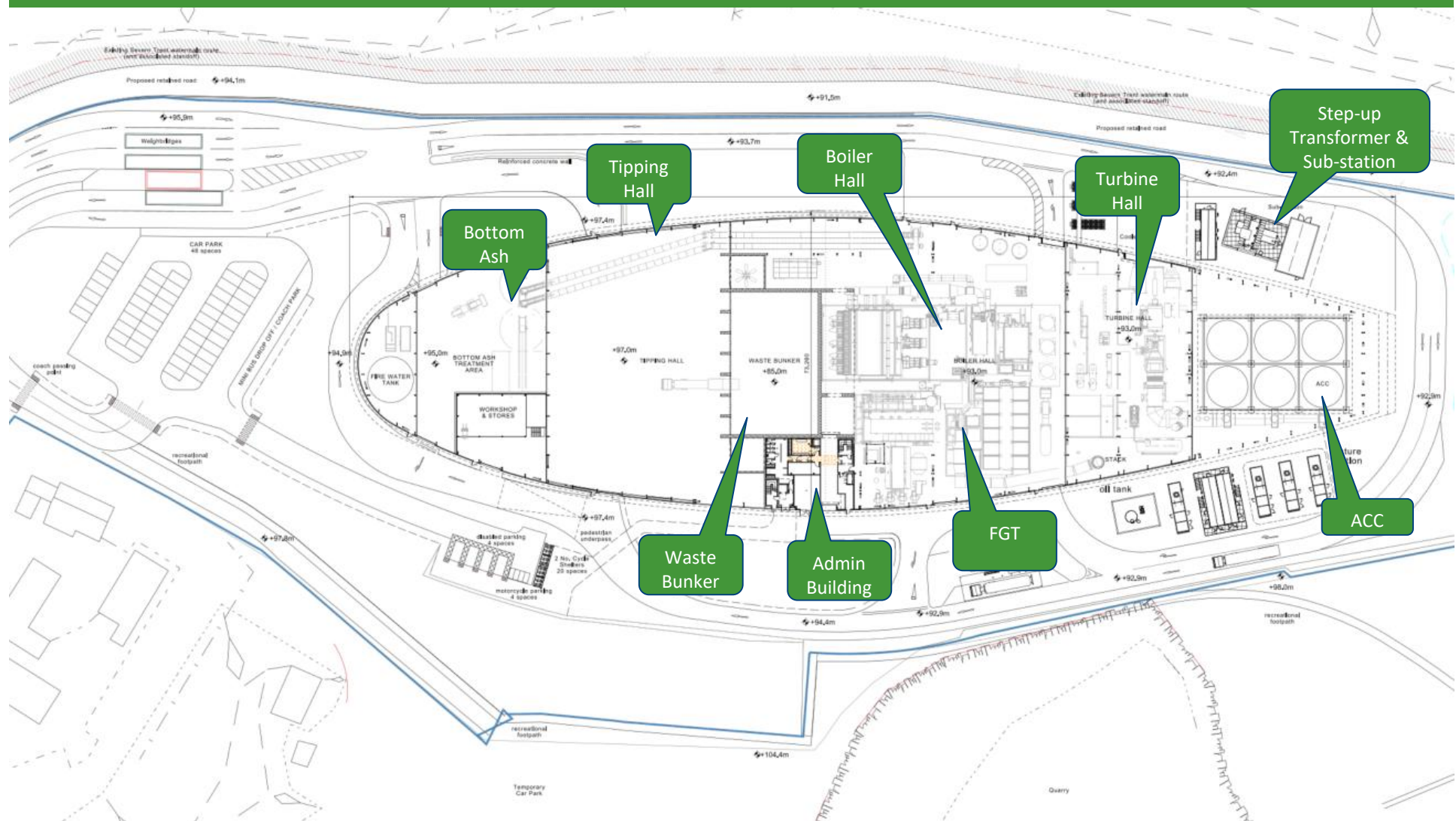
Manufacturing of components, including Turbine and Boiler, progressing well

Road surfacing complete to part of permanent Site Access Road

Construction of Turbine floor slab and Boiler Hall floor slab over 50% complete

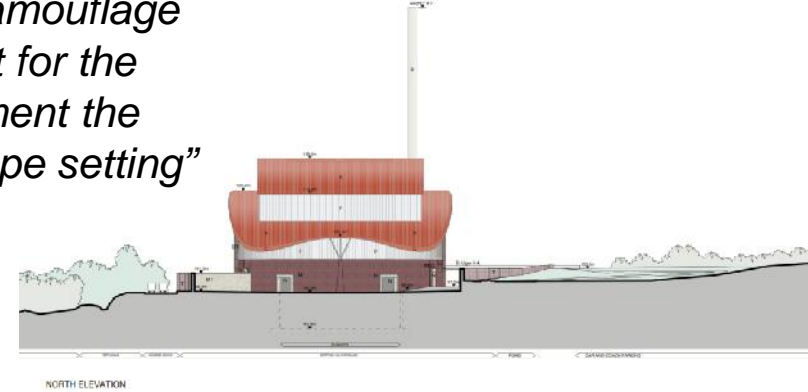
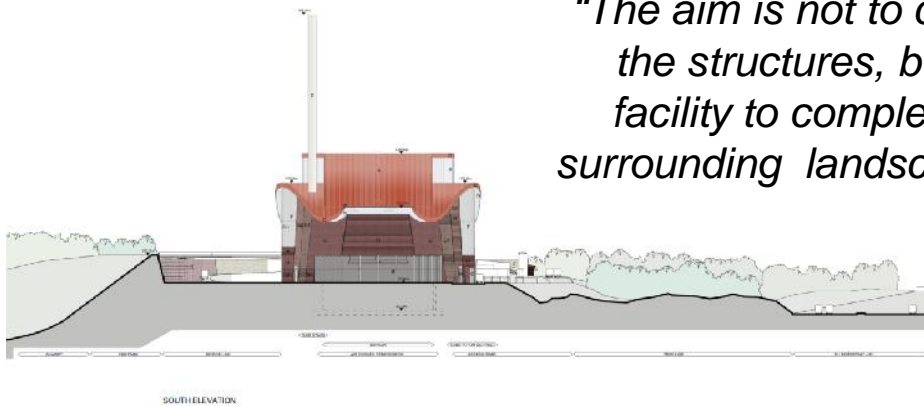
Awarded a score of 40/50 by the Considerate Constructors Scheme ('Excellent' in every category)

General Arrangement

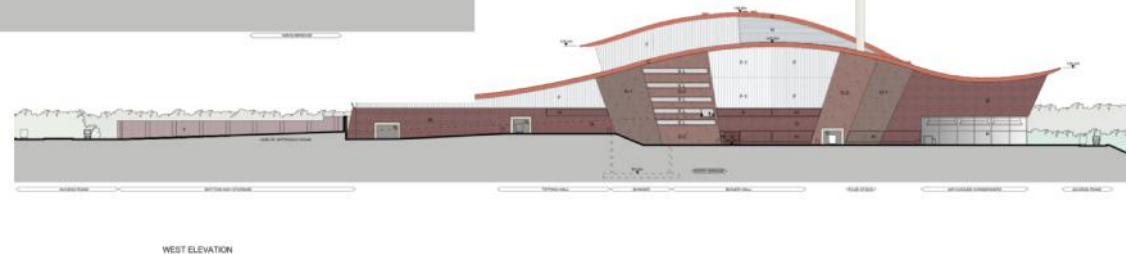
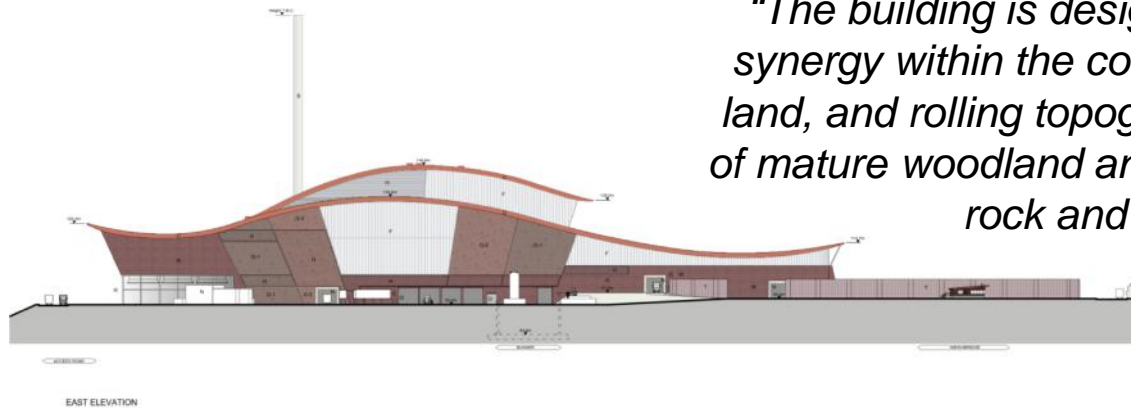


Elevations

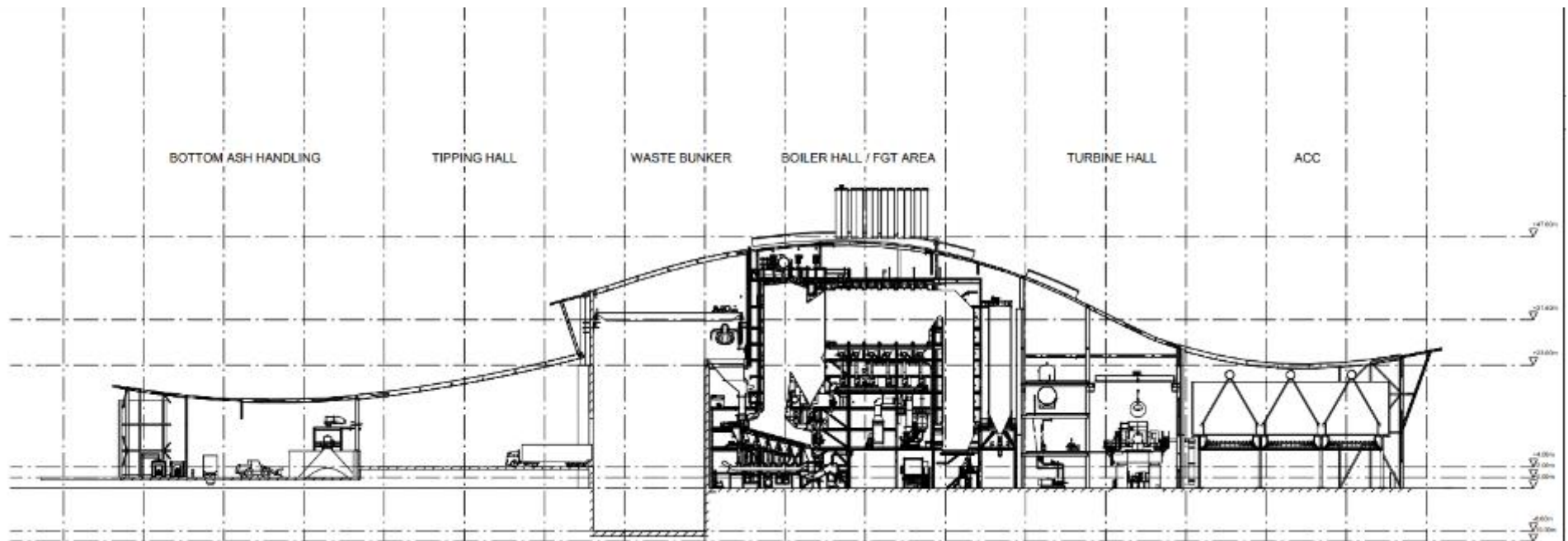
“The aim is not to camouflage the structures, but for the facility to complement the surrounding landscape setting”



“The building is designed to develop a synergy within the context of undulating land, and rolling topography with its belts of mature woodland and exposed areas of rock and earth”

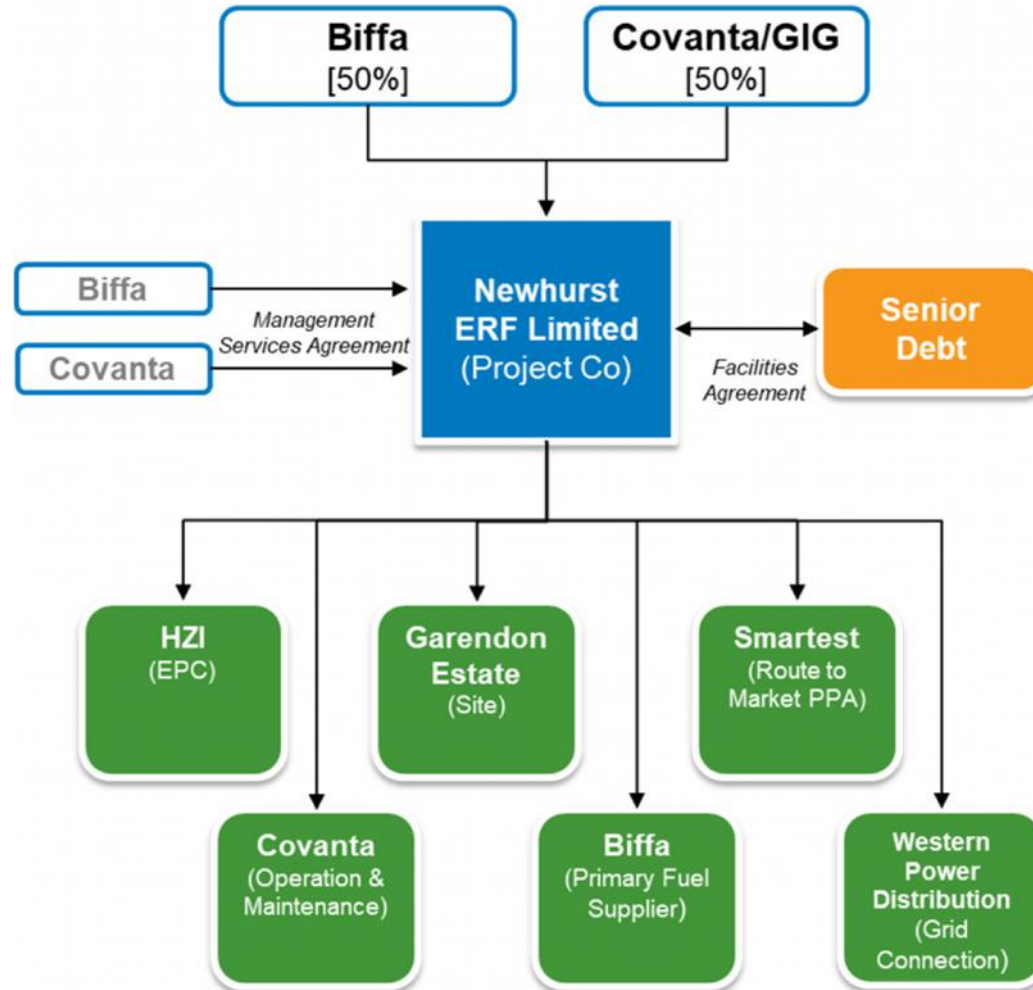


Section

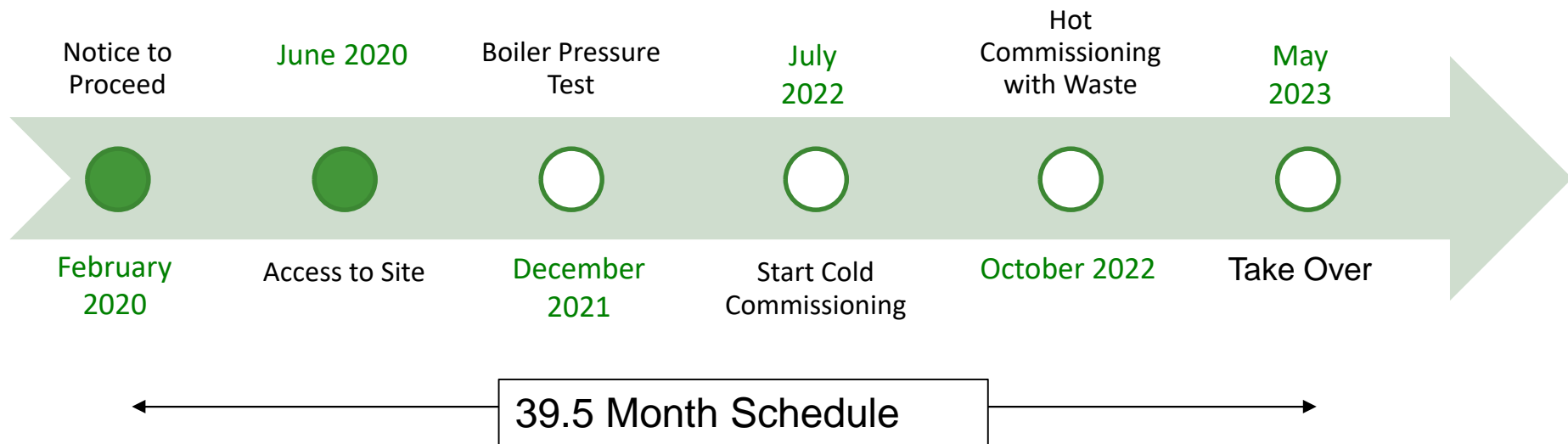


- The overall technical solution and key process technologies are robust and commercially proven
- Moving grate combustion technology

ProjectCo – Newhurst ERF Limited



Project Timeline



October 2020



October 2020



January 2021



January 2021



January 2021



Progress Photos



COVID-19 Management & Action Plan

- All arrangements are in line with current UK Government guidance and Site Operating Procedures published by the Construction Leadership Council
- UK Government position since the start of the pandemic has been that where suitable measures can be implemented, construction sites in England should remain operational.
- The Plan for the Newhurst project includes:
 - All persons arriving at site are subject to temperature screening.
 - Workforce start, finish and break times are staggered to avoid large groups.
 - Site Welfare and Offices have been designed to be large enough to enable social distancing.
 - Additional handwashing facilities and sanitiser.
 - Expanded the site cleaning team to ensure areas are cleaned and disinfected frequently.
 - Masks are being worn when moving around offices.
 - Site support staff working from home where possible.
 - Full-time Medic on site with Covid-testing capability, should it be required.
 - 'Misting' tunnels in operation to disinfect clothing.

COVID-19 Site Measures



3 Month Lookahead

- Complete reinforced concrete works to Boiler Hall, Flue Gas Treatment Hall and Turbine Hall.
- Commence Building Steelwork erection, starting with the Waste Bunker.
- Continue Site Infrastructure works, including earthworks, drainage and roads.
- Factory inspections to check on manufacturing progress (remotely due to Covid-restrictions).