



Newhurst ERF Local Liaison Committee Project Update October 2021

Newhurst Energy Recovery Facility

	Newhurst
Location	Shepshed, Leicestershire
Capacity (gross)	350 ktpy; ~42 MW
Financial Close	February 11, 2020
Engineer, Procure, Construct (EPC)	Hitachi Zosen INOVA (HZI)
Operator	Covanta
Scheduled Completion Date	Q2 2023



Design (93% complete) and Procurement & Manufacturing (87% complete) progressing on time

Manufacturing of main components progressing on time, with deliveries of Boiler, FGT and WSC elements arriving on site

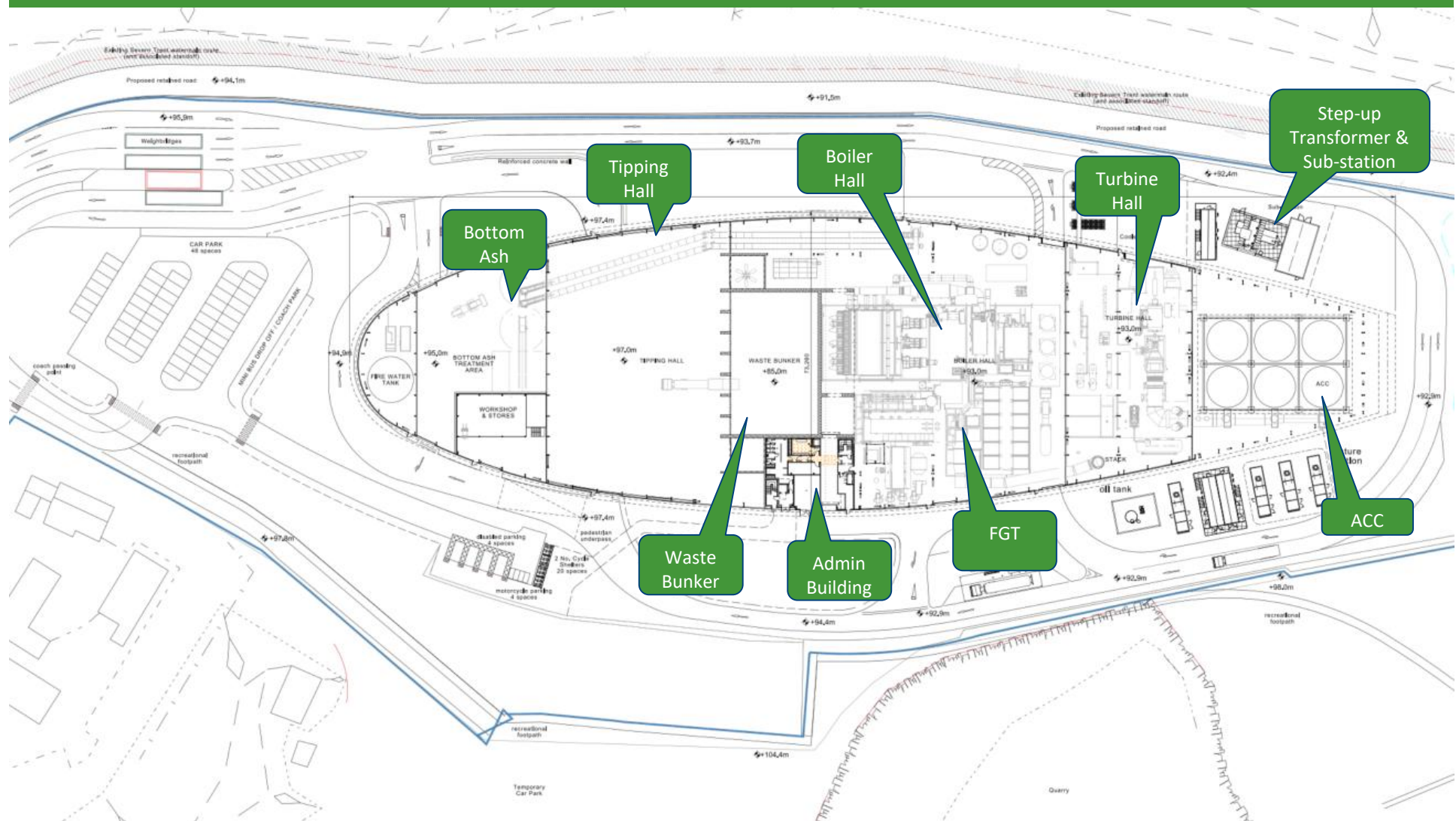
Construction (43% complete) progressing on time

Erection of combustion equipment well progressed, including Grate and Boiler. Waste Cranes have been installed

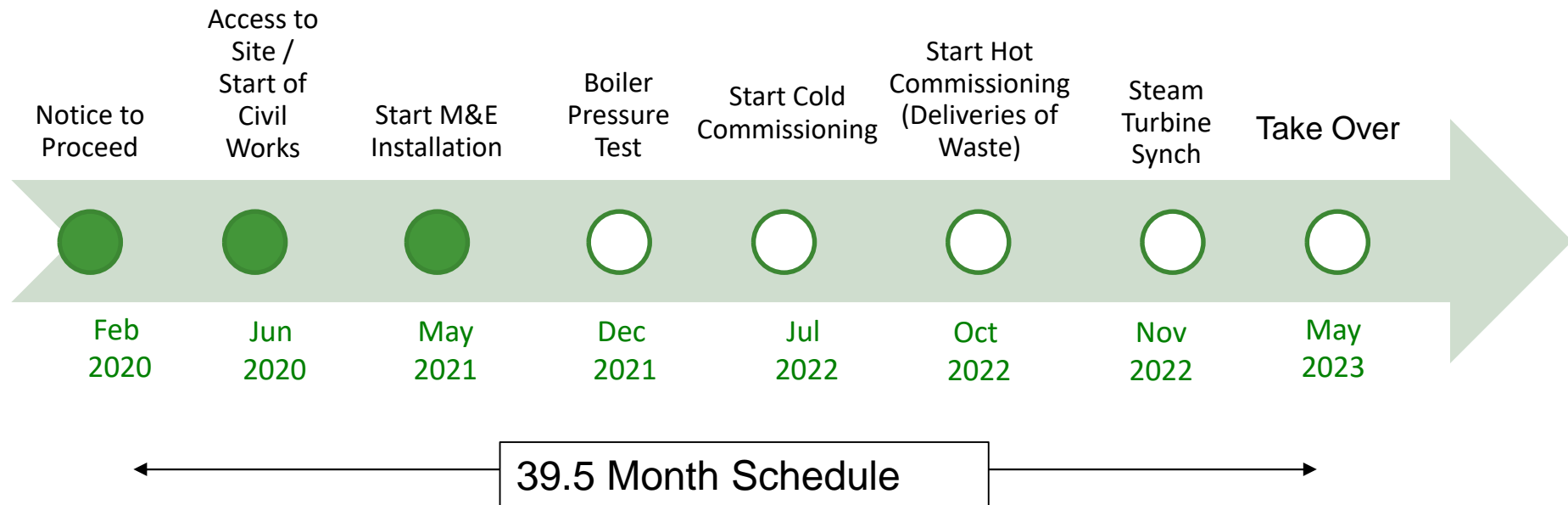
Building steelwork and cladding of building envelope continues

Around 300 operatives currently working on site

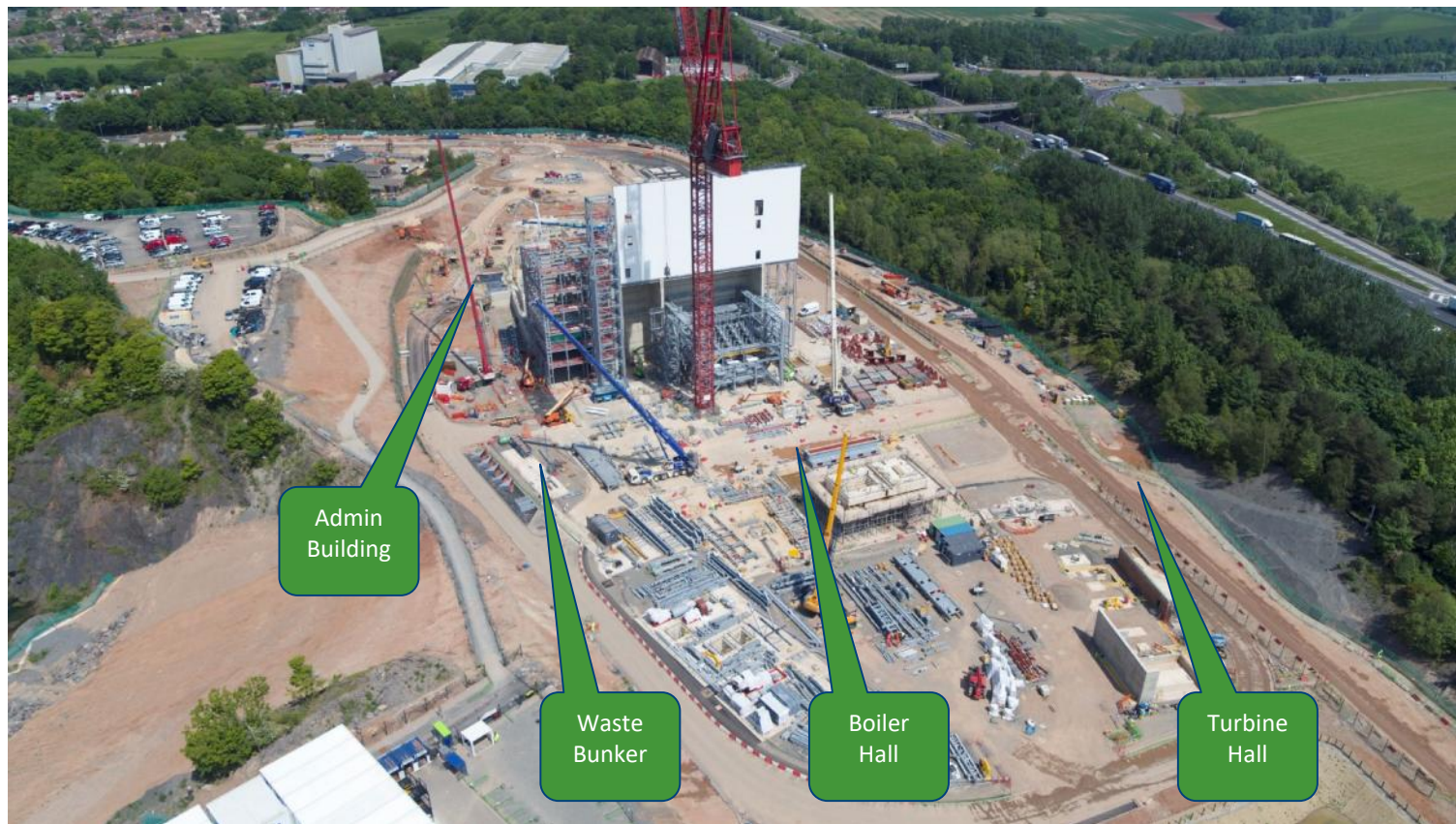
General Arrangement



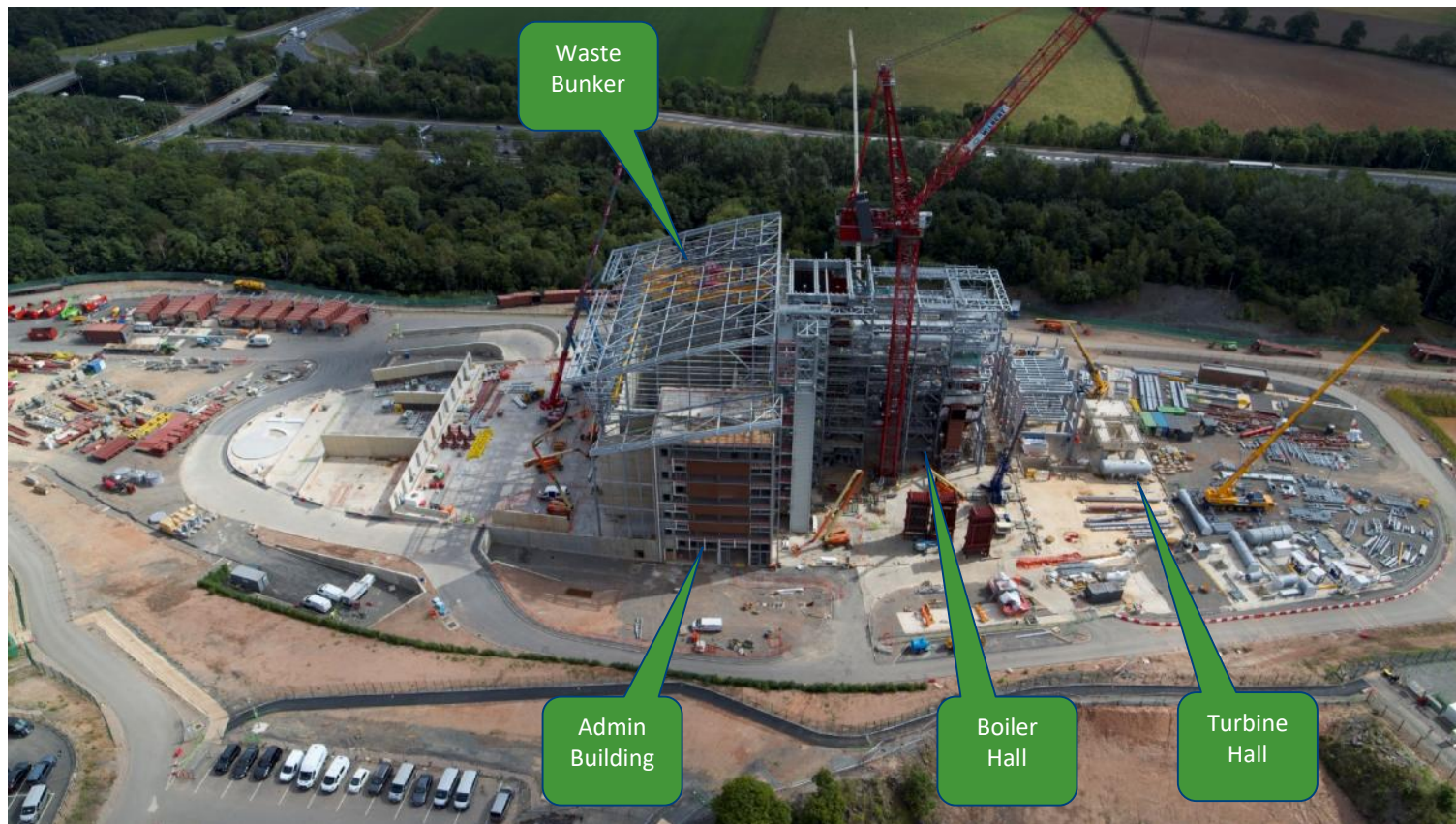
Project Timeline



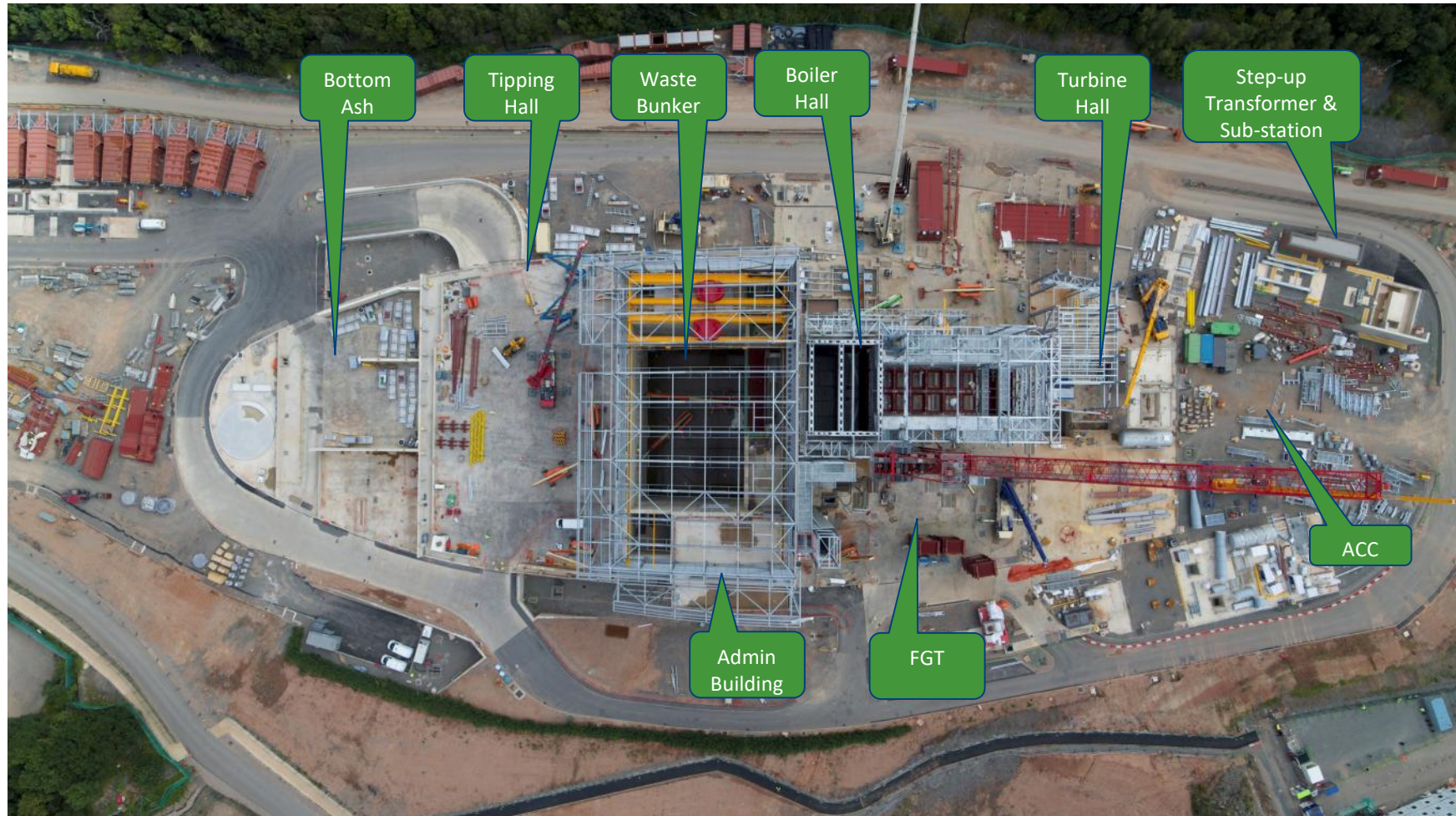
July 2021



October 2021



October 2021



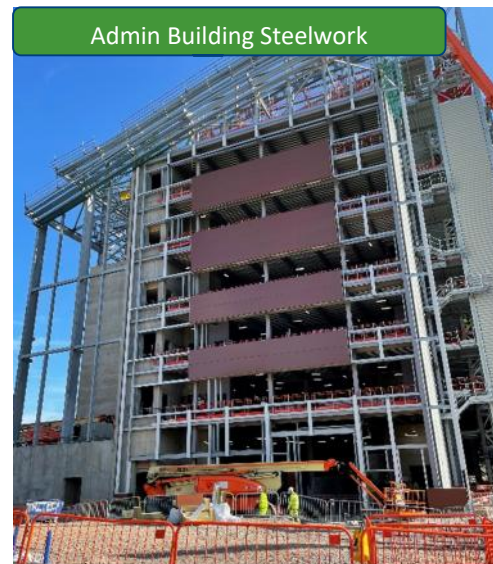
Progress Photos



View looking north



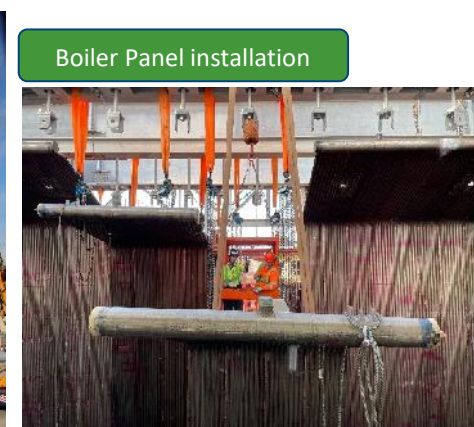
View looking south-east



Admin Building Steelwork



View looking north-west

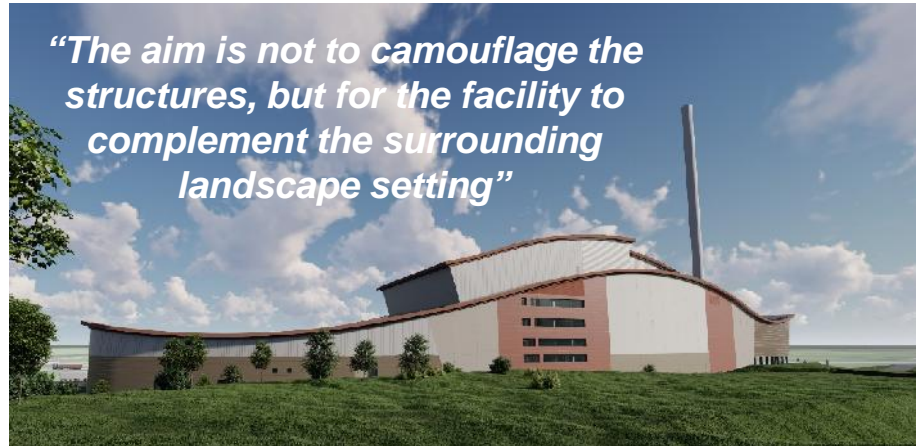


Boiler Panel installation

What will it look like when it is built?



“The aim is not to camouflage the structures, but for the facility to complement the surrounding landscape setting”



“The building is designed to develop a synergy within the context of undulating land, and rolling topography with its belts of mature woodland and exposed areas of rock and earth”



COVID-19 Management & Action Plan

- All arrangements are in line with current UK Government guidance and Site Operating Procedures published by the Construction Leadership Council
- UK Government position since the start of the pandemic has been that where suitable measures can be implemented, construction sites in England should remain operational.
- The Plan for the Newhurst project includes:
 - All persons arriving at site are subject to temperature screening.
 - Workforce start, finish and break times are staggered to avoid large groups.
 - Site Welfare and Offices have been designed to be large enough to enable social distancing.
 - Additional handwashing facilities and sanitiser.
 - Expanded the site cleaning team to ensure areas are cleaned and disinfected frequently.
 - Masks are being worn when moving around offices.
 - Site support staff working from home where possible.
 - Full-time Medic on site with Covid-testing capability, should it be required.
 - 'Misting' tunnels in operation to disinfect clothing.

COVID-19 Site Measures



3 Month Lookahead

- Erection of the Building Envelope will continue including steelwork and cladding.
- M&E Contractors will continue with installation of the Combustion equipment, Flue Gas Treatment and Water Steam Cycle equipment.
- Electrical and Piping subcontractors will mobilise to site.
- Delivery of the Turbine Generator and Stack expected in November 2021.
- Factory inspections to check on manufacturing progress will continue (remotely due to Covid-restrictions).
- Non-construction related visits are now able to be scheduled.
- Newhurst Plant Manager will join the team.
- ***Any questions?***