

Air Quality Review

Delaware County, PA

Air quality trends in your neighborhood

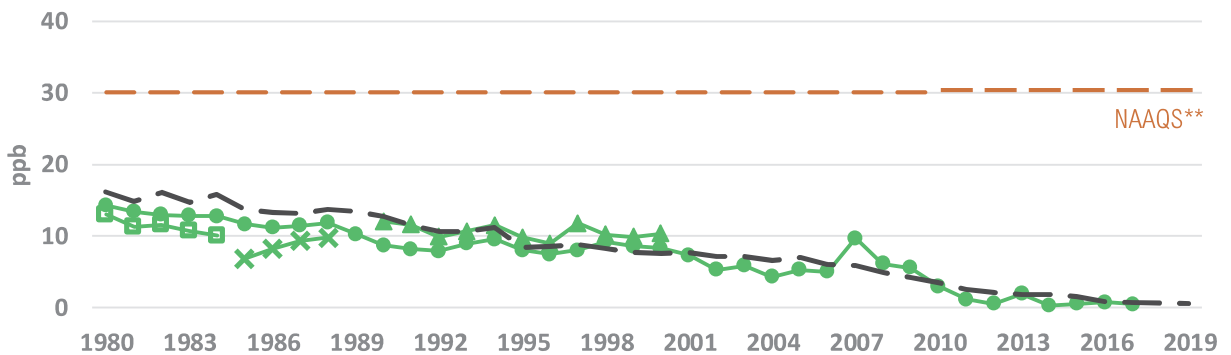
According to the PA DEP, "Since its establishment in 1971, DEP has implemented air pollution control programs to protect the air resources of the Commonwealth that, with a great deal of success, have addressed major public health and welfare air quality concerns."¹ The charts below show local air quality as measured by monitoring stations in the county, alongside the PA State Average and the National Ambient Air Quality Standards set by the U.S. EPA.

Criteria Air Pollutant Trends

— PA State Annual Average* — Air Monitor Data (see map for monitor details)

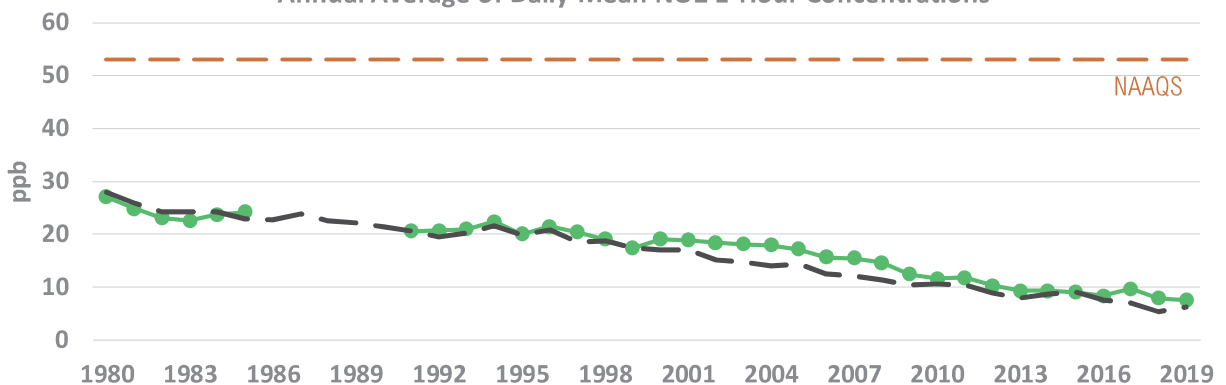
Annual Average of Daily Mean SO₂ 1-Hour Concentrations

Sulfur Dioxide (SO₂)



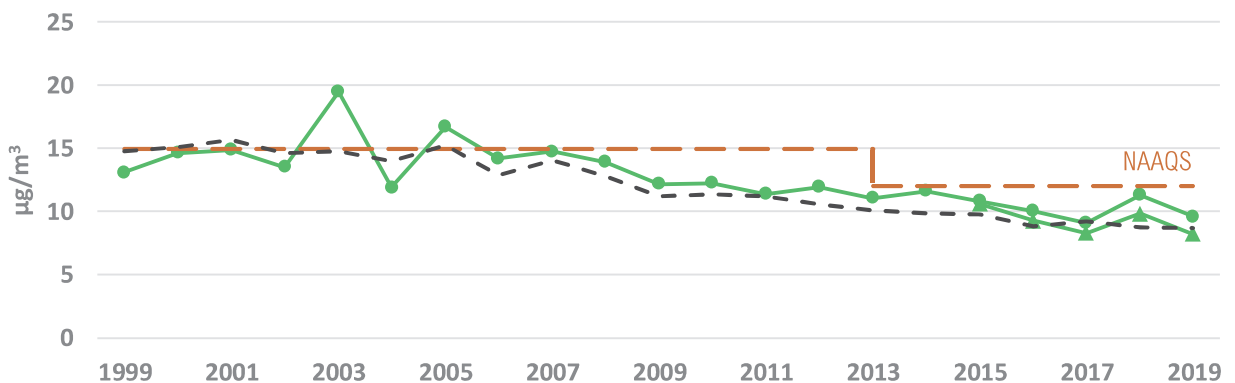
Annual Average of Daily Mean NO₂ 1-Hour Concentrations

Nitrogen Dioxide (NO₂)

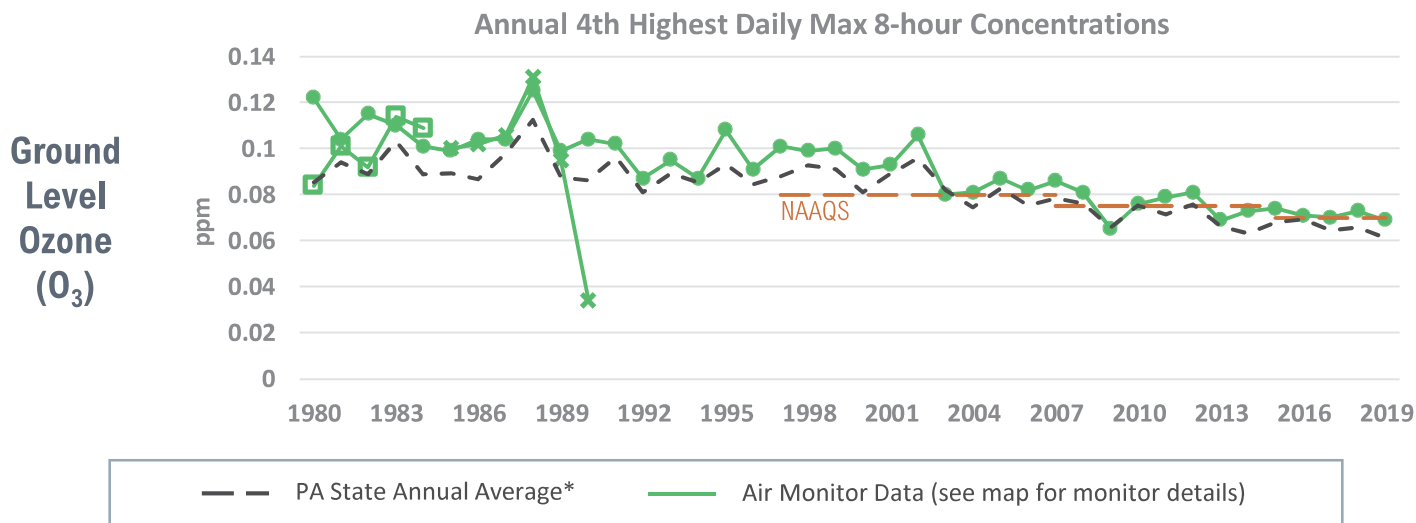


Annual Average of Daily Mean PM_{2.5} Concentrations

Fine Particulate Matter (PM_{2.5})



¹ PA DEP (2019) Annual Ambient Air Monitoring Network Plan. <http://www.depgreenport.state.pa.us/elibrary/GetFolder?FolderID=92775>



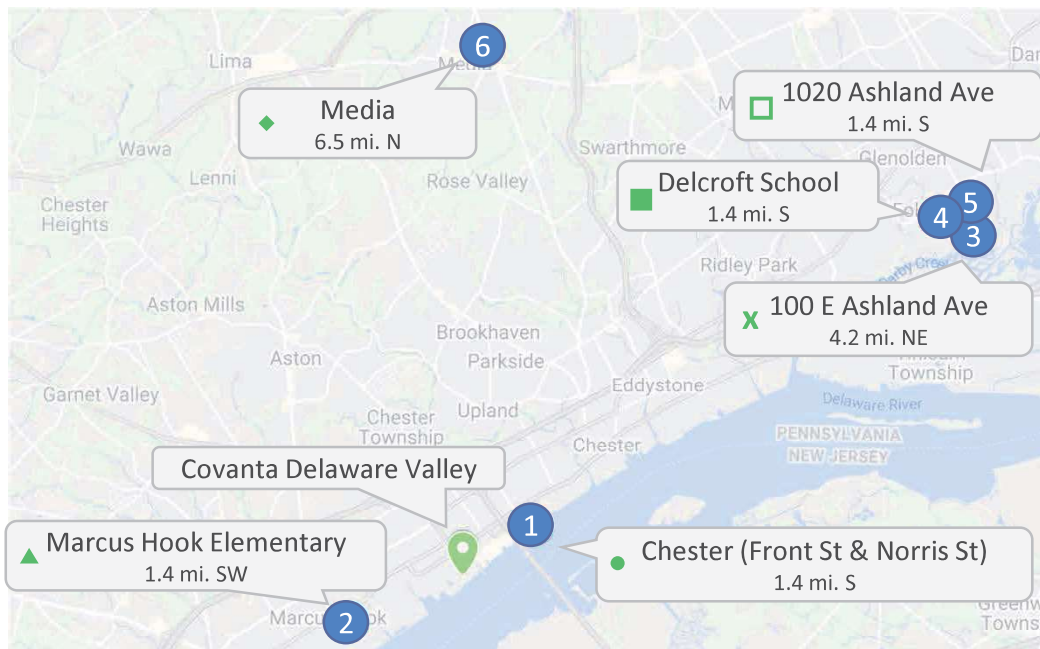
* The annual state average provides a useful comparison to local air quality results. Determination of PA's compliance with standards is evaluated differently, using the State Design Values.

** The 1971 NAAQS standard of 30 ppb (annual arithmetic mean SO₂ concentration), as shown, was replaced in 2010. The new standard is defined as 75 ppb (99th percentile of 1-hour daily maximum). For clarity and consistency, the 1971 NAAQS standard was used.

Data Sources and Background

PA DEP operates and collects data from local air quality monitors across Pennsylvania. These monitors provide information and data on local air quality that the state uses for its air quality forecasts. The data is also used to determine local compliance with the National Ambient Air Quality Standards and to help inform policy decisions. Using the data, we can also look for trends in local air quality. The location of the monitors can change over time, but the objective to measure local air quality remains the same.

Delaware County monitors within 10 miles of the Covanta Delaware Valley facility were used for this assessment and are shown below, along with the distances and directions from the facility.



Data Sources

USEPA Monitor Values Report: <https://www.epa.gov/outdoor-air-quality-data/monitor-values-report>

USEPA Air Data – Concentration Plot: <https://www.epa.gov/outdoor-air-quality-data/air-data-concentration-plot>

PA 2019 Annual Ambient Air Quality Monitoring Network Plan: <http://www.depgreenport.state.pa.us/elibrary/GetFolder?FolderID=92775>