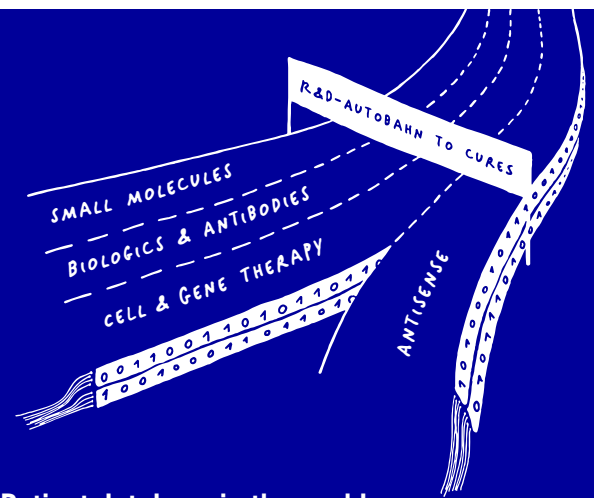


JOIN OUR LONG TERM VISION IN KIDNEY DISEASE



- ▶ One of the most comprehensive molecular Chronic Kidney Patient database in the world
- ▶ Top-level PanOmics platforms for patient-derived targets and biomarkers identification
- ▶ Human iPSC- and innovative assay cascades propel our drug discovery programs
- ▶ Select your preferred modality from our precision medicines:
Small Molecules – Antibodies – Bi-functionals – Cell therapy – Antisense & Gene therapy
- ▶ Existing discovery asset open to partnering and joint progression in CKD

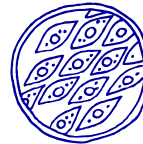
MOLECULAR PATIENT DATABASES

- ▶ Re-defining health and disease
- ▶ Defining molecular disease profiles



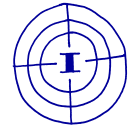
PATIENT (iPSC) – DERIVED DISEASE MODELS

- ▶ Focus on disease relevance throughout the process
- ▶ Screening / HZL / LO ...



MOLECULAR PROFILES TURNED BIOMARKERS

- ▶ More precise measure of efficacy and safety
- ▶ Differentiation from SOC



Genomics – Transcriptomics – Proteomics – Metabolomics
Industrialised data generation

PanOmics
Data generation



Data science – Machine learning / Artificial intelligence – Bioinformatics
Artificial intelligence & Machine Learning driven data analytics

PanHunter
Data analytics



PROJECT(S) DELIVERY

- ▶ Strong Disease expertise
- ▶ Access to all of Evotec's technology platforms

PORTFOLIO PARTNERSHIP

- ▶ Integrated Drug discovery
- ▶ Generating PDCs and IND with a fast turnover

ASSET PARTNERSHIP

- ▶ Oncology
- ▶ Metabolic diseases

- ▶ With more than 600 million Chronic Kidney Disease (CKD) patients worldwide, CKD remains an area of high-unmet medical need and no curative or disease-modifying therapies are currently available. It is a global epidemic, signified through high prevalence and high cost of management. The various natures and complexities of kidney disease etiologies and the slow pace of drug approvals based on New Chemical Entities (NCEs) call for innovative and game-changing approaches to CKD Discovery.
 - ▶ Evotec is at the forefront of kidney research and discovery and aims to address the challenges facing the CKD community. Our capabilities and unique network of alliances and collaborations are boosting development of first-in-class novel therapies for immune-, fibrotic-, monogenic- and diabetic kidney diseases.
-

EVOTEC'S FOOTPRINT IN CHRONIC KIDNEY DISEASE

Alliances & Collaborations

- 2012 Evotec and Harvard University expand strategic alliance in kidney diseases
- 2013 Evotec enters integrated discovery alliance with AstraZeneca in kidney diseases
- 2015 Evotec and Pfizer research collaboration on multi-organ fibrosis
- 2016 Evotec and Bayer partner to develop innovative treatments for kidney diseases
- 2017 Evotec joins NURTuRE Consortium to mine unique kidney patient biobank
- 2017 Evotec joins forces with academic leaders to build NEPLEX and accelerate drug discovery in kidney diseases
- 2019 Evotec and Vifor Pharma form a joint venture for early development in nephrology
- 2020 Evotec and Novo Nordisk form strategic alliance to progress kidney therapies
- 2020 Evotec expands its proprietary patient database into liver disease with unique access to QUOD biobank
- 2021 Evotec and Chinook Therapeutics enter into strategic collaboration to discover and develop novel precision medicines for chronic kidney diseases

Our long-term vision in Kidney Disease:

STARTING WITH THE PATIENT AND ENDING WITH THE PATIENT
