

# Evotec (US) Sample Management – Branford, CT

## FOR FURTHER INFORMATION:

*Business Development*  
303B College Road East  
Princeton, NJ 08540  
+1.732.329.2355 x3308  
info@evotec.com



Sample  
management

## OFFERING

Evotec is uniquely qualified in delivering your Compound and Library management needs through over a decade of being the world's leading Compound Management operation. Evotec expanded its operational presence in 2013 by adding a location in Branford, CT which is strategically positioned to support the strong presence of Evotec's drug discovery collaborators along the East Coast of the United States. Our service offerings include:

- ▶ Cost effective compound identification, selection, and procurement
- ▶ High-throughput compound analysis
- ▶ Multi-format plating and reformatting
- ▶ Inert atmosphere and low temperature storage and processing
- ▶ Fast order fulfillment and worldwide delivery
- ▶ Multi-site disaster recovery and business continuity
- ▶ "In-sourcing" of Evotec compound management staff to client sites

Our compound management experience, primarily from the large pharma and government sector, reinforces that Evotec understands our client's needs and deadlines. Each client has a dedicated Project Manager who provides a single point of contact to insure an open line of communication is always maintained.

## FACILITY EXPANSION

In mid-2018 Evotec expanded its Branford facility footprint with an additional 13,000 square feet of lab and office space. Already housing additional -20°C and ambient storage capacity, the expansion provides several thousand square feet of customizable space to meet future project needs.

Alongside potential storage capacity of greater than 5 million samples, Evotec is now able to custom design secure lab space such as clean lab facilities, analytical chemistry, and biological sample handling environments. The expansion of Evotec's Compound Management facilities is accessed through existing workspace which provides the same high level of sample security and provides easy transfer to existing equipment and workspace.



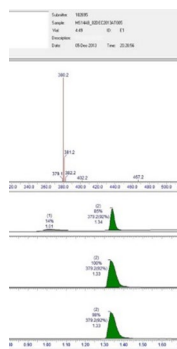
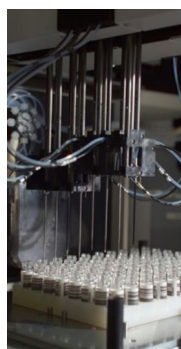
## QUALITY MANAGEMENT

Evotec operates under the ISO9001:2008 Quality Management and internal auditing principles but is not formally ISO9000 certified. We have well-defined and documented procedures to monitor and ensure the consistency of our output. Our process enables us to find defects early in the process and our procedures ensure corrective action is taken whenever a defect occurs, with the goal being to implement corrections with minimal impact to our final deliverables.

## COMPOUND IDENTIFICATION, SELECTION, AND PROCUREMENT

Evotec has extensive experience in the identification, selection, and procurement of sub-collections of compounds possessing very specific (including commercial, physicochemical, or bioactivity-related) properties. Evotec has the capability to apply compound identification tools as required by the client.

Once compounds are identified for purchase, our Project Management group consults with selected suppliers to negotiate terms on behalf of our client requirements, e.g. price, purity, and format. Evotec purchases compounds on a regular basis for a number of clients; therefore, the client can benefit from our vendor relations and volume discounts.



## COMPOUND STORAGE

Evotec has invested in industry leading automated storage systems and supporting informatics. Storage capabilities support vials, tubes, plates and bulk materials -80°C, -20°C, and ambient temperatures, as well as inert atmosphere and controlled humidity environments. Actual storage conditions are dictated by sample type, containers, and length of storage. Automated tube storage systems are equipped with high-speed pickers for fast arraying of tubes to support large plating campaigns and rapid follow up. Evotec can also prepare a Disaster Recovery set of the client's collection for storage at one of our other compound management facilities. This set can be readily accessed and processed for distribution as the client's request.

## COMPOUND DISPENSATION AND REFORMATTING

### DMSO Solutions

Evotec has the capability for automated arraying of large numbers of compounds in DMSO between a large variety of containers suitable for distribution or storage. Our extensive liquid handling resources cover the widest range of possible volumes.

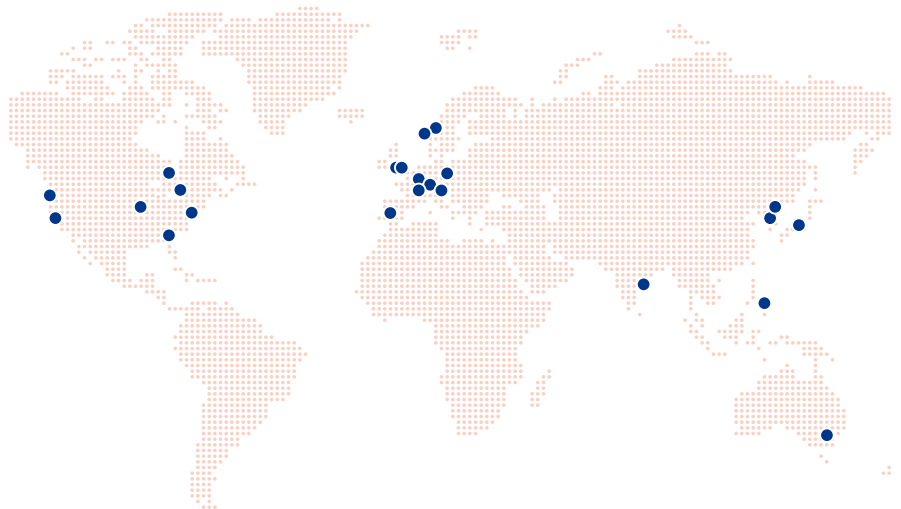
- ▶ High volume end of the range are the eight channel pipettors, Tecan and Hamilton systems, that can dispense and transfer 5 uL to multi-milliliters in vials and plates.
- ▶ Middle of the volume range are the Agilent and Apricot plate that can dispense from 1 uL to 2 mL to and in 96, 384 and 1536 SBS format arrays
- ▶ Low end of the volume range is the LabCyte Echo and the TTP Mosquito that dispenses volumes below 1 uL.

### Neat Compound Dispensation

Evotec has the capability to transfer neat samples via manual weighing, Volatile Solvent Transfer (VST), or Solvent Transfer methods.

### COMPOUND SHIPMENT

Our team has extensive experience in shipping chemicals, research compounds, controlled substances, and reagents. Evotec delivers and receives compounds in all formats, both domestically and overseas (including, but not limited to, North America, Europe and Asia). We are well-versed in documentation requirements, tariff classification, and import/export customs requirements. We have the ability to facilitate the import/export processes through the use of Brokers as required by the Client.



**Experts in Sample Acquisition: 4.2 million samples processed from 223 global suppliers**  
*43.9 million samples delivered to 377 recipients in 18 countries*

### COMPOUND QUALITY CONTROL

Evotec typically uses a three-part incoming Quality Control (QC) process comprised of weight, solubility, and LC-MS purity and identity to ensure that all collections start with high quality compounds. Systems include a Waters LCT Premier XE uPLC systems featuring positive and negative ESI and UV and ELS detection.

### DATA MANAGEMENT

Evotec currently uses the industry leading commercial application (Titian Mosaic) to manage, record, and report all manipulations of client samples. In some situations Evotec also utilizes a proprietary Compound Inventory and Tracking (ComIT) software

MOSAIC Master Work View						
Order Id	Order Type	Description	Next Operation	Barcode	Readiness	Notes Location
15551	From Solution Tubes (By Barcode)	Cherry Pick Dilute		3626001	Ready	2
15552	From Solution Tubes (By Barcode)	Cherry Pick Dilute		3626002	Ready	2
15572	From Solution Tubes (By Barcode)	Cherry Pick Deepath		362708_032	Ready	95
15553	From Solution Tubes (By Barcode)	Cherry Pick Dilute		3626003	Ready	1
15554	From Solution Tubes (By Substance)	Cherry Pick Dilute		3626004	Ready	1
15555	From Solution Tubes (By Substance)	Cherry Pick Dilute		3626005	Ready	1
15573	From Solution Tubes (By Barcode)	Cherry Pick Deepath		362708_035	Ready	1
15556	From Solution Tubes (By Barcode)	Cherry Pick Deepath		3626006	Ready	1
15574	From Solution Tubes (By Barcode)	Cherry Pick Dilute		362708_036	Ready	1
15557	From Solution Tubes (By Barcode)	Cherry Pick Dilute		3626007	Ready	1
15575	From Solution Tubes (By Barcode)	Cherry Pick Deepath		362708_037	Ready	95
15558	From Solution Tubes (By Barcode)	Cherry Pick Dilute		3626008	Ready	1
15576	From Solution Tubes (By Barcode)	Cherry Pick Dilute		362708_038	Ready	95
15559	From Solution Tubes (By Barcode)	Cherry Pick Dilute		3626009	Ready	1
15577	From Solution Tubes (By Barcode)	Cherry Pick Deepath		362708_039	Ready	95
15560	From Solution Tubes (By Barcode)	Cherry Pick Dilute		3626010	Ready	1
15578	From Solution Tubes (By Barcode)	Cherry Pick Deepath		362708_040	Ready	95
15561	From Solution Tubes (By Barcode)	Cherry Pick Dilute		3626011	Ready	1
15562	From Solution Tubes (By Barcode)	Cherry Pick Dilute		3626012	Ready	1
15563	From Solution Tubes (By Substance)	Deepath	End	3626013	Ready	24
15564	From Solution Tubes (By Substance)	Deepath	End	3626014	Ready	1
15565	From Solution Tubes (By Substance)	Deepath	End	3626015	Ready	1
15566	From Solution Tubes (By Substance)	Deepath	End	3626016	Ready	1
15567	From Solution Tubes (By Substance)	Deepath	End	3626017	Ready	1
15568	From Solution Tubes (By Substance)	Deepath	End	3626018	Ready	1
15569	From Solution Tubes (By Substance)	Deepath	End	3626019	Ready	1
15570	From Solution Tubes (By Substance)	Deepath	End	3626020	Ready	1
15571	From Solution Tubes (By Substance)	Deepath	End	3626021	Ready	1
15572	From Solution Tubes (By Substance)	Deepath	End	3626022	Ready	1
15573	From Solution Tubes (By Substance)	Deepath	End	3626023	Ready	1
15574	From Solution Tubes (By Substance)	Deepath	End	3626024	Ready	1
15575	From Solution Tubes (By Substance)	Deepath	End	3626025	Ready	1
15576	From Solution Tubes (By Substance)	Deepath	End	3626026	Ready	1
15577	From Solution Tubes (By Substance)	Deepath	End	3626027	Ready	1
15578	From Solution Tubes (By Substance)	Deepath	End	3626028	Ready	1
15579	From Solution Tubes (By Substance)	Deepath	End	3626029	Ready	1
15580	From Solution Tubes (By Substance)	Deepath	End	3626030	Ready	1
15581	From Solution Tubes (By Substance)	Deepath	End	3626031	Ready	1
15582	From Solution Tubes (By Substance)	Deepath	End	3626032	Ready	1
15583	From Solution Tubes (By Substance)	Deepath	End	3626033	Ready	1
15584	From Solution Tubes (By Substance)	Deepath	End	3626034	Ready	1
15585	From Solution Tubes (By Substance)	Deepath	End	3626035	Ready	1
15586	From Solution Tubes (By Substance)	Deepath	End	3626036	Ready	1
15587	From Solution Tubes (By Substance)	Deepath	End	3626037	Ready	1
15588	From Solution Tubes (By Substance)	Deepath	End	3626038	Ready	1
15589	From Solution Tubes (By Substance)	Deepath	End	3626039	Ready	1
15590	From Solution Tubes (By Substance)	Deepath	End	3626040	Ready	1
15591	From Solution Tubes (By Substance)	Deepath	End	3626041	Ready	1
15592	From Solution Tubes (By Substance)	Deepath	End	3626042	Ready	1
15593	From Solution Tubes (By Substance)	Deepath	End	3626043	Ready	1
15594	From Solution Tubes (By Substance)	Deepath	End	3626044	Ready	1
15595	From Solution Tubes (By Substance)	Deepath	End	3626045	Ready	1
15596	From Solution Tubes (By Substance)	Deepath	End	3626046	Ready	1
15597	From Solution Tubes (By Substance)	Deepath	End	3626047	Ready	1
15598	From Solution Tubes (By Substance)	Deepath	End	3626048	Ready	1
15599	From Solution Tubes (By Substance)	Deepath	End	3626049	Ready	1
15600	From Solution Tubes (By Substance)	Deepath	End	3626050	Ready	1
15601	From Solution Tubes (By Substance)	Deepath	End	3626051	Ready	1
15602	From Solution Tubes (By Substance)	Deepath	End	3626052	Ready	1
15603	From Solution Tubes (By Substance)	Deepath	End	3626053	Ready	1
15604	From Solution Tubes (By Substance)	Deepath	End	3626054	Ready	1
15605	From Solution Tubes (By Substance)	Deepath	End	3626055	Ready	1
15606	From Solution Tubes (By Substance)	Deepath	End	3626056	Ready	1
15607	From Solution Tubes (By Substance)	Deepath	End	3626057	Ready	1
15608	From Solution Tubes (By Substance)	Deepath	End	3626058	Ready	1
15609	From Solution Tubes (By Substance)	Deepath	End	3626059	Ready	1
15610	From Solution Tubes (By Substance)	Deepath	End	3626060	Ready	1
15611	From Solution Tubes (By Substance)	Deepath	End	3626061	Ready	1
15612	From Solution Tubes (By Substance)	Deepath	End	3626062	Ready	1
15613	From Solution Tubes (By Substance)	Deepath	End	3626063	Ready	1
15614	From Solution Tubes (By Substance)	Deepath	End	3626064	Ready	1
15615	From Solution Tubes (By Substance)	Deepath	End	3626065	Ready	1
15616	From Solution Tubes (By Substance)	Deepath	End	3626066	Ready	1
15617	From Solution Tubes (By Substance)	Deepath	End	3626067	Ready	1
15618	From Solution Tubes (By Substance)	Deepath	End	3626068	Ready	1
15619	From Solution Tubes (By Substance)	Deepath	End	3626069	Ready	1
15620	From Solution Tubes (By Substance)	Deepath	End	3626070	Ready	1
15621	From Solution Tubes (By Substance)	Deepath	End	3626071	Ready	1
15622	From Solution Tubes (By Substance)	Deepath	End	3626072	Ready	1
15623	From Solution Tubes (By Substance)	Deepath	End	3626073	Ready	1
15624	From Solution Tubes (By Substance)	Deepath	End	3626074	Ready	1
15625	From Solution Tubes (By Substance)	Deepath	End	3626075	Ready	1
15626	From Solution Tubes (By Substance)	Deepath	End	3626076	Ready	1
15627	From Solution Tubes (By Substance)	Deepath	End	3626077	Ready	1
15628	From Solution Tubes (By Substance)	Deepath	End	3626078	Ready	1
15629	From Solution Tubes (By Substance)	Deepath	End	3626079	Ready	1
15630	From Solution Tubes (By Substance)	Deepath	End	3626080	Ready	1
15631	From Solution Tubes (By Substance)	Deepath	End	3626081	Ready	1
15632	From Solution Tubes (By Substance)	Deepath	End	3626082	Ready	1
15633	From Solution Tubes (By Substance)	Deepath	End	3626083	Ready	1
15634	From Solution Tubes (By Substance)	Deepath	End	3626084	Ready	1
15635	From Solution Tubes (By Substance)	Deepath	End	3626085	Ready	1
15636	From Solution Tubes (By Substance)	Deepath	End	3626086	Ready	1
15637	From Solution Tubes (By Substance)	Deepath	End	3626087	Ready	1
15638	From Solution Tubes (By Substance)	Deepath	End	3626088	Ready	1
15639	From Solution Tubes (By Substance)	Deepath	End	3626089	Ready	1
15640	From Solution Tubes (By Substance)	Deepath	End	3626090	Ready	1
15641	From Solution Tubes (By Substance)	Deepath	End	3626091	Ready	1
15642	From Solution Tubes (By Substance)	Deepath	End	3626092	Ready	1
15643	From Solution Tubes (By Substance)	Deepath	End	3626093	Ready	1
15644	From Solution Tubes (By Substance)	Deepath	End	3626094	Ready	1
15645	From Solution Tubes (By Substance)	Deepath	End	3626095	Ready	1
15646	From Solution Tubes (By Substance)	Deepath	End	3626096	Ready	1
15647	From Solution Tubes (By Substance)	Deepath	End	3626097	Ready	1
15648	From Solution Tubes (By Substance)	Deepath	End	3626098	Ready	1
15649	From Solution Tubes (By Substance)	Deepath	End	3626099	Ready	1
15650	From Solution Tubes (By Substance)	Deepath	End	3626100	Ready	1
15651	From Solution Tubes (By Substance)	Deepath	End	3626101	Ready	1
15652	From Solution Tubes (By Substance)	Deepath	End	3626102	Ready	1
15653	From Solution Tubes (By Substance)	Deepath	End	3626103	Ready	1
15654	From Solution Tubes (By Substance)	Deepath	End	3626104	Ready	1
15655	From Solution Tubes (By Substance)	Deepath	End	3626105	Ready	1
15656	From Solution Tubes (By Substance)	Deepath	End	3626106	Ready	1
15657	From Solution Tubes (By Substance)	Deepath	End	3626107	Ready	1
15658	From Solution Tubes (By Substance)	Deepath	End	3626108	Ready	1
15659	From Solution Tubes (By Substance)	Deepath	End	3626109	Ready	1
15660	From Solution Tubes (By Substance)	Deepath	End	3626110	Ready	1
15661	From Solution Tubes (By Substance)	Deepath	End	3626111	Ready	1
15662	From Solution Tubes (By Substance)	Deepath	End	3626112	Ready	1
15663	From Solution Tubes (By Substance)	Deepath	End	3626113	Ready	1
15664	From Solution Tubes (By Substance)	Deepath	End	3626114	Ready	1
15665	From Solution Tubes (By Substance)	Deepath	End	3626115	Ready	1
15666	From Solution Tubes (By Substance)	Deepath	End	3626116	Ready	1
15667	From Solution Tubes (By Substance)	Deepath	End	3626117	Ready	1
15668	From Solution Tubes (By Substance)	Deepath	End	3626118	Ready	1
15669	From Solution Tubes (By Substance)	Deepath	End	3626119	Ready	1
15670	From Solution Tubes (By Substance)	Deepath	End	3626120	Ready	1
15671	From Solution Tubes (By Substance)	Deepath	End	3626121	Ready	1
15672	From Solution Tubes (By Substance)	Deepath	End	3626122	Ready	1
15673	From Solution Tubes (By Substance)	Deepath	End	3626123	Ready	1
15674	From Solution Tubes (By Substance)	Deepath	End	3626124	Ready	1
15675	From Solution Tubes (By Substance)	Deepath	End	3626125	Ready	1
15676	From Solution Tubes (By Substance)	Deepath	End	3626126	Ready	1
15677	From Solution Tubes (By Substance)	Deepath	End	3626127	Ready	1
15678	From Solution Tubes (By Substance)	Deepath	End	3626128	Ready	1
15679	From Solution Tubes (By Substance)	Deepath	End	3626129	Ready	1
15680	From Solution Tubes (By Substance)	Deepath	End	3626130	Ready	1
15681	From Solution Tubes (By Substance)	Deepath	End	3626131	Ready	1
15682	From Solution Tubes (By Substance)	Deepath	End	3626132	Ready	1
15683	From Solution Tubes (By Substance)	Deepath	End	3626133	Ready	1
15684	From Solution Tubes (By Substance)	Deepath	End	3626134	Ready	1
15685	From Solution Tubes (By Substance)	Deepath	End	3626135	Ready	1
15686	From Solution Tubes (By Substance)	Deepath	End	3626136	Ready	1
15687	From Solution Tubes (By Substance)	Deepath	End	3626137	Ready	1
15688	From Solution Tubes (By Substance)	Deepath	End	3626138	Ready	1
15689	From Solution Tubes (By Substance)	Deepath	End	3626139	Ready	1
15690	From Solution Tubes (By Substance)	Deepath	End	3626140	Ready	1
15691	From Solution Tubes (By Substance)	Deepath	End	3626141	Ready	1
15692	From Solution Tubes (By Substance)	Deepath	End	3626142	Ready	1
15693	From Solution Tubes (By Substance)	Deepath	End	3626143	Ready	1
15694	From Solution Tubes (By Substance)	Deepath	End	3626144	Ready	1
15695	From Solution Tubes (By Substance)	Deepath	End	3626145	Ready	1
15696	From Solution Tubes (By Substance)	Deepath	End	3626146	Ready	1
15697	From Solution Tubes (By Substance)	Deepath	End	3626147	Ready	1
15698	From Solution Tubes (By Substance)	Deepath	End	3626148	Ready	1
15699	From Solution Tubes (By Substance)	Deepath	End	3626149	Ready	1
15700	From Solution Tubes (By Substance)	Deepath	End	3626150	Ready	1
15701	From Solution Tubes (By Substance)	Deepath	End	3626151	Ready	1
15702	From Solution Tubes (By Substance)	Deepath	End	362615		

system for select clients. These systems operate independent of each other but both deliver end-to-end functionality and traceability.

Evotec interacts with client LIMS through WebServices, or Titian's Mosaic Connector. This allows for seamless order placement and real-time inventory visibility. In cases where a complex LIMS is not in operation, Evotec also provides a web-based ordering and inventory portal.

In support of our disaster recovery and business continuity plans Evotec employs i365 Data Back-up and Recovery Solution to store incremental backups on a nightly basis and full server backups on a weekly basis. Data are transferred to two offsite locations automatically. All data transmissions are encrypted and password protected at all times for security and confidentiality.

---

### **IN-SOURCING AND CONSULTING SERVICES**

If a prospective client decides to retain compound management services within their operation then Evotec also offers both in-sourcing and/or consulting services. In these instances Evotec reviews requirements with our clients and design solutions including need identification, process design, facility layout, process workflow, vendor qualification and selection, and even complete staffing and management of onsite services.

Our in-sourcing program provides scientific staffing specifically designed to give clients the „non-permanent“ workforce needed for anywhere from one year to multiyear partnerships. We hire, train and manage our employees to perform analytical scientific programs at client sites, using their quality systems. This advanced staffing model provides a non-permanent, long-term and cost-effective way to meet compound management staffing needs.

---

### **EVOTEC TRACK RECORD**

- ▶ Built and operate both private and public screening libraries since 2004
- ▶ Largest individual library consists of ~1,800,000 compounds
- ▶ Over 40 client collaborations working to individual specifications
- ▶ Over 44,000,000 samples shipped to 400+ recipients in 50+ countries
- ▶ Experience with 200+ global compound suppliers
- ▶ 5 global compound management sites, with over 120 FTE's

**CASE STUDY:  
LIBRARY DESIGN, ACQUISITION & MANAGEMENT**

- ▶ **Library Design: US/UK Collaboration**
- ▶ **Sourcing: 225,000 compounds sourced from top tier suppliers**
- ▶ **Quality Control: Identity & purity by LC-MS and LAT**
- ▶ **Preparation of working store tubes & long term storage vials**
- ▶ **Data Management & Inventory Management System**
- ▶ **Annual full set plating for acoustic dispensing**
- ▶ **Cherry Picking for hit follow-up & full set plating for acoustic manipulation**
- ▶ **Global shipments to collaborators and alliance members**

Compound Storage	Liquid Handling	Quality Control	Inventory & Data Management	Powder Handling	Compound Procurement & Distribution
Controlled temperature and humidity	Multidrop/ Hydra Bulk dispensing (<25µL)	Waters LC-MS	Proprietary in-house software	Manual weighing	EvoSource Compound database (~23M unique structures)
Inert atmosphere (nitrogen or dry air)	Hamilton/ Tecan Span-8 head (1µL-3mL)	Waters µPLC	Titian Mosaic	Gravitrack/ XL-100 automated weighing	Evotec preferred vendor list
Ambient storage temperature	Agilent Vprep/ Bravo 96/ 384 well head (1µL-250µL)	High Resolution Waters µPLC	Excel/Access/ Oracle managed database solutions	Compound solubilisation	Acceptance criteria regulated
-20°C storage temperature	Labcyte Echo variable volume (<1µL)	214nm, 254nm, ELSD measurements	Dynamic inventory control, barcode driven	Restricted material licensed	Global shipping and receiving
-80°C storage temperature	Manual pipetting or automated solutions	DMSO solubility measurements	Alliance Management personnel		Evotec preferred courier provided
Automated storage & cherry picking	Volatile Solvent Transfer & Evaporation				Custom synthesis
Manual storage	Inert atmosphere (Nitrogen or dry air)				

 Services related to the case study