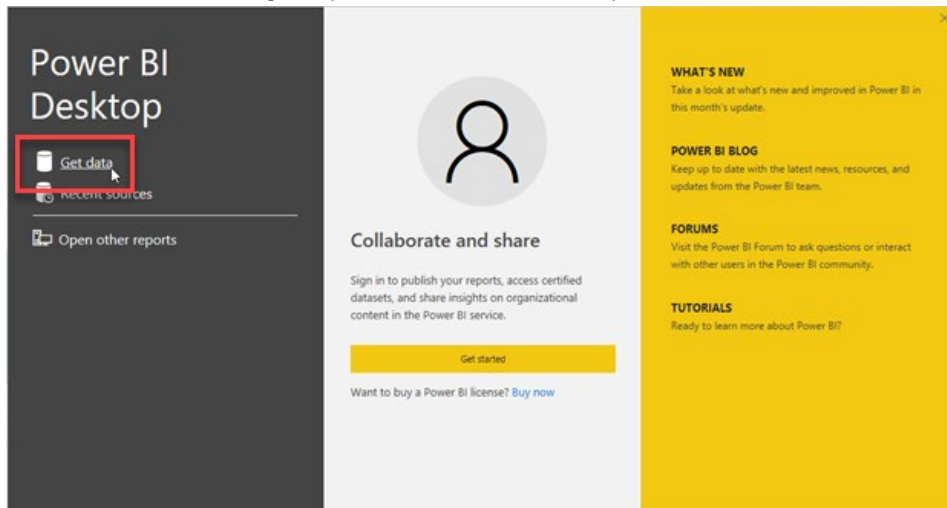
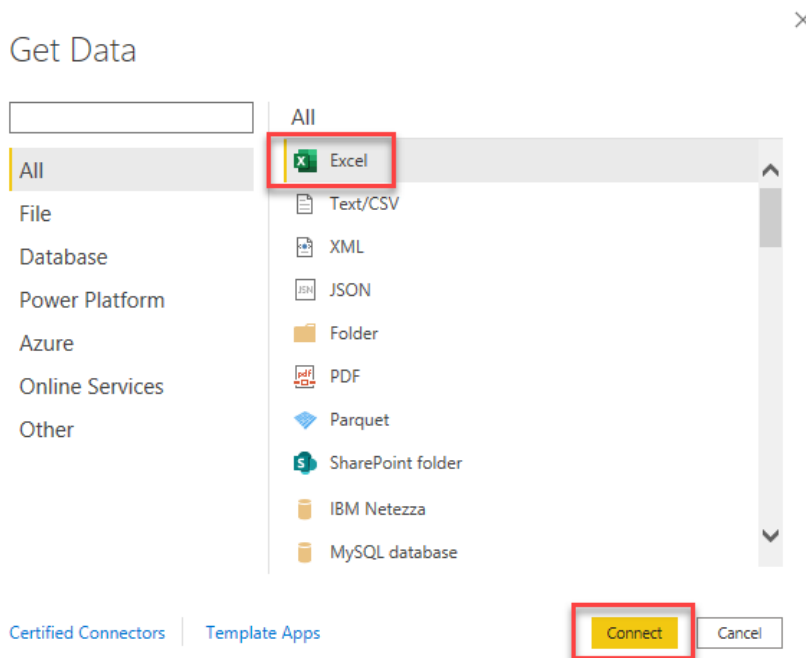


Opening Revit Data on Power BI

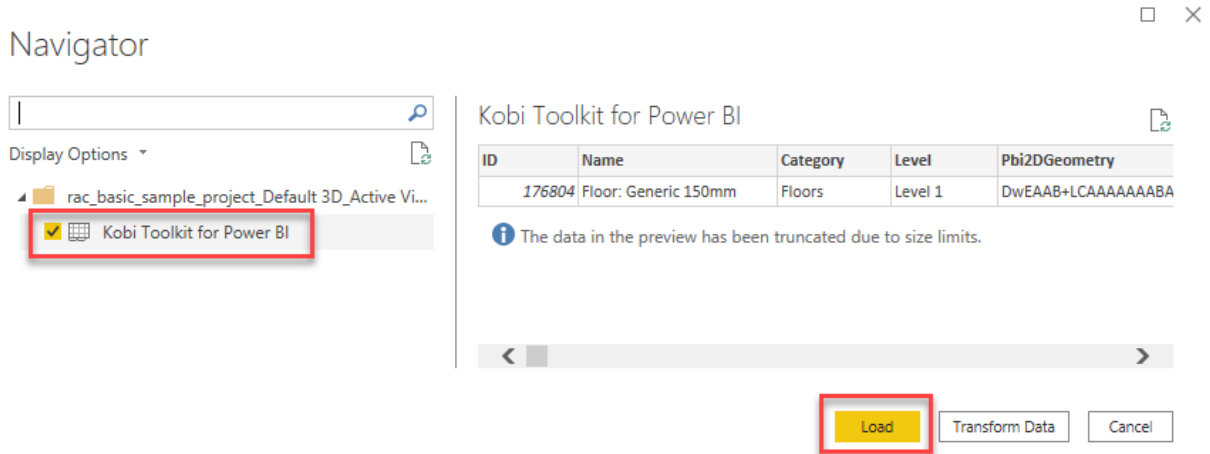
1. **Power BI Desktop:** Open Power BI Desktop and select *Get Data*.



2. **Get Data:** Depending on the exported data type from Revit, select Excel or Text/CSV format and select *Connect*.



3. **Selection:** Now, select the spreadsheet you exported earlier. When the Navigator dialog window opens, select **Kobi Toolkit for Power BI** and select *Load*.



The Navigator dialog window is shown with the following elements:

- Search:** A search bar at the top left.
- Display Options:** A dropdown menu below the search bar.
- Tree View:** A folder structure on the left. The folder 'rac_basic_sample_project_Default 3D_Active Vi...' is expanded, and the item 'Kobi Toolkit for Power BI' is selected and highlighted with a red box.
- Table:** A table titled 'Kobi Toolkit for Power BI' with the following data:

ID	Name	Category	Level	Pbi2DGeometry
176804	Floor: Generic 150mm	Floors	Level 1	DwEAAB+LCAAAAAAABA
- Message:** An information icon followed by the text: 'The data in the preview has been truncated due to size limits.'
- Buttons:** A horizontal bar at the bottom right contains three buttons: 'Load' (highlighted with a red box), 'Transform Data', and 'Cancel'.