



RYMAN HEALTHCARE

# Kevin Hickman Retirement Village

TOWNHOUSE

## UNIT 13/25

STAGE 2  
GROUND FLOOR



3 BED



1.5 BATH



LAUNDRY

INTERIOR	104.22M <sup>2</sup>
GARAGE	21.85M <sup>2</sup>
TOTAL	126.07M <sup>2</sup>

### UNIT SPECIFICATIONS

KITCHEN	LAYOUT 16
BATHROOM	LAYOUT 14A
WC	LAYOUT 1
BEDROOM 1 WR	X2 MARS
BEDROOM 2 WR	VENUS
BEDROOM 3 WR	VENUS
ELECTRICAL TYPE	3A

Path 2.0m away  
See plan O45-002\_SA1-101

Unit 12/25 4.2m away  
See plan O45-002\_SA1-100



← Aluminium  
Sun screen 1.8m high



Path 4.8m away  
See plan O45-002\_SA1-102

1.40  
to path

### LANDSCAPING KEY

Indicative landscaping shown  
Final landscaping to be confirmed

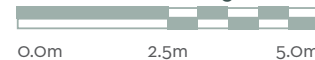
Proposed Exotic Planting

Proposed Grassed Areas

Proposed Lawns

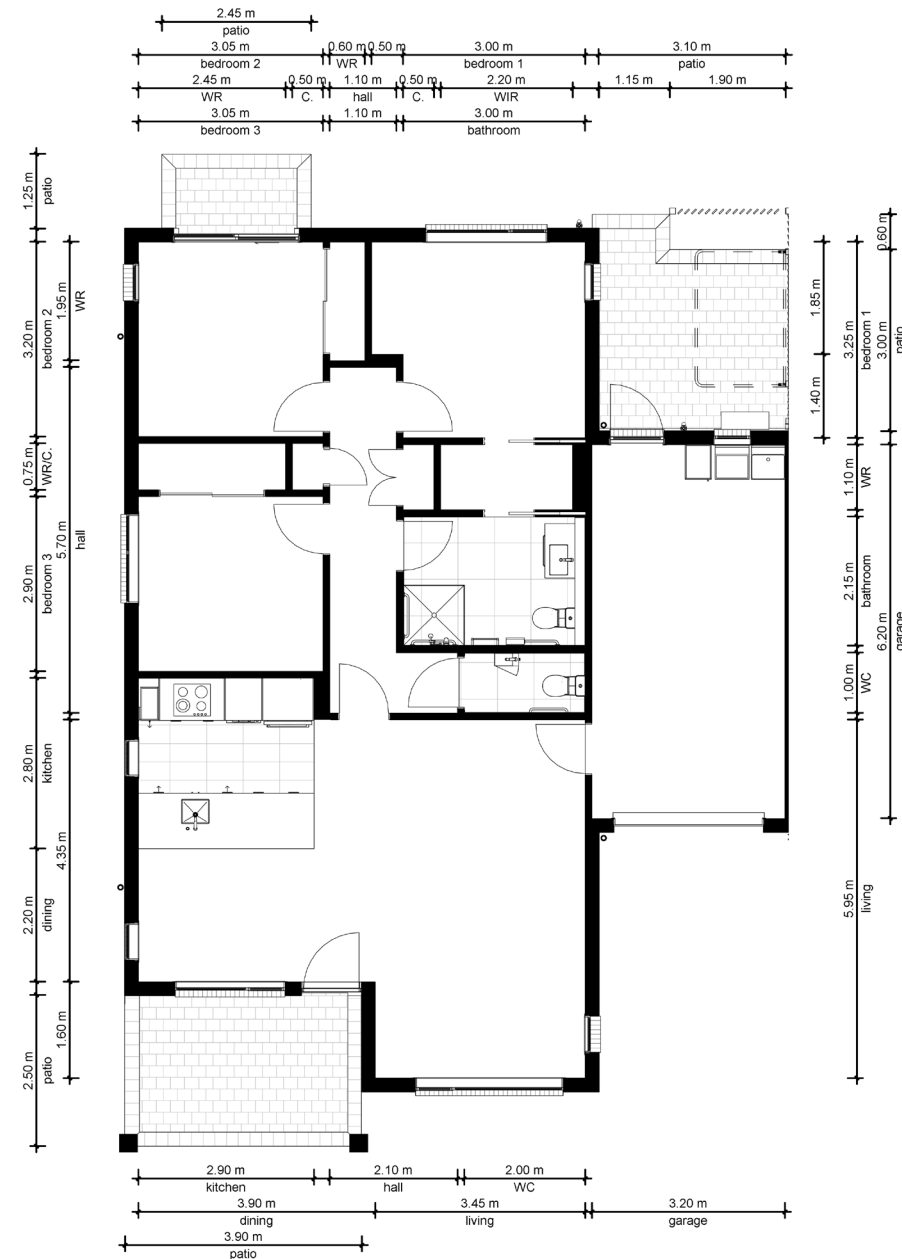
1.8m high aluminium & brick fence  
Private townhouse access with latch

SCALE 1:125



## UNIT SPECIFICATIONS

- Fixed floor coverings (tiles and carpet)
- Light fittings
- Drapes
- Double glazed windows
- Telephone points (in living and all bedrooms)
- Heatpump in living room & heater in bathroom(s)
- Corian benchtop and glass splashback
- Cook top, oven and rangehood (Fisher & Paykel - Stainless steel finish)
- Single draw dishwasher (Fisher & Paykel - Stainless steel finish)
- Bathroom vanity and mirrored cabinet
- Heated towel rail
- Under tile heating in bathroom(s)
- Laundry tub
- Smoke detectors
- Emergency call alarm system in master bedroom and bathroom(s)
- TV (and SKY) compatible aerial point(s) in lounge and bedrooms
- Tiled balcony(s) and or cobbled patios
- Garage door opener (with two remotes)
- Waste Disposal Unit



\*All drawings and dimensions are approximate and may vary slightly due to construction tolerances

\*Dimension plan not to scale