

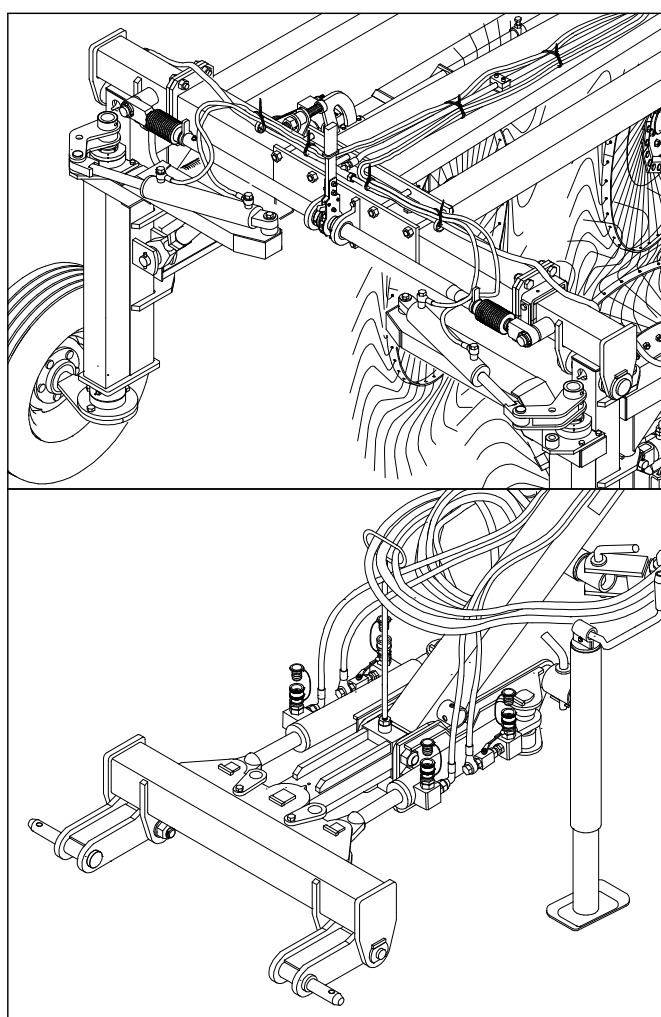


AGRICULTURAL MACHINERY

sitrex®
Spa

SELF-STEERING MECHANISM FOR MX/MK

SPARE PARTS LIST



(This manual shows only the parts which differ from the standard machine. For all other parts, please refer to the standard machine's manuals.)

04-2012

TABLE PART NO 920.326

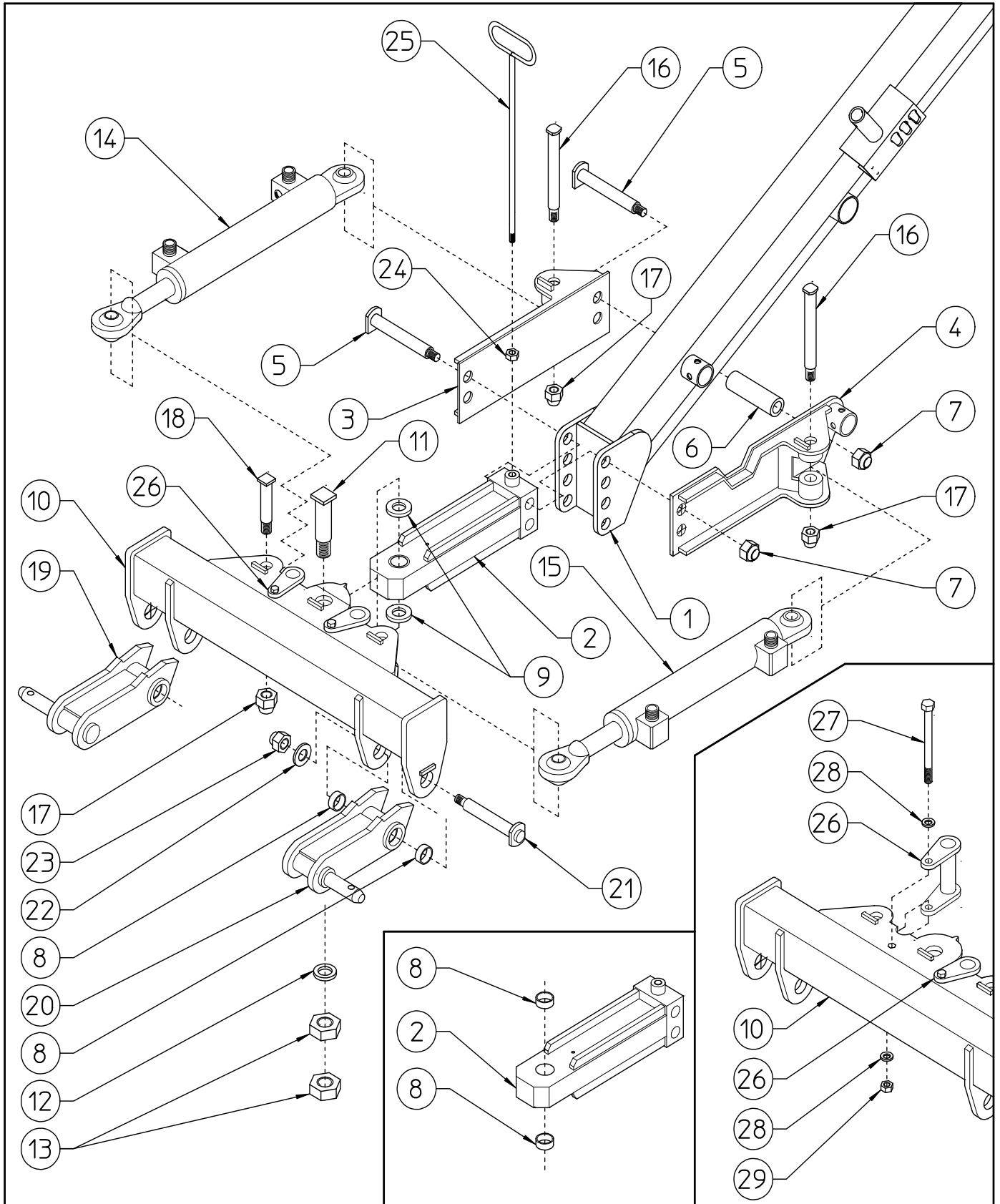


TABLE PART NO 920.326

ITEM	Q.ty	Part no	DESCRIPTION	NOTE
1	1	230.162	*FRONT DRAWBAR	MX
1	1	210.243	*FRONT DRAWBAR	MK
2	1	230.920	DRAWBAR HITCH	
3	1	230.896	RH SUPPORT	
4	1	230.897	LH SUPPORT	
5	4	230.903	PIN	
6	2	230.120	SPACER	
7	4	630.877	NUT M24	
8	6	610.147	BUSH $\varnothing 30/39 \times 20$	
9	2	230.925	SHIM $\varnothing 35,5/60 \times 4$	
10	1	230.921	DRAWBAR	
11	1	230.902	PIN	
12	1	220.208	WASHER $\varnothing 30,5/50 \times 6$	
13	2	610.813	NUT M30 UNI 5589	
14	1	230.898	RH CYLINDER	
15	1	230.899	LH CYLINDER	
16	2	230.904	PIN	
17	4	620.473	NUT M20 UNI 7474	
18	2	230.901	PIN	
19	1	230.922	RH HITCH	
20	1	230.923	LH HITCH	
21	2	230.924	PIN	
22	2	200.165	WASHER $\varnothing 23/50 \times 4$	
23	2	600.079	NUT M22 DIN 980	
24	1	600.032	NUT M16 UNI 5588	
25	1	230.134	HOSE SUPPORT	
26	2	230.900	PIN	
27	2	600.225	SCREW M12x120	
28	4	600.092	WASHER $\varnothing 12-36 \times 2,5$	
29	2	600.077	NUT M12 DIN 980	

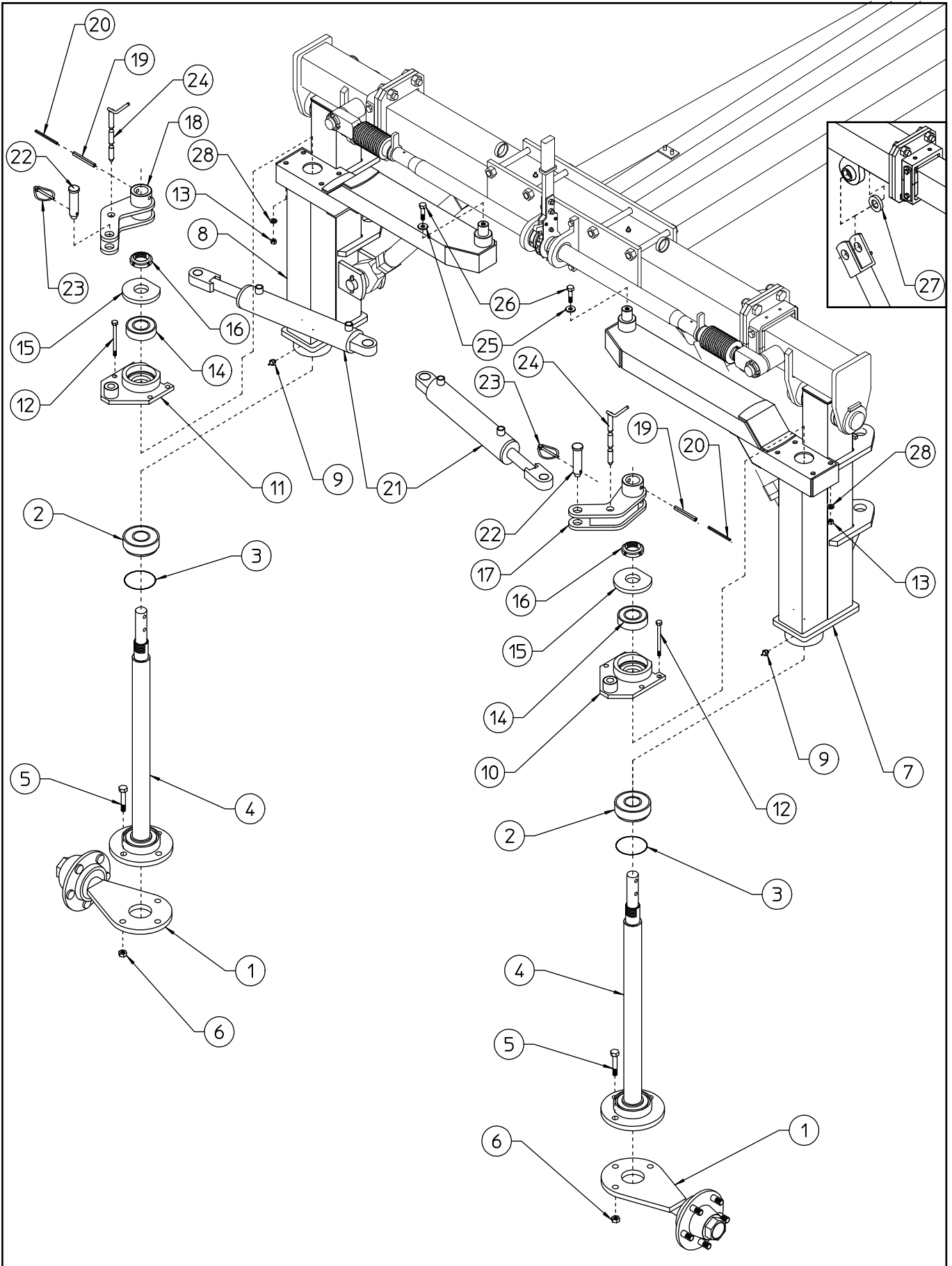


TABLE PART NO 920.239

ITEM	Q.ty	PART NO	DESCRIPTION	NOTE
1	2	230.106	WHEEL SUPPORT	
2	2	620.459	BEARING 32210	
3	2	620.463	GASKET OR 185	
4	2	230.095	SHAFT	MK/10-12-14-16-18-20
4	2	230.154	SHAFT	MX/8-10-12
5	6	600.384	SCREW M16x50	
6	6	600.080	NUT M16	
7	1	230.091	RH SUPPORT	MK/10-12
7	1	230.093	RH SUPPORT	MK/14-16-18-20
7	1	230.139	RH SUPPORT	MX/8-10-12
8	1	230.092	LH SUPPORT	MK/10-12
8	1	230.094	LH SUPPORT	MK/14-16-18-20
8	1	230.140	LH SUPPORT	MX/8-10-12
9	2	600.124	GREASE NIPPLE M6	
10	1	230.102	RH SUPPORT	
11	1	230.103	LH SUPPORT	
12	8	600.152	SCREW M12x90	
13	8	600.077	NUT M12	
14	2	600.827	BEARING 6209 2RS	
15	2	230.101	SHIM	
16	2	620.460	NUT M45x1,5	
17	1	230.097	RH, CONNECTING ROD	
18	1	230.098	LH, CONNECTING ROD	
19	4	600.586	SPRIN PIN \varnothing 10x60	
20	4	600.444	SPRING PIN \varnothing 6x60	
21	2	230.096	CYLINDER	
22	2	230.107	PIN	
23	2	610.466	SPLIT PIN \varnothing 7,5	
24	2	230.108	PIN	
25	2	500.160	WASHER	
26	2	600.770	SCREW M12x20	
27	2	230.161	SHIM	
28	8	600.089	WASHER \varnothing 13	

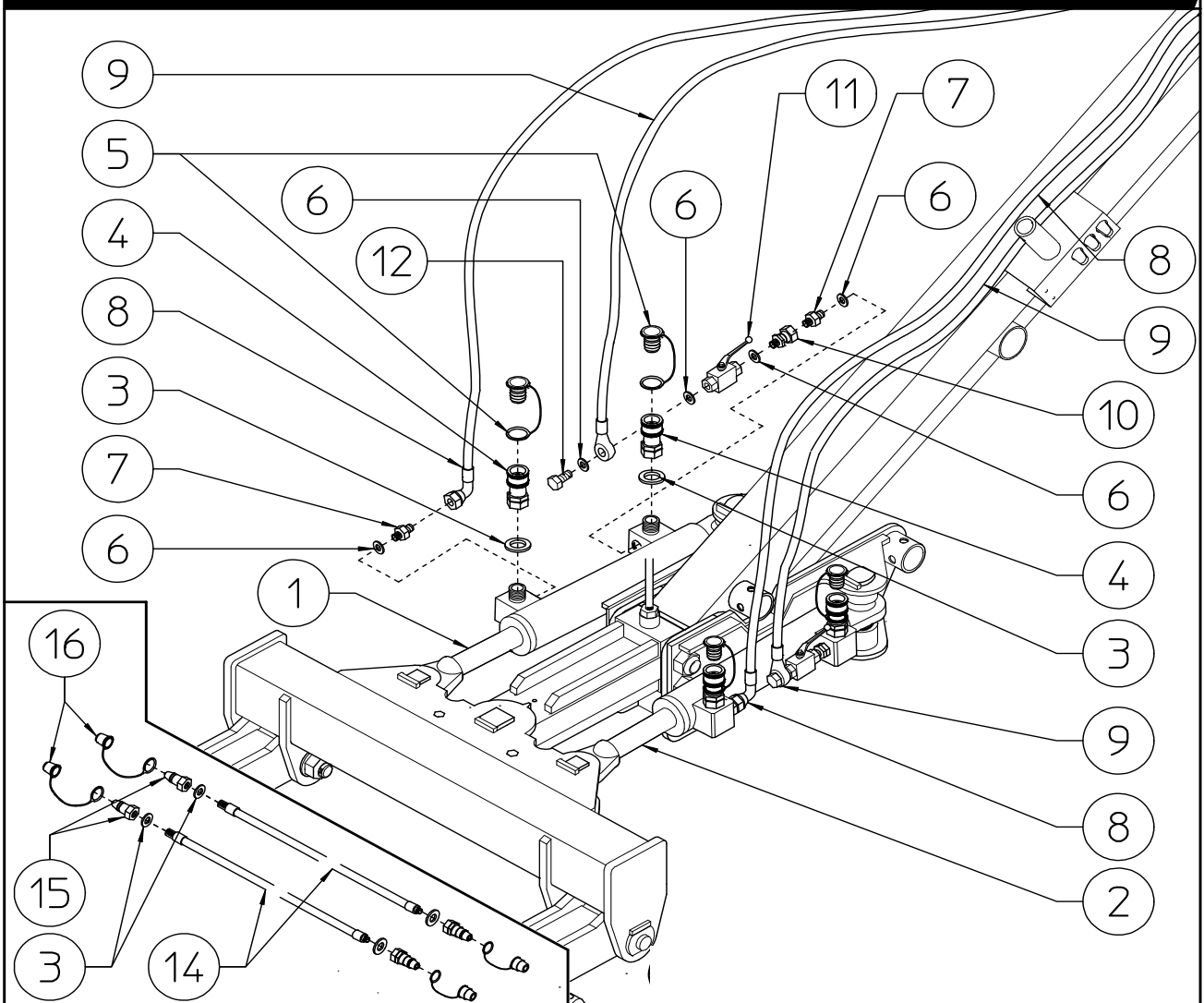
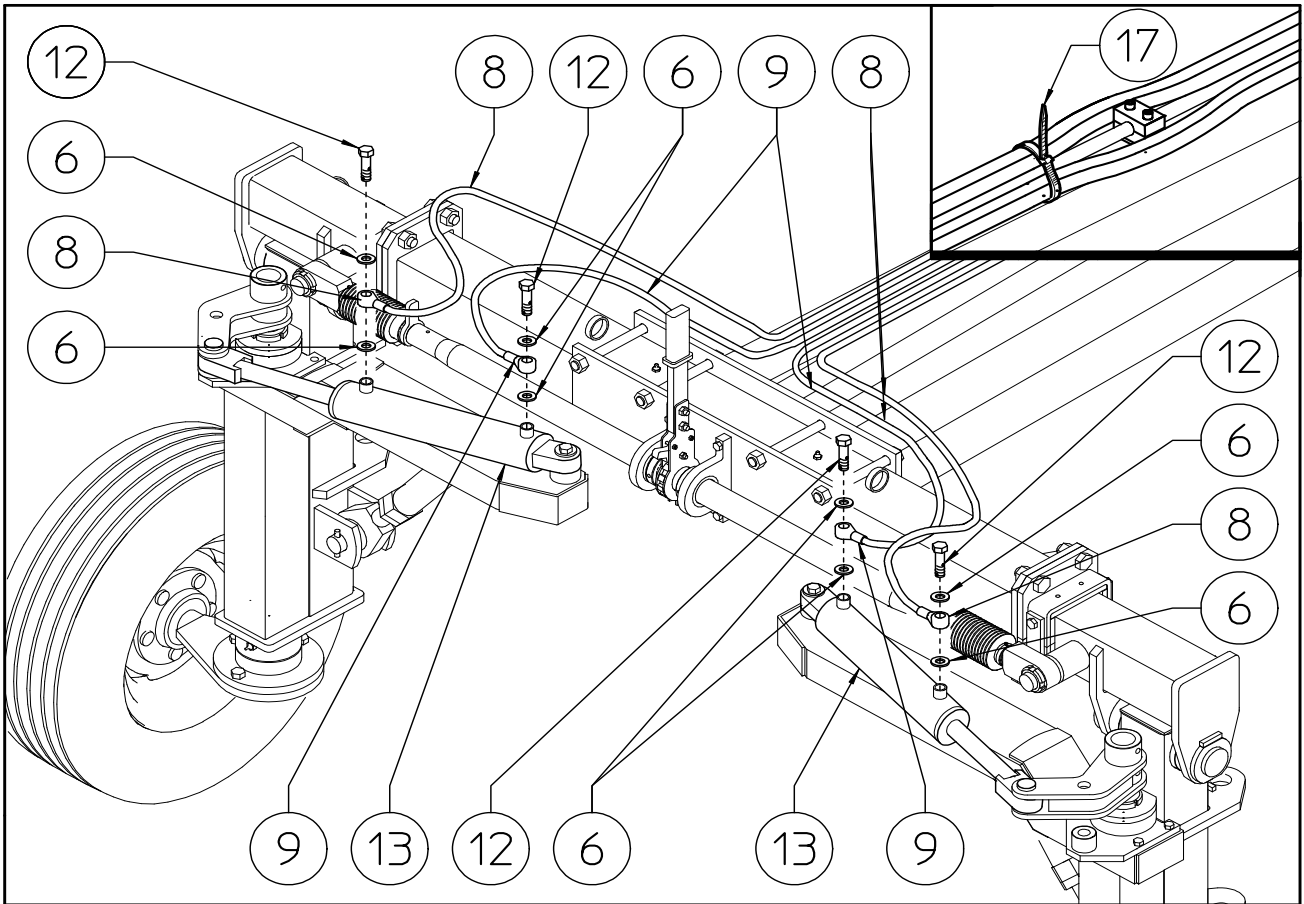


TABLE PART NO 920.325

Item	Q.ty	Part no	DESCRIZIONE	NOTE
1	1	230.898	RH CYLINDER	
2	1	230.899	LH CYLINDER	
3	8	630.048	COPPER WASHER 1/2"	
4	4	610.329	RAPID COUPLING 1/2" (FEMALE)	
5	4	620.505	PROTECTION 1/2"	
6	18	620.452	COPPER WASHER 3/8"	
7	4	600.270	NIPPLE 3/8" - 3/8"	
8	2	630.841	HOSE SAE R2x3/8" F90°-E. 3/8" LG. 7900	MX/8-10
8	2	630.843	HOSE SAE R2x3/8" F90°-E. 3/8" LG. 8700	MK/10-12 MX/12
8	2	630.845	HOSE SAE R2x3/8" F90°-E. 3/8" LG. 11000	MK/14-16
8	2	630.847	HOSE SAE R2x3/8" F90°-E. 3/8" LG. 12700	MK/18-20
9	2	630.840	HOSE SAE R2x3/8" E. 3/8"-E. 3/8" LG. 7900	MX/8-10
9	2	630.842	HOSE SAE R2x3/8" E. 3/8"-E. 3/8" LG. 8700	MK/10-12 MX/12
9	2	630.844	HOSE SAE R2x3/8" E. 3/8"-E. 3/8" LG. 11000	MK/14-16
9	2	630.846	HOSE SAE R2x3/8" E. 3/8"-E. 3/8" LG. 12700	MK/18-20
10	2	600.271	FITTING 3/8"-F 3/8"	
11	2	610.002	VALVE 3/8"	
12	6	600.040	SCREW 3/8"	
13	2	230.096	CYLINDER	
14	2	620.504	HOSE SAE100 R2x3/8" LG 2700 - 1/2"M	
15	4	600.273	RAPID COUPLING 1/2" (MALE)	
16	4	620.500	PROTECTION 1/2"	
17	30	620.039	CLAMP 5x300	

TAVOLA 920.241

Tavola valida per ranghinatori serie EXPLORER MX/8-10-12. I ranghinatori serie MAGNUM MK/10-12-14-16-18-20 hanno questo gruppo montato di serie.

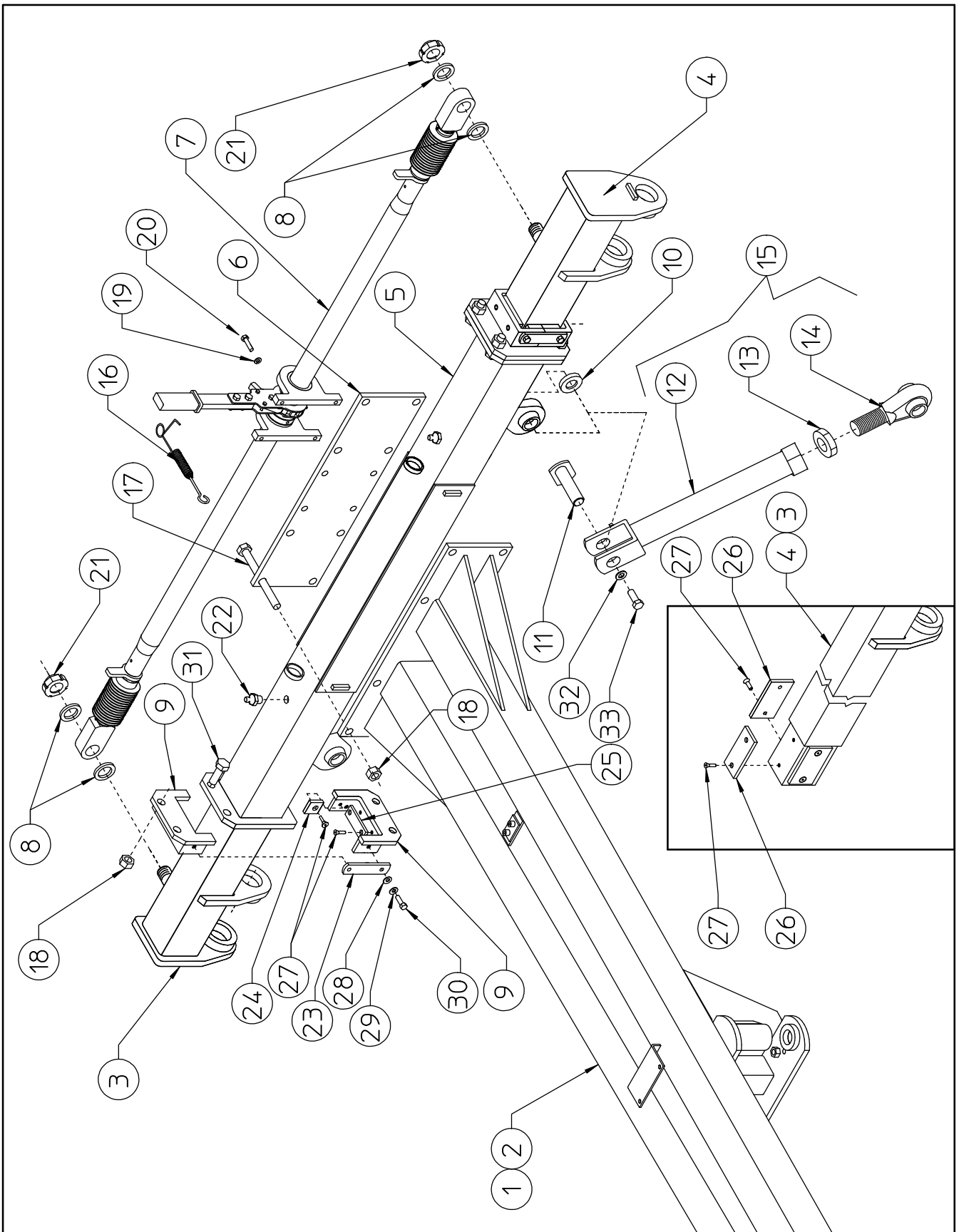


TABLE PART NO 920.241 (FOR MX/8-10-12 WITH NEW STYLE CROSSPIECE)				
ITEM	Q.ty	PART NO	DESCRIPTION	NOTE
1	1	220.659	DRAWBAR	FOR MX/10
2	1	230.117	DRAWBAR	FOR MX/12
3	1	210.830	RH INNER CROSSPIECE	
4	1	210.831	LH INNER CROSSPIECE	
5	1	220.177	CROSSPIECE	
6	1	220.176	COUNTERPLATE	
7	1	210.981	RATCHET LINK	
8	4	220.208	WASHER	
9	4	220.042	SLDING SUPPORT	
10	2	230.161	SHIM	
11	2	220.209	PIN	
12	2	220.222	TIE ROD PIPE	
13	2	610.813	NUT M30	
14	2	220.660	TIE ROD HEAD	
15	2	220.661	TIE ROD, COMPLETE	
16	1	220.378	SPRING	
17	8	610.639	SCREW M16x165	
18	16	600.080	NUT M16	
19	4	600.229	SPRING WASHER $\varnothing 8,5$	
20	4	600.757	SCREW M8x30	
21	2	610.593	LOCK NUT M30x1,5	
22	2	600.034	GREASE NIPPLE M8	
23	4	220.043	LINKING PLATE	
24	8	210.912	SLIDING	
25	4	210.911	SLIDING	
26	8	210.858	SLIDING	
27	32	610.663	SCREW M8x16	
28	8	600.322	WASHER $\varnothing 10,5$	
29	8	600.024	SPRING WASHER $\varnothing 10,5$	
30	8	600.006	SCREW M10x25	
31	8	610.167	SCREW M16x45	
32	2	500.160	FLAT WASHER	
33	2	600.770	SCREW M12x20	

RATCHET LINK PART NO. 220.260				
ITEM	Q.ty	PART NO	DESCRIPTION	NOTE
1	1	610.811	HANDLE	*
2	1	220.213	LEVER	*
3	1	220.182	SCREW PIPE	*
4	1	220.073	SPRING	*
5	2	600.076	NUT M8 DIN 980	*
6	1	600.472	NUT M6 DIN 980	*
7	4	220.208	SHIM	
8	2	610.593	LOCK-NUT M30 X 1.5	
9	1	220.193	TIE ROD RH	*
10	2	610.507	RING	*
11	2	220.192	RUBBER COVER	*
12	1	220.201	LOCKING BUSH RH	*
13	2	220.205	LEVER SUPPORT	*
14	1	220.070	LOCKING HOOK	*
15	2	600.702	SCREW M8 X 25 DIN 933 8.8	*
16	2	220.195	PIPE SUPPORT	*
17	2	220.196	NYLON BUSH	*
18	2	220.206	BUSH	*
19	4	600.107	SPRING PIN D 6 X 18 DIN 1481	*
20	3	610.718	NUT M4 DIN 982 - 8	*
21	1	220.194	TIE ROD LH	*
22	2	600.124	GREASE NIPPLE M6	*
23	2	600.757	SCREW M8 X 30 DIN 933 8.8	
24	2	600.229	SPRING WASHER	
25	1	220.202	LOCKING BUSH LH	*
26	1	600.202	SCREW M6 X 25 DIN 933 8.8	*
27	3	610.717	SCREW M4 X 25 DIN 933 8.8	*
28	3	220.215	BUSH	*
*	1	210.981	RATCHET LINK	



sitrex AGRICULTURAL MACHINERY [®] SpA .

Zona Industriale-Viale Grecia, 8
06018 TRESTINA-(Perugia)-ITALY
Tel. +39.075.8540021-Telefax +39.075.8540523
e-mail: sitrex@sitrex.it www.sitrex.com

