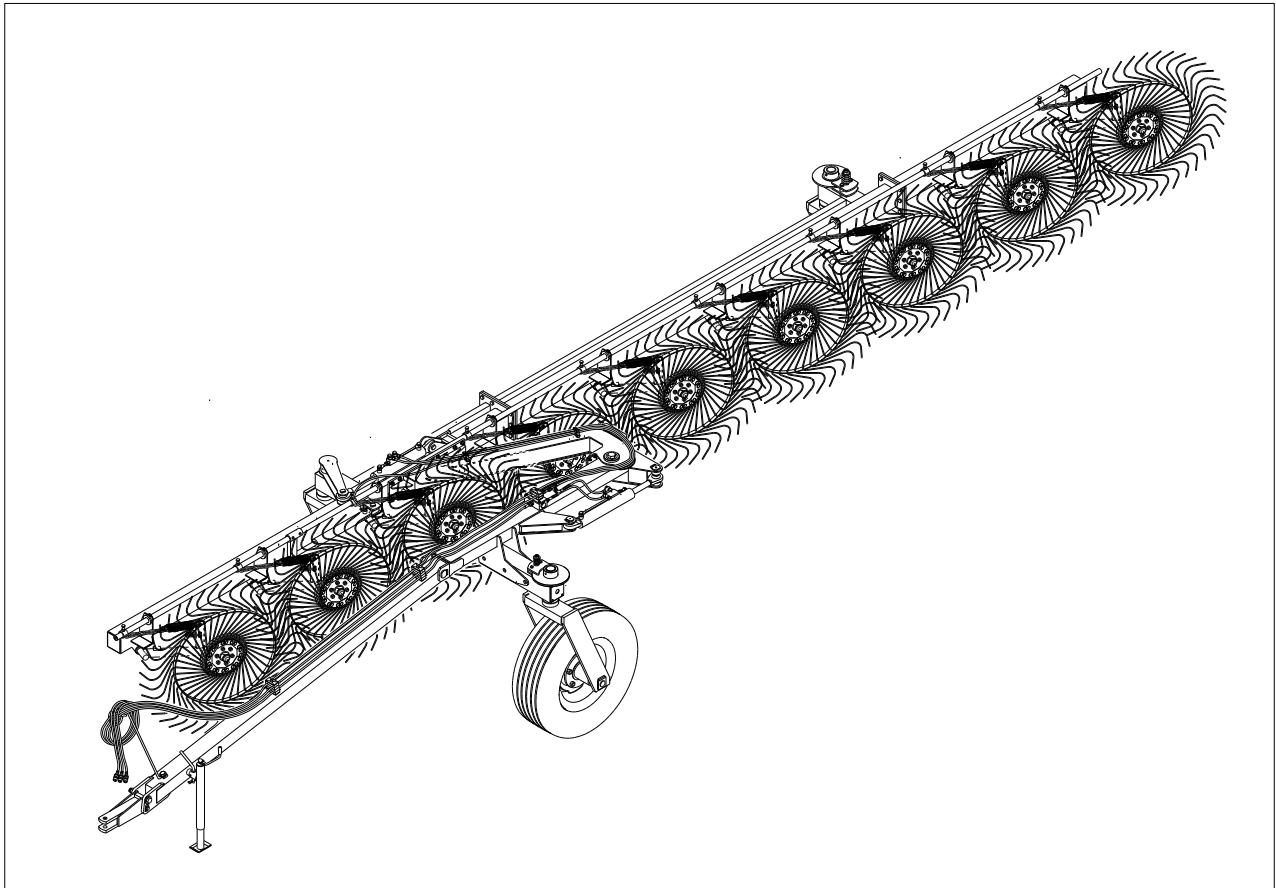


AGRICULTURAL MACHINERY  
**sitrex**®  
Spa

## SPARE PARTS LIST



**TR/6-7-8-9 S**

11-2015 FROM SERIAL NO. 264793

**TABLE  
PART NO  
920.348**

**SEE TABLE  
PART NO  
920.372**

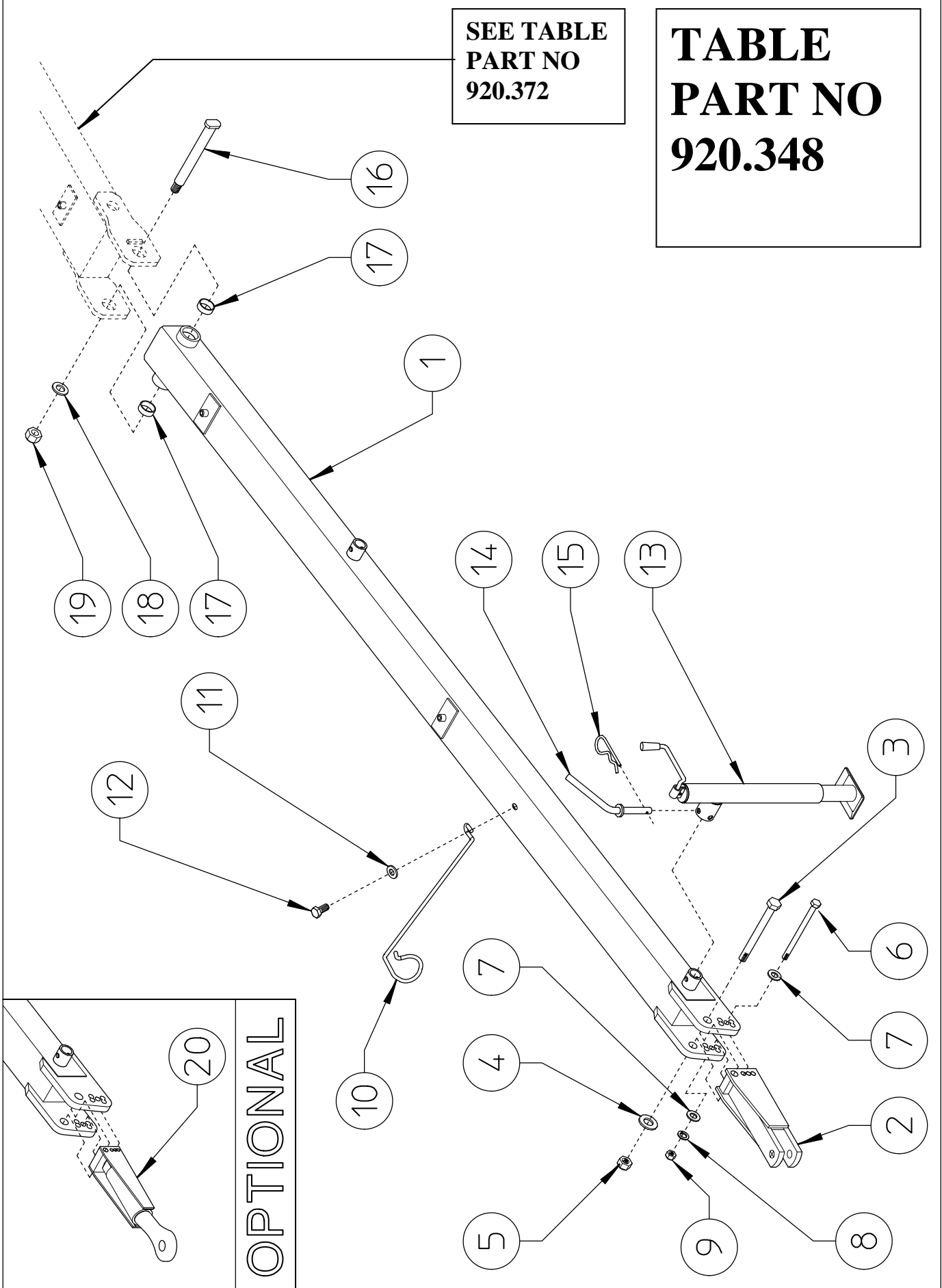
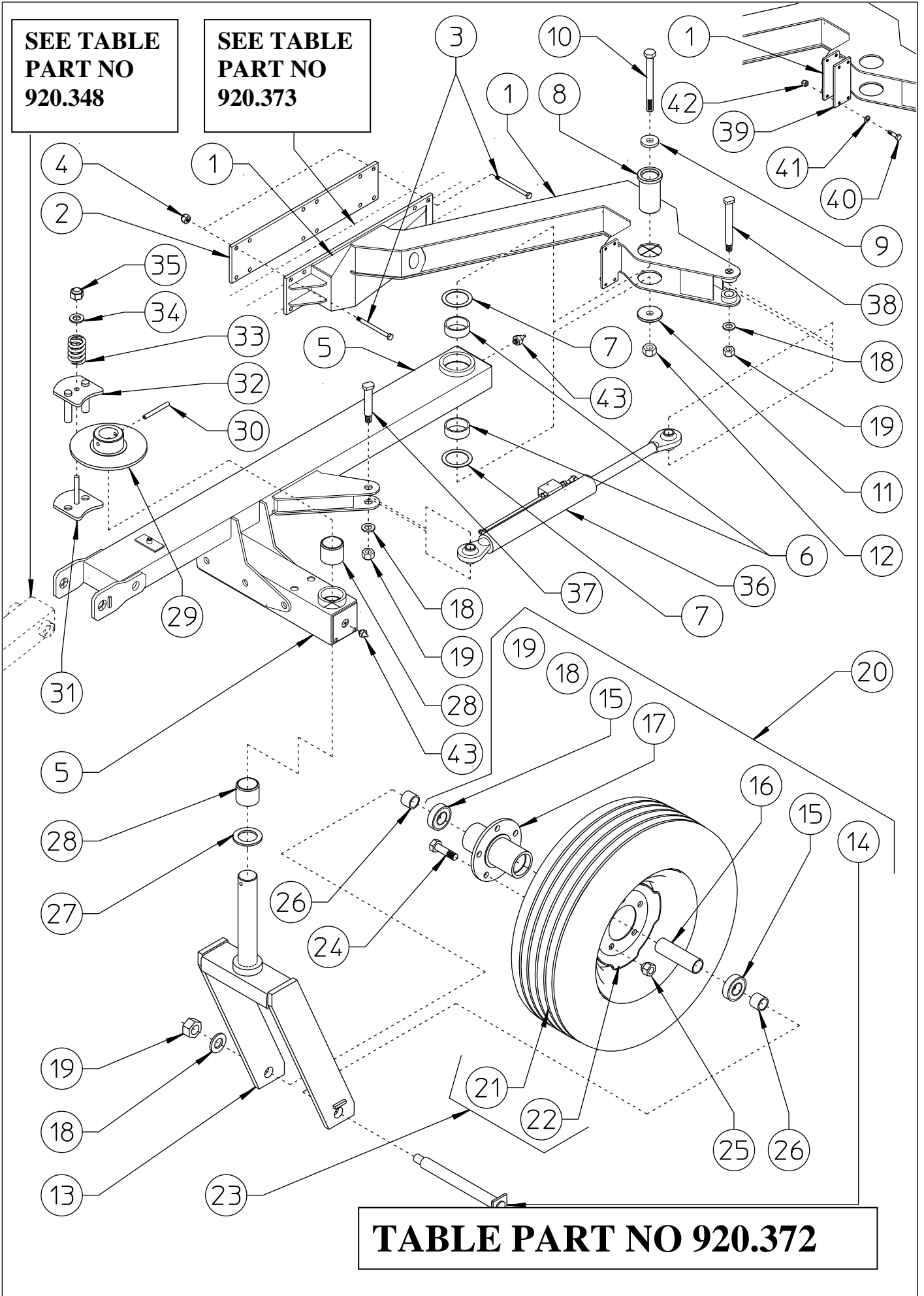


TABLE PART NO 920.348				
ITEM	PART NO	Q.ty	DESCRIPTION	NOTE
1	250.170	1	DRAWBAR	
2	250.301	1	TRACTOR HITCH	STANDARD
3	630.707	1	SCREW M20x140 DIN 931	
4	600.259	1	SPRING WASHER $\phi$ 21	
5	620.473	1	NUT M20 DIN 985	
6	600.001	1	SCREW M12x140 DIN 931	
7	600.092	2	WASHER $\phi$ 12-36x2,5	
8	600.018	1	SPRING WASHER $\phi$ 13	
9	600.366	1	NUT M12 DIN 982	
10	230.574	1	HOSE SUPPORT	
11	500.160	1	WASHER $\phi$ 12-40x4	
12	600.441	1	SCREW M12x25 DIN 933	
13	220.197	1	PARKING STAND	
14	200.222	1	PIN	
15	600.019	1	SPLIT PIN $\phi$ 3	
16	250.179	1	PIN	
17	630.955	2	BUSH $\phi$ 35-39x30	
18	200.165	1	WASHER $\phi$ 23-50x4	
19	600.079	1	NUT M22 DIN 980	
20	230.818	1	TRACTOR HITCH	OPTIONAL

**SEE TABLE  
PART NO  
920.348**

**SEE TABLE  
PART NO  
920.373**



**TABLE PART NO 920.372**

TABLE PART NO 920.372				
ITEM	PART NO	Q.ty	DESCRIPTION	NOTE
1	250.172	1	SUPPORT	
2	250.180	1	COUNTERPLATE	
3	610.612	12	SCREW M14x140 DIN 931	
4	600.075	12	NUT M14 DIN 980	
5	250.171	1	SUPPORT	
6	230.666	2	BUSH	
7	630.956	2	SHIM $\varnothing$ 75-100x1	
8	250.085	1	PIN	
9	230.668	1	WASHER $\varnothing$ 25-64x10	
10	630.964	1	SCREW M24x165	
11	230.667	1	WASHER $\varnothing$ 25-90x10	
12	620.255	1	NUT M24 DIN 980	
13	210.168	1	SUPPORT WHEEL	
14	210.184	1	PIN	
15	600.609	2	BEARING 6206 2RS	
16	200.140	1	SPACER	
17	200.139	1	HUB	
18	200.165	3	WASHER $\varnothing$ 23-50x4	
19	600.079	3	NUT M22 DIN 980	
20	210.169	1	HUB ASSY	
21	600.303	1	TIRE	
22	600.304	1	RIM	
23	600.281	1	COMPLETE WHEEL	
24	600.144	5	SCREW M16x1,5x40 DIN 961	
25	600.289	5	NUT M16x1,5	
26	210.170	2	SPACER	
27	210.179	1	SPACER	
28	200.199	2	BUSH	
29	200.025	1	FLANGE WITH BUSHING	
30	600.033	1	SPRING PIN $\varnothing$ 10x80 DIN 1481	
31	210.931	1	BRAKE COUNTERPLATE	
32	200.810	1	BRAKE	
33	200.044	1	SPRING	
34	600.092	1	WASHER $\varnothing$ 12-36x2,5	
35	600.077	1	NUT M12 DIN 980	
36	250.192	1	CYLINDER $\varnothing$ 50/30x255 WITH VALVE	
37	250.185	1	PIN	
38	250.087	1	PIN	
39	250.181	1	BLOCK	
40	630.009	4	SCREW M8x30 DIN 931	
41	610.185	4	WASHER $\varnothing$ 9-21x2 UNI 6593	
42	600.076	4	NUT M8 DIN 980	
43	600.034	2	GREASE NIPPLE M8	

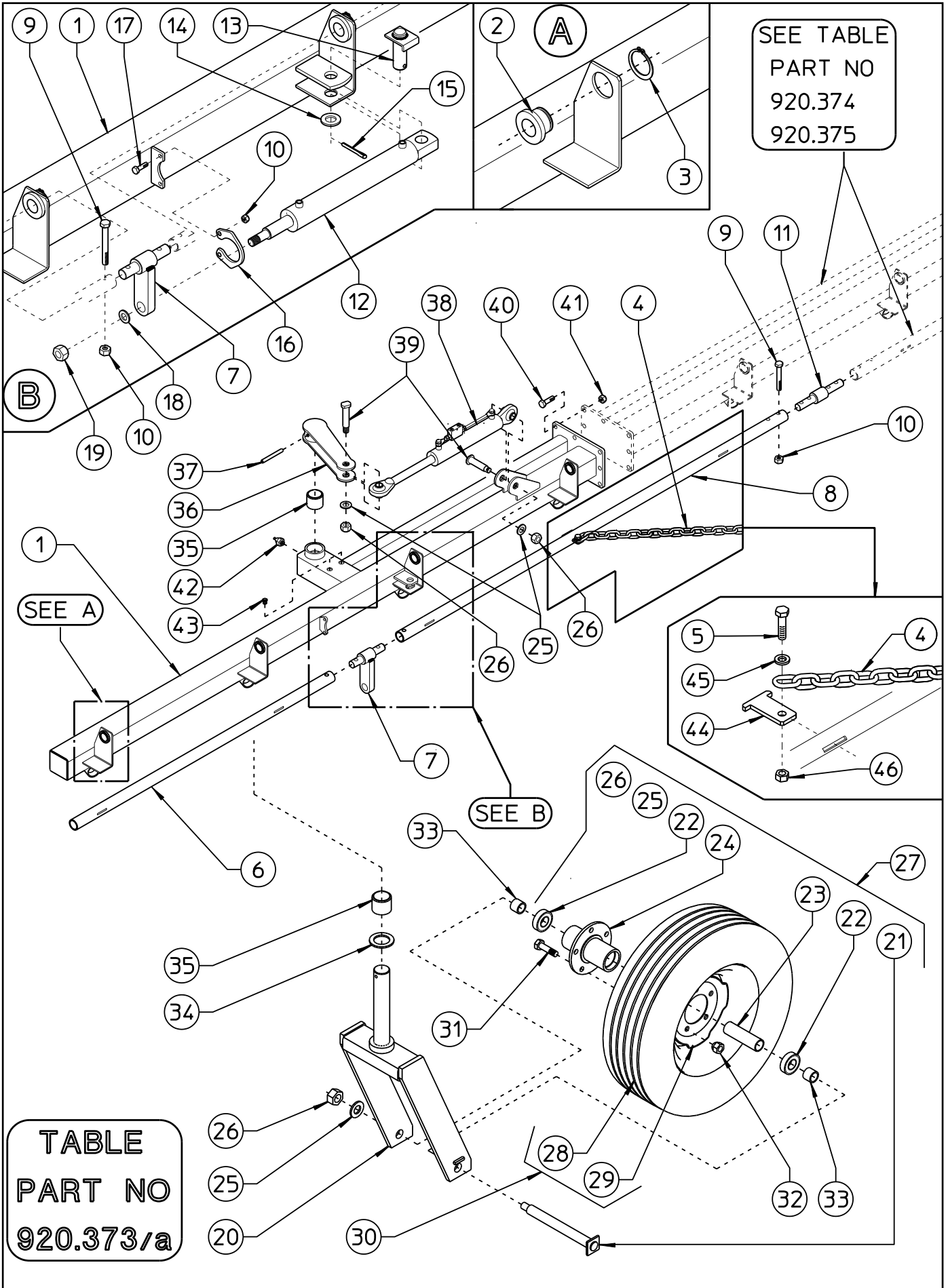


TABLE PART NO 920.373/a				
ITEM	PART NO	Q.ty	DESCRIPTION	NOTE
1	250.446	1	SECTION	
2	250.090	4	BUSH	
3	630.957	4	SEEGER E42 DIN 471	
4	250.282	5	CHaine	
5	600.006	5	SCREW M10 x 25 DIN 933	
6	250.853	1	PIPE (L.1430-56,3")	
7	250.082	1	SUPPORT	
8	250.854	1	PIPE (L.2600-102,3")	
9	600.551	4	SCREW M8 X 45 DIN 931 8.8	
10	600.076	6	NUT M 8 DIN 980	
11	230.586	1	PIN	
12	250.066	1	CYLINDER	
13	230.368	1	PIN	
14	600.336	1	WASHER ø25	
15	600.038	1	SPLIT PIN ø6x35 DIN 94	
16	220.526	1	CYLINDER LOCKING PLATE	
17	600.702	2	SCREW M8 X 25 DIN 931 8.8	
18	600.214	1	SPRING WASHER ø23	
19	600.200	1	NUT M22 DIN 934	
20	210.168	1	SUPPORT WHEEL	
21	210.184	1	PIN	
22	600.609	2	BEARING 6206 2RS	
23	200.140	1	SPACER	
24	200.139	1	HUB	
25	200.165	3	WASHER ø23-50x4	
26	600.079	3	NUT M22 DIN 980	
27	210.169	1	HUB ASSY	
28	600.303	1	TIRE	
29	600.304	1	RIM	
30	600.281	1	COMPLETE WHEEL	
31	600.144	5	SCREW M16x1,5x40	
32	600.289	5	NUT M16x1,5	
33	210.170	2	SPACER	
34	210.179	1	SPACER	
35	200.199	2	BUSH	
36	250.186	1	LEVER	
37	600.033	1	SPRING PIN ø10x80 DIN 1481	
38	250.192	1	CYLINDER WITH VALVE	
39	250.185	2	PIN	
40	610.167	8	SCREW M16x45 DIN 933	
41	600.080	8	NUT M16 DIN 980	
42	600.034	1	GREASE NIPPLE	
43	600.854	2	CAP ø25	
44	250.283	5	SUPPORT	
45	620.250	5	WASHER ø11-30x2,5 UNI 6593	
46	600.029	5	NUT M10 DIN 980	

TABLE  
PART NO  
920.374/a

TR/7-9

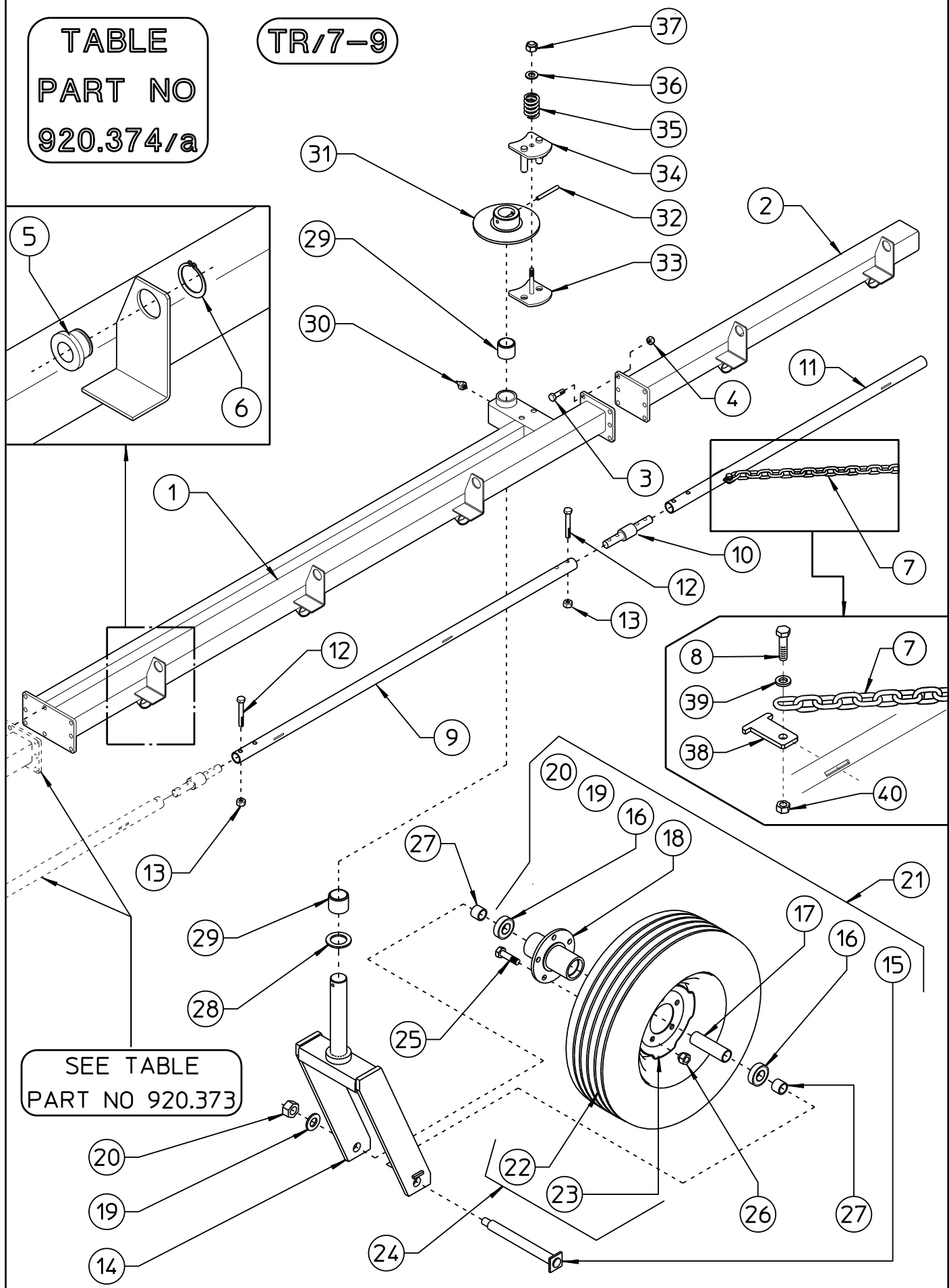




TABLE PART NO 920.374/a					
ITEM	PART NO	Q.ty TR/9	Q.ty TR/7	DESCRIPTION	NOTE
1	250.447	1	1	SECTION	
2	250.175	1	*	SECTION	
3	610.167	6	*	SCREW M16x45 DIN 933	
4	600.080	6	*	NUT M16 DIN 980	
5	250.090	5	3	BUSH	
6	630.957	5	3	SEEGER E42 DIN 471	
7	250.282	4	2	CHAINE	
8	600.006	4	2	SCREW M10 x 25 DIN 933	
9	250.855	1	1	PIPE (L.1670 - 65,75")	
10	230.586	1	*	PIN	
11	250.856	1	*	PIPE (L.1600 - 63")	
12	600.551	6	2	SCREW M8 X 45 DIN 931 8.8	
13	600.076	6	2	NUT M 8 DIN 980	
14	210.168	1	1	SUPPORT WHEEL	
15	210.184	1	1	PIN	
16	600.609	2	2	BEARING 6206 2RS	
17	200.140	1	1	SPACER	
18	200.139	1	1	HUB	
19	200.165	1	1	WASHER $\phi$ 23-50x4	
20	600.079	1	1	NUT M22 DIN 980	
21	210.169	1	1	HUB ASSY	
22	600.303	1	1	TIRE	
23	600.304	1	1	RIM	
24	600.281	1	1	COMPLETE WHEEL	
25	600.144	5	5	SCREW M16x1,5x40	
26	600.289	5	5	NUT M16x1,5	
27	210.170	2	2	SPACER	
28	210.179	1	1	SPACER	
29	200.199	2	2	BUSH	
30	600.034	1	1	GREASE NIPPLE	
31	200.025	1	1	BUSH	
32	600.033	1	1	SPRING PIN $\phi$ 10x80 DIN 1481	
33	210.931	1	1	BRAKE COUNTER PLATE	
34	200.810	1	1	BRAKE	
35	200.044	1	1	SPRING	
36	600.092	1	1	WASHER $\phi$ 12-36x2,5	
37	600.077	1	1	NUT M12 DIN 980	
38	250.283	4	2	SUPPORT	
39	620.250	4	2	WASHER $\phi$ 11-30x2,5 UNI 6593	
40	600.029	4	2	NUT M10 DIN 980	

TABLE  
PART NO  
920.375/a

TR/6-8

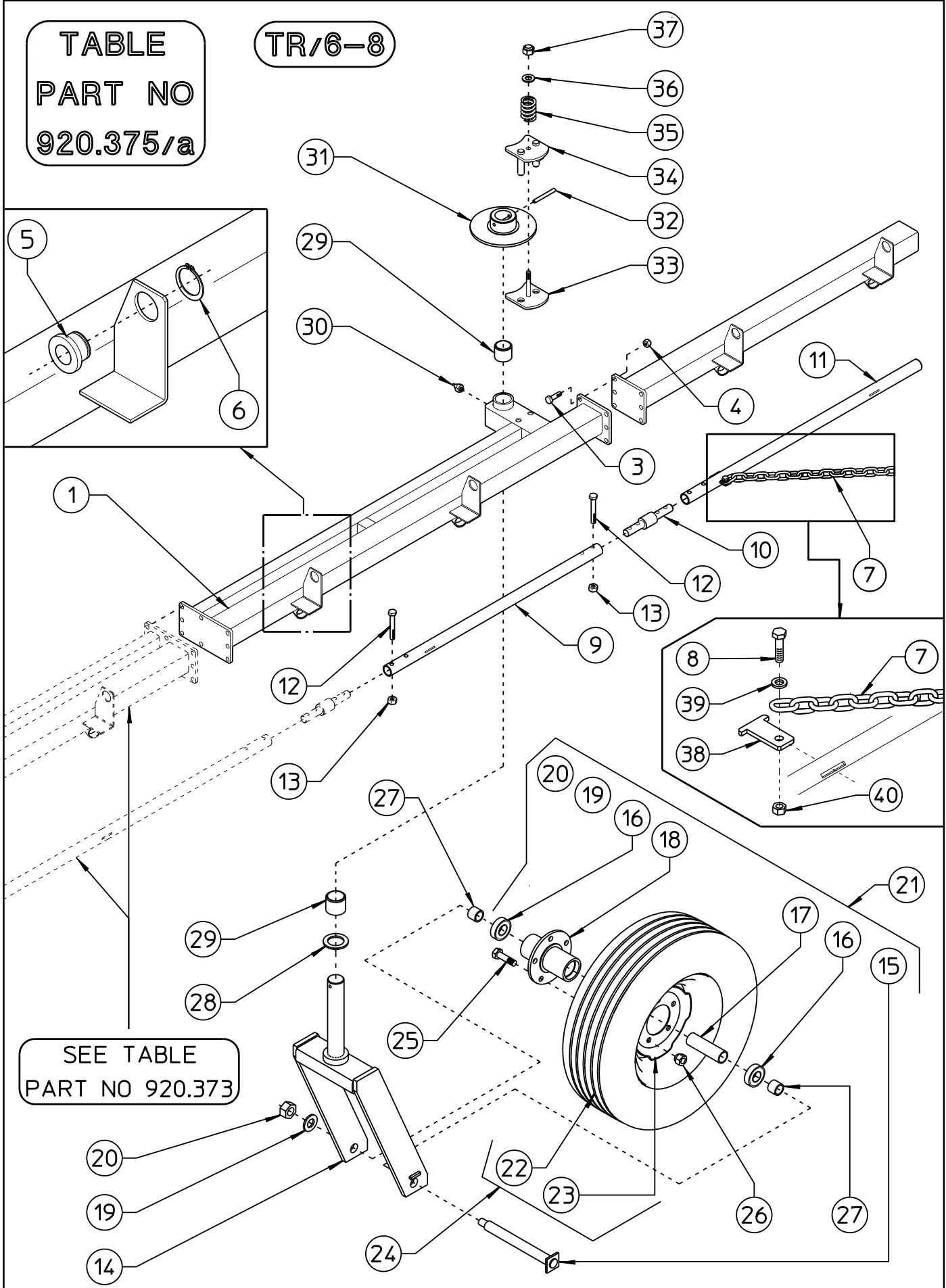


TABLE PART NO 920.375/a					
ITEM	PART NO	Q.ty TR/8	Q.ty TR/6	DESCRIPTION	NOTE
1	250.448	1	1	SECTION	
2	250.175	1	*	SECTION	
3	610.167	6	*	SCREW M16x45 DIN 933	
4	600.080	6	*	NUT M16 DIN 980	
5	250.090	4	2	BUSH	
6	630.957	4	2	SEEGER E42 DIN 471	
7	250.282	3	2	CHAINE	
8	600.006	3	2	SCREW M10 x 25 DIN 933	
9	250.857	1	1	PIPE (L.825 - 32,5")	
10	230.586	1	*	PIN	
11	250.856	1	*	PIPE (L.1600 - 63")	
12	600.551	6	2	SCREW M8 X 45 DIN 931 8.8	
13	600.076	6	2	NUT M 8 DIN 980	
14	210.168	1	1	SUPPORT WHEEL	
15	210.184	1	1	PIN	
16	600.609	2	2	BEARING 6206 2RS	
17	200.140	1	1	SPACER	
18	200.139	1	1	HUB	
19	200.165	1	1	WASHER $\phi$ 23-50x4	
20	600.079	1	1	NUT M22 DIN 980	
21	210.169	1	1	HUB ASSY	
22	600.303	1	1	TIRE	
23	600.304	1	1	RIM	
24	600.281	1	1	COMPLETE WHEEL	
25	600.144	5	5	SCREW M16x1,5x40	
26	600.289	5	5	NUT M16x1,5	
27	210.170	2	2	SPACER	
28	210.179	1	1	SPACER	
29	200.199	2	2	BUSH	
30	600.034	1	1	GREASE NIPPLE	
31	200.025	1	1	BUSH	
32	600.033	1	1	SPRING PIN $\phi$ 10x80 DIN 1481	
33	210.931	1	1	BRAKE COUNTER PLATE	
34	200.810	1	1	BRAKE	
35	200.044	1	1	SPRING	
36	600.092	1	1	WASHER $\phi$ 12-36x2,5	
37	600.077	1	1	NUT M12 DIN 980	
38	250.283	3	1	SUPPORT	
39	620.250	3	1	WASHER $\phi$ 11-30x2,5	
40	600.029	3	1	NUT M10 DIN 980	

TABLE  
PART NO  
920.353

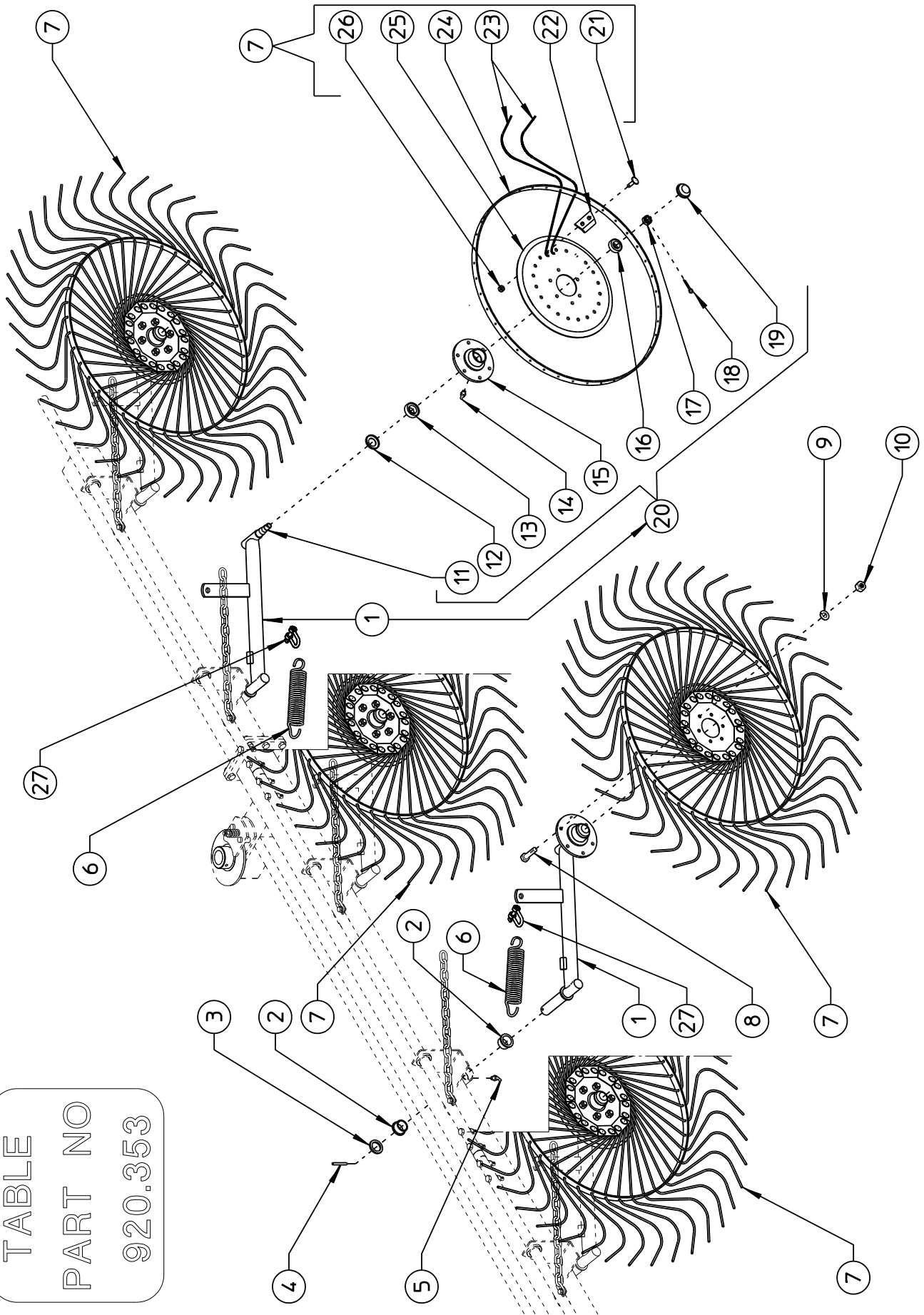
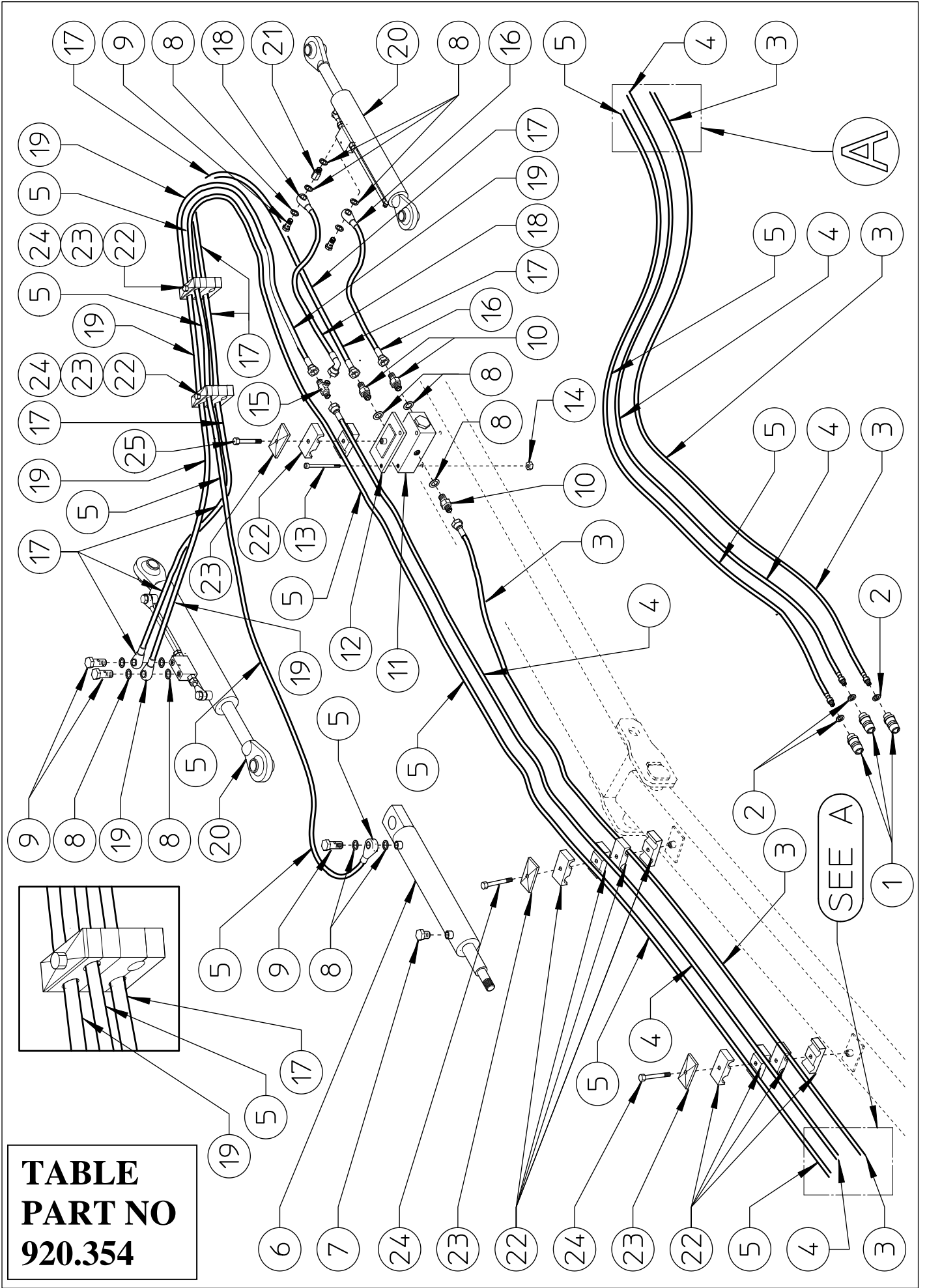
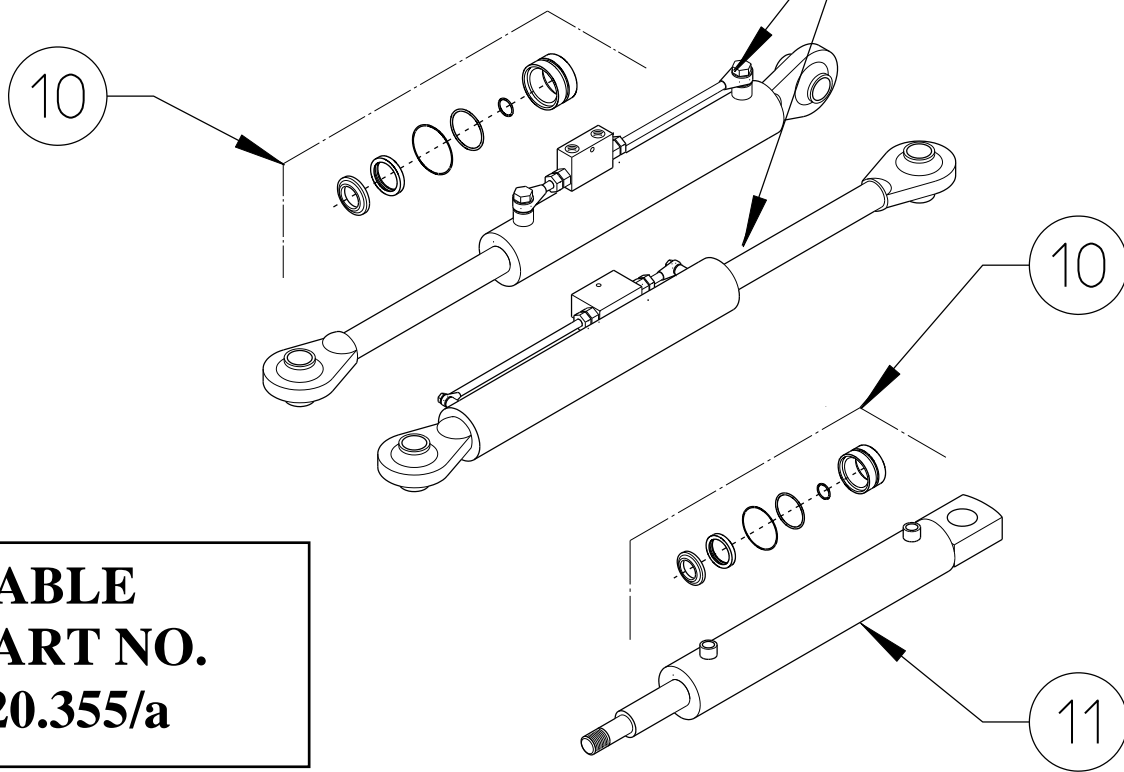
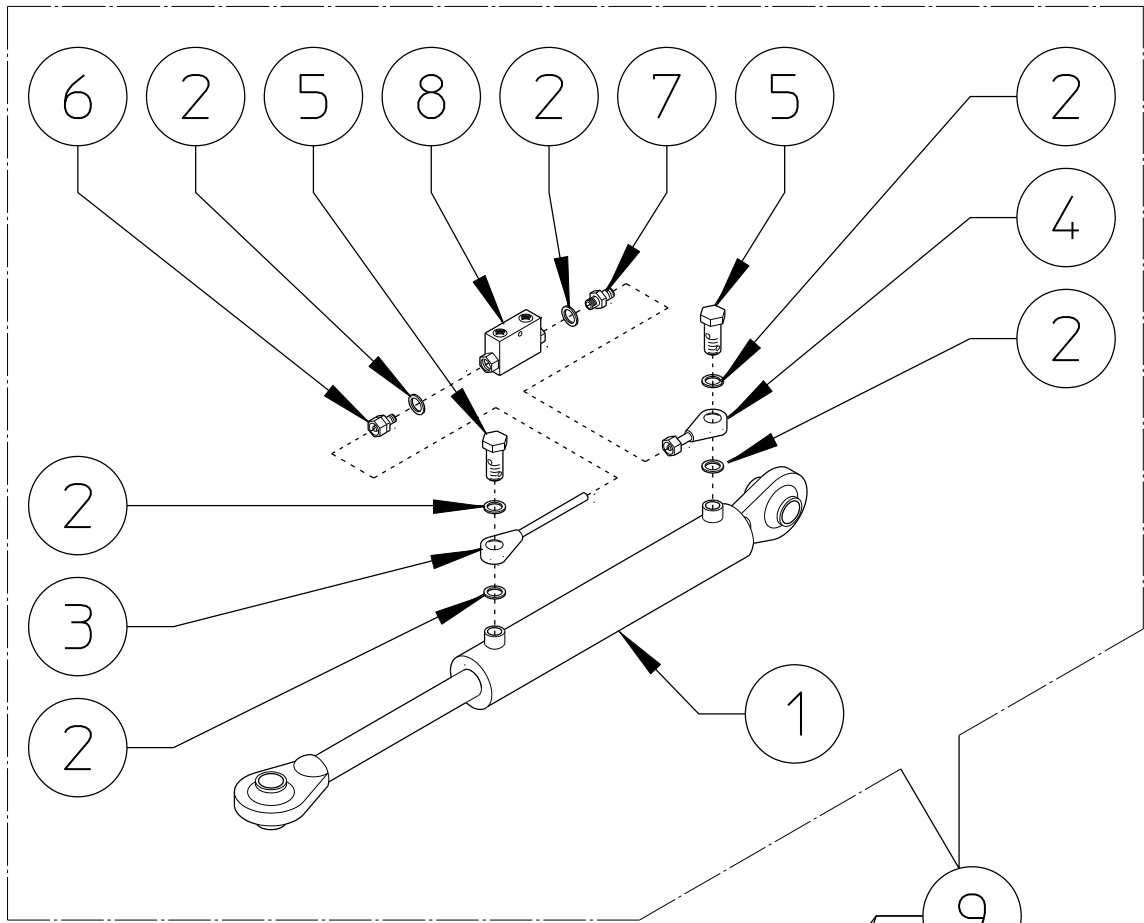


TABLE PART NO 920.353									
ITEM	DESCRIPTION	TR/6		TR/7		TR/8		TR/9	
		PART NO	Q.ty	PART NO	Q.ty	PART NO	Q.ty	PART NO	Q.ty
1	ARM	200.008	6	200.008	7	200.008	8	200.008	9
2	BUSH	200.029	12	200.029	14	200.029	16	200.029	18
3	WASHER $\phi$ 35-50	200.028	6	200.028	7	200.028	8	200.028	9
4	SPRING PIN $\phi$ 8x50 DIN 1481	600.027	6	600.027	7	600.027	8	600.027	9
5	GREASE NIPPLE M6x45°	600.968	6	600.968	7	600.968	8	600.968	9
6	SPRING	200.046	6	200.046	7	200.046	8	200.046	9
7	FINGER WHEEL ASSY	210.180	6	210.180	7	210.180	8	210.180	9
8	SCREW M10x25 DIN 933	600.006	36	600.006	42	600.006	48	600.006	54
9	SPRING WASHER $\phi$ 10,5	600.024	36	600.024	42	600.024	48	600.024	54
10	NUT M10 DIN 934	600.010	36	600.010	42	600.010	48	600.010	54
11	PIN	205.277	6	205.277	7	205.277	8	205.277	9
12	DUST COVER	600.011	6	600.011	7	600.011	8	600.011	9
13	BEARING 30205	600.012	6	600.012	7	600.012	8	600.012	9
14	GREASE NIPPLE M8	600.034	6	600.034	7	600.034	8	600.034	9
15	HUB	600.013	6	600.013	7	600.013	8	600.013	9
16	BEARING 30204	600.014	6	600.014	7	600.014	8	600.014	9
17	CASTLE NUT M18x1,5	600.015	6	600.015	7	600.015	8	600.015	9
18	SPLIT PIN $\phi$ 3x30 DIN 94	600.301	6	600.301	7	600.301	8	600.301	9
19	CAP	600.016	6	600.016	7	600.016	8	600.016	9
20	HUB ASSY	205.041	6	205.041	7	205.041	8	205.041	9
21	SCREW M10x25 DIN 603	600.005	120	600.005	140	600.005	160	600.005	180
22	TINE CLAMP	200.012	60	200.012	70	200.012	80	200.012	90
23	TINE $\phi$ 7	210.621	240	210.621	280	210.621	320	210.621	360
24	RIM	200.009	6	200.009	7	200.009	8	200.009	9
25	FLANGE	200.010	6	200.010	7	200.010	8	200.010	9
26	NUT M10 DIN 980	600.029	120	600.029	140	600.029	160	600.029	180
27	U BOLT	610.317	6	610.317	7	610.317	8	610.317	9



**TABLE**  
**PART NO**  
**920.354**

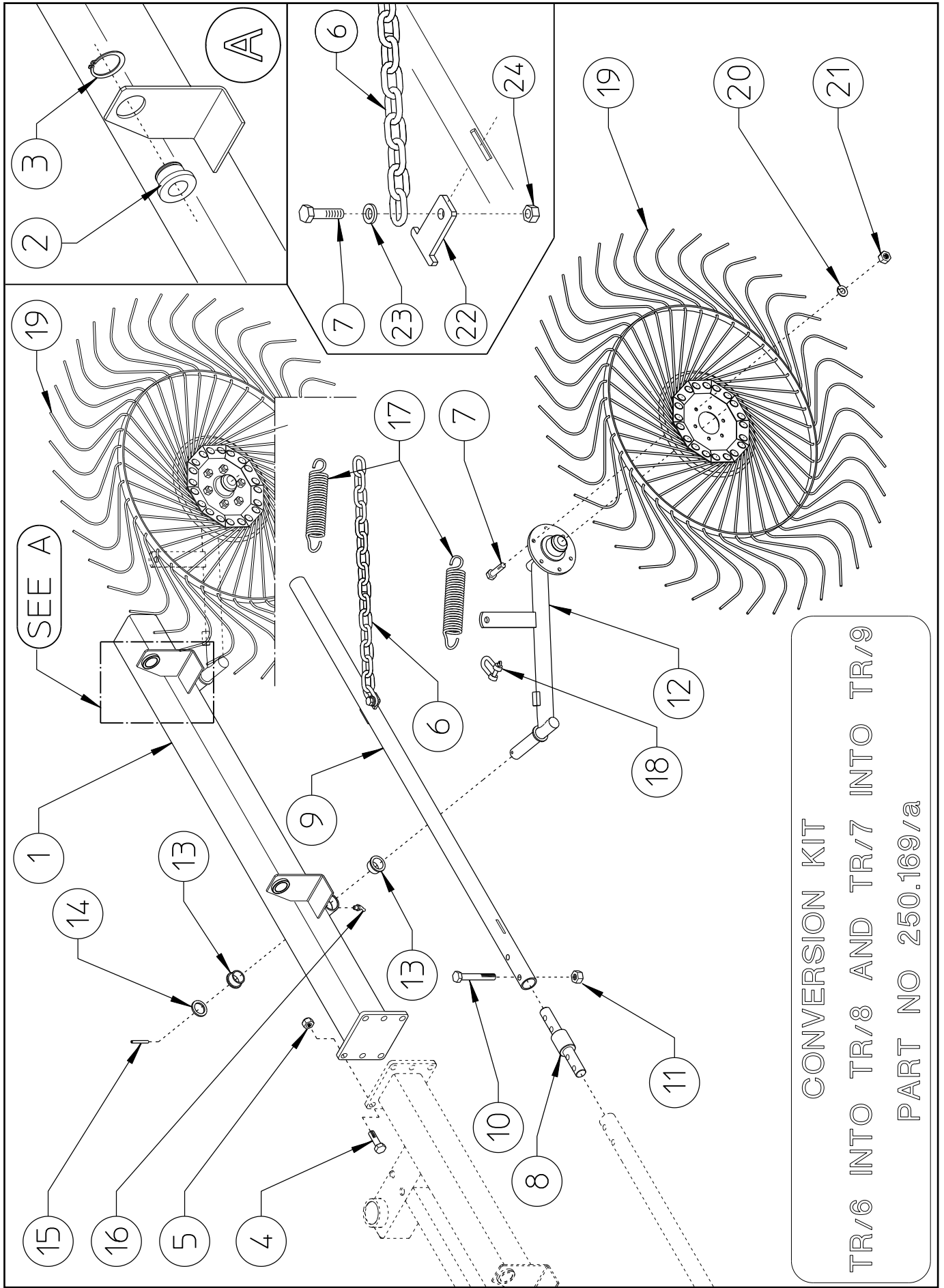
TABLE PART NO 920.354				
ITEM	PART NO	Q.ty	DESCRIPTION	NOTE
1	600.273	3	RAPID COUPLING 1/2"	
2	630.048	3	COPPER WASHER 1/2"	
3	640.068	1	HOSE SAE 100R2AT 1/4" L.5200-205" MD 1/2" - FD 1/4"	
4	640.067	1	HOSE SAE 100R2AT 1/4" L.5350-211" MD 1/2" - FD 1/4"	
5	640.069	1	HOSE SAE 100R2AT 1/4" L.8100-323" MD 1/2" - O. 3/8"	
6	250.066	1	CYLINDER ø50/30x280	
7	620.012	1	CAP 3/8"	
8	620.452	14	COPPER WASHER 3/8"	
9	600.040	5	FITTING SCREW 3/8"	
10	600.883	3	NIPPLE 3/8"-1/4"	
11	600.974	1	FLOW DIVIDER	
12	210.330	1	HOSE SUPPORT	
13	640.021	2	SCREW M6x140 DIN 931	
14	600.472	2	NUT M6 DIN 980	
15	600.823	1	"T" FITTING MALE 1/4"	
16	640.070	1	HOSE SAE 100R2AT 1/4" L.460-182 FD 1/4" - O. 3/8"	
17	640.071	1	HOSE SAE 100R2AT 1/4" L.2450-97" FD 1/4" - O. 3/8"	
18	640.072	1	HOSE SAE 100R2AT 1/4" L.420-17" F90° 1/4" - O. 3/8"	
19	640.073	1	HOSE SAE 100R2AT 1/4" L.2350-93" FD 1/4" - O. 3/8"	
20	250.192	2	CYLINDER ø50/30x255 WITH VALVE	
21	632.013	1	FITTING MALE-FEMALE 3/8"	
22	630.457	18	DOUBLE HOSE COLLAR ø16	
23	610.164	5	PLATE	
24	610.525	4	SCREW M8x60 DIN 931	
25	610.165	1	SCREW M8x35 DIN 933	



**TABLE**  
**PART NO.**  
**920.355/a**



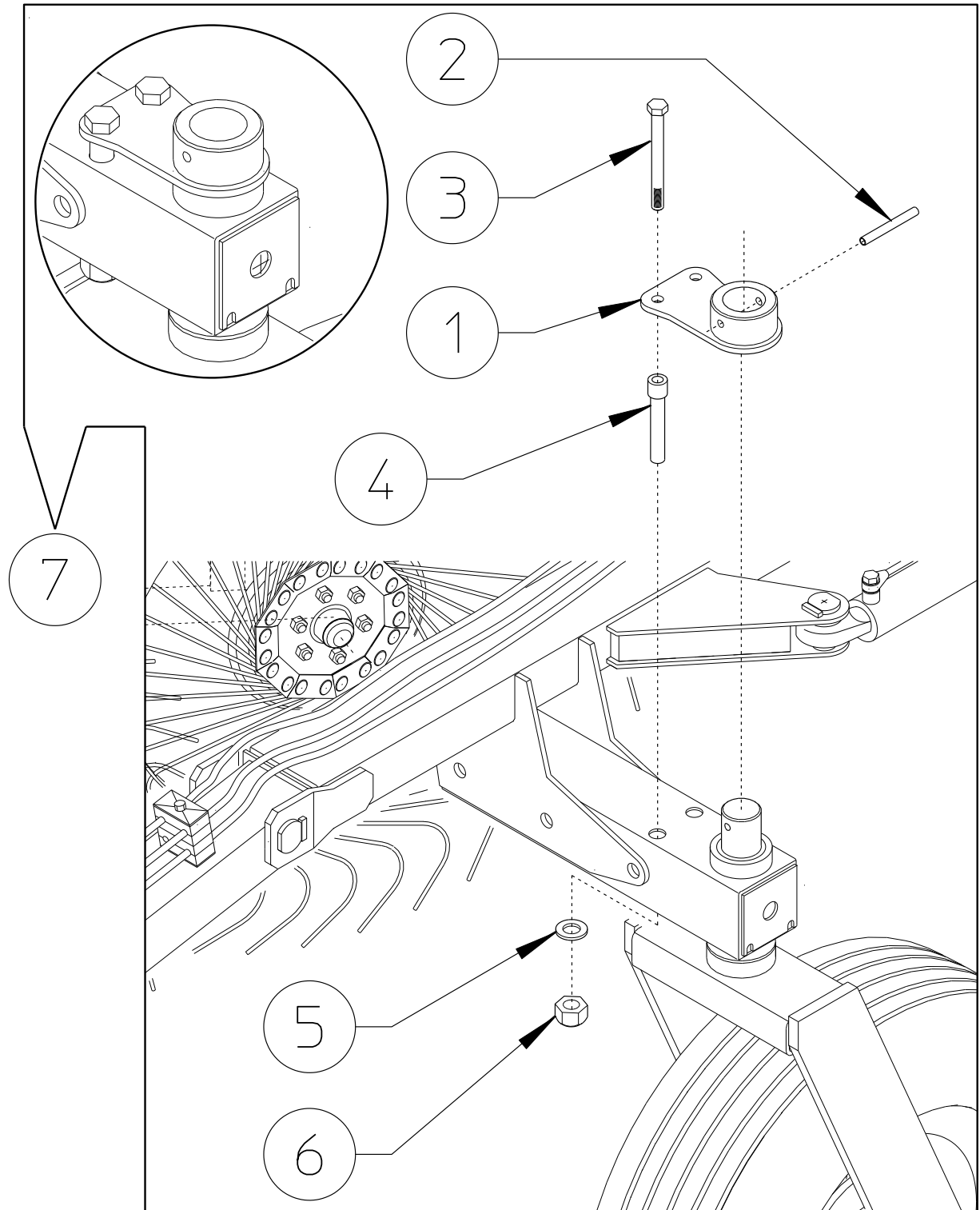
TABLE PART NO 920.355/a				
ITEM	PART NO	Q.ty	DESCRIPTION	NOTE
1	250.184	2	CYLINDER $\phi$ 50/30x255	
2	620.452	12	COPPER WASHER 3/8"	
3	250.360	2	TUBE $\phi$ 12	
4	630.315	2	FITTING 3/8"	
5	600.040	4	FITTING SCREW 3/8"	
6	610.469	2	FITTING 3/8"	
7	600.270	2	NIPPLE 3/8" - 3/8"	
8	600.799	2	LOCK VALVE 3/8"	
9	250.192	2	CYLINDER $\phi$ 50/30x255 WITH VALVE	
10	640.027	3	SET OF GASKET	
11	250.066	1	CYLINDER $\phi$ 50/30x280	



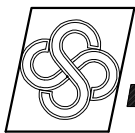
CONVERSION KIT  
 TR/6 INTO TR/8 AND TR/7 INTO TR/9  
 PART NO 250.169/a

CONVERSION KIT TR/6 INTO TR/8 AN TR/7 INTO TR/9 PART NO 250.169/a				
ITEM	DESCRIPTION	PART NO	Q.ty	NOTE
1	SECTION	250.175	1	
2	BUSH	250.090	2	
3	SEEGER E 42 DIN 471	630.957	2	
4	SCREW M16x45 DIN 933	610.167	6	
5	NUT M16 DIN 980	600.080	6	
6	CHAINE	250.282	2	
7	SCREW M10x25 DIN 933	600.006	14	
8	PIN	230.586	1	
9	TUBE (L.1575 - 62")	250.081	1	
10	SCREW M8x45 DIN 931	600.551	4	
11	NUT M8 DIN 980	600.076	4	
12	ARM	200.008	2	
13	BUSH	200.029	4	
14	WASHER $\phi$ 35-50	200.028	2	
15	SPRING PIN $\phi$ 8x50 DIN 1481	600.027	2	
16	GREASE NIPPLE M6x45°	600.968	2	
17	SPRING	200.046	2	
18	U BOLT	610.317	2	
19	FINGER WHEEL ASSY	210.180	2	
20	SPRING WASHER $\phi$ 10,5	600.024	12	
21	NUT M10 DIN 934	600.010	12	
22	SUPPORT	250.283	2	
23	WASHER $\phi$ 11-30x2,5 UNI 6593	620.250	2	
24	NUT M10 DIN 980	600.029	2	

# WHEEL LOCK KIT (OPTIONAL) PART NO 250.449



ITEM	PART NO	Q.ty	DESCRIPTION	NOTE
1	250.182	1	LOCK	
2	600.033	1	SPRING PIN $\varnothing$ 10x80 DIN 1481	
3	600.807	2	SCREW M12x160 DIN 931 8.8	
4	250.183	2	BUSH $\varnothing$ 21-30 x 134	
5	600.092	2	WASHER $\varnothing$ 12-36x2,5	
6	600.077	2	NUT M12 DIN 980	
7	250.449	1	WHEEL LOCK KIT	OPTIONAL



**sitrex** AGRICULTURAL MACHINERY <sup>®</sup> Spq .

Zona Industriale-Viale Grecia, 8  
06018 TRESTINA-(Perugia)-ITALY  
Tel. +39.075.8540021-Telefax +39.075.8540523  
e-mail: sitrex@sitrex.it www.sitrex.com

