

COVID-19 Employee Attestation Playbook

As an employer, you want to feel confident that you are providing a safe environment for employees to return to the workplace. Your employees also want peace of mind knowing the procedures and protocols you implement are designed to protect their health. To support both you and your employees with these goals, Marsh & McLennan Agency (MMA) has developed a new resource, the COVID-19 Employee Attestation Playbook.

About the Playbook

In place of or in addition to COVID-19 testing for your employee population, the attestation process supports employees' self-monitoring, affirming their health and identifying their readiness to return to the workplace through comprehensive attestation forms.

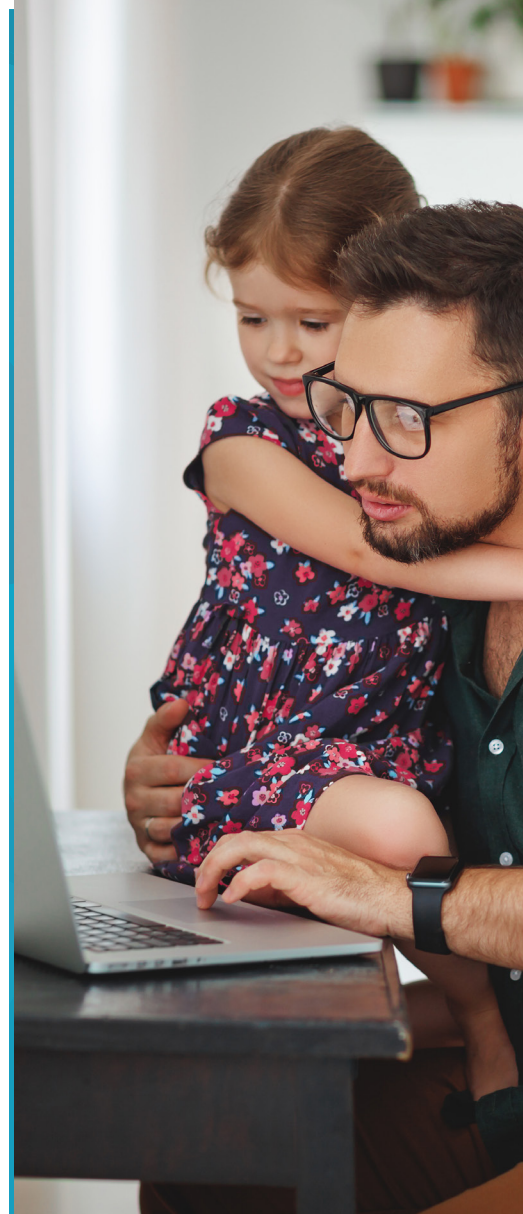
Our playbook includes simple, easy-to-read information for employees to gauge their health based on CDC guidelines, along with editable form content for employee self-screening and attestation regarding COVID-19 status.

Three-Step Process

Structured into a three-step process, you will find all the necessary resources and materials you need if employee attestation is part of your overall approach to bringing employees back into the workplace.

Mapping a Bright Future

MMA is committed to being there in the moments that matter and in these unique times, we are working to help you with the steps to get you on the road to recovery. To learn more about how we are helping employers and to gain access to our COVID-19 Employee Attestation Playbook, reach out to your local MMA representative.



L&T is committed to providing up-to-date information for employers on the Coronavirus.

TO ACCESS RESOURCES
AT YOUR FINGERTIPS:

Visit our dedicated Coronavirus Resource page.

<https://marketing.lovitt-touche.com/coronavirus>

This document is not intended to be taken as advice regarding any individual situation and should not be relied upon as such. Marsh & McLennan Agency LLC shall have no obligation to update this publication and shall have no liability to you or any other party arising out of this publication or any matter contained herein. Any statements concerning actuarial, tax, accounting or legal matters are based solely on our experience as consultants and are not to be relied upon as actuarial, accounting, tax or legal advice, for which you should consult your own professional advisors. Any modeling analytics or projections are subject to inherent uncertainty and the analysis could be materially affected if any underlying assumptions, conditions, information or factors are inaccurate or incomplete or should change. Copyright © 2020 Marsh & McLennan Insurance Agency LLC. All rights reserved. CA Insurance Lic: 0H18131.