



VERBINDT. VERSTERKT.

FOCUS  
ONLINE

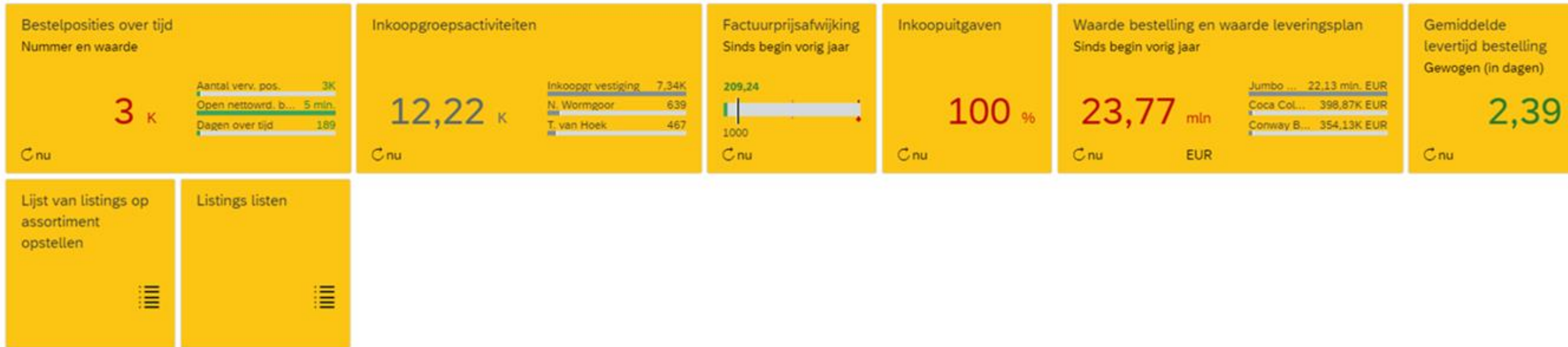
8 T/M 12 NOVEMBER 2021

# Welkom



**JUMBO**

# Embedded Analytics bij Jumbo



# Nico Buwalda

Business Consultant Analytics



25 jaar Analytics ervaring, sinds 2006 Consultancy.

Wholesale/Retail/Industry  
Supply Chain Planning, Demand Management

Combineren van  
Industry/Retail ervaring met  
SAP kennis

Getrouwd, 2 kinderen  
Wandelen, zwemmen



Nico Buwalda  
*Business Consultant*

# Agenda

---

1

## **Intro tot Jumbo (S4) en Analytics**

- Jumbo
- Iedereen is uniek... Of toch niet helemaal?
- Welke soorten vragen / oplossingen

2

## **Demo: Embedded Analytics**

- Jumbo Inbound Delivery

3

## **Hoe loopt project en wat kan je aanpassen?**

- Waarom zou je iets aanpassen?
- Hoe dan

4

**Q&A**

# Agenda

---

1

## **Intro tot Jumbo en Analytics**

- Jumbo
- Iedereen is uniek... Of toch niet helemaal?
- Welke soorten vragen / oplossingen

2

3

4

# Jumbo





**Doel  
gehaald?**

**Groei**

**Uitzonderingen?**

**Omzet**

**Ad Hoc  
analyse**

**Winst**

**Ik wil gewoon een  
rapport.**



# Use Case. Hoe zet je die op?

## Snellere toegang tot betere info

### Doelstelling gehaald?

Nee, omzet deze week 10% beneden budget

### Uitzonderingen?

Indien niet, waar niet? Winkels in Regio Noord, Product groep A verklaart de 10% voor grootste deel

### Detail Analyse

Bij welke klantgroep, welk product precies?

### Ad Hoc Ontdekken

Nieuwe inzichten, verbanden?



### Incident of Trend?

Incident, Year to Date gaat goed



# Informatie pyramide

Strategisch, Tactisch of Operationeel: Waarover

Strategisch

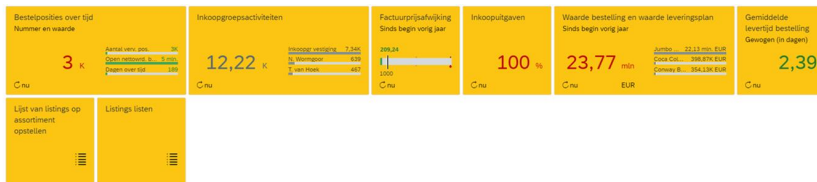
- Board, Supply Chain director
- Haalt Supply chain doelstellingen
  - Kosten versus service
- Trend, Meerdere bronnen (SAP, MM+SD+FIN), non SAP)
- Maand/divisie

Tactisch

- Planners, Service mngr
- Service niet goed, waarom?
  - Welk soort leveringen (product, klant) zijn vaak te laat en waarom?
- Trend, Paar bronnen (SAP SD+non SAP WMS)
- Week/product groep

Operational

- Planners, Service medewerkers, Analisten
- Welke leveringen hangen deze week en hoe kan ik ze vrij geven?
- Nu, 1 bron
  - Real time, document



# Agenda

---

1

## **Intro tot Jumbo en Analytics**

- Jumbo
- Iedereen is uniek... Of toch niet helemaal?
- Welke soorten vragen / oplossingen

2

## **Demo: Embedded Analytics**

- Jumbo Inbound Delivery

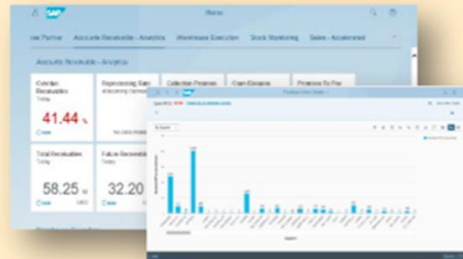
3

4

# Samenvatting Embedded Analytics

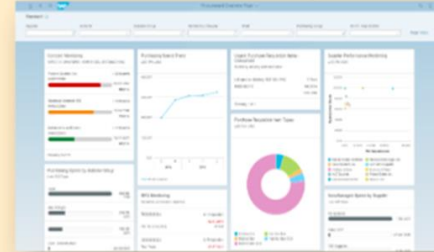
## Wat biedt het

### Smart Business KPIs



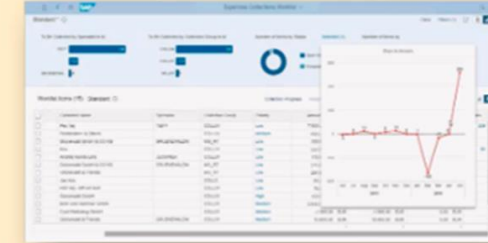
Smart Business KPIs deliver KPI monitoring on the Fiori Launchpad and drill-down capabilities into further analytical or transactional Fiori apps, save personal variants.

### Overview Pages



Get a consolidated view on a certain domain, e.g. Purchasing. Information presented in analytical tables and charts, take action in the same place or navigate to more details, save personal variants.

### Analytical List Pages



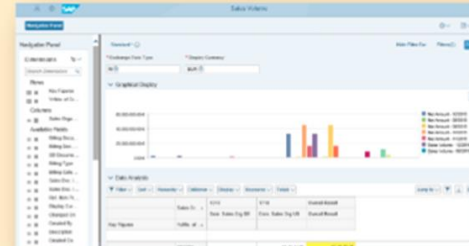
Generic approach to visualize and analyze data. Switch display from table to chart or a combined table-chart-display. Take action directly in the same app or navigate to other apps for more details and actions, save personal variants.

### Analysis Path Framework



Interactive drill-down to explore KPIs and their influencing factors by creating sequences of analytics steps which consist of charts or tables, save personal variants.

### Multidimensional Reports



Generic approach to analyze data and visualize results for multidimensional analysis. Switch the display from pivot-table to chart and to a combined table chart display, save personal variants.

### Dashboards



Optional, additional content. Stories/Dashboards are shipped via SAC Content Repository, analytical queries supplying the data are shipped with S/4HANA

# Agenda

---

1

## **Intro tot Jumbo en Analytics**

- Jumbo
- Iedereen is uniek... Of toch niet helemaal?
- Welke soorten vragen / oplossingen

2

## **Demo: Embedded Analytics**

- Jumbo Inbound Delivery

3

## **Hoe loopt project en wat kan je aanpassen?**

- Waarom zou je iets aanpassen?
- Hoe dan

4

# Hoe starten

**SAP Activate, zet standaard aan en bepaal dan of meer/anders nodig is**

The screenshot shows the SAP Fiori Apps Reference Library interface. At the top left, there is a home icon and the SAP logo. Below this, a navigation bar shows a back arrow, the text 'Apps (13296)', a checkmark icon, and a refresh icon. A search bar with the placeholder 'Search' and a magnifying glass icon is positioned below the navigation bar. A list of application categories is visible on the left side, including 'Partner', 'Chemical Inventory Reporting', 'Classify Products - Commodity Codes', 'Commitments and Actuals Analyses', and 'Compliance Information for Products' (which has a star icon). The main content area features a large blue heading: 'Welcome to the SAP Fiori Apps Reference Library!'. Below the heading, a paragraph reads: 'Explore, plan and implement SAP Fiori, the latest user experience from SAP including all relevant content for the SAP Fiori launchpad.'

The screenshot shows the filter panel for the SAP Fiori Apps Reference Library. At the top, there is a back arrow, the text 'Filter By: Line of Business', and a 'Reset' link. Below this, there is a search bar with the placeholder 'Search' and a magnifying glass icon. A list of filter options is displayed, each with a checkbox: 'Select All', 'Asset Management', 'Commerce', 'Finance', 'Human Resources', 'Manufacturing', 'Marketing', 'R&D/Engineering', and 'Sales'. To the left of this panel, a 'Select Filters' panel is partially visible, showing a 'Filter By' section with a 'Product Suite' filter set to '1' and a 'Reset' link.

# Wat is standaard al beschikbaar en wat hebben wij al toegevoegd

Start met standaard. Aanpassingen alleen indien kosten / baten dat toestaan.

## Purchasing: Delivery performance

- Ordered, Delivered and Open Quantity and Value
- By
  - Time (day -> year),
  - On Time (Delivery Date, actual vs requested)
  - Store, Vendor
  - Department/Material/Material Type
- Are deliveries from supplier to DC to store in time and in full?

## Stock: inventory position

- Stock Quantity and value
- By
  - Real time
  - DC, Store
  - Department/Material/Material Type
- What is available right now, at DC and in stores?

## Logistics : DC workload

- Deliveries, Picks and Tasks
- By
  - Real time
  - DC, Storage bin
  - Receiving store
- What is workload in warehouse, in-and outbound?

## CAR : deep dive onto cash transactions

- Transaction value, quantity, nr of items per transaction
- By
  - Time (day -> year)
  - Transaction
  - Store
  - Department/Material/Material Type
- How many transactions have we realized? What value and in what store/department?

## Sales/Margin : performance review

- P&L, balance sheet and drill down to sales, gross / net margin, cost, discounts, purchase / sales prices
- By
  - Time (day -> year)
  - Store
  - Department/Material/Material Type
- Profit Center
- Cost/Revenue details e.g. electricity/ personnel
- G/L Account
- What is performance by store, from revenue all the way to margin?

## Inventory Analytics and Control

- Sell thru and stock ageing in quantity and value
- By
  - Real time
  - DC, Store
  - Department/Material/Material Type
- How healthy is my stock? Enough sell thru and not too old stock?

# Van standaard naar eventuele aanpassingen



Example Purchase Analytics

*Read and use*  
**End user**

+

*+ Create reports & KPI's*  
**Key User**

+

*+ Adjust /combine sap views*  
**Developer**

Fit / GAP

Demo

Blijf bij Standard

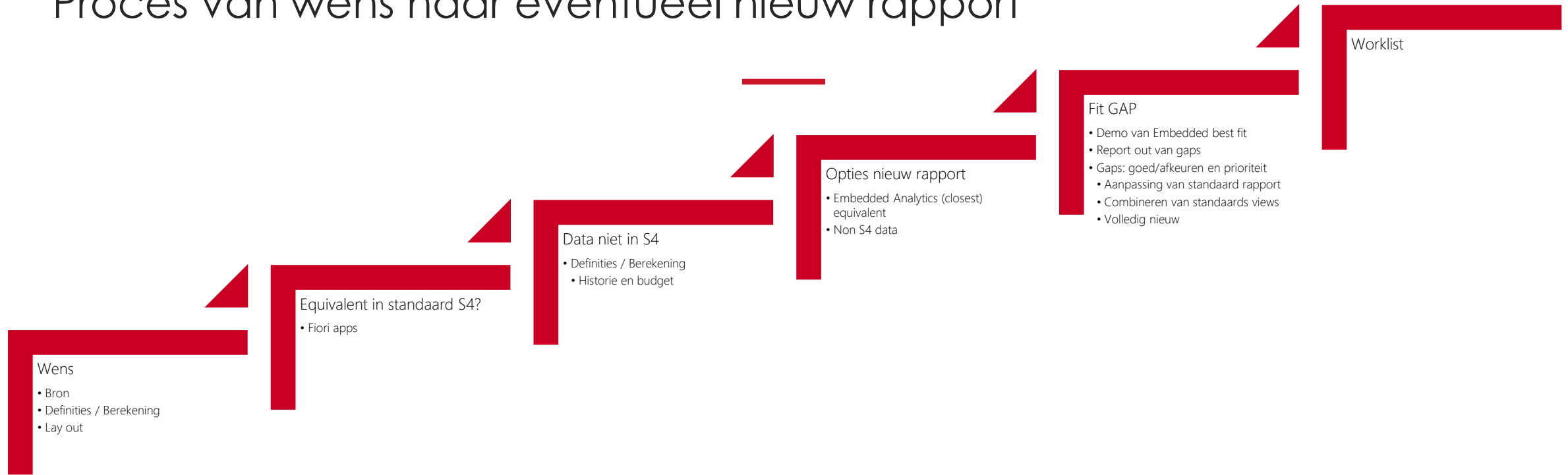
Cost / Benefit

Bouwen





# Proces van wens naar eventueel nieuw rapport



## BI consultant:

- Lead consultant. Requirements en fit/gap.
- Schattingen voor gaps.
- Combineren / bouwen views (die rapporten voeden, meer technisch en complex).

## Client

- Doen van requirements, testen en user training.
- Aanpassen van standaard reporten en maken van varianten.

# Agenda

---

1

## **Intro tot Jumbo en Analytics**

- Jumbo
- Iedereen is uniek... Of toch niet helemaal?
- Welke soorten vragen / oplossingen

2

## **Demo: Embedded Analytics**

- Jumbo Inbound Delivery

3

## **Hoe loopt project en wat kan je aanpassen?**

- Waarom zou je iets aanpassen?
- Hoe dan

4

**Q&A**



VERBINDT. VERSTERKT.

FOCUS  
ONLINE

8 T/M 12 NOVEMBER 2021

# Bedankt voor je deelname

Bekijk op [www.VNSGFocusOnline.nl](http://www.VNSGFocusOnline.nl)



**JUMBO**