



# Make Your Business Smarter with Enterprise AI

## VNSG Focus Online

Dr. Feiyu Xu  
SVP, Global Head of Artificial Intelligence at SAP  
November 10, 2021  
PUBLIC





**IMPLICIT**  
**KNOWLEDGE**



# Predator family tree



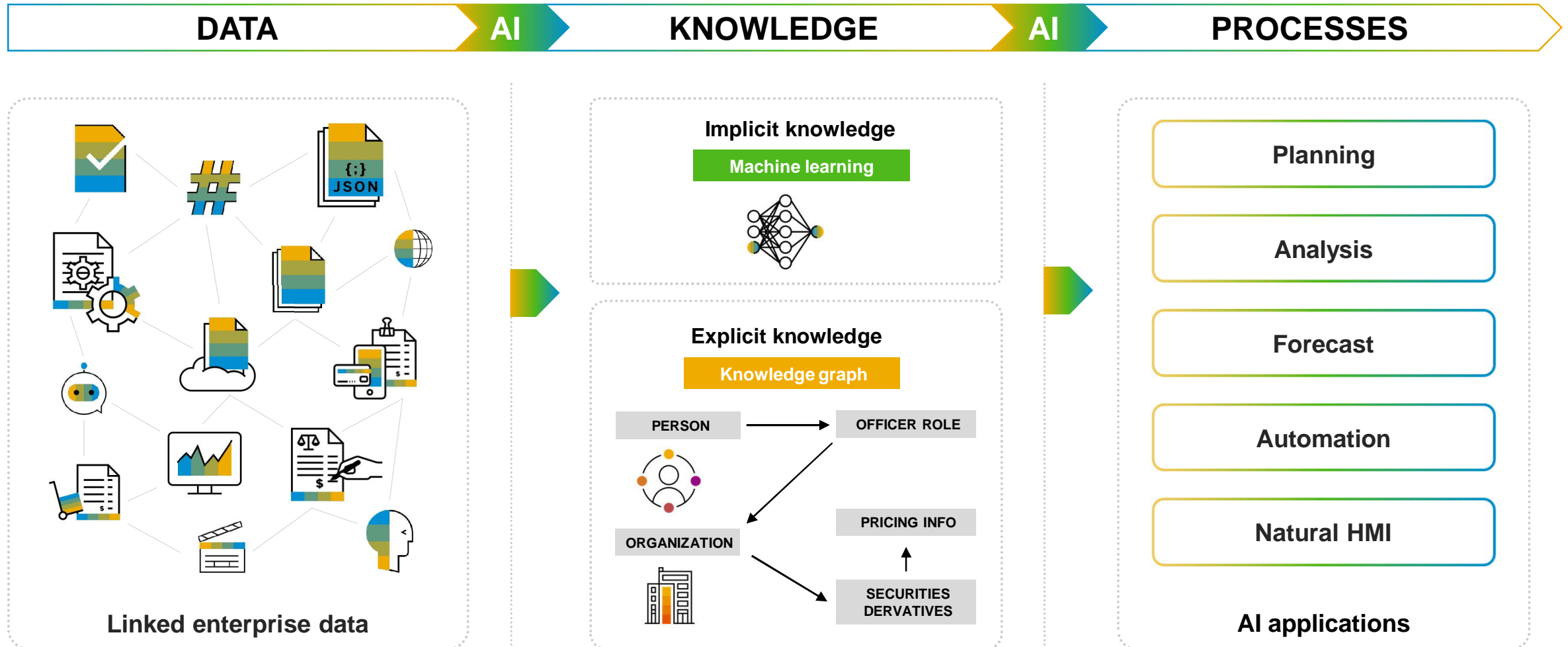
**EXPLICIT**  
**KNOWLEDGE**







# AI is the vehicle for SAP to realize the Intelligent Enterprise vision



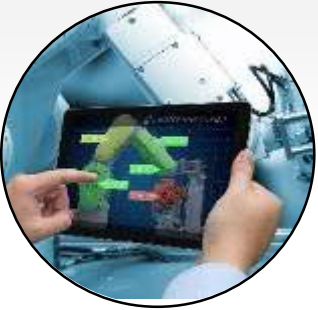


# AI IN INDUSTRIES





# SAP Enterprise AI creates value for customers by extending the reach of our software to data and patterns too complex for rules



## AUTOMATION

AI enables machines to **behave like humans**

**Example:** SAP Intelligent Intercompany Reconciliation learns from finance employees to automate intercompany matching of financial posting documents, reducing cumbersome effort to close the books

---



## NATURAL USER EXPERIENCE

AI facilitates **human-machine interaction**

**Examples:** SAP Conversational AI allows users to close tickets themselves and navigate complex processes via chat. Planned: SAP voice AI for users to speak to their systems.

---



## INSIGHTS, OPTIMIZATION, AND PREDICTIONS

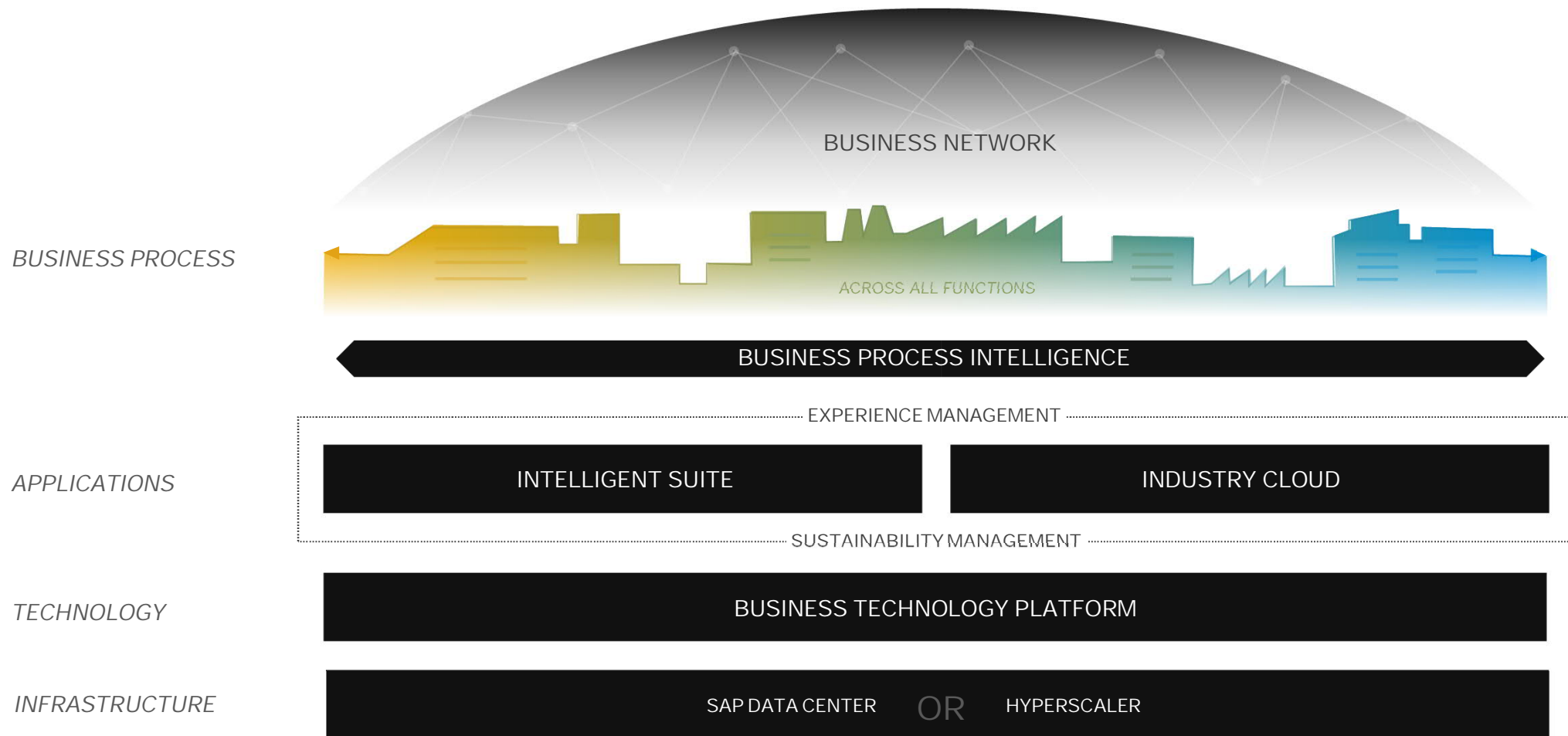
AI enhances **human decisions and cognition**

**Examples:** SAP SuccessFactors offers career path recommendations to employees. SAP Sales Cloud prioritizes sales leads. S/4HANA predicts and alerts slow or non-moving stock.



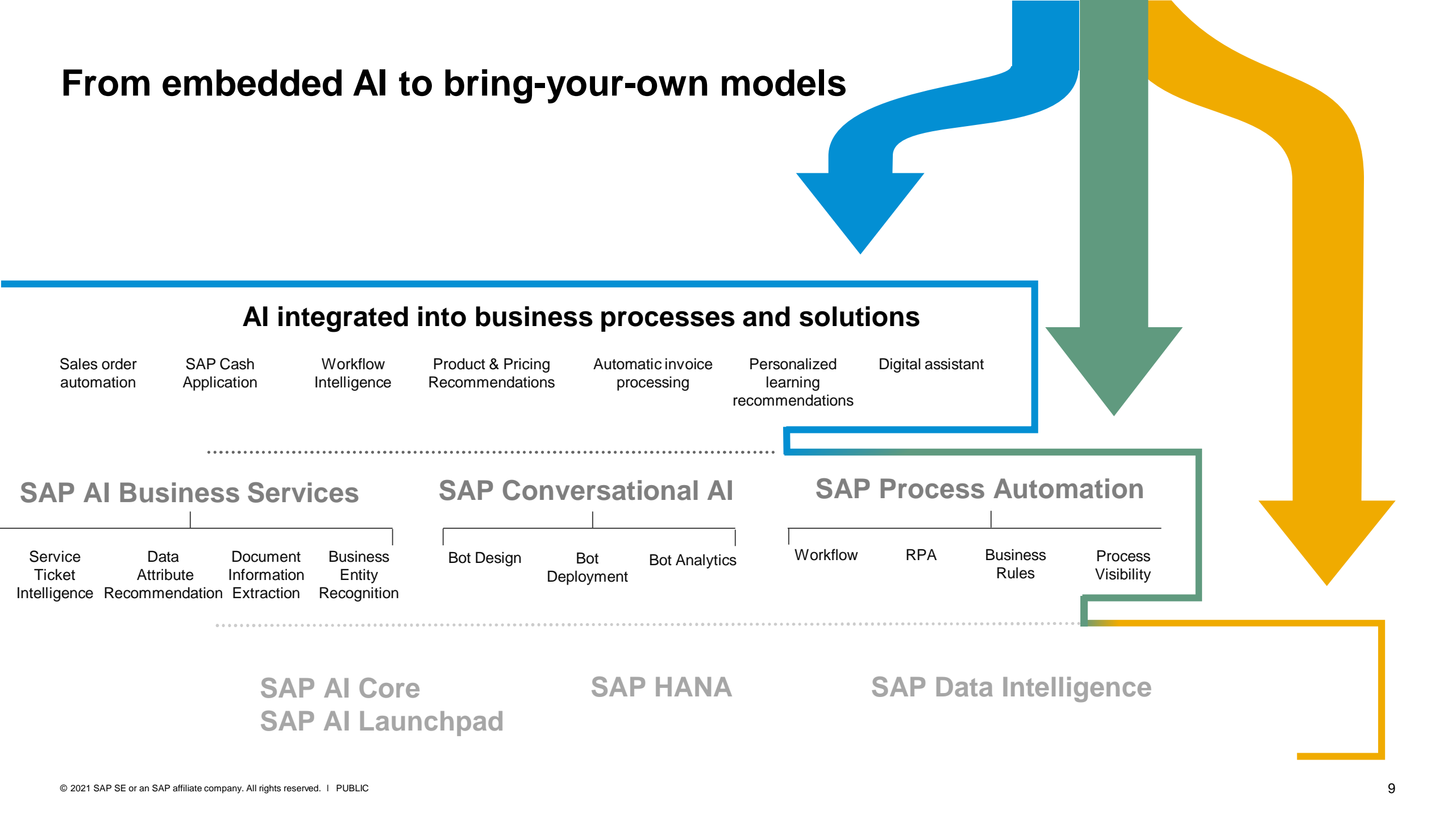
# INTELLIGENT ENTERPRISE

Evolved Vision.



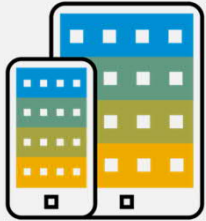


# From embedded AI to bring-your-own models





# Optimize Existing Processes with SAP AI Business Services



[SAP AI Business Services](#) provide strategic machine learning capabilities that help you automate and optimize processes while enriching the customer experience. These reusable services are available on SAP Business Technology Platform.

## Business document processing



### Business Entity Recognition

Detects and highlights named entities in unstructured text



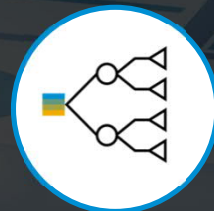
### Document Information Extraction

Automatically extracts information from unstructured documents



### Document Classification

Classifies unstructured documents



### Data Attribute Recommendation

Automates creation, maintenance, and management of structured data



### Invoice Object Recommendation

Recommends general ledger accounts and cost centers for invoices without order reference



### Service Ticket Intelligence

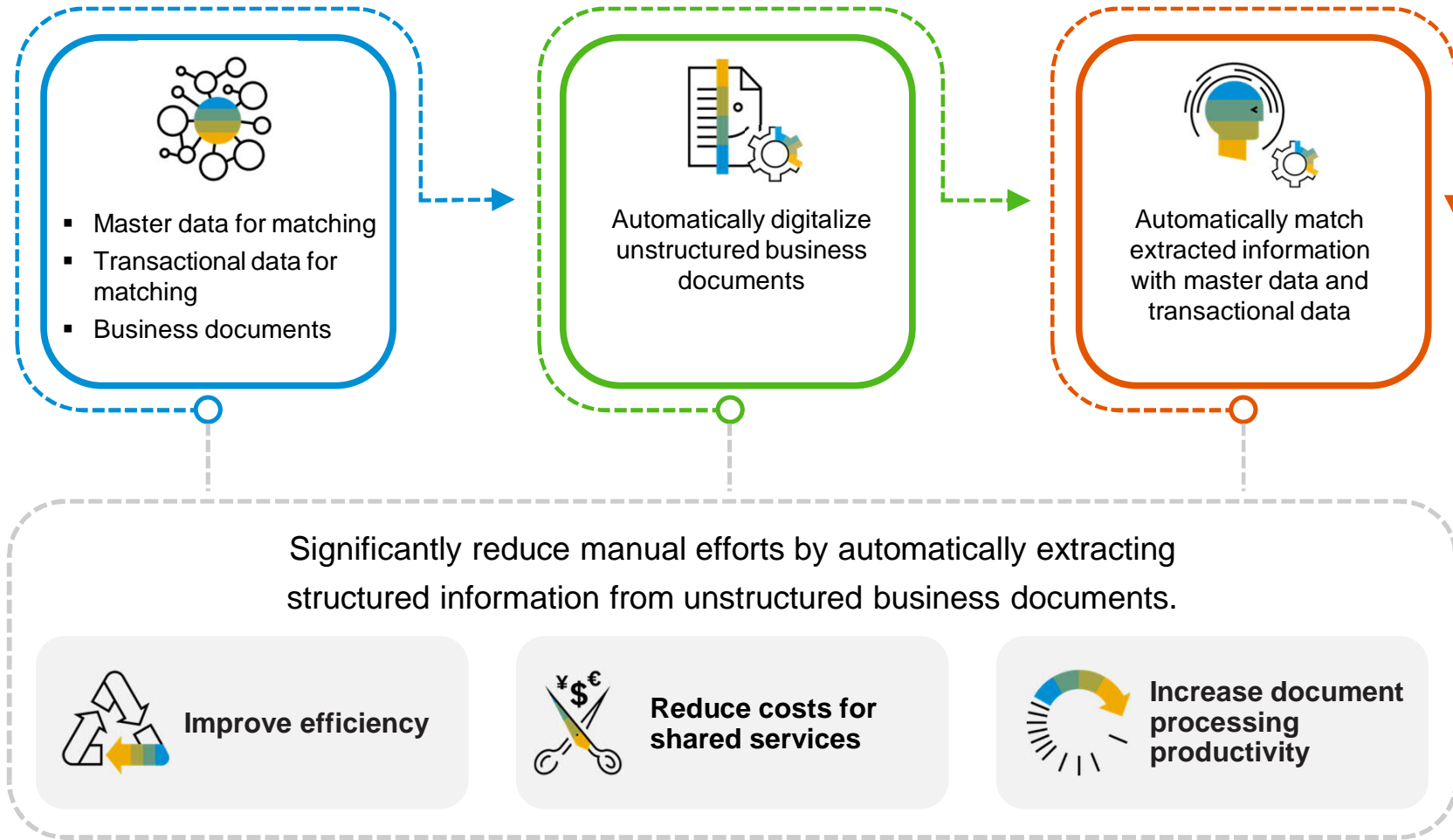
Classifies and recommends tickets automatically

Available via CPEA and SAP Store

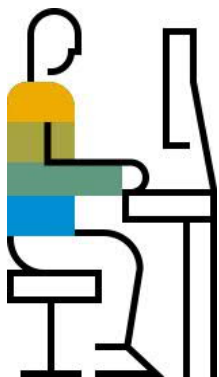


# Document Information Extraction

Extract structured information from unstructured documents



# Problem: Large Amounts of Incoming business documents



John,  
AP-Clerk

**Time2Go  
Company**

**Your Company**  
M. Max Apfel-Birne  
Birnenstr. 24  
54321 Birnenstadt

**Contact:**  
Time2Go Company  
Am Apfelbau 13  
12345 Apfelstadt  
**Tel.** +1134/43215  
**Date:** 01.11.2013  
**Invoice n°:** 123456  
**Customer n°:** 0987

**Invoice**

Amount	Unit	Object	Price
1400	Pc.	Apples	\$1,684.-
120	Kg	Nuts	\$2.000
<b>Total Amount</b>			<b>\$ 3,684.-</b>

19% taxes incl.

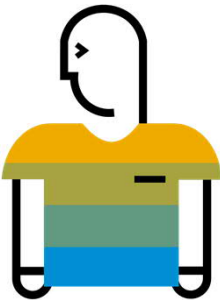
To pay until 11.12.2013

Time2Go Company  
Am Apfelbau 13  
12345 Apfelstadt

DE12 123412341234  
Apfelbank  
XYZ1234ZXY

Company	Time2Go Company
Supplier ID	009753
Invoice N°	123456
Amount	3684.00
Currency	USD
Date	2013-11-01
Position 1	Amount: 1400 Unit: PC Amount: 1684.00 Description: Apples
Position 2	Amount: 120 Unit: KG Amount: 2000.00 Description: Nuts

Enrichment  
happens  
manually

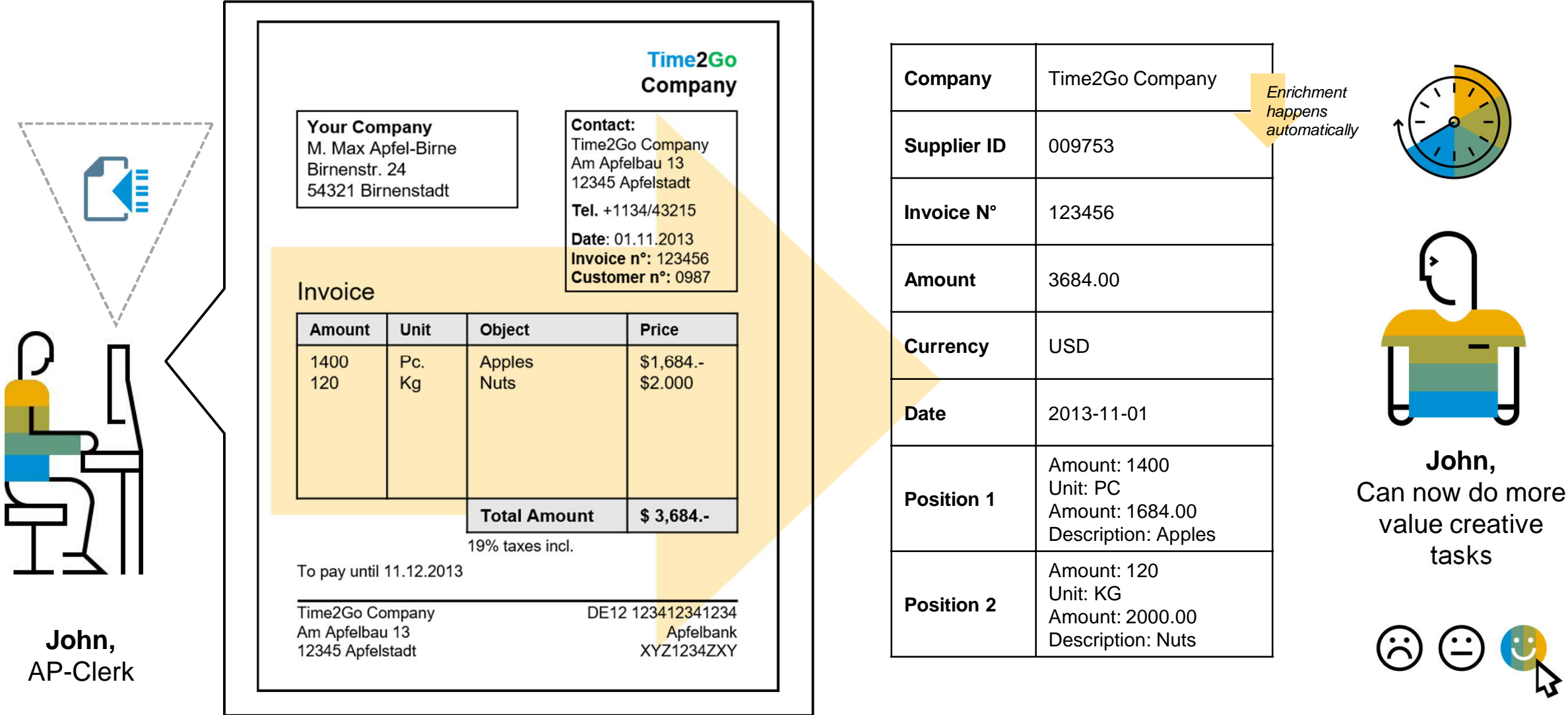


John,  
spends much time  
on searching and  
matching the right  
information



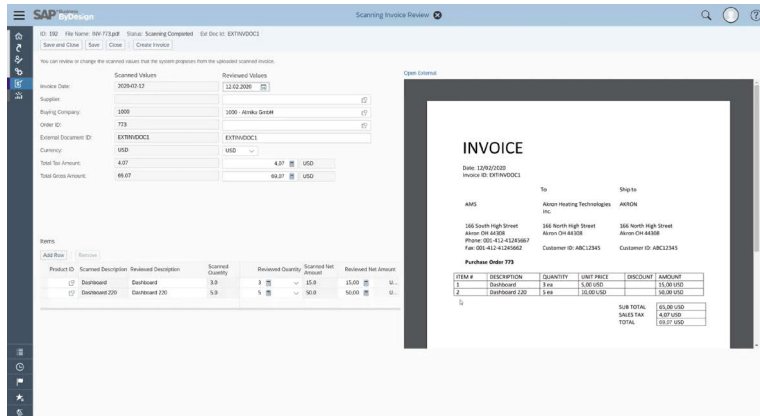


# Solution: Document Information Extraction



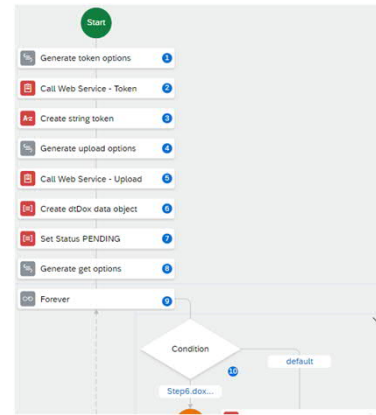
# Consumption options

## Standard Integration (Integrated into SAP Business Applications)



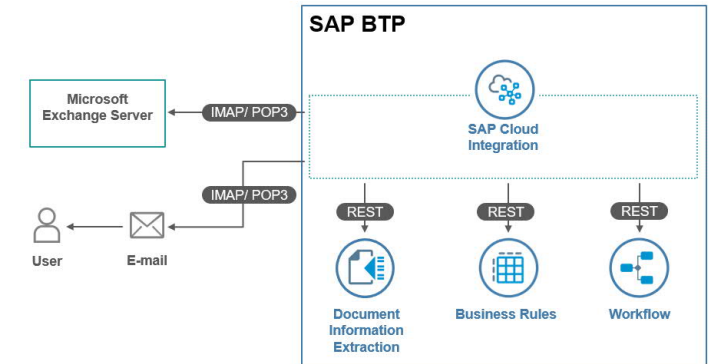
- [SAP Concur Invoice Capture](#)
- [SAP CashApp](#) (Payment Advice Extraction)
- [SAP Business ByDesign](#) ([Intelligent Invoice Scanning](#))
- [SAP Business ByDesign](#) (Mobile Expense Scanning)
- [SAP Business One 10.0](#) (Intelligent Invoice Scanning)
- [SAP S/4HANA Cloud 2011](#) (Sales Order Automation)
- [SAP S/4HANA Document Management System](#) (Classification)
- [SAP Shared Service Framework for Finance](#) (Email Processing)

## Custom Automation Scenarios (SAP Intelligent RPA)



- **!!NEW!!**  
[Smart Document Extraction using SAP Intelligent RPA](#) (2109 release)
- [Combining Document Information Extraction and SAP Intelligent RPA 1.0](#), incl. [Bot Template](#), [webinar](#)
- [Integrate Document Information Extraction with SAP Intelligent RPA 2.0](#), incl. [Bot Template](#)
- [Automate Processing of Email Attachments using ML and Bots with SAP Intelligent RPA 2.0](#), incl. [Customer Reference](#)

## Full Integration Flexibility (SAP Business Technology Platform)



- [Handling Incoming Sales Orders with Business Technology Platform](#)
- Integration packages for SAP Cloud Integration on SAP API Business Hub:
  - ✓ [Enterprise E-mail Inbox integration with Document Information Extraction](#) (incl. [blog](#))
  - ✓ [Enterprise E-mail Inbox integration with Business Entity Recognition](#)
- [Manage Invoices without POs using Document Information Extraction and SAP Workflow Management](#)



# Engagement Options



## Ready to Use

- Available as AI Business Service via **Enterprise Agreement** on [SAP BTP](#)
- As integrated functionality in **Concur, Business ByDesign, S/4HANA, SAP Cash Application**
- Use in conjunction with **Intelligent Robotic Process Automation**

[SAP HELP  
PORTAL](#)



## Ready to Test

- Test the service on your own business documents with **SAP BTP Trial**
- Join **beta testing programs** of new features like the UI Application and template-based processing
- Engage with other SAP products in testing the **embedded** functionalities

[GET STARTED  
MISSIONS](#)



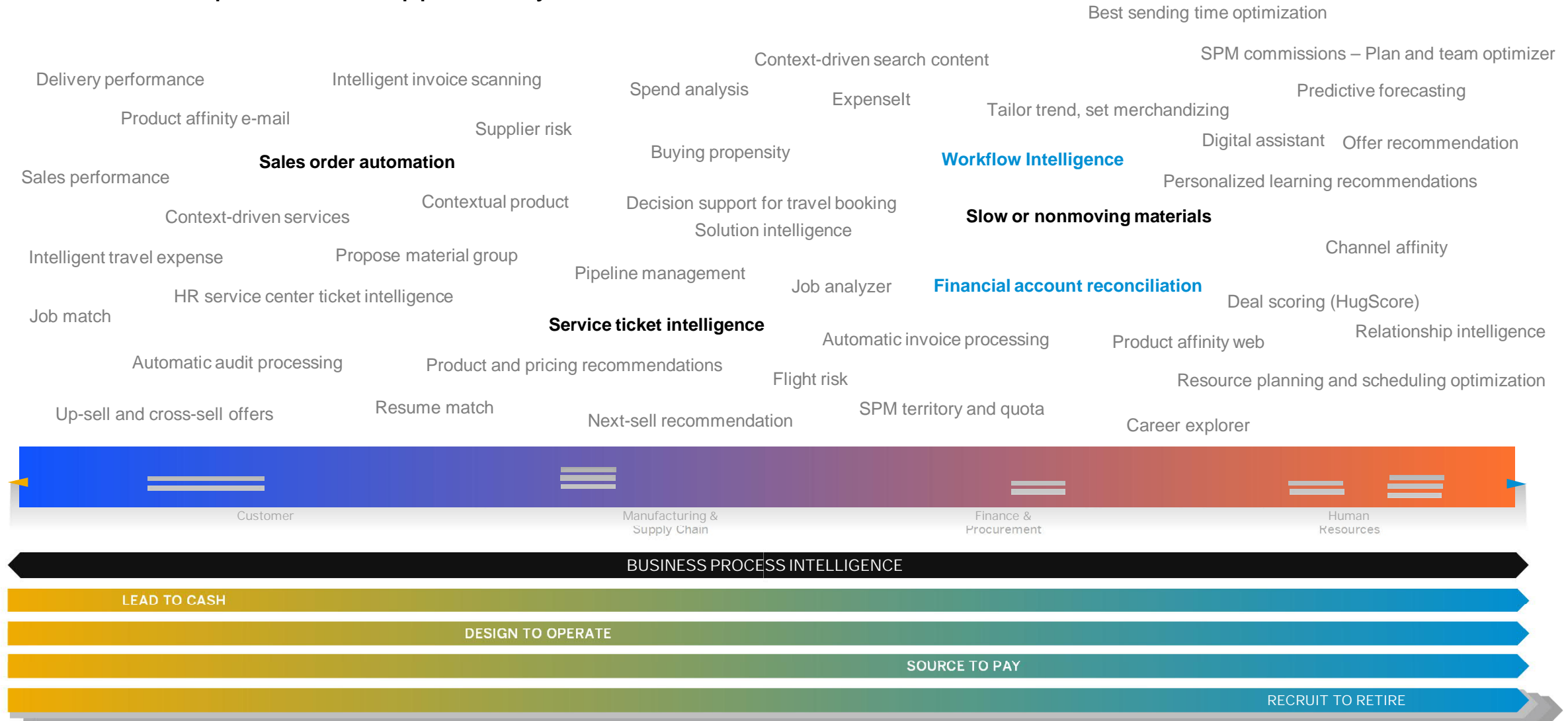
## Ready to Co-Innovate

- **Co-Innovation for new features**
- Work together on support of additional document types and enhancing the functional scope of the offering
- Recognition of innovative opportunities
- Quick **implementation of ideas** in real business cases

[INFLUENCE SAP](#)

# Enterprise Artificial Intelligence

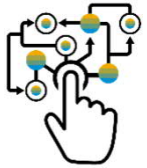
## AI in business processes supported by SAP software





# Enterprise artificial intelligence

## Why SAP?



Unified and integrated **enterprise-grade AI lifecycle management** and **operations**



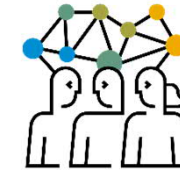
AI-tailored for **business problems**



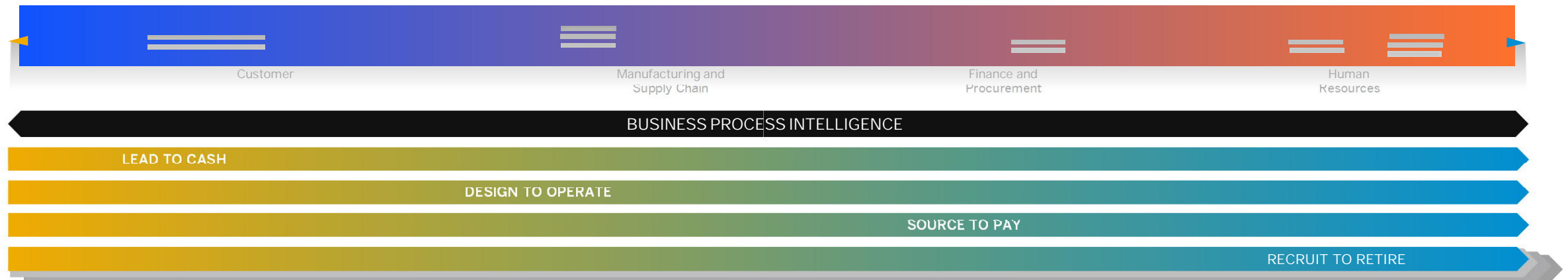
**Enterprise-readiness**



**Responsible AI**



**AI for everyone**  
through **SAP BTP**



# Key Takeaways

**Artificial intelligence** is a **cornerstone** of the **intelligent enterprise**.

We offer a **true evolution** of **enterprise AI** – **natively embedded, trustworthy, and tailored for your business needs**.

**SAP AI Tools and Technology** can **accelerate the implementation** of your intelligent enterprise scenario.



# Thank you.

Contact information:

**Dr. Feiyu Xu**

SVP, Global Head of AI at SAP

[fei.yu.xu@sap.com](mailto:fei.yu.xu@sap.com)

Follow us



[www.sap.com/contactsap](http://www.sap.com/contactsap)

© 2021 SAP SE or an SAP affiliate company. All rights reserved.

No part of this publication may be reproduced or transmitted in any form or for any purpose without the express permission of SAP SE or an SAP affiliate company.

The information contained herein may be changed without prior notice. Some software products marketed by SAP SE and its distributors contain proprietary software components of other software vendors. National product specifications may vary.

These materials are provided by SAP SE or an SAP affiliate company for informational purposes only, without representation or warranty of any kind, and SAP or its affiliated companies shall not be liable for errors or omissions with respect to the materials. The only warranties for SAP or SAP affiliate company products and services are those that are set forth in the express warranty statements accompanying such products and services, if any. Nothing herein should be construed as constituting an additional warranty.

In particular, SAP SE or its affiliated companies have no obligation to pursue any course of business outlined in this document or any related presentation, or to develop or release any functionality mentioned therein. This document, or any related presentation, and SAP SE's or its affiliated companies' strategy and possible future developments, products, and/or platforms, directions, and functionality are all subject to change and may be changed by SAP SE or its affiliated companies at any time for any reason without notice. The information in this document is not a commitment, promise, or legal obligation to deliver any material, code, or functionality. All forward-looking statements are subject to various risks and uncertainties that could cause actual results to differ materially from expectations. Readers are cautioned not to place undue reliance on these forward-looking statements, and they should not be relied upon in making purchasing decisions.

SAP and other SAP products and services mentioned herein as well as their respective logos are trademarks or registered trademarks of SAP SE (or an SAP affiliate company) in Germany and other countries. All other product and service names mentioned are the trademarks of their respective companies.

See [www.sap.com/trademark](http://www.sap.com/trademark) for additional trademark information and notices.