



**FOCUS
ONLINE**

8 T/M 12 NOVEMBER 2021

Welkom

Perfectioneer finance met CPM op SAP HANA

Artie Jasperse, Partner Succes Manager - SAP
Gerard van Rooijen, Senior Pre-Sales consultant –
Wolters Kluwer | CCH Tagetik



Wolters Kluwer

Intro speakers



Artie Jasperse

Partner Success Manager,
SAP



Gerard van Rooijen

Senior Pre-Sales consultant,
Wolters Kluwer CCH Tagetik

Agenda



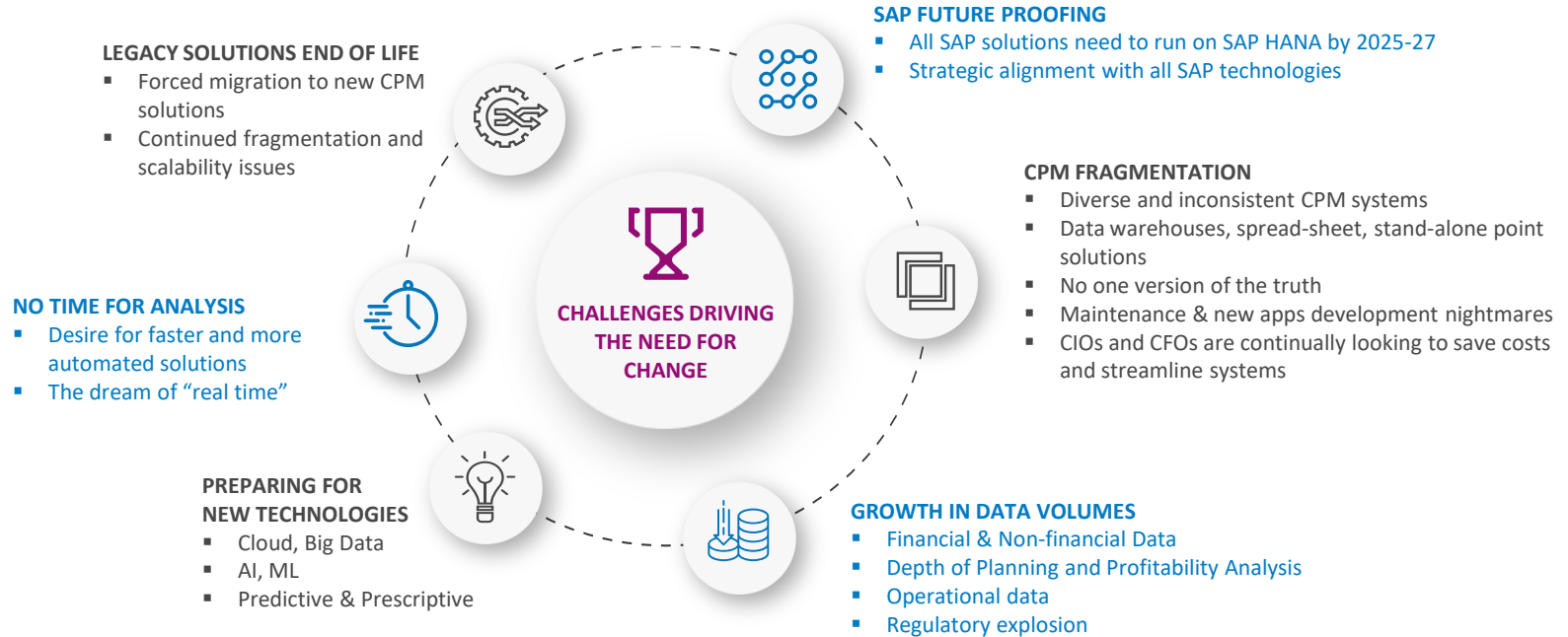
-
- **Trends and challenges for Finance & IT**
 - **Our strategic partnership:**
 - The value of the SAP technology inside CCH Tagetik
 - The value of the strategic SAP Partnership
 - The importance of the SAP Business Technology Platform and SAP HANA
 - **The combined offering dedicated to SAP users: CCH Tagetik on SAP HANA and the benefits**
 - **Customer success stories: sharing real customer stories**
 - **Q&A**

Trends and challenges

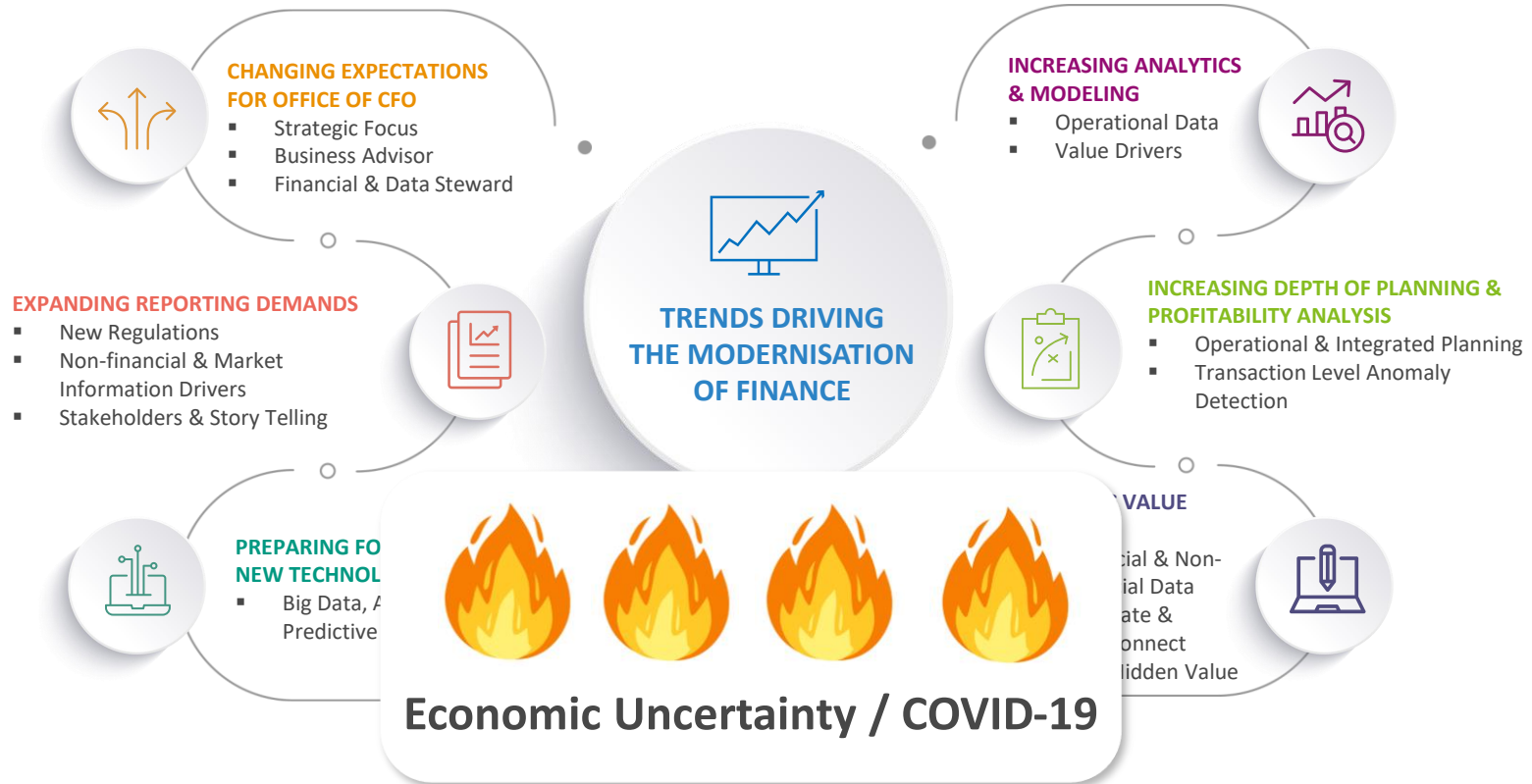


Wolters Kluwer

The Challenges for Finance & IT

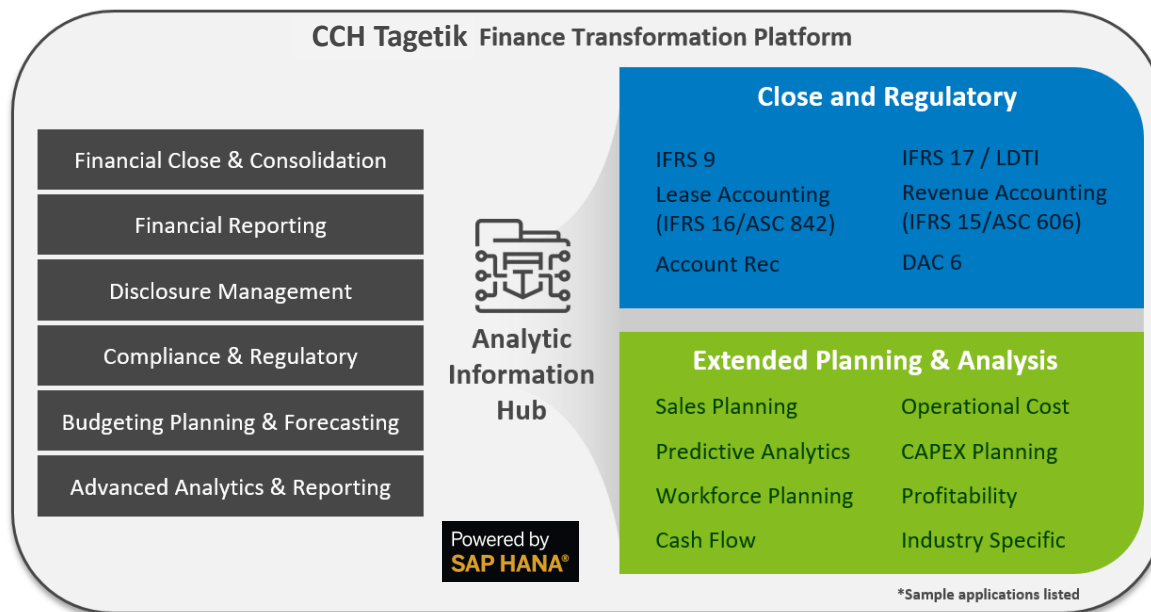


Trends in the Office of the CFO



CCH Tagetik Finance Transformation Platform on SAP HANA

The most comprehensive and data-driven unified platform in the market



>> Enabling the CFOs and CIOs to become the trusted advisors of the organisation <<

CCH Targeting on
SAP HANA –
Our strategic
partnership



CCH Tagetik on SAP HANA



8 Years+ (2013 to 2021)



Safeguard customers huge investments in SAP



CPM Issues and the SAP HANA solution *performances, latency, complex calculations, massive volumes, real time pressures, predictive*



Strategic Partnership to drive the CPM Revolution



1st Certified CPM Vendor on HANA and state of the art developments since



By 2025-27 all SAP customers systems replaced by HANA



Customers & partners opportunity to streamline and modernise finance in the office of the CFO

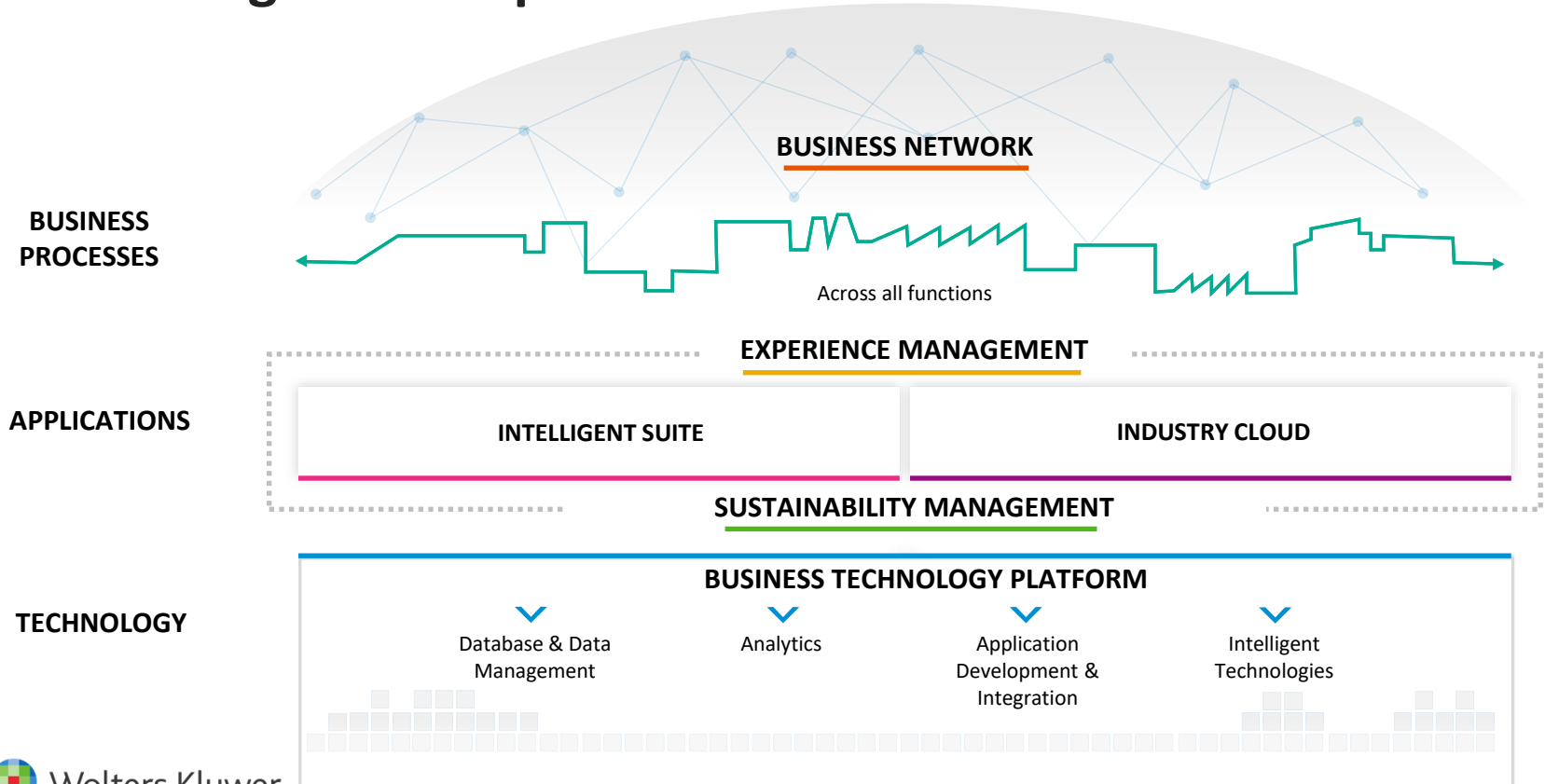


Perfect Fit Application & Technology Unification



“Partnering CCH Tagetik software with SAP HANA can revolutionise the market, ultimately bringing real-time financial information and analytics to the CFO.”
Bani Brandolini, VP Strategic Partners at Wolters Kluwer, CCH Tagetik

The Intelligent Enterprise



Accelerate with simplicity

SAP HANA: The all-in-one, in memory-first data platform to develop and run all applications



Support all data

Multi-model support to natively manage structured and unstructured data

Run all workloads

In-memory-first architecture to combine advanced analytics on live data transactions

Connect all data at speed

Memory-powered data virtualisation/integration for real-time performance on trusted data



Manage data at scale

Intelligent data tiering and advanced compression for cost-effective and unlimited scale

Deliver 24/7 secure data access

Advanced HA/DR, data security and privacy for enterprise-class reliability

Simplify app development and management

Unified tool sets for all tasks, simpler app architectures and lower TCO

Simpler application architectures and IT landscapes **for faster-time to results and lower costs**

Customers Agree

SAP is a Leader for Database and Data Management

Corporate Fact Sheet

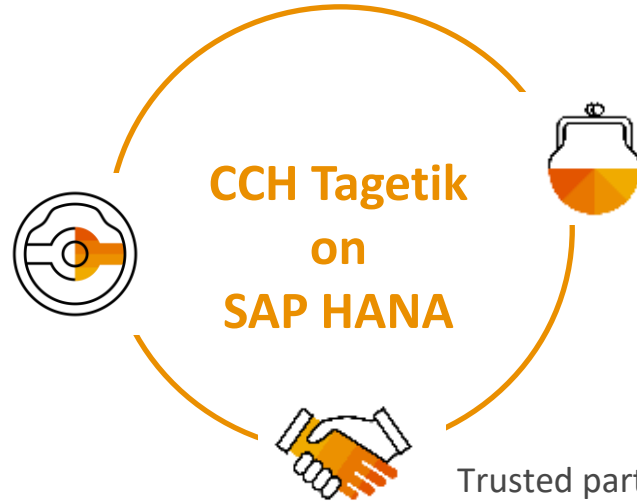
[SAP Corporate Fact Sheet >54,000 customers](#)

Lidl | Heidelberg University Hospital | Siemens | VMware | McLaren | Cisco | Swiss Re | Women's | Tennis Association | Lenovo | HPE | Mercy Health | NTT | Accenture | Nestlé | City of Cape Town | Horizon Pharma | BASF | Zalando | Nissan Motor | Vodafone | Munich Re | Airbus DS | PayPal | Thomson Reuters | E.ON | Saudi Aramco | Gendarmerie Nationale de France | Indus Motor | Camposol | Ache | City of Nanjing | ARI | Swisscom | TSG 1899 Hoffenheim | Mars International | Tata Power | Snow Peak | Cirque du Soleil Inc | Evonik | FC Bayern München | Surgutneftegas | Lidl | Heidelberg University Hospital | Siemens | VMware | McLaren | Cisco | Swiss Re | Women's | Tennis Association | Lenovo | HPE | Mercy Health | NTT | Accenture | Nestlé | City of Cape Town | Horizon Pharma | BASF | Zalando | Nissan Motor | Vodafone | Munich Re | Airbus DS | PayPal | Reuters | E.ON | Saudi Aramco | Gendarmerie Nationale de France | Indus Motor | Camposol | Aché | City of Nanjing | ARI | Swisscom | TSG 1899 Hoffenheim | Mars International | Tata Power | Snow Peak | Cirque du Soleil Inc | Evonik | FC Bayern München | Surgutneftegas | Medtronic | State of Indiana | adidas

More than
54,000
SAP HANA
customers

SAP and CCH Tagetik: Putting it all together

ONE vendor experience:
CCH Tagetik is your single
point of contact during and
after the sale.



SAP HANA & SAP Analytics Cloud
licenses are bundled with
CCH Tagetik for product & cost
optimisation and TCO advantage.

Trusted partnership with



Up to **70%**
Faster report generation*

Up to **50%**
Reduction in consolidation time*

Up to **40%**
Reduction in allocation time*

Up to **30%**
Reduction in integration costs

Committed Partnership with SAP



CCH Tagetik joined SAP's 3rd party and Partner Program

- SAP OEM Partner delivers CCH Tagetik application including **the SAP OEM HANA software license** (SAP Label or White label), deployed On-premise and or as Application Service Provider (ASP)
- **SAP Integration and Certification Council (ICC)** is a "co-innovation" program where SAP can support partners in developing new applications or integrating its own application with SAP.
- CCH Tagetik on SAP HANA is listed and setup for transactions on the **SAP Store**.



CCH Tagetik is part of SAP HANA OEM Council

- The council helps steer SAP HANA development and promotes a two-way communication between SAP and strategic partners.

CCH Tagetik is part of SAP Next Generation Partner Advisory Council

- The council helps joint innovation by SAP and its partners in order to maximise future value to customers.



Regular Communication for Development Updates

- Regular monthly update on development topics
- CCH Tagetik roadmap includes more SAP integration



Co-Marketing Activities

- CCH Tagetik & SAP Success Study
- Co-advertising on websites
- Conferences and joint webinars



Our combined
solution:
CCH Tagetik on
SAP HANA



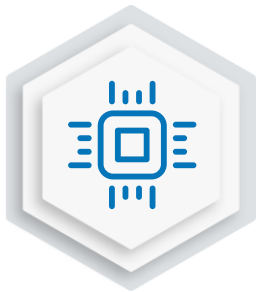
Meet the SAP HANA Revolution

A radical new approach required in order to deliver more information faster



THREE key issues

1. **Latency Relational / OLAP** derived from the need to generate OLAP cubes for multi-dimensional analysis (for example, SQL Analysis Services)
2. **Speed is never enough** especially on complex financial processes like budgeting with **heavy duty cascade allocations, complex consolidations** (currency conversion, intercompany matching & eliminations), **large simulations, granular analytics** by product, customer etc. and **semi-transactional applications** (like CCH Tagetik **Analytic Information Hub** with individual contracts, product details, employees etc.)
3. **Need to access large amounts of data / business drivers** for tools for **more in-depth Analytics** today and in the future leverage AI, ML for Predictive and Prescriptive Analytics



SAP HANA unique technology architecture

- **UNIFIED RELATIONAL & “OLAP”** eliminating latency altogether
- **ALL IN MEMORY** avoiding constant read / write to disc
- **MASSIVE PARALLEL PROCESSING** capabilities and hardware horse-power
- **COMPLETE AVAILABILITY OF PRE-PACKAGED PREDICTIVE ALGORITHMS (PALs)**

CCH Tagetik on SAP HANA is revolutionizing the market with Real Time Financial & Analytics to the CFO!

SAP Centric Solution

CCH Tagetik running on SAP HANA & SAP Analytics Cloud

1st CPM VENDOR
CERTIFIED

Powered by
SAP HANA®

Optimised platform and
connectors for SAP HANA

HIGH PERFORMANCE
CPM



No latency with
CCH Tagetik on SAP HANA
In-Memory platform

REAL-TIME DATA
ACCESS



Via SAP Smart Data
Integration (SDI) for real-
time access and Smart
Data Access (SDA) adds
drill-thru

REAL-TIME REPORTING
& ANALYTICS



CCH Tagetik easily
creates views for SAP BW
and live views for SAP
Analytics Cloud / SAP
Analysis for Office

PREDICTIVE &
PRESCRIPTIVE ANALYTICS



Integration with
Predictive Analytics
Library (PAL) and
Automated Predictive
Library (APL)

Leverages the SAP HANA Product Stack!

Value to You

CCH Tagetik is the trusted SAP Centric solution for CPM that's SAP HANA ready!

Powered by
SAP HANA®

FAST & EXTENSIBLE CPM PLATFORM



LEVERAGE YOUR INVESTMENT IN SAP



PROVEN IMPLEMENTATION EXPERIENCE



CO-INNOVATOR RELATIONSHIP WITH SAP



FLEXIBLE ON-PREMISE AND CLOUD DEPLOYMENTS



LONG-TERM ROADMAP



READY FOR THE FUTURE NOW!

CCH Tagetik with SAP Analytics Cloud

Business Intelligence and
Augmented Analytics for
CCH Tagetik users

SAP Analytics Cloud for
Business Intelligence,
Predictive edition bundled
with the CCH Tagetik application



Wolters Kluwer

SAP HANA Platform and SAP Analytics Cloud

SAP Analytics Cloud

Business Intelligence



BI



Discover



Analyse



Act

Augmented Analytics



Smart Predict



Timeseries Forecasting



Smart Discovery



Search to Insight



Smart Insights

Prepare, visualise,
and uncover

Data can stay within the
Corporate Firewall

Next level Business
Intelligence

SAP HANA PLATFORM

APPLICATION DEVELOPMENT



Web Server



JavaScript



Fiori UX



Graphic Modeler



Application Lifecycle Management

ADVANCED ANALYTICAL PROCESSING



Spatial



Graph



Predictive



Search



Text Analytics



Streaming Analytics



Series Data



Business Functions

DATA INTEGRATION & QUALITY



Data Virtualization



ELT & Replication



Data Quality



Hadoop & Spark Integration



Remote Data Sync

DATABASE MANAGEMENT



Columnar OLTP+OLAP



Multi-Core & Parallelization



Advanced Compression



Multi-tenancy



Multi-Tier Storage



Data Modeling



Openness



Admin & Security



High Availability & Disaster Recovery

All-in-one,
in-memory-first

HTAP with broadest
advanced analytics

Secure & future-ready

Hybrid and multicloud

CCH Tagetik with SAP Analytics Cloud

Business Intelligence and Augmented Analytics

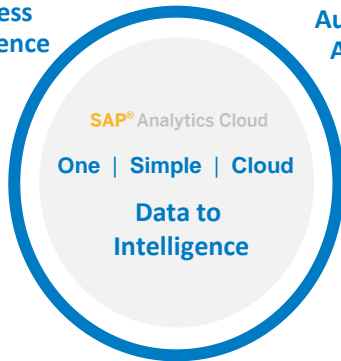
One analytics solution to bring together **BI** and **Predictive** in the cloud with **embedded intelligence**.

Augmented analytics deliver insights with embedded machine learning – no data scientist required.

Get insights wherever you are with analytics available on any device.

Business Intelligence

Augmented Analytics



Embedded Intelligence

Smart Discovery

Search to Insight

Smart Insights

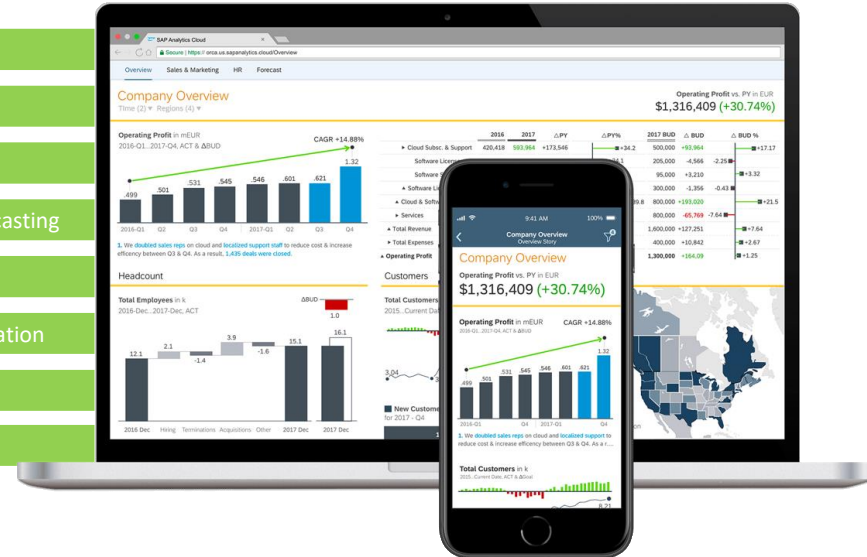
Time Series Forecasting

Smart Grouping

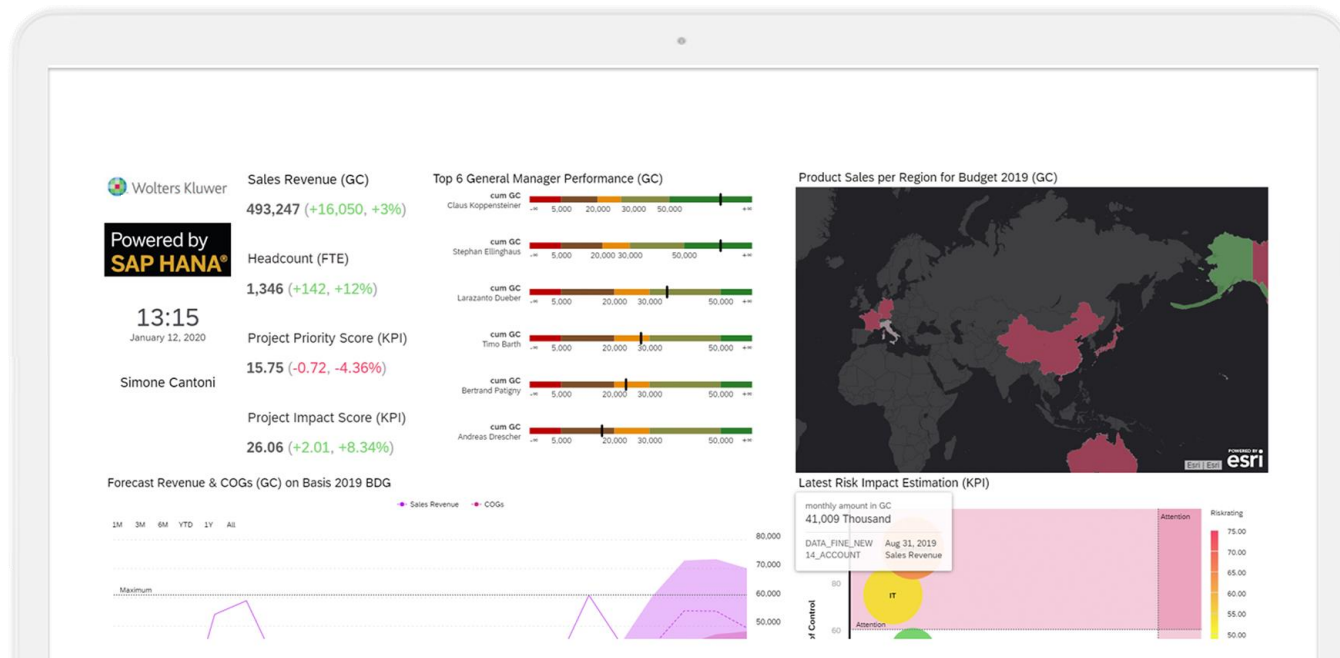
Smart Transformation

R-Visualisations

Smart Predict



CCH Tagetik on SAP HANA & SAC – real time augmented analytics



Client success stories



CCH Tagetik & SAP support best-in-class implementations

Fast Growing Customer Adoption and Accelerating Success



Global Presence

Customers in 3 continents, 9 markets
New and existing customers
Fortune 500 and SMEs



50% to 1000% Better Performances

Depending on Process, Size, Complexity



SAP Store

SAP customers, partners, staff



Large strategic wins on SAP HANA



Large Manufacturer

Milwaukee Tool chose CCH Tagetik on SAP HANA to **drive faster performances** for its complex allocation process, profitability analysis and easy to use ad-hoc reporting.

Large Reinsurance Company

Swiss Re is the world's second largest reinsurer. Choice for CCH Tagetik based on having the best solution in terms of **depth and breadth and technology with CCH Tagetik on SAP HANA and powered by the Analytic Information Hub.**

Global Tobacco Company

Philip Morris is the world's leading tobacco company. The CCH Tagetik architecture in combination with HANA and the platform approach were perceived by the customer as compelling differentiators.



Pernod Ricard, the #2 wine & spirits group is undertaking a global digital transformation. Not an SAP customer. *"We believe that the finance function needs to become faster, more flexible and forward looking."* The CCH Tagetik Finance Transformation Platform on SAP HANA Technology will leverage the power of **scaled calculations and benefit from a library of predictive analytics.**

Geo- intelligence Company

Fugro is the world's leading independent provider of geo-intelligence. Chose CCH Tagetik on SAP HANA on Cloud to **replace Hyperion HFM to transform to a finance-owned unified solution for close, planning, reporting, IFRS 16 and predictive analytics.**

Global Financial Service Provider



Rabobank



CHALLENGES

- Conducting Finance Modernisation Program with 3 key elements: Digital Dashboarding, Predictive Forecasting and Advanced Analytics
- Multiple systems should be replaced by one solution for Budgeting, Planning and Forecasting
- Rolling Forecast, Driver-based modelling and scenario analysis.
- Agile workflow and a complete audit trail from start to finish
- Powerful Allocation Functionality
- Looking to improve efficiency and gain control
- SAP technology as corporate standards



DIFFERENTIATORS

- Single trusted data-point model for internal and external reporting
- **Unified solution for Planning, Consolidation & Reporting on SAP HANA on Cloud**
- Support of the global “move to cloud” strategy
- SAP HANA is the target platform within Rabobank
- **Long-term Roadmap for both CCH Tagetik Finance Transformation Platform & Integration with SAP products**
- **Integration with future S/4 HANA**



ACHIEVEMENTS

- Reduction of Costs
- Standardised solution for Budgeting, Planning and Forecasting and Legal Consolidation across the divisions and in the group
- Streamlined processes, faster planning and reporting cycle times, increased time and ability for analytics
- Benefits of the Cloud with scalability, decreased time to market and reduced complexity
- Better integration with other SAP HANA based system by leveraging the platform capabilities.

Project Planning and Dashboarding for the Automotive Industry at Daimler

DAIMLER



CHALLENGES

- R&D and development of new models distributed across the globe
- Planning process and calculation methods not aligned and error prone (locally developed individual EXCEL based applications)
- Decision-making on board level (which projects should be realised, which are to drop?) severely compromised due to non comparable data



DIFFERENTIATORS

- **SAP and Microsoft corporate standards. Phased approach migrating dozens of CPM and data warehouse apps to CCH Tagetik on SAP HANA.**
- Phase one: started with a feasibility study by using CCH Tagetik to build a prototype during joint workshops in APAC, North America and Europe. **CCH Tagetik's flexibility and functional richness** was essential for this approach
- Phase two: a centralised **CCH Tagetik application with worldwide access based on SAP HANA** database was built in Germany.
- The third phase was a dashboard built with **PowerBI** on top of calculation views enhanced with simulation capabilities to be used as decision support application at board level



ACHIEVEMENTS

- High level of acceptance through collaborative development
- Harmonised calculation methods (e.g. for pay back periods) and sensitivity analysis (what if) allow for better decision making
- Constant improvement process of application with instant impact on all geographies (all use one common application)

Migration to the CCH Tagetik Enterprise Cloud and SAP HANA platform



CHALLENGES

- **Metro Group** is a long-term CCH Tagetik customer with legal **consolidation, forecasting, budgeting & plan consolidation** activated in the CCH Tagetik platform
- Strong integration with **SAP BW**, which is the central data warehouse for finance and controlling
- The “Common System” is the outcome of the standardisation and strict harmonisation of the internal and external reporting according to IFRS.
- Strong SAP IT strategy



DIFFERENTIATORS

- Migration was simulated in a test environment to measure performance improvement of the SAP HANA platform
- **Very good performance of CCH Tagetik on HANA and on Cloud infrastructure**
- Successful IT security and vulnerability check
- SAP HANA as future platform for ERP systems, SAP BW and CCH Tagetik



ACHIEVEMENTS

- Migration currently on plan, scheduled for 2 months
- Go Live on CCH Tagetik Enterprise Cloud powered by SAP HANA
- Fast migration process
- New Analytical platform leveraging SAP HANA Analytical views and SAP Analysis for Office
- CCH Tagetik software and operation from only one single Partner leads to time savings in operation



FOCUS
ONLINE

8 T/M 12 NOVEMBER 2021

Q&A

Bedankt voor je deelname

Bekijk op www.VNSGFocusOnline.nl welke sessies er nog meer zijn!



Wolters Kluwer

Let's Connect



woltersklauer.com



[linkedin.com/company/tagetik/](https://www.linkedin.com/company/tagetik/)



twitter.com/wolters_kluwer



[facebook.com/woltersklauer](https://www.facebook.com/woltersklauer)