



Why RISE on AWS

13 year partnership to help customers run better

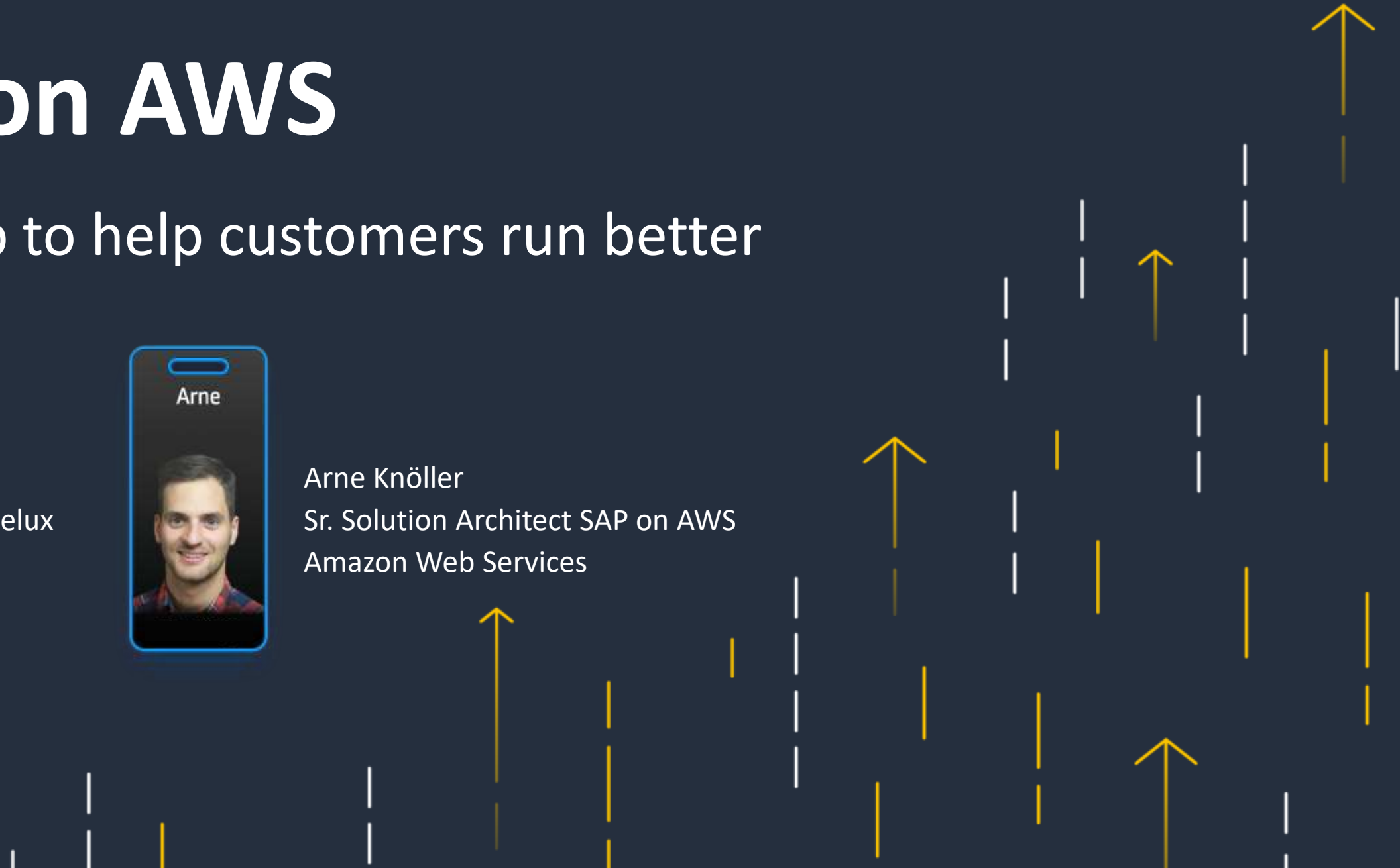


Wouter van Hertum
Head of SAP on AWS Benelux
Amazon Web Services



Arne Knöller
Sr. Solution Architect SAP on AWS
Amazon Web Services

Monday, November 8, 2021



Content

- Intro to Amazon and AWS
- Why companies are moving SAP to the cloud
- Why RISE on AWS
 - Experience
 - Reliability and Performance
 - Innovation and Global Footprint
 - RISE Funding
 - Partner Ecosystem
- Wrap up and Q&A

Intro to Amazon and AWS



Our mission

To be Earth's most
customer-centric company

Where innovation begins

Start with the customer
and work backwards



amazon go

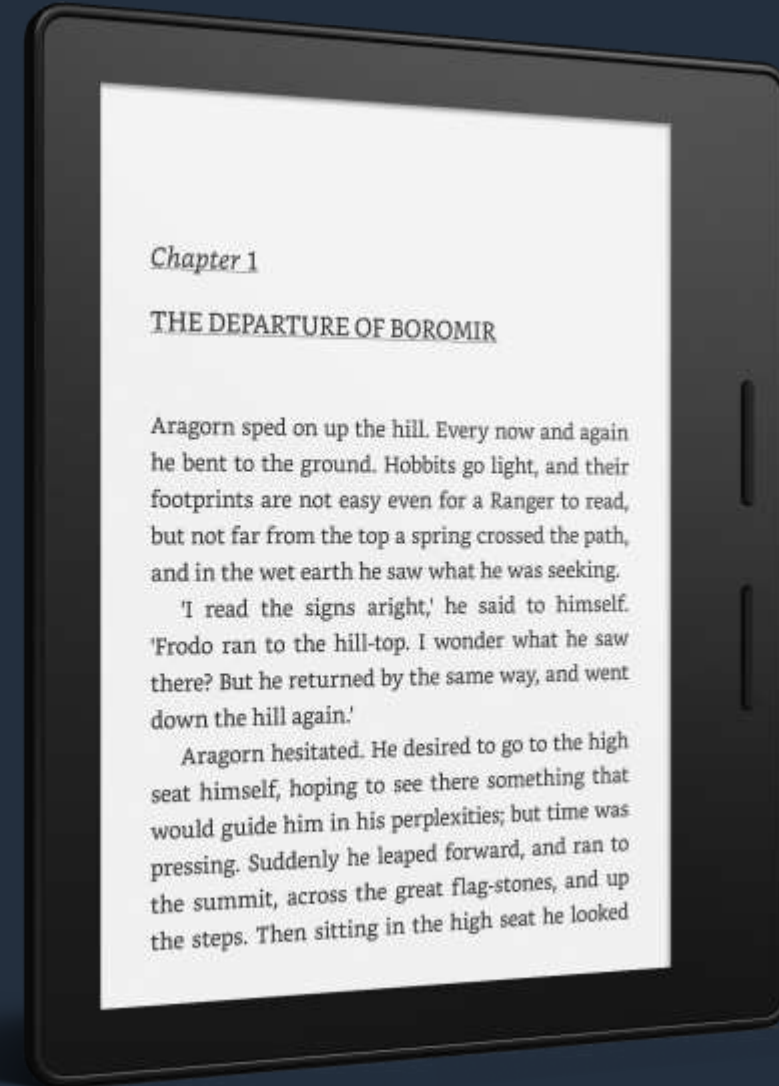
No Lines.
No Checkout.
(No, Seriously.)

- 1994 ● Founded
- 1995 ● Amazon.com
- 1998 ● CDs & DVDs
- 2006 ● AWS
- 2007 ● Kindle
- 2011 ● Video
- 2012 ● Groceries
- 2014 ● Alexa/Echo
- 2015 ● Bookstores
- 2017 ● Go

Invent and simplify

Leaders expect and require innovation and invention from their teams and always find ways to simplify. They are externally aware, look for new ideas from everywhere, and are not limited by “not invented here”. As we do new things, **we accept that we may be misunderstood** for long periods of time.

Willingness to be **misunderstood** for a long time...





107

Price reductions (since '06)

2757

New services and features
introduced in 2020

Millions of

Monthly active customers

Pretty good bet

AWS Recognized as a Cloud Leader for the 11th Consecutive Year

Gartner 2021 Magic Quadrant for Cloud Infrastructure & Platform Services (CIPS)



AWS Recognized as the 2020 Cloud Leader in IDC IaaS MarketScape

"AWS continues to **retain its dominance** in the public cloud IaaS market and offers customers the **widest portfolio** of infrastructure services in the public cloud today."

Source: IDC, IDC MarketScape: Worldwide Public Cloud Infrastructure in a Server 2020 Vendor Assessment, November 2020



ANALYST REPORT Forrester New Wave: Public Cloud Enterprise Container Platforms, Q3 2019

a broad range of fully managed and less Kubernetes consumption options, and **most containers deployed directly to its cloud infrastructure**. Amazon Web Services (AWS) continues to innovate and deeply integrate its container platform with its leading security and networking features."

Source: Forrester, Forrester New Wave: Public Cloud Enterprise Container Platforms, Q3 2019

FORRESTER

AWS Recognized as a Leader in Cloud AI Developer Services

"AWS continues to lead in the Cloud AI Developer Services market, offering a comprehensive set of services that enable customers to build and deploy AI applications at scale. AWS's commitment to security, reliability, and performance is a key differentiator in this market."

Source: Forrester, Forrester New Wave: Cloud AI Developer Services, Q3 2020

Vendor Rating: Amazon

"Amazon's obsession with customer-centricity and value-oriented product design principles is a **core reason for its strength** in products and services."
Gartner



AWS Recognized as a Cloud Database Leader

Forrester Vendor Rating for Cloud Database Management Systems (CDBMS)

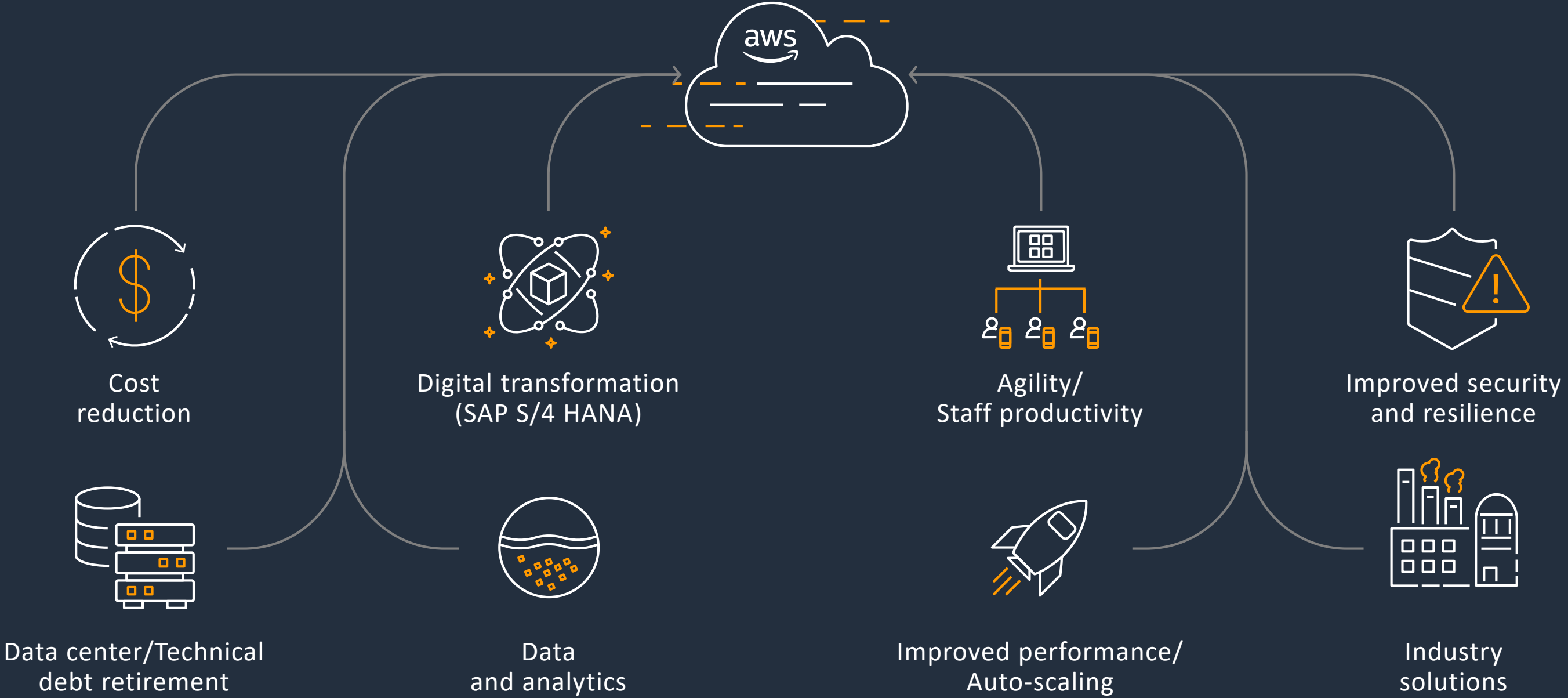


Breadth and depth of services (200+)

<p>ANALYTICS</p> <p>ANALYTICS DATA EXCHANGE DATA LAKE DATA PIPELINES DATA WAREHOUSE ELASTICSEARCH</p> <p>STREAMING ETL HADOOP/SPARK INTERACTIVE SQL QUERIES VISUALIZATIONS</p>	<p>COMPUTE</p> <p>COMPUTE AUTO SCALING BATCH JOBS EVENT-DRIVEN SERVERLESS COMPUTING INSTANCE TYPES MANAGED VIRTUAL PRIVATE SERVERS MANAGED REPOSITORY FOR SERVERLESS APPS RUN & MANAGE WEB APPS SERVERLESS COMPUTE VIRTUAL SERVERS</p> <p>CONTAINERS CONTAINER SERVICE MANAGED KUBERNETES STORE & RETRIEVE DOCKER IMAGES</p>	<p>END USER COMPUTING</p> <p>APP STREAMING DESKTOP COMPUTING</p> <p>MOBILE ACCESS STORAGE & COLLABORATION</p>	<p>MACHINE LEARNING</p> <p>ML FRAMEWORKS DEEP LEARNING AMIs & CONTAINERS HARDWARE ACCELERATION ML AT THE EDGE TENSORFLOW, PYTORCH, MXNET</p> <p>ML SERVICES CHATBOTS ENTITY EXTRACTION FACE ANALYTICS FACE SEARCH FORECASTING IMAGE LABELING NATURAL LANGUAGE PROCESSING PERSONALIZATION & RECOMMENDATION SENTIMENT ANALYSIS SPEECH TRANSCRIPTION TEXT & DATA EXTRACTION TEXT TO SPEECH TRANSLATION VIDEO & IMAGE ANALYSIS CONTENT MODERATION</p> <p>CRASHMAPPER AUTOMATIC MODEL TUNING DATA LABELING HOSTED NOTEBOOKS ML MARKETPLACE MODEL HOSTING MODEL OPTIMIZATION MODEL TRAINING PRE-BUILT ALGORITHMS TOPIC MODELING DEEP LEARNING MODELS REINFORCEMENT LEARNING SPOT INSTANCES BATCH PREDICTIONS REAL-TIME PREDICTIONS</p>	<p>MEDIA SERVICES</p> <p>LIVE VIDEO TRANSPORT MEDIA STORAGE TRANSCODING VIDEO ORIGINATION & PACKAGING</p> <p>VIDEO PERSONALIZATION & MONETIZATION VIDEO PROCESSING & DELIVERY VIDEO STREAMING ANALYSIS</p>	<p>SATELLITE</p> <p>SATELLITE OPERATIONS</p>
<p>AR + VR</p> <p>AR/VR EXPERIENCES</p>	<p>DATABASE</p> <p>REAL-TIME DATABASES HIGH-PERFORMANCE RELATIONAL DATABASE BUILT FOR THE CLOUD MANAGED MARIADB MANAGED MYSQL MANAGED ORACLE MANAGED POSTGRES MANAGED SQL SERVER</p> <p>PURPOSE-BUILT DATABASES DOCUMENT DATABASE GRAPH DATABASE IN-MEMORY CACHING KEY-VALUE STORE DATABASE LEDGER DATABASE TIME SERIES DATABASE</p>	<p>HYBRID ARCHITECTURE</p> <p>AWS SERVICES ON PREMISES DATA INTEGRATION INTEGRATED DEVICES & EDGE SYSTEMS INTEGRATED IDENTITY & ACCESS</p> <p>INTEGRATED NETWORKING INTEGRATED RESOURCE & DEPLOYMENT MANAGEMENT VMWARE CLOUD ON AWS</p>	<p>GAME TECH</p> <p>CROSS-PLATFORM 3D GAME ENGINE GAME SERVER HOSTING</p>	<p>MIGRATION & TRANSFER</p> <p>APPLICATION MIGRATION DATABASE MIGRATION EXABYTE-SCALE MIGRATION ONLINE DATA TRANSFER SCHEMA CONVERSION SERVER MIGRATION TRANSFER FOR SFTP</p>	<p>SECURITY, IDENTITY, & COMPLIANCE</p> <p>ACCESS CONTROL ASSESSMENT & REPORTING CONFIGURATION COMPLIANCE DATA PROTECTION DDOS PROTECTION IDENTITY MANAGEMENT KEY MANAGEMENT & STORAGE MONITORING & LOGGING RESOURCE MANAGEMENT THREAT DETECTION WEB APPLICATION FIREWALL</p>
<p>AWS COST MANAGEMENT</p> <p>ANALYZE AWS COSTS COST & USAGE BUDGETS COST & USAGE REPORTS RESERVED INSTANCES REPORTING</p>	<p>DEVELOPER TOOLS</p> <p>ANALYZE & DEBUG APPLICATION LIFECYCLE MANAGEMENT AUTHORING BUILD & TEST CONTAINERS DEVOPS RESOURCE MANAGEMENT ONE-CLICK APP DEVELOPMENT PATCHING PIPELINE ORCHESTRATION RESOURCE TEMPLATES TRIGGERS</p>	<p>INFRASTRUCTURE</p> <p>AVAILABILITY ZONES CUSTOM HARDWARE DATA CENTER INFRASTRUCTURE GLOBAL NETWORK BACKBONE POINTS OF PRESENCE POWER INFRASTRUCTURE REGIONS</p>	<p>MANAGEMENT & GOVERNANCE</p> <p>ACTIVITY & API USAGE TRACKING CHATBOT CONFIGURATION TRACKING GOVERNANCE INVENTORY TRACKING LICENSE MANAGER MANAGE POLICIES MANAGE RESOURCES</p> <p>MONITORING PROVISIONING RESOURCE TEMPLATES SECURITY RECOMMENDATIONS SERVER MANAGEMENT SERVICE CATALOG SYSTEMS MANAGER</p>	<p>MOBILE</p> <p>API GATEWAY DEVELOPMENT FRAMEWORK IDENTITY MOBILE ANALYTICS</p> <p>MOBILE APP TESTING SINGLE INTEGRATED CONSOLE SYNC TARGETED PUSH NOTIFICATIONS</p>	<p>STORAGE</p> <p>ARCHIVE STORAGE BACKUP & RESTORE BLOCK STORAGE DATA TRANSFER EDGE PROCESSING & COMPUTING FILE STORAGE HIGH-PERFORMANCE FILE SYSTEM HYBRID CLOUD STORAGE OBJECT STORAGE WINDOWS FILE SYSTEM</p>
<p>APPLICATION INTEGRATION</p> <p>EMAIL MESSAGE BROKER QUEUEING & NOTIFICATIONS</p> <p>SEARCH TRANSCODING WORKFLOW</p>	<p>INTERNET OF THINGS (IOT)</p> <p>RULES ENGINE DEVICE ANALYTICS DEVICE GATEWAY DEVICE SDK DEVICE SHADOWS EVENT DETECTION & RESPONSE LOCAL COMPUTE LOCAL DATA COLLECTION MANAGEMENT & SECURITY MICROCONTROLLER OPERATING SYSTEM REGISTRY VISUAL APPLICATIONS DEVELOPMENT</p>	<p>MARKETPLACE</p> <p>ANALYTICS DATA PRODUCTS DATABASES DEVOPS IOT</p> <p>MACHINE LEARNING NETWORKING OPERATING SYSTEMS SECURITY STORAGE</p>	<p>NETWORKING & CONTENT DELIVERY</p> <p>APPLICATION DELIVERY DEDICATED NETWORK CONNECTION DOMAIN NAME SYSTEM LOAD BALANCING MONITOR APIS MONITOR MICROSERVICES NETWORK TOPOLOGY NETWORKING HUB PRIVATE CONNECTION TO APPS SCALE VPC & ACCOUNT CONNECTIONS SERVICE DISCOVERY VIRTUAL PRIVATE CLOUD</p>	<p>CUSTOMER ENABLEMENT</p> <p>ACCOUNT MANAGEMENT DASHBOARD PERSONALIZATION ENTERPRISE SUPPORT EXPERTS MARKETPLACE OPTIMIZATION GUIDANCE PARTNER ECOSYSTEMS PROFESSIONAL SERVICES SECURITY & BILLING REPORTS SOLUTIONS MANAGEMENT TRAINING & CERTIFICATION</p>	
<p>BUSINESS APPLICATIONS</p> <p>EMAIL & CALENDARING ONLINE MEETINGS SHARING & COLLABORATION</p> <p>UNIFIED COMMUNICATIONS VOICE-ENABLED WORKPLACE</p>	<p>BLOCKCHAIN</p> <p>BLOCKCHAIN TEMPLATES LEDGER DATABASE MANAGED BLOCKCHAIN</p>	<p>ROBOTICS</p> <p>CLOUD ROBOTICS</p>	<p>ROBOTICS</p> <p>CLOUD ROBOTICS</p>	<p>ROBOTICS</p> <p>CLOUD ROBOTICS</p>	

Why companies are moving SAP to the cloud

Business drivers for migrating SAP to the cloud



Is RISE with SAP the right choice for you?

What is RISE with SAP?



RISE with SAP is an S/4HANA offering that includes software licensing, cloud infrastructure, and managed services in a single contract from SAP.

RISE with SAP vs. SAP on AWS Native

	RISE with SAP	SAP on AWS Native
Migration approach	Short-term S/4HANA migration required	Lift and shift, move to suite on HANA, or migrate to S/4HANA
Management	SAP manages infrastructure and software	Customer/ partner manages infrastructure and software
Extensibility	Extend with SAP Business Technology Platform (more BTP services on AWS than all other providers combined)	Extend by natively integrating with all 200+ AWS services
Compliance	General compliance frameworks	Industry and country-specific compliance frameworks
Pricing	Includes Infrastructure, Software Subscription, Software Support and Technical Managed Services.	Includes Infrastructure; bring your own license and support for SAP app, Database and OS/ work with AWS Partners
Optimization	SAP landscape set in the RISE contract with options to ramp the usage tiers during the term.	Maximum flexibility to optimize your architecture and operations, and take advantage of commercial programs/ price reductions.

*Additional Cost for Disaster Recovery, Digital Access (Data Blocks), Customer Evaluation System, 99.9% SLA, Additional Storage and Usage tier

Why RISE with SAP on AWS?



Experience



Reliability and Performance



Innovation and Global Footprint



Partner Ecosystem



RISE Funding

Tap into AWS's 10+ years supporting mission-critical SAP workloads to accelerate your success

Run critical SAP workloads on the world's most secure, extensive, and reliable global cloud infrastructure

Extend to the SAP Business Technology Platform in 10 AWS Regions globally to modernize and innovate your core business processes

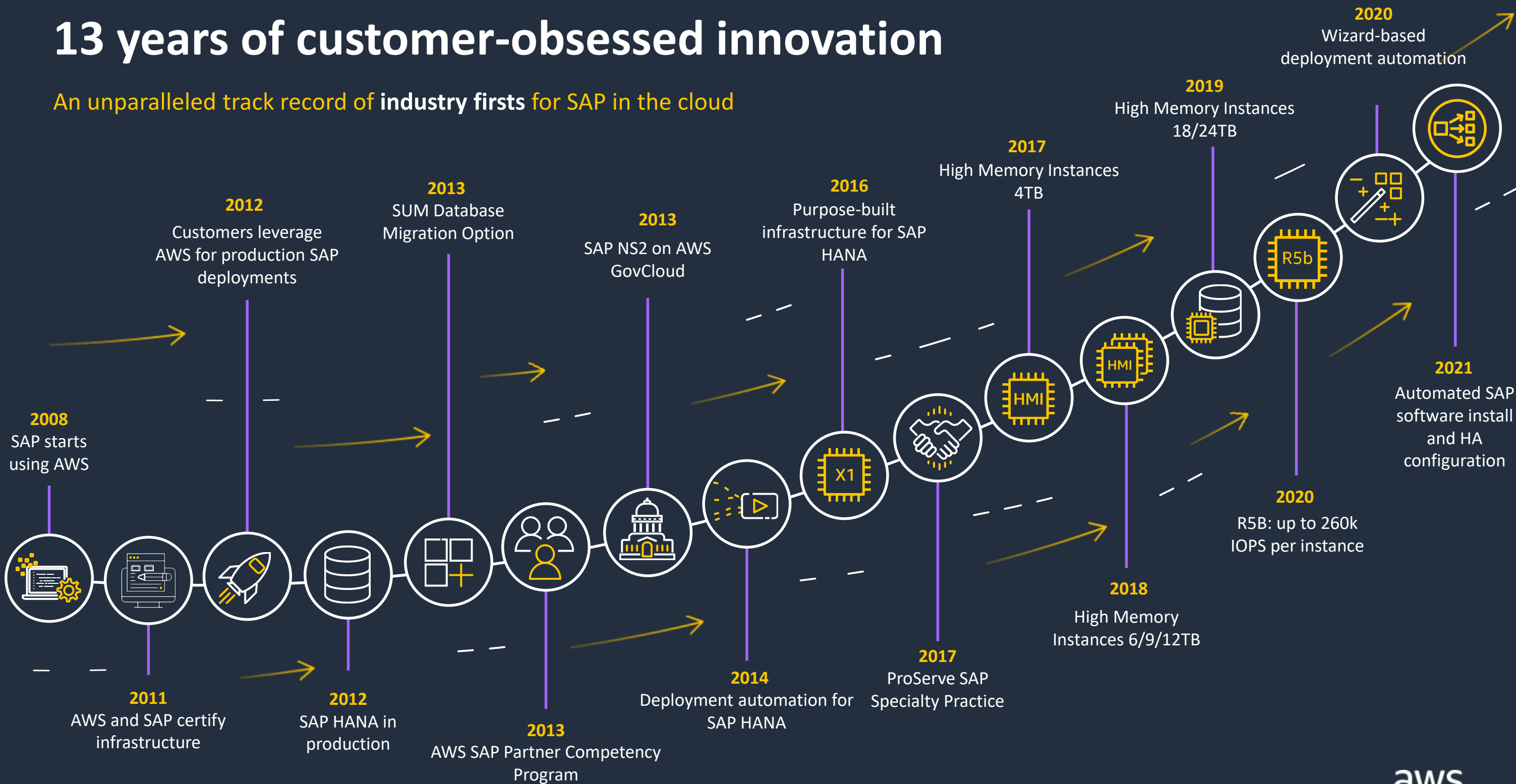
Tap into the largest SAP cloud ecosystem for migration, transformation, managed services, and software solutions purpose-built for SAP customers

Offset migration costs with RISE funding from AWS

Experience

13 years of customer-obsessed innovation

An unparalleled track record of industry firsts for SAP in the cloud



5000+ SAP customers across industries and geos trust AWS

HEALTHCARE & LIFE SCIENCES



ENERGY & NATURAL RESOURCES



RETAIL & CONSUMER GOODS



MEDIA & ENTERTAINMENT



PUBLIC SECTOR & DEFENSE



AUTOMOTIVE & TRANSPORTATION



MANUFACTURING & INDUSTRIAL



AGRICULTURE, CPG, & FOOD/BEV



PROFESSIONAL/ FINANCIAL SERVICES

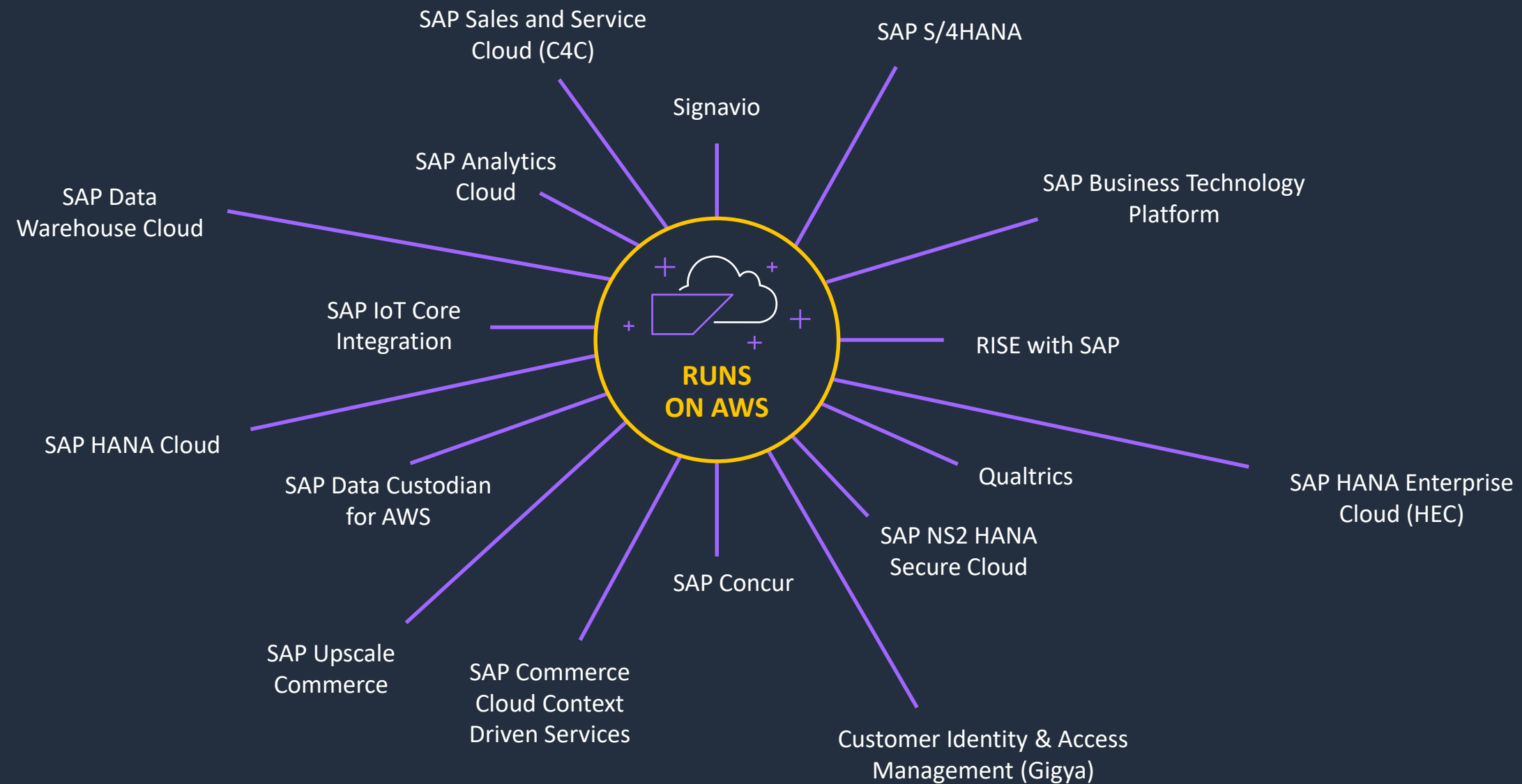


TECHNOLOGY



SAP's innovation platform of choice

SAP has been **using AWS since 2008** and **runs most of its customer facing offerings on AWS** today:



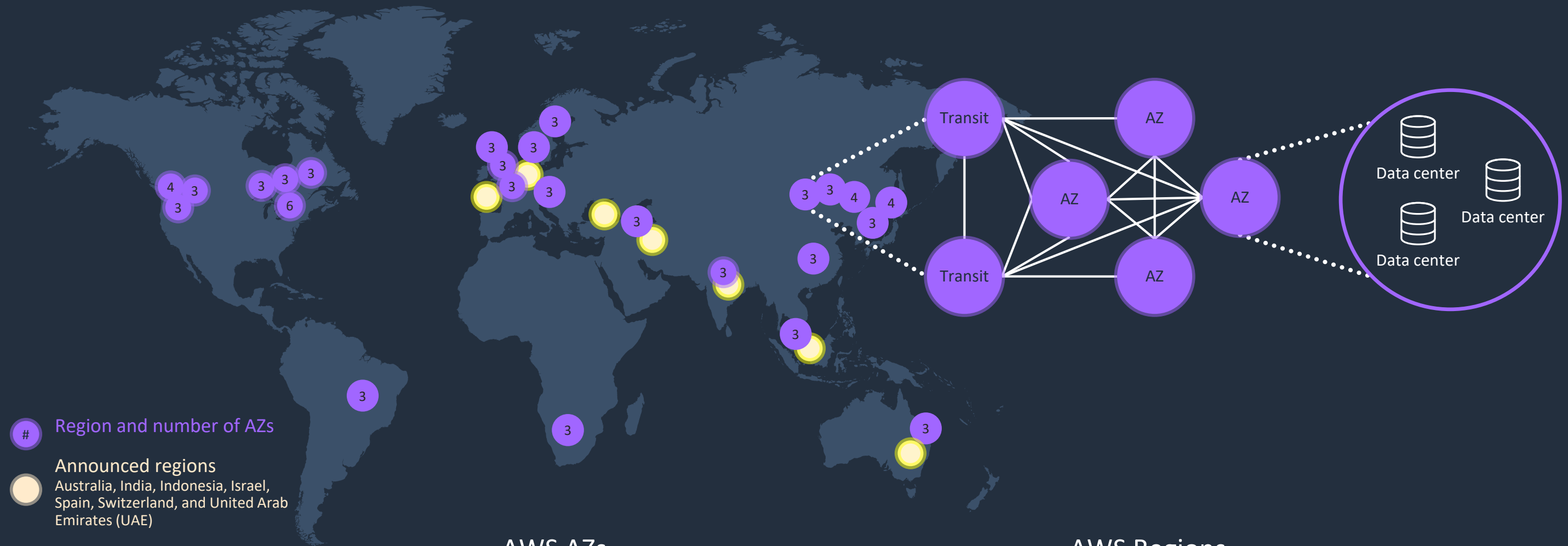
Analysts also notice our partnership



Reliability and Performance

Uncompromising approach to infrastructure design

AWS offers **2x more regions with multiple AZs** than the next closest cloud provider



25 Regions | 81 AZs

AWS AZs

AZs consist of one or more discrete data centers, each with redundant power, networking, and connectivity, housed in separate facilities.

AWS Regions

AWS Regions are physical locations in the world where we have multiple AZs

DR Options for RISE with SAP on AWS

Short range DR

DR within the same AWS region

RTO: 12h

RPO: 0

(optional: RTO: 4h)

Long range DR

DR across AWS regions

RTO: 12h

RPO: 30min

(optional: RTO: 4h)

Only on AWS, SAP provides an **RPO of 0** for short range DR!

Why Recovery Point Objective (RPO) = 0 matters



Operations Slow Down When RPO is NOT 0

My shipping system says the order is shipped. How come the system is asking me to ship the same order again? Isn't this a duplicate

How come my order status doesn't match up between my retail system and SAP system?

I already completed the job order, we has it been reassigned and marked as incomplete after the system crash?.

Sales and Customer Service Impacted when RPO does NOT equal 0

I got email confirmation that my order was received, I checked 30 minutes later and it says order doesn't exist

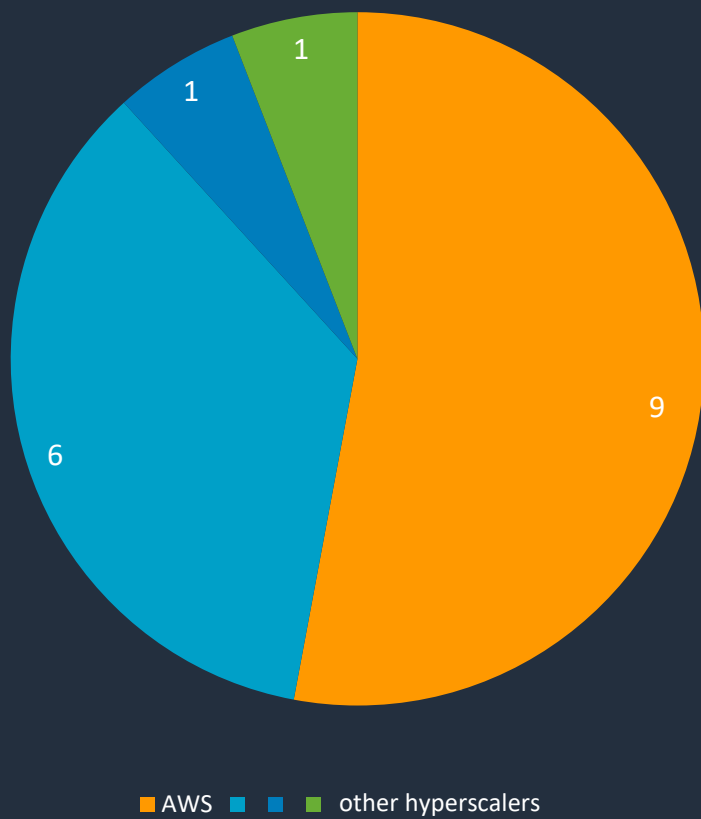
I just created a bunch of new customer accounts 30 minutes ago, they are now gone after a system crash!

What happened to my order that was here 10 minutes ago?

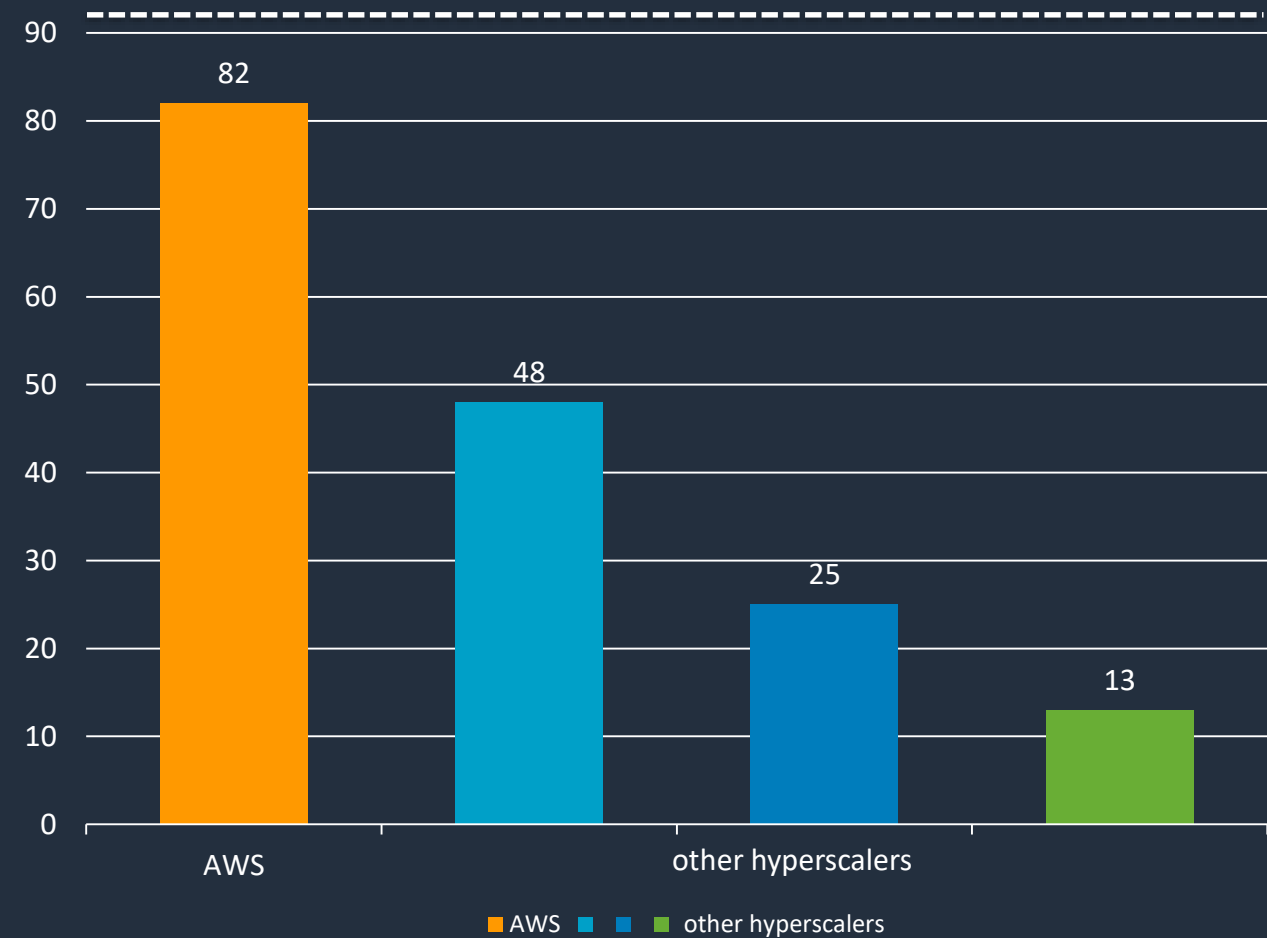
Innovation and Global Footprint

SAP Business Technology Platform on AWS

Regions of BTP by provider



BTP services by provider



- EU Access Region only available on AWS

as of November 2021 – SAP Discovery Center – Service Catalog

Top Reasons for Running RISE with SAP and BTP on AWS

9

AWS Regions
for BTP vs 8 total from other
hyperscalers

34

more BTP services available
on **AWS** than on next
hyperscaler

57

more BTP services available
on **AWS** than on second next
hyperscaler

0

RPO
only on AWS
due to AWS' unique multi AZ
architecture
(short range DR – synchronous)

1

Global Network
with simplified
connectivity patterns

100%

Performance - AWS Nitro
frees up 100% of
EC2 instance for
customer use

as of November 2021 – SAP Discovery Center – Service Catalog

Source: SAP DR SLA [document](#), SAP 2nd DR SLA [document](#)

Key BTP services **only** available on AWS

SAP ABAP Environment



Enables RISE customers to move their ABAP assets and investments to the cloud and leverage their ABAP developers to build and run ABAP applications in the cloud

Signavio



Allows SAP RISE customers to quickly understand, improve, transform and manage their business processes at scale with business process intelligence and management

Master Data Integration for Business Partners Service



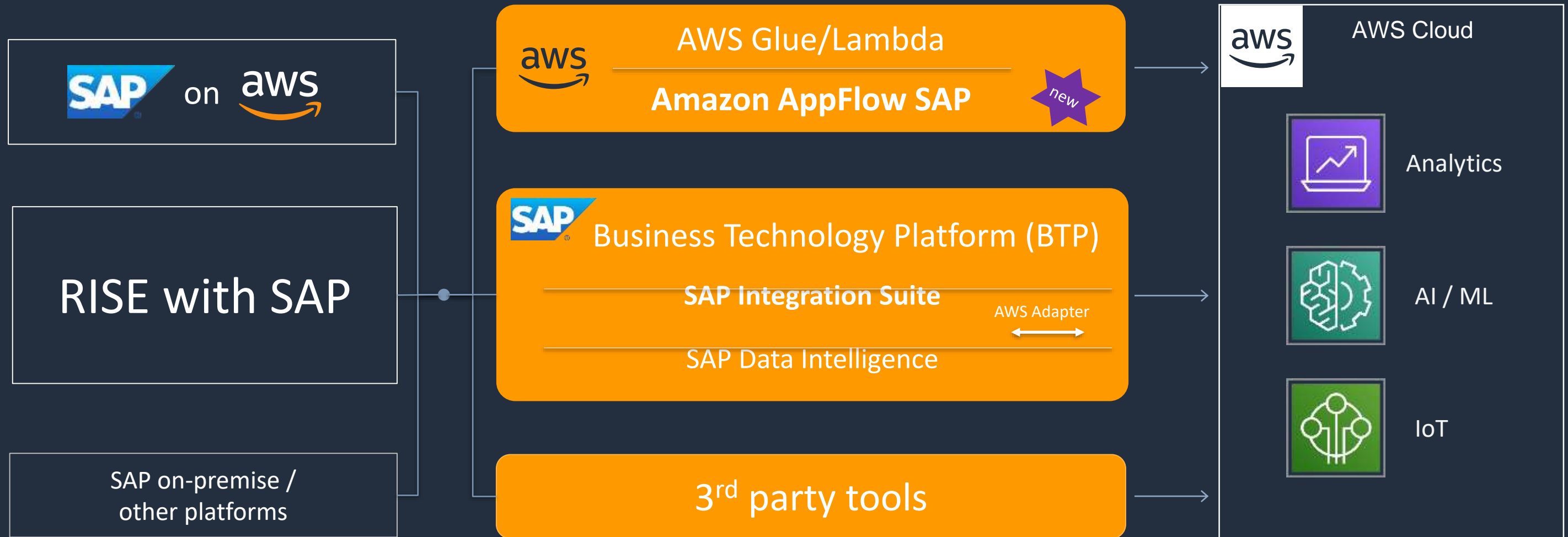
Allows SAP RISE customers to share Master Data with other SAP and non SAP applications without impacting performance of their ERP/S4HANA systems and building one off integrations. Examples include sharing Master Data with cloud HR and cloud CRM solutions.

Advanced Variant and Pricing Configuration Service



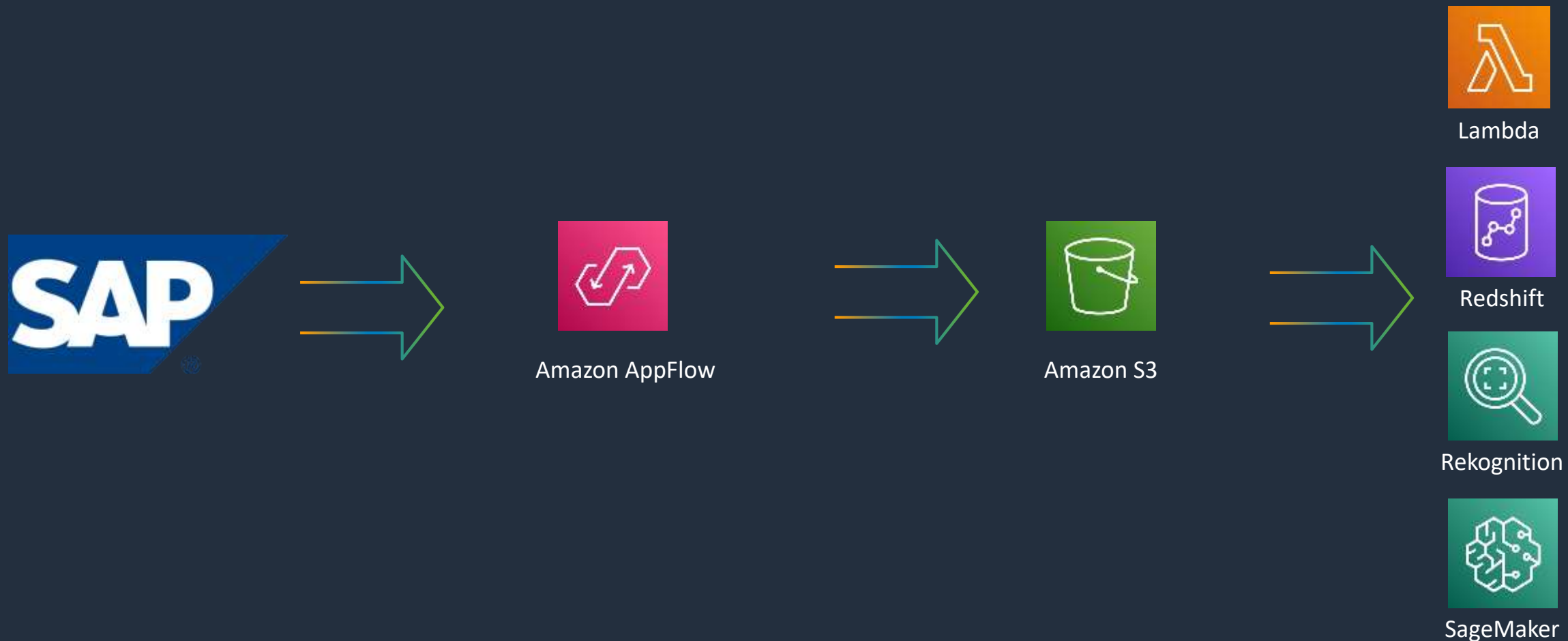
Enables RISE customers, especially in Manufacturing and High Tech industries, to share complex Pricing and Product Configuration data from ERP and S/4HANA with other SAP and non SAP ecommerce applications.

Integration Options to AWS Services



Bring Data from SAP into AWS

Use Amazon AppFlow to connect and run data flows from SAP using OData Services. Build your solution quickly via the Console, and scale out your configurations using APIs, CLI, or CloudFormation templates.



Partner ecosystem

Kickstart your RISE journey with the SAP on AWS partner community

40

MIGRATION
ACCELERATION
PROGRAM FOR SAP
PARTNERS

Gain consulting support,
training and services credits
to accelerate your SAP
migration

65

AWS SAP
COMPETENCY
PARTNERS

Streamline migration and
innovation with AWS
partners that have proven
SAP on AWS customer
success



RISE Funding

RISE with AWS funding



Flat funding amounts provided, based on T-shirt size to offset migration costs



Global availability across all segments



Email woutervh@amazon.com to learn more

Key takeaways

Why RISE with SAP on AWS?



Experience

Tap into AWS's 10+ years supporting mission-critical SAP workloads to accelerate your success



Reliability and Performance

Run critical SAP workloads on the world's most secure, extensive, and reliable global cloud infrastructure



Innovation and Global Footprint

Extend to the SAP Business Technology Platform in 10 AWS Regions globally to modernize and innovate your core business processes



Partner Ecosystem

Tap into the largest SAP cloud ecosystem for migration, transformation, managed services, and software solutions purpose-built for SAP customers



RISE Funding

Offset migration costs with RISE funding from AWS

Q&A

Thank You

Wouter van Hertum

Head of SAP on AWS Benelux

Amazon Web Services

woutervh@amazon.com