



---

## SUBASSEMBLY CAPABILITY

---

The staff of MSI Tec have been modifying motors and mechanical assemblies for over 20 years. Thousands of subassemblies have been shipped to customers who are assured of receiving a high quality product, delivered on time, and meeting their exact needs and standards. Our customers include Fortune 500 companies, medical device companies requiring FDA approval, and aerospace companies. MSI Tec's documented quality program, process documentation, and work standards meet or exceed the highest standards our customers expect.

As summarized below, there are many benefits of using an MSI Tec subassembly. New modifications and applications are being developed every day. The opportunities for our customers to increase quality, save money and reduce inventory seem limitless to us. If you have a product or assembly idea that would benefit you, contact us. If you can imagine it, we can do it.

---

## KEY CAPABILITIES

---

- Internally terminating shielded motor cables
- Mounting encoder integral to motor
- Motor shaft modifications
- Changing motor bearings
- Adding gears, pulleys and leadscrews to motor shaft
- Performance testing, speed-torque curves
- Custom linear stages
- Assembly run-in and testing with reports
- Adding connector or other terminations to a motor cable assembly
- Custom wiring harnesses, including limit switches, grounding wires
- Labeling subassembly with customer specified data and part numbers
- Mechanical subassemblies

---

## BENEFITS

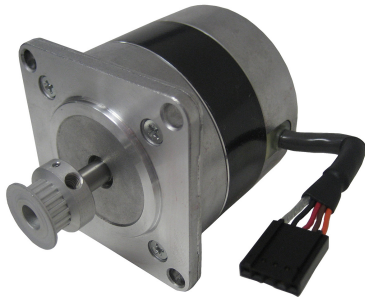
---

- Install one subassembly right out of the box
- Reduced inventory—stock only one part
- Reduced purchasing cost—order just one part
- Reduced manufacturing cost—no additional labor to assemble components
- Stocking program and Kanban capabilities
- On-time delivery
- Improved quality—use a tested and certified part made to a controlled drawing
- Smoother and improved production line flow



**SUBASSEMBLY CAPABILITY**

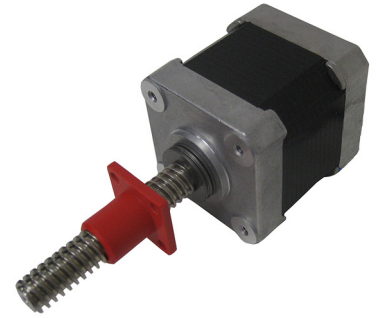
**MSiTEC**



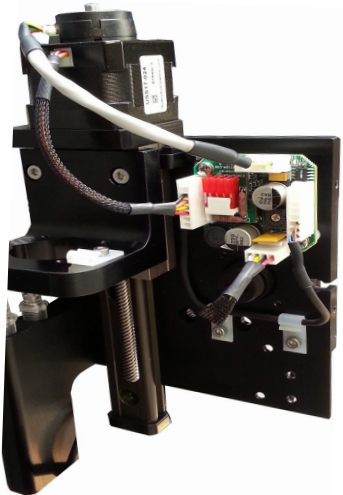
*Step motor with mounted pulley, cable and connector*



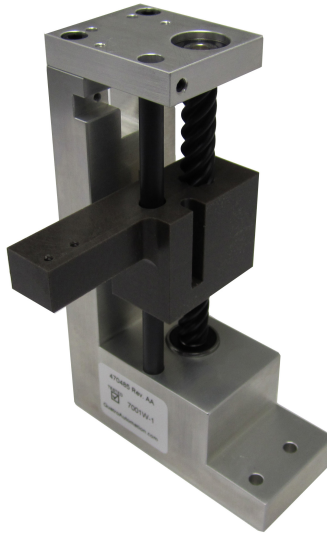
*Step motor with encoder, shielded cables, connectors*



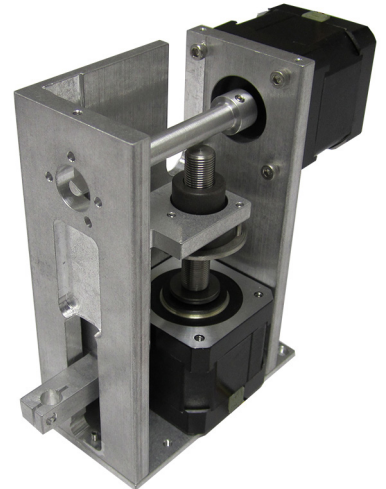
*Step motor with integral leadscrew and thrust bearing*



*Leadscrew driven pipette assembly with intelligent step motor drive*



*Custom elevator with lead-screw and linear guide*



*Dual axis micro-fluidic pump/valve assembly*



*Leadscrew assembly with bearings and drive pulley*



*Custom linear stage with belt and pulley motor drive*

Contact Us Toll Free at 866-397-7388

Visit Us at [www.msitec.com](http://www.msitec.com)