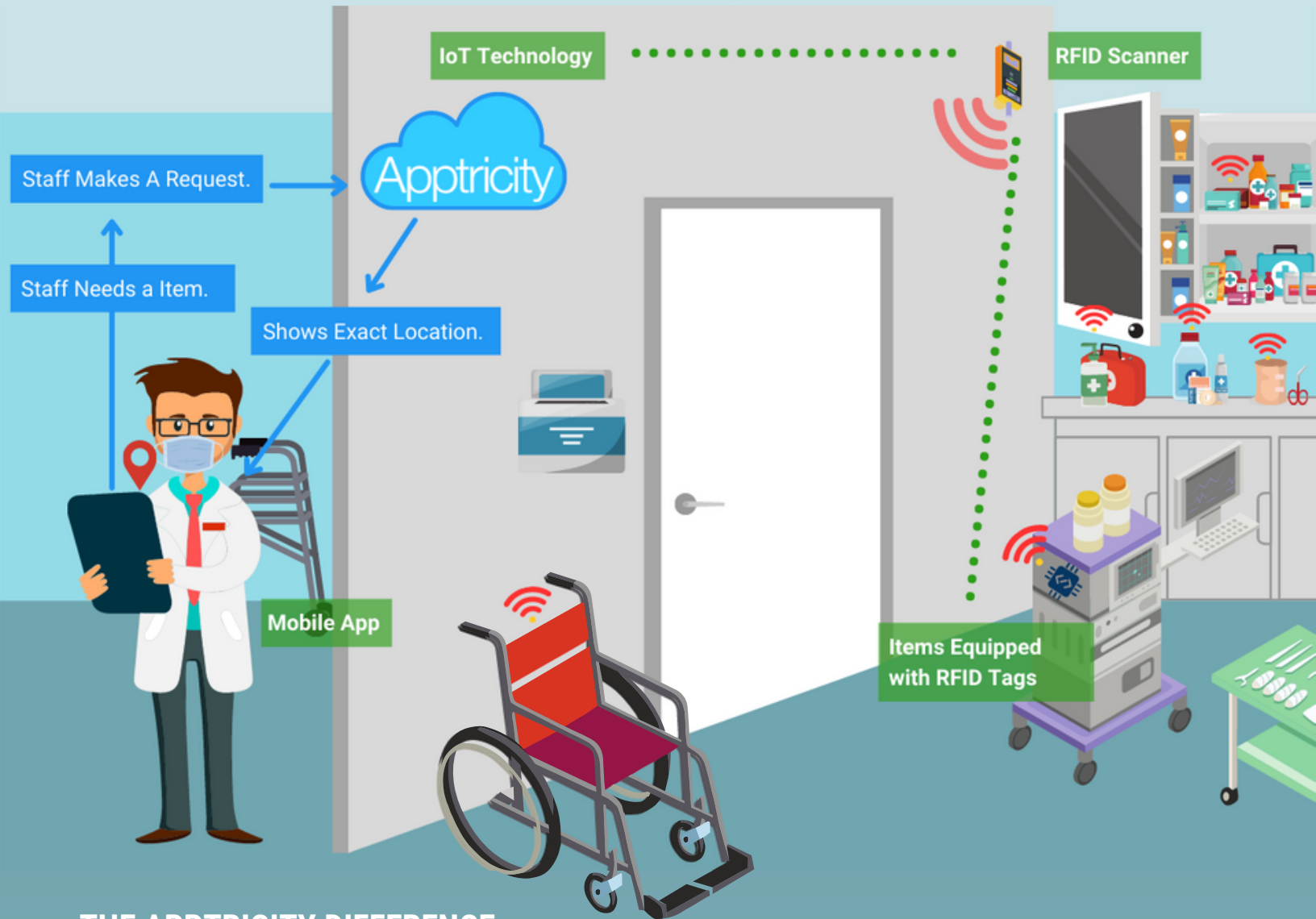


Did you know that medical staff spends 30% of each shift looking for equipment...



THE APPTRICITY DIFFERENCE

The Apptricity Mobile Asset application provides the ability to use a “Marco Polo” type of functionality to detect a Bluetooth tagged item's proximity. As a user gets closer to the Bluetooth tag, the mobile application will represent a hotter/colder reading to direct them to the asset's exact location. There is no more need to scanning endless floors for equipment, rows of labels, and various hospital rooms when every second counts.

A well-organized practice can literally save lives and integrating IoT connectivity can help while maintaining your high standards. Apptricity Asset Management will organize and revolutionize your asset tracking strategy, ensuring the right equipment is in the right place at the right time.