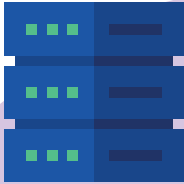


Benefits of using Mail Manager

ARUP



We don't host any of your data

- Lots of systems lock you in and force you to change where you want information to be stored.
- Mail Manager is an Outlook add-in which integrates with your business and where you'd like your data to be stored.



It isn't just an archive safety net, it's a PM solution

- Typically companies just have all of their information organised by each person.
- Mail Manager ensures anyone on any project can access the conversations they need to.



People actually want to use it

- Most systems are pushed on to project teams which they'll resist as we all hate admin.
- We believe nobody enjoys having an overloaded inbox, and giving staff a solution to turn into a to-do list makes a real difference to how productive you can be.

Developed by Arup

- Many systems are designed by people who don't truly understand projects.
- Mail Manager is designed by engineers and architects, for other similar firms.



Mail Manager makes it hard for people not to file

- Most project management solutions place a heavy emphasis on staff to file manually.
- Built in AI means staff file without thinking about it.

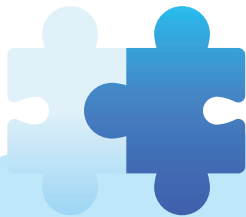


Set up in 90 minutes

- We speak to companies who spend months implementing systems and then more time persuading staff to use it.
- Mail Manager plugs in to your business, your Outlook, and can be set up cost effectively and in 90 minutes.



Mail Manager



Integrates with other BIM collaboration systems

- Common data environments, such as Aconex, handle documents effectively but emails are often neglected and are just left in an inbox but contain information you need to rely on having.
- We recognise the digital archive of a project is becoming more complex, and a company may wish to file in to a file server, SharePoint, Microsoft Teams, and a common data environment. All of which is possible, to make sure your digital twin on a project includes all of the electronic information.



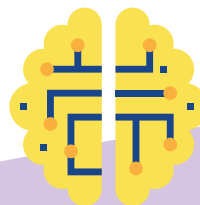
Perfect for larger companies

- Mail Manager provides instant visibility for enterprise businesses across different offices, departments and regions.
- Connect teams, improve project visibility and transparency across the board, and give leaders better access to important information.



Manages sent emails effectively

- Typically people don't file their sent items at all, meaning if you need to look back at what you've agreed to and why it can be challenging.
- Mail Manager's designed so just by replying to emails your filings done for you.



Built in AI tells you where information should be filed

- Typically you'll work on a number of projects and relying on staff to manually put emails in to the right project will never work.
- So we developed the ability to learn your behaviour, introduce automation, and also predict where you want to search.

BOOK A DEMO

+44(0) 191 479 1648 | www.mailmanager.com

