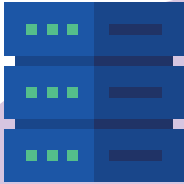


# Benefits of using Mail Manager

# ARUP



## We don't host any of your data

- Lots of systems lock you in and force you to change where you want information to be stored.
- Mail Manager is an Outlook add-in which integrates with your business and where you'd like your data to be stored.

## Developed by Arup

- Many systems are designed by people who don't truly understand projects.
- Mail Manager is designed by engineers and architects, for other similar firms.



## Mail Manager makes it hard for people not to file

- Most project management solutions place a heavy emphasis on staff to file manually.
- Built in AI means staff file without thinking about it.



## It isn't just an archive safety net, it's a PM solution

- Typically companies just have all of their information organised by each person.
- Mail Manager ensures anyone on any project can access the conversations they need to.



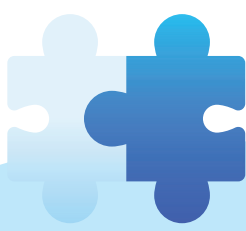
## Set up in 90 minutes

- We speak to companies who spend months implementing systems and then more time persuading staff to use it.
- Mail Manager plugs in to your business, your Outlook, and can be set up cost effectively and in 90 minutes.



## People actually want to use it

- Most systems are pushed on to project teams which they'll resist as we all hate admin.
- We believe nobody enjoys having an overloaded inbox, and giving staff a solution to turn into a to-do list makes a real difference to how productive you can be.



### **Integrates with other BIM collaboration systems**

- Common data environments, such as Aconex, handle documents effectively but emails are often neglected and are just left in an inbox but contain information you need to rely on having.
- We recognise the digital archive of a project is becoming more complex, and a company may wish to file in to a file server, SharePoint, Microsoft Teams, and a common data environment. All of which is possible, to make sure your digital twin on a project includes all of the electronic information.



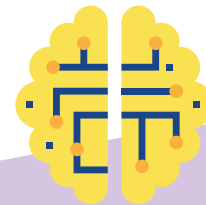
### **Perfect for smaller companies**

- Most document management systems require 6 figure investments & an SME would only use a fraction of the functionality available.
- Over 500 SME's use Mail Manager because it's cost effective, simple to set up, and people in those firms are directly involved with projects so can easily relate to how important information in emails can become.



### **Manages sent emails effectively**

- Typically people don't file their sent items at all, meaning if you need to look back at what you've agreed to and why it can be challenging.
- Mail Manager's designed so just by replying to emails your filings done for you.



### **Built in AI tells you where information should be filed**

- Typically you'll work on a number of projects and relying on staff to manually put emails in to the right project will never work.
- So we developed the ability to learn your behaviour, introduce automation, and also predict where you want to search.

**BOOK A DEMO**

**+44(0) 191 479 1648 | [www.mailmanager.com](http://www.mailmanager.com)**

