

6

5

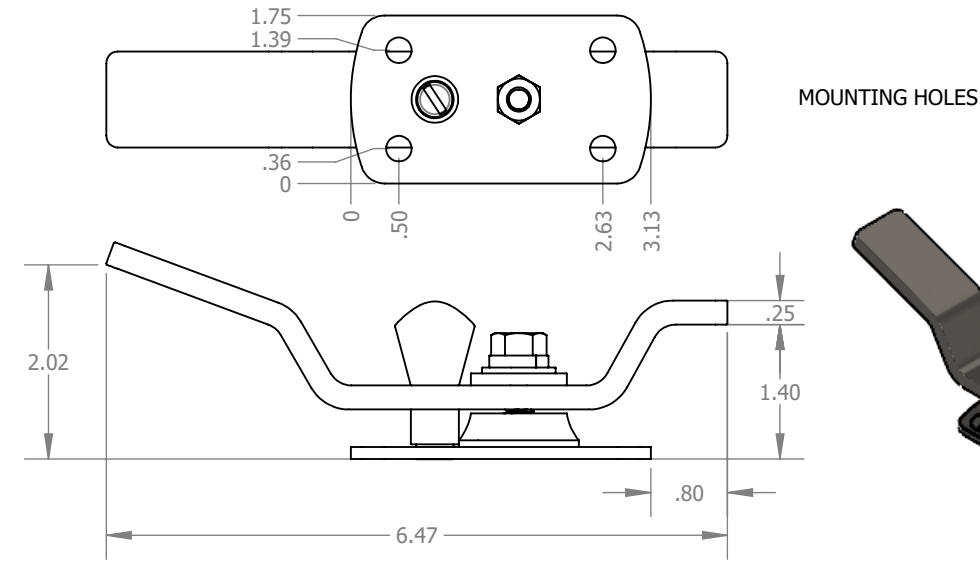
4

3

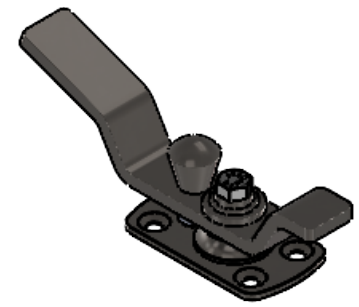
2

1

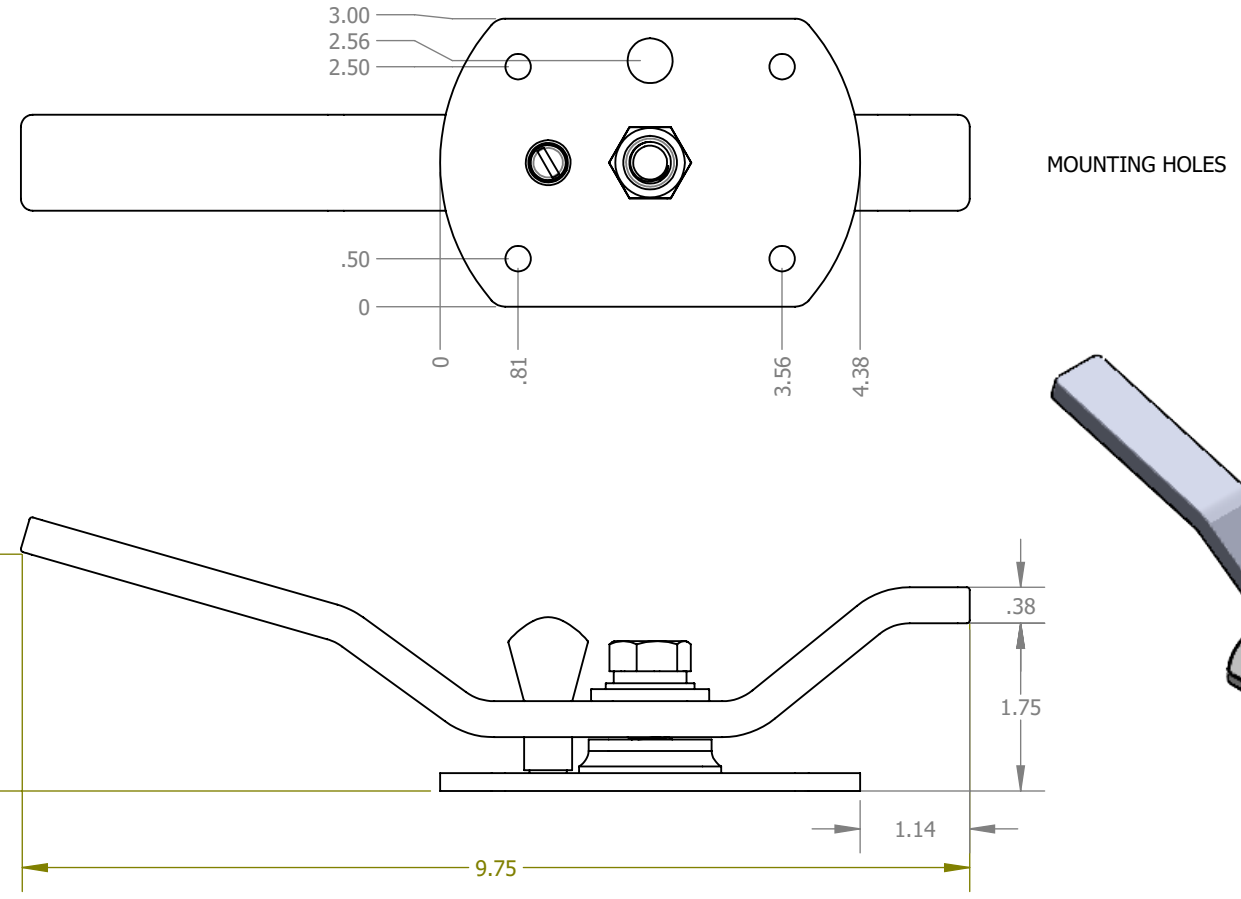
PN: 23422



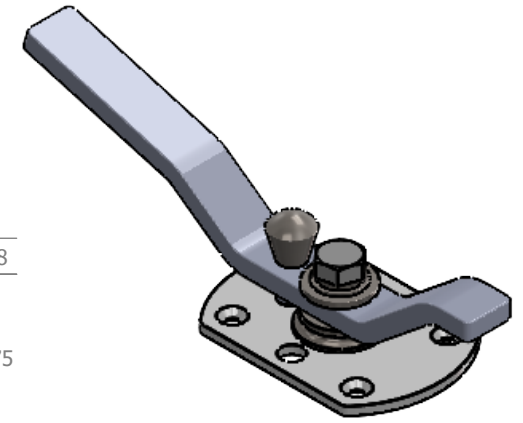
MOUNTING HOLES



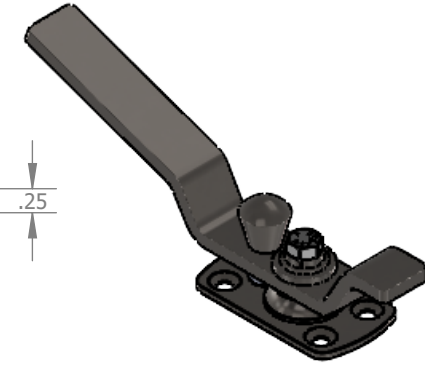
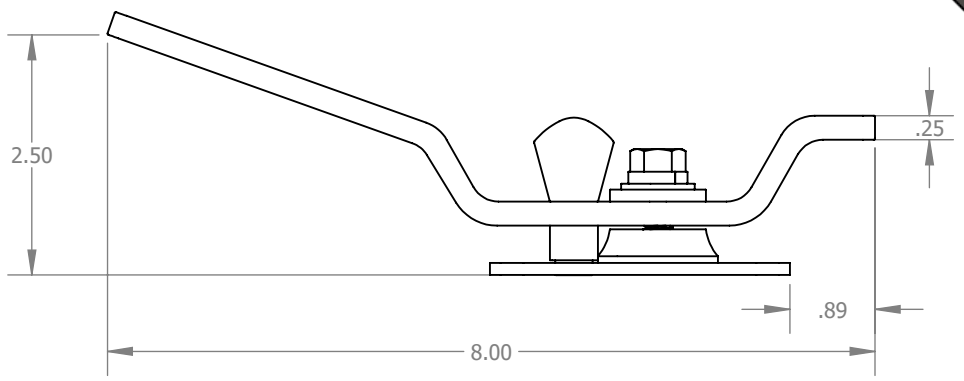
PN: 33421



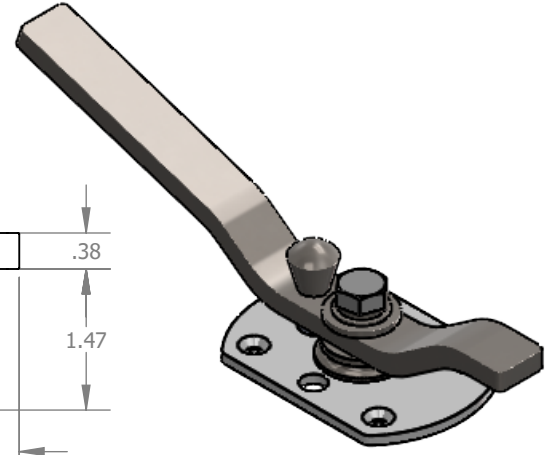
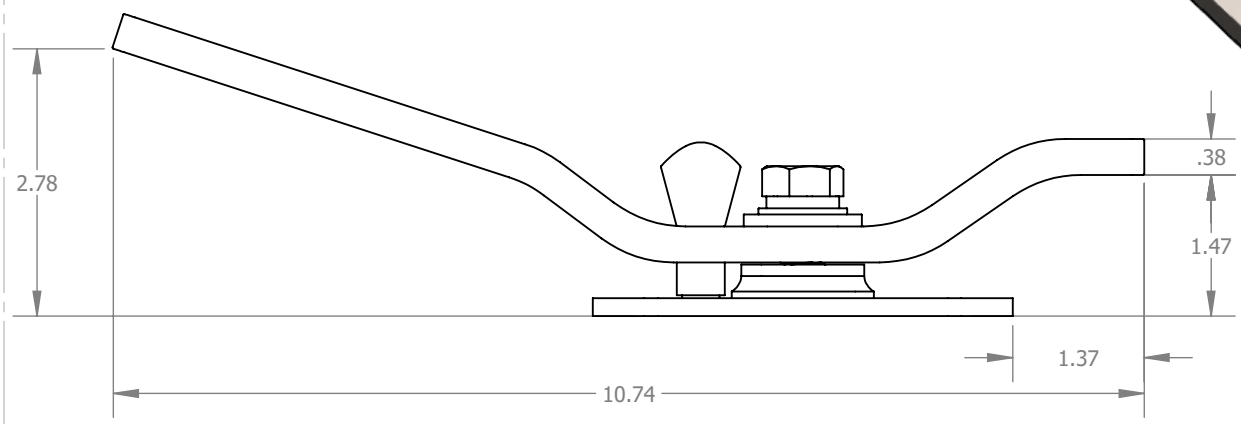
MOUNTING HOLES



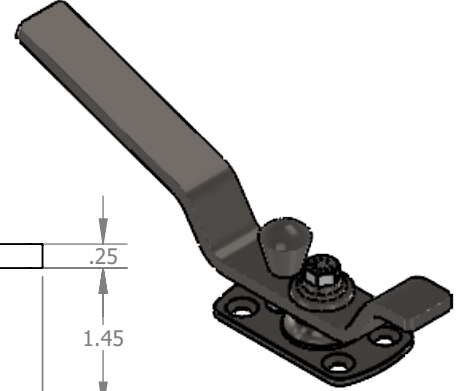
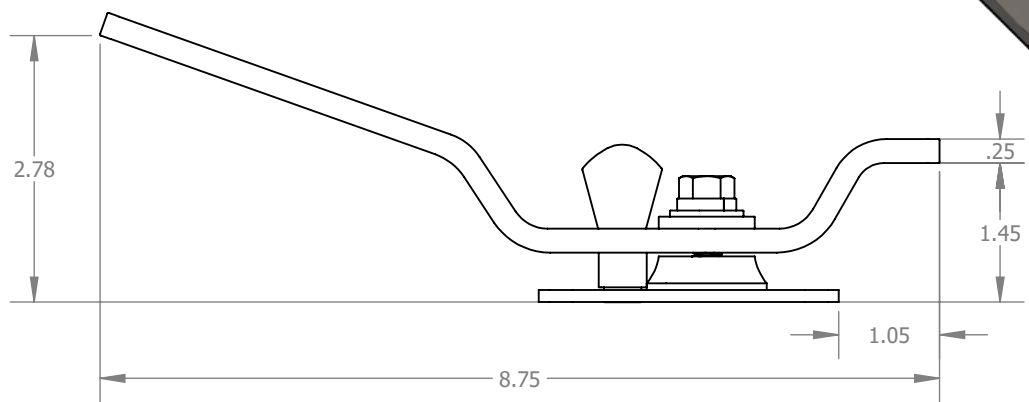
PN: 23421





PN: 43831



PN: 33422



A	PART NUMBER	LENGTH	HANDLE THICKNESS	BASE	PART NUMBER	LENGTH	HANDLE THICKNESS	BASE	PROPRIETARY AND CONFIDENTIAL THE INFORMATION CONTAINED IN THIS DRAWING IS THE SOLE PROPERTY OF GG SCHMITT & SONS. ANY REPRODUCTION IN PART OR AS A WHOLE WITHOUT THE WRITTEN PERMISSION OF GG SCHMITT & SONS IS PROHIBITED.	THIRD ANGLE PROJECTION  UNLESS OTHERWISE SPECIFIED: DIMENSIONS ARE IN INCHES [SECONDARY IS IN MILLIMETERS] TOLERANCES: FRACTIONAL: 1/16" ANGLE: ± .5° .XX ± .03", .XXX ± .010 INTERPRET DIM AND TOL PER ASME 14.5M-1994	DESCRIPTION LATCH TRANSOM			 PART NO. SEE TABLE				REV
	23422	6-1/2"	1/4"	3-1/8" X 1-3/4"	33421	9-3/4	3/8"	4-3/8" X 3"			DRAWN	CONOR W	8/19/2021	SCALE	1:2	DO NOT SCALE DRAWING	SIZE	B
	23421	8"	1/4"	3-1/8" x 1-3/4"	43831	10-3/4	3/8"	4-3/8" X 3"										
	33422	8-3/4"	1/4"	3-1/8" X 1-3/4"														

6

5

4

3

2

1

2821 Old Tree Dr
 Lancaster, PA 17603
 (717)394-4301
 7201 15th St E
 Sarasota, FL 34243
 (941)562-1947