

6

5

4

3

2

1

D

D

C

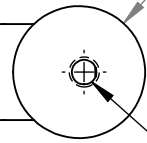
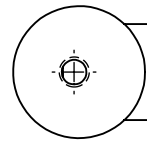
C

B

B

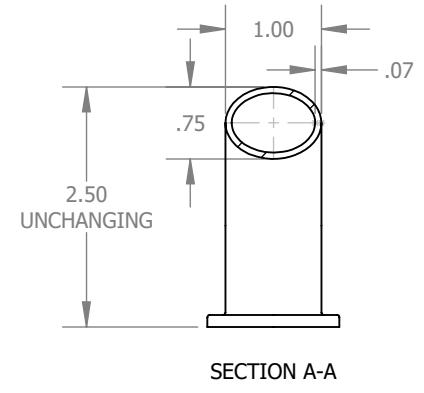
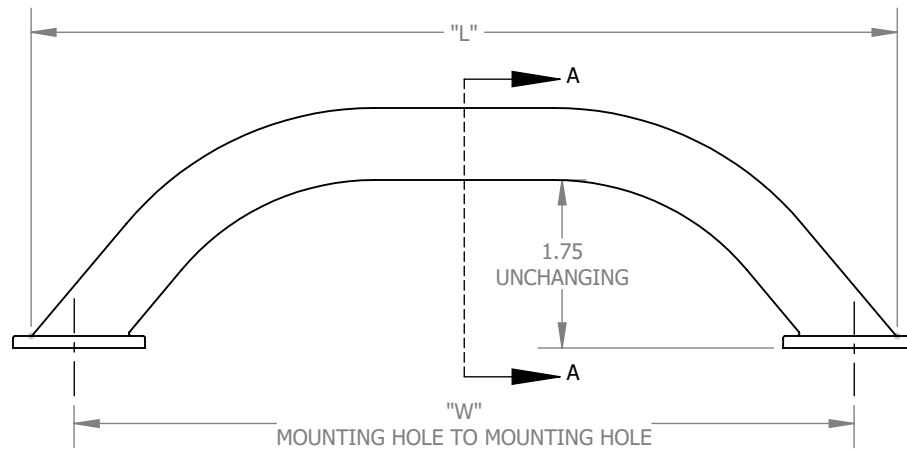
A

A



Ø 1.38

5/16-18 TAPPED HOLE



SECTION A-A

**PROPRIETARY AND CONFIDENTIAL**  
 THE INFORMATION CONTAINED IN THIS DRAWING IS THE SOLE PROPERTY OF GG SCHMITT & SONS.  
 ANY REPRODUCTION IN PART OR AS A WHOLE WITHOUT THE WRITTEN PERMISSION OF GG SCHMITT & SONS IS PROHIBITED.

**THIRD ANGLE PROJECTION**  
  
 UNLESS OTHERWISE SPECIFIED: DIMENSIONS ARE IN INCHES [SECONDARY IS IN MILLIMETERS]  
 TOLERANCES:  
 FRACTIONAL: ± 1/16"  
 ANGLE: ± 5°  
 XX ± .03", XXX ± .010  
 INTERPRET DIM AND TOL PER ASME 14.5M-1994

**DESCRIPTION**  
**RAIL, GRAB W/PADS**

**GG Schmitt & Sons**  
 2021 City View Dr  
 Longmont, CO 80501  
 P: 303.782.2100  
 F: 303.782.2101  
 www.ggschmitt.com

PART NO. **SEE TABLE** REV

PART NUMBER	"L"	"W" = "L" - .875
63109	9"	8.125"
63112	12"	11.125"

DRAWN	CONOR W	8/12/2021
CHECKED		

SCALE	DO NOT SCALE DRAWING	SIZE	SHEET
1:2		A	1 OF 1

6

5

4

3

2

1