

INTEGRATED MESSAGE DESIGN & DATA MANAGEMENT

Accurate, Efficient,
Compliant Packaging

The Right Information: High Stakes, Constant Effort

With today's sophisticated package label designs, manual processes cost time and increase the risk of mistakes.

Labels with interlinked text and barcodes run a higher risk of operators selecting the wrong messages or entering incorrect data. And when dynamically changing production schedules mean yet another line change, maintaining compliant packaging becomes stressful and difficult. You need your systems to:

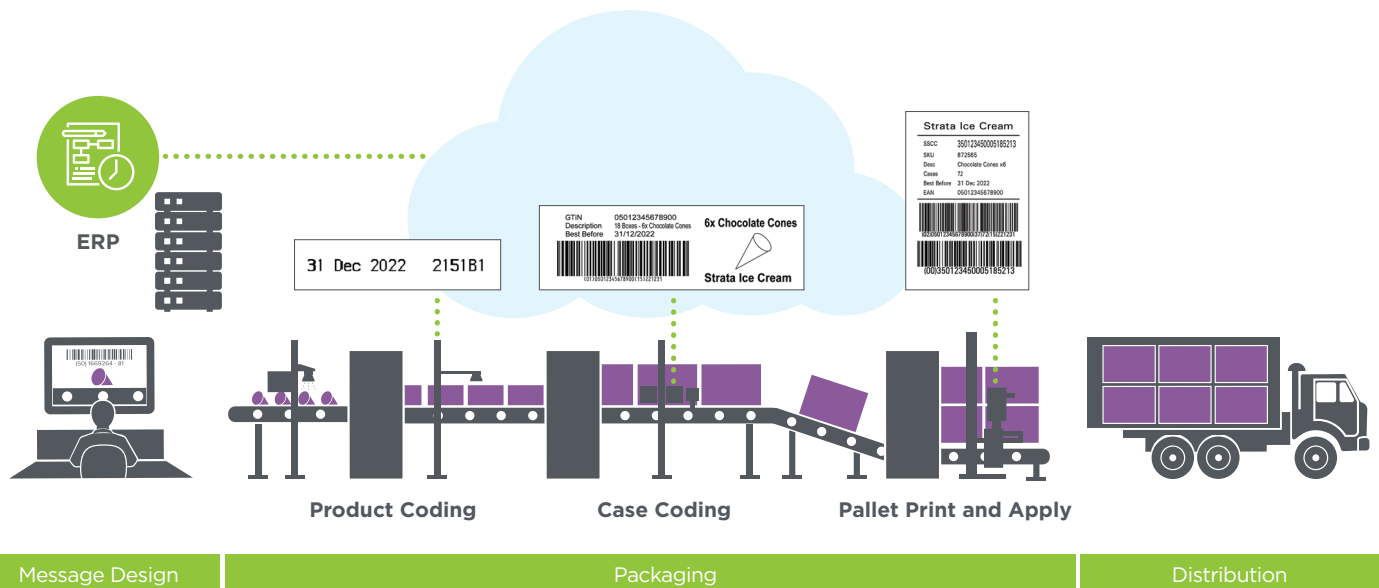
- Design and manage complex messages
- Accelerate line startup and message data maintenance
- Minimize risk of operator errors and time spent on manual tasks

Smart Package Coding & Data Management

Systech simplifies message design and coding from setup through startup. Our integrated message design and data management products can **reduce costs of manual entry and message data maintenance by up to 90%**—and **cut changeover duration by up to 50%**.

We dramatically reduce the risk of operator error and help you manage complex messages accurately, efficiently and with less waste. Systech makes it easy to ensure your industrial coding and packaging comply with changing regulations so your products safe and traceable throughout the supply chain.

Easier Start-Ups, Faster Changeovers and Fewer Errors



How It Works

Packaging compliance begins with the correct message design and coding. Systech increases accuracy, efficiency and cost savings with our integrated suite of products for:

- **Message Design:** Prepare and manage complex messages through one central interface and intuitive “design wizards”
- **Automation:** Accelerate line startup and changeover time, with fewer errors
- **Data Management:** Link fields to ERP master product tables and populate SKU data

Efficient Design, Streamlined Data Management

Systech’s hassle-free systems ensure your packaging and codes leave your factory in the right format, with the right data.

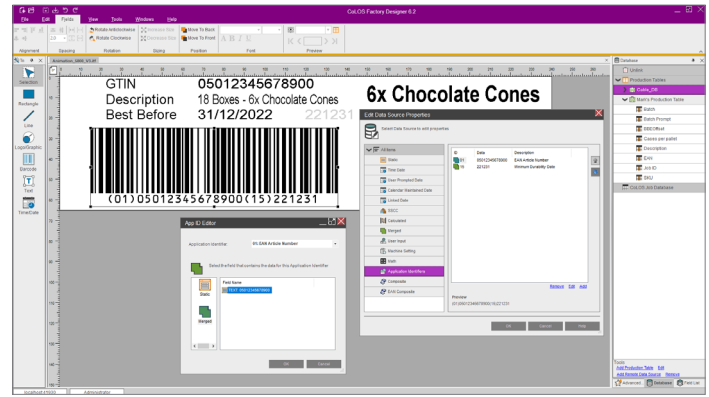
EFFICIENT MESSAGE DESIGN PREPARATION	STREAMLINED DATA MANAGEMENT
<ul style="list-style-type: none"> • Correct messages every time • Quick message recall and deployment • Time and cost savings 	<ul style="list-style-type: none"> • Live master data • Automatic data delivery for SKUs • Inbuilt data management

“Previously we had to manually upload every message into every single printer. Now the operator just scans the barcode, and the correct information is automatically sent from the central database to the printer.”

— Oliver Kast
Process Design Engineer, LAPP

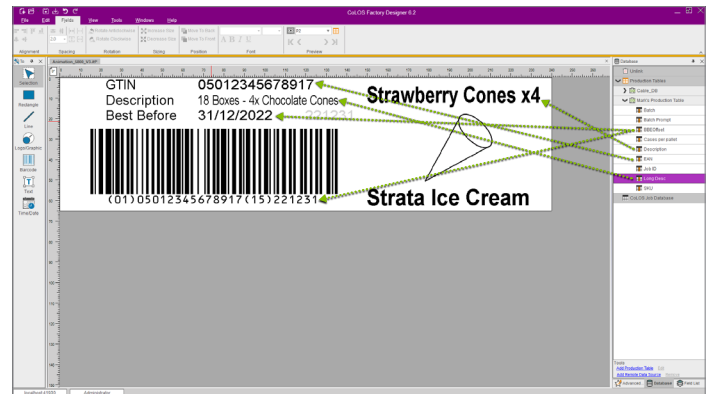
Message Design

Manage complexity with “design wizards”



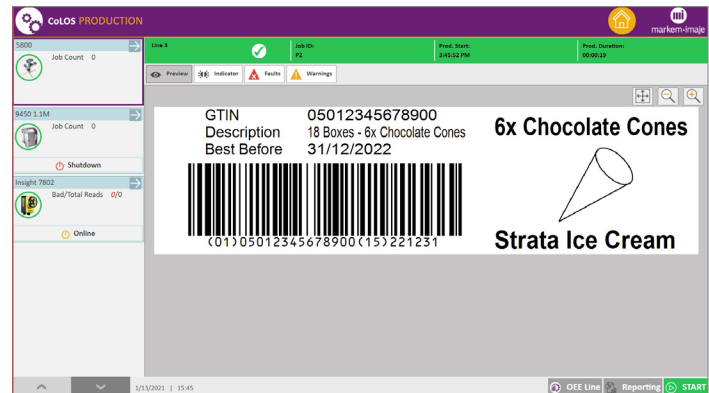
Data Management

Link to product data



Production Startup

Download job to complete production line



GET CONNECTED

+1 800 847 7123 (toll free)
+1 609 395 8400 (local)

SystechOne.com
Info@SystechOne.com

