

MAXIMIZE PRINTER PERFORMANCE & OEE

At Every Packaging Stage,
On Every Line

Tired of Stoppages & Poor Productivity?

You already know you need to increase production line efficiency by reducing downtime and improving performance... The challenge is figuring out how. And with dynamically changing requirements and production schedules, maintaining compliance becomes an especially stressful burden.

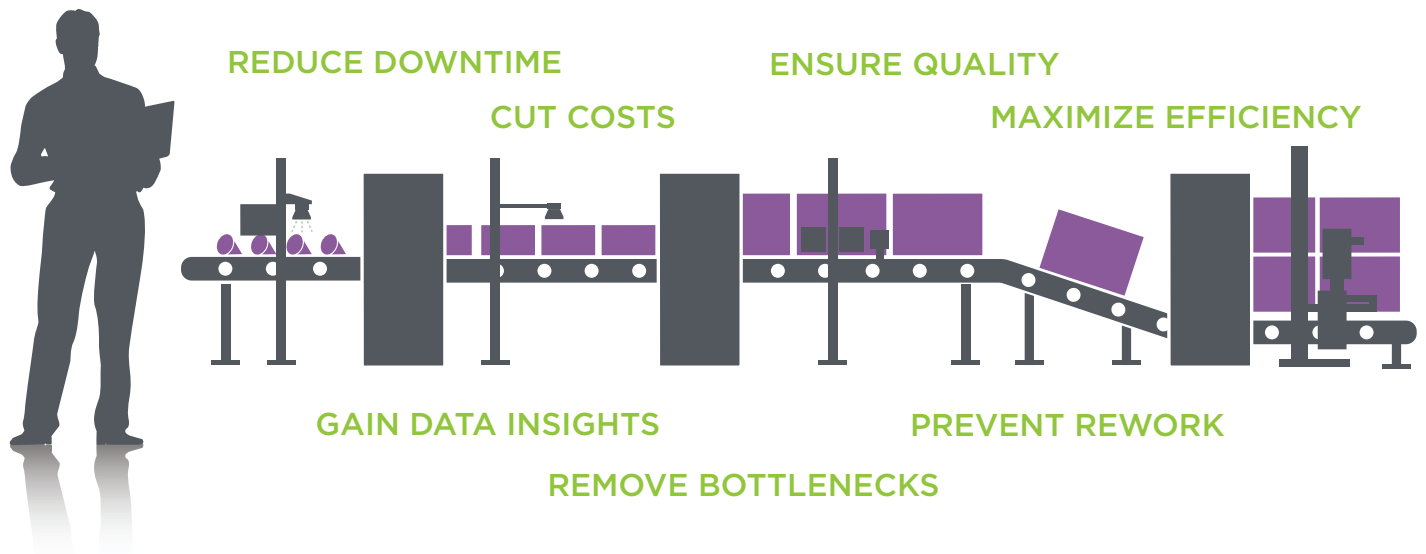
You need to get the right codes on the right products in the most efficient way, and you want a line control solution that does it for you with less effort and measurable results to:

- Speed startup time
- Avoid waste and costly reworks
- Minimize risk of human errors

Improve Efficiency, Performance & Sustainability

Systech automates coding and printing processes for greater uptime, instant visibility and maximum overall equipment effectiveness (OEE). We make sure you get the most out of your production lines from primary pack filling to completed pallets.

More than 10,000 global businesses rely on our packaging intelligence platform to streamline printer setup, integrate data and label management, and deliver actionable insight. Whether you want to improve a single line or roll out across multiple sites, we maximize your efficiency so you can focus on producing high-quality products that delight your customers.



How It Works

Systech's automated line control system is your one-stop shop for optimizing printer performance and improving every packaging stage.

- **Setup:** Download complete jobs in one step or automatically from line control equipment
- **Production:** Instantly access browser-based performance dashboards; get immediate alerts when problems occur
- **Quality Control:** Measure and act on real-time data obtained directly from printing and line equipment

Find Hidden Bottlenecks, Maximize OEE

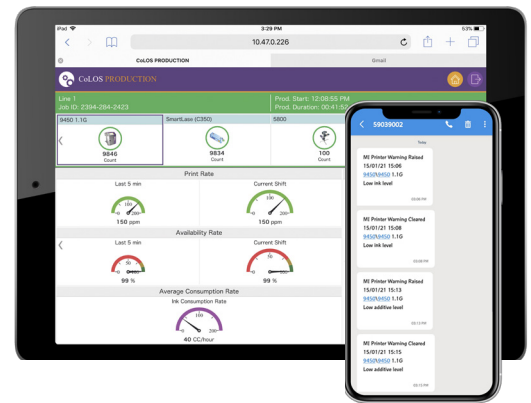
You can't make effective packaging line improvements without timely, actionable data. With Systech's real-time dashboards and actionable reports, you can make data-driven decisions that tackle key downtime, performance and quality losses. Our fully integrated suite of packaging line control products makes it easy to generate and see actionable insight for continuous improvement in your operations.

GREATER UPTIME, INSTANT VISIBILITY	CRITICAL INSIGHTS, ACTIONABLE DATA
<ul style="list-style-type: none"> • Fully automated production changeovers and equipment • Optimized dashboards monitor printer performance, consumable usage • Immediate, event-based alerts 	<ul style="list-style-type: none"> • Browser-based dashboards with real-time KPI • Automatic OEE calculations based on availability, performance, quality • Interactive historical reports

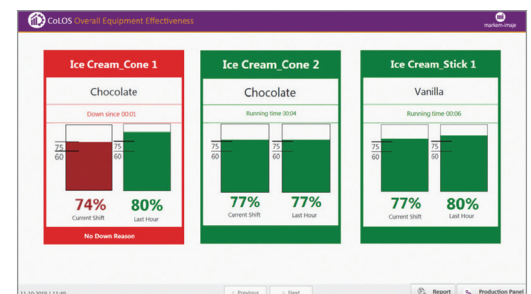
"We can now make better data-driven decisions to implement line improvements. CoLOS OEE has proved so effective that we're planning to deploy it across all our factories. In fact, I'm regularly asked by plants for updates on when they can deploy it at their location."

— **Todd Mondry**
Vice President of Engineering and Operations
Red River Commodities

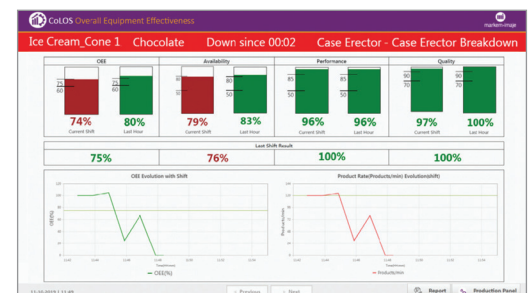
Printer Performance



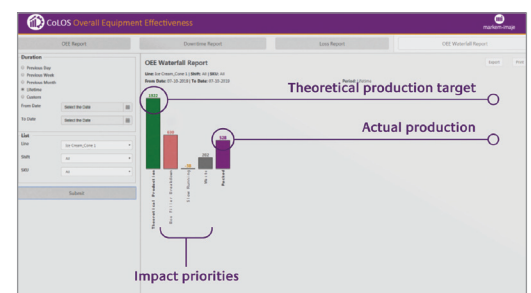
Data Capture and Display



Production Performance – “Win the Shift”



Data-Driven, Continuous Improvement



GET CONNECTED

+1 800 847 7123 (toll free)
+1 609 395 8400 (local)

SystechOne.com
Info@SystechOne.com

