

Systech Insight[™]

Driving better-informed decisions & actions for packaging operations

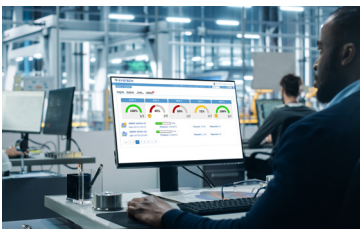
When it comes to manufacturing, the efficiency and reliability of your packaging line is crucial for delivering products that meet the highest quality standards. Systech Insight[™] is an intelligence platform that helps you drive better-informed decisions and actions to optimize packaging operations.

Developed by Systech, Insight leverages the solutions already implemented in your factory to analyze and coordinate your resources with real-time, end-to-end data for a holistic view of production.

Unlock greater value in your investments

- ✓ Deploy automated tools for **hands-off time savings**.
- ✓ Transform your IT landscape from pieces of software to **peace of mind**.
- ✓ Enjoy data presented in an **easy to understand**, digestible format.
- ✓ Have information available to those **who** need it **when** they need it.
- ✓ Get more **value** from your regulatory packaging data.
- ✓ Make your packaging operations **better**.

Powerful business insight



Performance assurance

Real-time monitoring of line performance KPIs

- Receive line-level metrics from packaging—continuously and securely
- Consolidate trends of production line operations to drive informed decisions
- Identify root causes for needed line corrective actions sooner, minimizing downtime



GMP audit assistance

Digitize compliance with no manual data collection or processes

- Consolidate digitized batch data to create a GMP audit-ready repository
- Transmit and store FDA 21 CFR part 11 compliant audit records to a central secure location
- Reduce time preparing audit readiness to deliver error-free GMP reporting



Operate anywhere

Remote operations for maximized efficiency

- View all packaging work order details for current and future jobs
- Review batch records and approve notification releases from anywhere without IT support
- Create, store and download line configuration archives on-demand or on a schedule

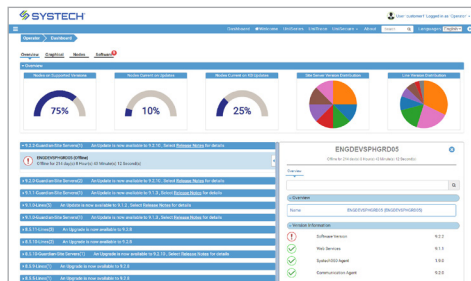
Full functionality in one powerful package

What does it cost your business to customize disparate systems? Imagine having all functionality in one package. With Systech Insight, you can leverage your existing investment to unlock additional value. Systech Insight collects and stores critical data with minimal effort for you to access when you need it, how you need it for smoother operations.

	Systech Insight	MES/Edge Solution	ERP	Data Historian	IT System
Real-time node monitoring	●	●			
Real-time production tracking	●	●			
Seamless integration to packaging lines	●	*		*	
Real-time system alerts	●	*			*
Integrated dashboards and data explorers	●	*		*	
Centralized production planning	●	●	●		
Centralized batch records	●		●		
L3-L4 notification monitoring	●		*		*
Disaster recovery	●				*
Secure file storage	●			●	
Centralized software management	●				

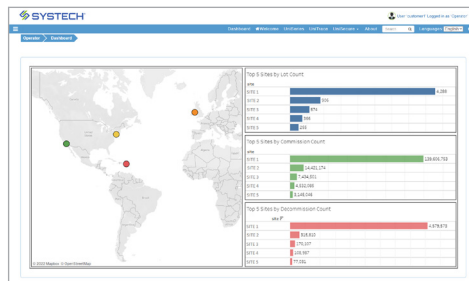
* Custom integration required

Visualize your packaging operations to drive better informed actions and decisions.



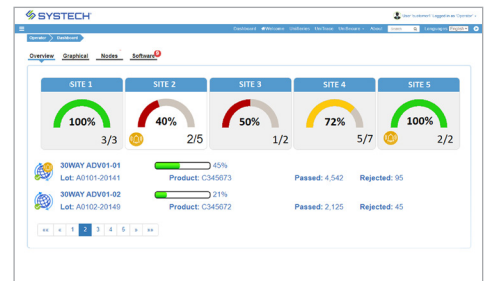
Software management

Consistent software versioning and proactive maintenance. Cuts upgrade planning by up to 80%.



Interactive dashboards

Gain insight into production and improve future state. No custom integration required. Packaging information is collected and available for immediate use.



Real-time batch progress monitoring

Visibility into every site, every line in one place. Reduce the number of progress requests to the packaging floor operators.

Systech Insight shifts your operations from reactive to proactive with agile systems focused on automation. Analyze and coordinate your resources with real-time end-to-end data for a holistic view of production. It provides up-to-date configuration archives and change control alignment—accelerating your business to an improved state.

Contact Systech to unlock greater business value today!



GET CONNECTED

+1 800 847 7123 (toll free)
+1 609 395 8400 (local)

SystechOne.com
Info@SystechOne.com

