



The MidChes housings and mounts are designed to complement the Bosch FLEXIDOME IP Panoramic 5000/6000/7000 series of 180° and 360° indoor and outdoor panoramic cameras when the field of view needs to be improved by providing an upward or downward angle.



BMT-70WAT

The BMT-70WAT accessory enables Bosch Outdoor FLEXIDOME 6000 and 7000 Series Panoramic Cameras (NDS-6004 and NDS-7004) to be mounted to a wall and provide rotation and tilt adjustment.



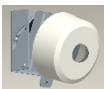
BMT-70SPA

The BMT-70SPA accessory enables Bosch cameras with pendant mount adapters to be mounted to a wall and provides rotation and tilt adjustment. The mount provides a 1.5-in NPT male thread. The mount is compatible with Bosch's modular universal mount system.



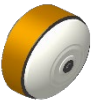
BMT-52WAT

The BMT-52WAT accessory enables Bosch FLEXIDOME IP Panoramic 5000 MP Camera to be mounted to a wall and provide rotation and tilt adjustment.



BMT-70T45

The BMT-70T45 accessory enables a variety of cameras to be installed on a flat surface and tilted to the desired angle. It is designed to accept the Bosch NDS-6004 and NDS-7004 series cameras. The mount is constructed of powder coated aluminum and includes stainless steel fasteners. It is also compatible with FLEXIDOME models 4000i and 5000i, and the Indoor Panoramic Dome model 7000 when used with the surface mount backbox VDA-70112-SMB.



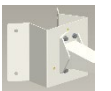
BMT-70A10

The BMT-70A10 accessories enables Bosch 7000 Indoor Series Panoramic Cameras to be mounted at an angle to a flat surface. The mount is constructed of powder coated aluminum with stainless steel fasteners. This mount can be attached to a Single or Double Gang Box or attached directly to a wall or ceiling.



BMT-comingsoon

The BMT-comingsoon accessories enables Bosch 6000 and 7000 Outdoor Series Panoramic Cameras to be mounted at an angle to a flat surface. The mount is constructed of powder coated aluminum with stainless steel fasteners. This mount can be attached to a Single or Double Gang Box or attached directly to a wall or ceiling.



BMT-70CM

The BMT-70CM accessory enables the BMT-70WAT, BMT-52WAT, and BMT-70SPA Adjustable Wall Arms, and BMT-70T45 Adjustable Tilt Bracket to be installed on the corner of a building. The mount is constructed of powder coated aluminum and includes stainless steel fasteners.



BMT-70PM

The BMT-70PM accessory enables the BMT-52WAT, BMT-70WAT, BMT-70SPA Adjustable Wall Arm, and BMT-70T45 Adjustable Tilt Bracket to be installed on a pole. The mount is constructed of powder coated aluminum with stainless steel straps. The straps enable installation on poles 3-8" in diameter.

Part Number	Description
BMT-70SPA	Wall Arm, Inverted, Adjustable, For Bosch 1.5-in NPT Pendant Caps
BMT-70WAT	Wall Arm, Inverted, Adjustable, For Bosch Outdoor 6000/7000 Series Panoramic Cameras; White
BMT-52WAT	Wall Arm, Inverted, Adjustable, For Bosch 5000 MP Panoramic Camera; White
BMT-70CM	Corner Mount for Adjustable Wall Arm and Tilt Bracket; White
BMT-70PM	Pole Mount for Adjustable Wall Arm and Tilt Bracket; White
BMT-70T45	Adjustable Tilt Bracket, Max 45-Degrees, for Bosch Panoramic Cameras; White
BMT-coming soon	Wedge Mount, 10-Degree, for Bosch 7000 MP Outdoor Panoramic Cameras; White
BMT-70A10	Wedge Mount, 10-Degree, for Bosch 7000 MP Indoor Panoramic Cameras; White



Order Now



+1 410 612 9640

