



MILLER at WORK



* All items and prices are available on the NC State Contract*
NC State Contract 420A Furniture all Types Bid # 201400059
GA State Contract #99999-SPD0000100
Alabama State Contract # 4012012 for T390 / 2233882

***End User
Price List***



Timeless Values. Innovative Design.

Welcome to Miller at Work, a new breed of office furnishings supplier with strong industry bloodlines. Building on decades of success as Miller Desk – a recognized leader in quality, value and service – we offer you the perfect synthesis of innovative design, cutting-edge technology and old-fashioned values. At Miller, we believe in family. That is why our entire seating collection is named after members of our family. Located in the heart of the furniture capital of the world – High Point, NC you get unmatched quality while knowing we are supporting our community and country. The Felix chair is name after the Miller brother’s father Felix Miller Jr. who believed in engineering products that would perform under the test of time and patented and manufactured the first 500 lbs 24/7 ergonomic chair in 1991. The Miller family has been in the furniture business for over 70 years. Beginning in the 40’s and 50’s with Felix Miller Sr. our grandfather sold and serviced wood working machinery. In 1971 Miller Desk Company was created to service the office furniture industry with the highest of quality, by manufacturing desk and office furniture. In 2008 Miller at Work was established and is a continuation of superior products and work ethics from Miller Desk.

Miller at Work has the capacity to produce specific features in seating, which has made our 24/7; Big and Tall heavy-duty seating explode throughout the industry. We heard what you had to say, and we made it happen. Our seating offers a vast array of sizes and weight limits that can accommodate anyone. We have worked hard to earn the trust in the intensive use industry, now that we have done that we are taking that same approach to offer the same high quality craftsmanship from our 24/7 seating to a new non 24/7 seating line.

We have a motto here at Miller at Work and it is “A Tradition Of Listening”, to us it is more than just a motto it is a way of life. That is why our products are so unique because we **LISTEN**.

Sincerely,

Max Miller
Max Miller
President / Owner



MILLER at WORK, LLC

mailing address: PO Box 5508 • High Point, NC 27262
shipping: 1810 Albertson Rd. • High Point, NC 27260
at work: 336.883.1302 • on paper: 336.883.1304
www.milleratwork.com

What's in a model number?

Here at Miller at Work we have a specific way of doing our model numbers so that it makes it easier for customers to understand.

The first 3 to 4 digits of the model number is the actual model number for the chair, the next two digits are to specify the arms, the next two digits specify the base, the next two digits specify the mechanism and the last two digits are the width of the seat.

Example:

Model# of chair → 1697-16-5-31-21 ← Seat Width
 Arm Base Mechanism

Bases

#1 Heavy duty 5 Prong low profile black base



#2 Heavy duty 5 Prong low profile black base



#3 Heavy duty 6 Prong black base



#5 Heavy duty 5 Prong low profile polished aluminum base



Arms

#4 Height adjustable arm



#9 Fixed C arm polished aluminum



#10 Fixed C arm Black



#16 Height and Width adjustable sliding arm (Gel Arm Pad slides front to back)



Mechanisms

*Multifunction Mech: #31 7 Position control

- 1) Fingertip height adjustment
- 2) Forward tilt seat adjustment
- 3) Level seat angle
- 4) Backward seat angle adjustment
- 5) Side mounted tension control activation rotating wheel
- 6) Forward tilt back angle adjustment
- 7) Back tilt backward adjustment with infinite lock

*Advanced Control: #32

- 1) 2 to 1 knee tilt
- 2) Back is independent from seat
- 3) Back locks in upright position or free float
- 4) Tension Control

*Maxine Only: #34

- 1) Swivel only

*Rocking Mech: #35

- 1) Knee tilt
- 2) Infinite angle lock
- 3) Side mounted tension control
- 4) Seat depth adjustment

*Synchro Tilt: #36

- 1) Infinite lock
- 2) Side mount tension control

*Mid-Pivot: #37

- 1) With tilt lock

**270 lbs
Chair**



1699-9-5-37-21 High Back
BH from seat 29.5"
Seat Height from floor: 16" - 20"
Adjustable Seat Depth: 17" - 19.5"
Seat Width: 21"
(will accommodate a 6'6" person)
Shown in Dillon Lipstick



1698-9-5-37-21 Medium Back
BH from seat 26.75"
Seat Height from floor: 16" - 20"
Adjustable Seat Depth: 17" - 19.5"
Seat Width: 21"
(will accommodate a 6'1" person)
Shown in Dillon Black



1697-9-5-37-21 Low Back
BH from seat 24"
Seat Height from floor: 14" - 18"
Adjustable Seat Depth: 17" - 19.5"
Seat Width: 21"
(will accommodate a 4'10" - 5' 4" person)
Shown in Dillon Williamsburg



1799-16-2-32-23 High Back
BH from seat: 29.5"
Seat Height from floor: 16" - 20"
Seat Depth: 19"
Seat Width: 23"
(will accommodate a 6'6" person)
Shown in Dillon Black



1798-16-2-32-23 Medium Back
BH from seat: 26.75"
Seat Height from floor: 16" - 20"
Seat Depth: 19"
Seat Width: 23"
(will accommodate a 6'1" person)
Shown in Dillon Cordovan



1797-16-2-32-23 - Low Back
BH from seat: 24"
Seat Height from floor: 16" - 20"
Seat Depth: 19"
Seat Width: 23"
(will accommodate a 4'10" to 5'4" person)
Shown in Dillon Apple Sage

**400 lbs
Chair**

- Family owned business - made in High Point, NC.
- Ships fully assembled.
- Lifetime warranty on frame construction, heavy duty 3/8" tempered steel J - Bar.
- **Normal wear and tear on upholstery is not covered under warranty.**
- 10 year warranty on HD Gas Cylinder, arm mechanism, chair mechanism, base and foam.
- 5 prong HD metal polished aluminum base standard.
- 60mm HD casters standard, 75mm optional, no upcharge.
- PVC free / Bleach cleanable (only applicable on Vinyls).

• **Kool Memory Foam** in all cushions.

- Mechanisms available:
400 lbs heavy duty synchro tilt with 5 year warranty. (Advanced control)
280 lbs heavy duty synchro tilt with 10 year warranty. (Multi Function)
- Optional arms:
4 - Height adjustable
9 - Fixed C arm polished aluminum
10 - Fixed C arm black
#16 - Height and Width adjustable - gel pad slides front to back.
- Optional bases:
#1 Heavy duty 5 Prong low profile black base
#2 Heavy duty 5 Prong low profile black base
#3 Heavy duty 6 Prong black base (upcharge)
#5 Heavy duty 5 Prong low profile polished aluminum base
- **2 million product liability insurance per incident.**

Felix

Max Miller
 maxmiller@mawhp.com
 336-964-5490

50% deposit balance due when ready to ship
 Prepaid in full, get a 2% discount

Place orders at orders@mawhp.com
Kool Foam standard on all Non 24/7 models

Felix

270 lbs series

	NON 24/7 Seating	Arms			Fabric	COM / COL Vinyl	Leather
1697-4-1-37-21	Low back	Mid Pivot Mech.	Height Adj.	Will accom. a 4'8"-5'8" person	\$980.00	\$1,050.00	\$1,372.00
1697-16-1-37-21-M	Low back/ Mesh Seat	Mid Pivot Mech.	H&W - Sliding	Will accom. a 4'8"-5'8" person	\$980.00	\$1,050.00	\$1,372.00
1697-9-5-37-21	Low back	Mid Pivot Mech.	Polished Alum C	Will accom. a 4'8"-5'8" person	\$980.00	\$1,050.00	\$1,372.00
1697-16-5-37-21-M	Low back/ Mesh Seat	Mid Pivot Mech.	H&W - Sliding	Will accom. a 4'8"-5'8" person	\$980.00	\$1,050.00	\$1,372.00
1698-4-1-37-21	Medium back	Mid Pivot Mech.	Height Adj.	Will accom. a 4'8"-6'0" person	\$1,050.00	\$1,120.00	\$1,533.00
1698-16-1-37-21-M	Med. Back / Mesh seat	Mid Pivot Mech.	H&W - Sliding	Will accom. a 4'8"-6'0" person	\$1,050.00	\$1,120.00	\$1,533.00
1698-9-5-37-21	Medium back	Mid Pivot Mech.	Polished Alum C	Will accom. a 4'8"-6'0" person	\$1,050.00	\$1,120.00	\$1,533.00
1698-16-5-37-21-M	Med. Back / Mesh seat	Mid Pivot Mech.	H&W - Sliding	Will accom. a 4'8"-6'0" person	\$1,050.00	\$1,120.00	\$1,533.00
1699-4-1-37-21	High Back	Mid Pivot Mech.	Height Adj.	Will accom. up to a 6'6" person	\$1,190.00	\$1,260.00	\$1,610.00
1699-16-1-37-21-M	High Back / Mesh seat	Mid Pivot Mech.	H&W - Sliding	Will accom. up to a 6'6" person	\$1,190.00	\$1,260.00	\$1,610.00
1699-9-5-37-21	High Back	Mid Pivot Mech.	Polished Alum C	Will accom. up to a 6'6" person	\$1,190.00	\$1,260.00	\$1,610.00
1699-16-5-37-21-M	High Back / Mesh seat	Mid Pivot Mech.	H&W - Sliding	Will accom. up to a 6'6" person	\$1,190.00	\$1,260.00	\$1,610.00
1700-4-1-37-21	Ex. Tall back	Mid Pivot Mech.	Height Adj.	Will accom. up to a 6'10" person	\$1,330.00	\$1,400.00	\$1,890.00
1700-16-1-37-21-M	Ex. Tall back/Mesh seat	Mid Pivot Mech.	H&W - Sliding	Will accom. up to a 6'10" person	\$1,330.00	\$1,400.00	\$1,890.00
1700-9-5-37-21	Ex. Tall back	Mid Pivot Mech.	Polished Alum C	Will accom. up to a 6'10" person	\$1,330.00	\$1,400.00	\$1,890.00
1700-16-5-37-21-M	Ex. Tall back/Mesh seat	Mid Pivot Mech.	H&W - Sliding	Will accom. up to a 6'10" person	\$1,330.00	\$1,400.00	\$1,890.00

Felix

Kool Foam standard on all Non 24/7 models

400 lbs series

	24/7 Seating	Arms			Fabric	COM / COL Vinyl	Leather
1797-16-2-32-23	Low back	Advanced Control	H&W - Sliding	Will accom. a 4'8"-5'8" person	\$1,260.00	\$1,400.00	\$1,540.00
1797-9-2-32-23	Low back	Advanced Control	Polished Alum C	Will accom. a 4'8"-5'8" person	\$1,260.00	\$1,400.00	\$1,540.00
1798-16-2-32-23	Medium back	Advanced Control	H&W - Sliding	Will accom. a 4'8"-6'0" person	\$1,400.00	\$1,540.00	\$1,680.00
1798-9-2-32-23	Medium back	Advanced Control	Polished Alum C	Will accom. a 4'8"-6'0" person	\$1,400.00	\$1,540.00	\$1,680.00
1799-16-2-32-23	High back	Advanced Control	H&W - Sliding	Will accom. a 4'8"-6'6" person	\$1,540.00	\$1,680.00	\$1,820.00
1799-9-2-32-23	High back	Advanced Control	Polished Alum C	Will accom. a 4'8"-6'6" person	\$1,540.00	\$1,680.00	\$1,820.00
1800-16-2-32-23	Ex. Tall back	Advanced Control	H&W - Sliding	Will accom. up to a 6'10" person	\$1,680.00	\$1,820.00	\$1,960.00
1800-9-2-32-23	Ex. Tall back	Advanced Control	Polished Alum C	Will accom. up to a 6'10" person	\$1,680.00	\$1,820.00	\$1,960.00
Enhancements:	Long Slip Cover w/ or w/logo		\$100.00	Seat slip cover	\$56.00		
	Lumbar Pillow		\$84.00	Back Slip Cover	\$56.00		
	Neck Roll Cushion		\$65.00	6 prong heavy duty base (#3)	\$126.00		
	Back bumper guard		\$80.00	#9 & #4 arm pads per pair	\$30.00		
	Casters each		\$5.00	Arm Pad 16 arm (per pair)	\$30.00		
	specify 75 or 55 mm carpet or solid flooring		N/C	No Arms specify in model# -0-	-\$25.00		
	Optional # 10 black C arm		N/C	Kool Foam Seat Pads (blk fabric)	\$48.00		
	Black, Red, Blue & Beige stitching available must specify		N/C	Kool Foam Back Pads (blk fabric)	\$65.00		

Prices do not included shipping cost/FOB High Point, NC

All chairs ship fully assembled

Must specify hard floor or soft floor casters for chairs

Leather clean with soap and water, then use a leather conditioner 3 times a year to keep supple

10 year warranty on all parts except for arm pads, casters and upholstery. Lifetime warranty on frame construction & base Normal wear and tear not included

Black, Beige, Red and Blue stitching available



Non 24/7 Seating 40hr work week

5 year warranty



Shown with optional neck roll and lumbar cushion

**270 lbs
Chair**

3294-4-5-36-21-HR

User size 4'10" - 5'10"

Maximum weight: 270 lbs

Seat Height from floor: 16" - 20" (with headrest add 6")

Seat Depth: 16" - 18.5"

Seat Width: 21"

Dillon Lipstick

**270 lbs
Chair**

3394-4-5-36-21

User size 4'10" - 5'10"

Maximum weight: 270 lbs

Seat Height from floor: 16" - 20"

Seat Depth: 16" - 18.5"

Seat Width: 21"

Dillon Balsa



3194-16-5-31-21-HR

User size 5'4" - 5'10"

Maximum weight: 270 lbs

Seat Height from floor: 16" - 20" (with headrest add 6")

Seat Depth: 16" - 18.5"

Seat Width: 21"

All Mesh



ALL MESH

Marcella

Max Miller
maxmiller@mawhp.com
336-964-5490

50% deposit balance due when ready to ship
Prepaid in full, get a 2% discount

Place orders at orders@mawhp.com
Kool Foam standard on all Non 24/7 models

Marcella

	NON 24/7 Seating		Arms			All Mesh			
							Fabric	COM / COL Vinyl	Leather
3194-16-5-31-21	Mid Back	Multi-Function	H&W - Sliding	270 lbs	Mesh Back and seat	\$812.00			
3294-4-1-37-21	Mid Back	Mid Pivot Mech.	Height Adj.	270 lbs	Mesh back/Uph seat	\$685.00	\$699.00	\$900.00	
3294-9-5-37-21	Mid Back	Mid Pivot Mech.	Polished Alum C	270 lbs	Mesh back/Uph seat	\$685.00	\$699.00	\$900.00	
3294-4-1-36-21	Mid Back	Synchro Tilt	Height Adj.	270 lbs	Mesh back/Uph seat	\$800.00	\$840.00	\$1,000.00	
3294-9-5-36-21	Mid Back	Synchro Tilt	Polished Alum C	270 lbs	Mesh back/Uph seat	\$800.00	\$840.00	\$1,000.00	
3397-4-1-37-21	Low Back	Mid Pivot Mech.	Height Adj.	270 lbs	Fully Upholstered	\$820.00	\$868.00	\$1,200.00	
3397-9-5-37-21	Low Back	Mid Pivot Mech.	Polished Alum C	270 lbs	Fully Upholstered	\$820.00	\$868.00	\$1,250.00	
3398-4-1-37-21	Med Back	Mid Pivot Mech.	Height Adj.	270 lbs	Fully Upholstered	\$850.00	\$898.00	\$1,230.00	
3398-9-5-37-21	Med Back	Mid Pivot Mech.	Polished Alum C	270 lbs	Fully Upholstered	\$850.00	\$898.00	\$1,280.00	
3399-4-1-36-21	High Back	Synchro Tilt	Height Adj.	270 lbs	Fully Upholstered	\$873.60	\$1,030.40	\$1,350.00	
3399-9-5-36-21	High Back	Synchro Tilt	Polished Alum C	270 lbs	Fully Upholstered	\$896.00	\$1,030.40	\$1,400.00	
Enhancements:	5 prong high profile base (#5)		N/C	Arm Pad 16 arm (per pair)		\$30.00			
	Bumper Guard -BG-		\$80.00	#16 Arm must specify in model # 16		\$75.00			
	Mesh Headrest (Suffix -HR)		\$100.00	6 prong heavy duty base (#3)		\$126.00			
	Large Neck Roll Cushion		\$65.00	Smaller Neck Roll Cushion		\$55.00			
	specify 75 or 55 mm carpet or solid flooring		N/C	Lumbar Pillow		\$75.00			
	Back Slip Cover for Logo ea. Chair		\$85.00	No Arms specify in model# -0-		-\$25.00			
	On time Embroidery Setup for Back Slip Cover		\$120.00	Kool Foam Seat Pads (blk fabric)		\$48.00			
	Black, Red, Blue & Beige stitching available must specify		N/C	Kool Foam Back Pad (blk fabric)		\$65.00			

Prices do not included shipping cost/FOB High Point, NC

* Must specify hard floor or soft floor casters for chairs*

5 year warranty on all parts except arm pads, casters, upholstery

Height adjustable back, ships assembled



3294-16-5-31-21-HR-Lumbar pillow

Black, Beige, Red and Blue stitching available



Marcella chair shown with logo on slip cover

Non 24/7 Seating 40hr work week

M axine



270 lbs Chair



778-4-5-37-21
Dillon Nimbus



779-16-5-37-21
Dillon Mesh Blk w/headrest



778-4-1-37-21

W - 30"
D - 24"
H - 40" - 45"
SW - 21"
SD - 19"
SH - 17" - 24"

Maxine

270 lbs	NON 24/7 Seating	Arms	Mechanism	Fabric	COM / COL Vinyl	Leather	
778-4-1-37-21	Mesh Back / Uph Seat	Height Adj.	270 lbs	Mid Pivot Mech.	\$495.00	\$520.00	\$600.00
778-9-1-37-21	Mesh Back / Uph Seat	Polished C	270 lbs	Mid Pivot Mech.	\$495.00	\$520.00	\$600.00
778-4-5-37-21	Mesh Back / Uph Seat	Height Adj.	270 lbs	Mid Pivot Mech.	\$525.00	\$545.00	\$625.00
778-9-5-37-21	Mesh Back / Uph Seat	Polished C	270 lbs	Mid Pivot Mech.	\$525.00	\$545.00	\$625.00
All mesh							
779-16-1-37-21	Mesh Back and Seat	H&W - Sliding			\$575.00		
779-16-5-37-21	Mesh Back and Seat	H&W - Sliding			\$575.00		
Enhancements:	One time Embroidery Setup	\$120.00	Black C Arm #10 must denote	-\$10.00			
	Embroidery logo ea chair	\$80.00	Optional Vinyl Headrest	\$100.00			
	Optional # 16 arm	\$50.00					
	Casters each	\$5.00	Arm Pad 16 arm (per pair)	\$30.00			
	specify 75 or 55 mm carpet or solid flooring	N/C	#9 & # 4 arm pads per pair	\$30.00			
	Hard Floor Locking Casters ea. (sitting)	\$5.00	No Arms specify in model# -0-	-\$25.00			
	Optional Sychro tilt w/ Infinite angle lock	\$75.00	Kool Foam Seat Pads	\$48.00			

Shown in
Winslow Moonbeam



270 lbs Chair

W - 30"
D - 24"
H - 47" - 58"
SW - 23"
SD - 19"
SH - 24" - 35"



Shown in all mesh

Maxine Stool

	NON 24/7 Seating	Arms	Fabric	COM / COL Vinyl	Leather		
777-4-1-34-21	Low / Uph. back	Swivel Only	Height Adj.	270 lbs	\$700.00	\$750.00	\$850.00
777-9-1-34-21	Low / Uph. back	Swivel Only	Polished Alum C	270 lbs	\$700.00	\$750.00	\$850.00
777-10-1-34-21	Low / Uph. back	Swivel Only	Black C Arm	270 lbs	\$700.00	\$750.00	\$850.00
All Mesh							
778-16-1-34-21	All Mesh	Swivel Only	H&W - Sliding	270 lbs	\$808.50		
Enhancements:	On time Embroidery Setup	\$120.00	Seat slip cover	\$56.00			
	Embroidery logo ea chair	\$80.00	Back Slip Cover	\$56.00			
	Casters each	\$5.00	6 prong heavy duty base #3	\$126.00			
	specify 75 or 55 mm carpet or solid flooring	N/C	Arm Pad 16 arm (per pair)	\$30.00			
	Hard Floor Locking Casters ea. (not sitting)	\$5.00	#9 & # 4 arm pads per pair	\$30.00			
	Hard Floor Locking Casters ea. (sitting)	\$5.00	No Arms specify in model# -0-	-\$25.00			
			Optional Vinyl Headrest	\$100.00			
	Optional # 5 black base	N/C	Kool Foam Seat Pads	\$48.00			

Non 24/7 Seating 40hr work week

Lucy



Lucy

270 lbs

	Stacking			Fabric	COM / COL Vinyl	Leather
40	Sled base		Armless	\$89.00	\$99.00	\$140.00
40A	Sled base		With Arms	\$119.00	\$129.00	\$160.00
41	Leg Base		Armless	\$89.00	\$99.00	\$140.00
41A	Leg Base		With Arms	\$119.00	\$129.00	\$160.00



Sally

Sally

350 lbs

	Guest Chair			Fabric	COM / COL Vinyl	Leather
332			Fixed Arms	\$320.00	\$340.00	\$600.00

Skylar



Skylar

270 lbs

Side Chair

Fabric COM / COL Vinyl Leather

50	legs		Arms		\$139.00	\$149.00	\$199.00
50A	w/ casters		With Arms		\$173.00	\$180.00	\$300.00

Skylar

270 lbs

Side Chair

Stock Fabric

51			Arms	Black, Blue, Red, Grey	\$100.00		

Prices do not include shipping cost/FOB High Point, NC

All chairs ship fully assembled

* Must specify hard floor or soft floor casters for chairs*

Leather clean with soap and water, then use a leather conditioner 3 times a year to keep supple

Chelsea



Chelsea

270 lbs

Stacking

Non Uph

400	Arm less		Armless		\$110.00		
400	Ships 6 per box		With Arms		\$129.00		

Cynthia



CY-001-WL

W	D	H	SH	SW	SD
32	31	33	17.5	23	19.5



CY-003-WL

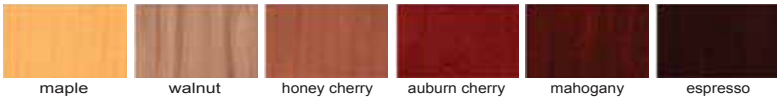
W	D	H	SH	SW	SD
57	31	33	17.5	45	19.5



CY-004-WL

W	D	H	SH	SW	SD
72	31	33	17.5	68	19.5

Black, Beige, Red and Blue stitching available



Customer's Own Finish. Leaving the creativity up to you.
Provide us with a color chip or wood sample and we'll match your finish at no additional charge.

A TRADITION OF LISTENING

MILLERATWORK.COM

336.883.1302



Cynthia

Club Chair

						Fabric	COM / COL Vinyl	Leather
CY-001-WL	Wooden Legs			300 lbs		\$845.00	\$1,040.00	\$1,885.00

Love Seat

						Fabric	COM / COL Vinyl	Leather
CY-002-WL	Wooden Legs			850 LBS		\$1,235.00	\$1,560.00	\$2,730.00

Sofa

						Fabric	COM / COL Vinyl	Leather
CY-003-WL	Wooden Legs			950 lbs		\$1,560.00	\$1,930.00	\$3,770.00
Accessories:		Embroidery Setup	\$120.00					
		Embroidery logo ea chair	\$80.00					

Prices do not included shipping cost/FOB High Point, NC
* Must specify hard floor or soft floor casters for chairs*

Frame Construction made with hardwoods and plywood, with lifetime warranty. Foam Warranty 5 years. Upholstery not included.

Non 24/7 Seating 40hr work week

Philo



Black, Beige, Red and Blue stitching available



	W	D	H	SH	SW	SD
CLUB PH-001	32	31	33	17.5	23	19.5
LOVE SEAT PH-004	57	31	33	17.5	45	19.5
SOFA PH-005	72	31	33	17.5	68	19.5

Finish Options



Customer's Own Finish. Leaving the creativity up to you.
Provide us with a color chip or wood sample and we'll match your finish at no additional charge.

Philo

Club Chair		NON 24/7 Seating				Fabric	COM / COL Vinyl	Leather
PH-001-WL	Wooden Legs			300 lbs		\$845.00	\$1,040.00	\$1,885.00
PH-001-WLWT	Wooden Legs	Wooden Tablet		300 lbs		\$986.66	\$1,186.66	\$2,053.32
PH-001-CST-BP	Front casters	Back Pull		300 lbs		\$986.66	\$1,186.66	\$2,053.32
PH-001-ML	Metal Alum. Legs			300 lbs		\$986.66	\$1,186.66	\$2,053.32
PH-001-4CST	Four Casters			300 lbs		\$986.66	\$1,186.66	\$2,053.32
PH-006	OTTOMAN					\$520.00	\$550.00	\$960.00

Love Seat		NON 24/7 Seating				Fabric	COM / COL Vinyl	Leather
PH-003-WL	Wooden Legs			500 lbs		\$1,235.00	\$1,560.00	\$2,730.00
PH-003-ML	Metal Alum. Legs			500 lbs		\$1,235.00	\$1,560.00	\$2,730.00

Sofa		NON 24/7 Seating				Fabric	COM / COL Vinyl	Leather
PH-004-WL	Wooden Legs			950 lbs		\$1,560.00	\$1,930.00	\$3,770.00
PHL-004-ML	Metal Alum. Legs			950 lbs		\$1,560.00	\$1,930.00	\$3,770.00
Accessories:		Embroidery Setup		\$120.00				
		Embroidery logo ea chair		\$80.00				

Frame Construction made with hardwoods and plywood, with lifetime warranty. Foam Warranty 5 years. Upholstery not included.

Prices do not included shipping cost/FOB High Point, NC

* Must specify hard floor or soft floor casters for chairs*

Dorothy



DO-001

W	D	H	SD	SH	SW
40	35	37	21	20	20



DO-002

W	D	H	SD	SH	SW
62	35	37	21	20	42

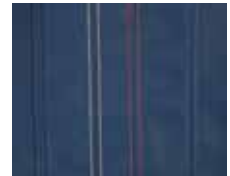


DO-003

W	D	H	SD	SH	SW
83	35	37	21	20	63



Black, Beige, Red and Blue stitching available



Customer's Own Finish. Leaving the creativity up to you.

Provide us with a color chip or wood sample and we'll match your finish at no additional charge.

Dorothy

Club Chair	NON 24/7 Seating					Fabric	COM / COL Vinyl	Leather
DO-001-WL	Wooden Legs			300 lbs		\$845.00	\$1,040.00	\$1,885.00

Love Seat	NON 24/7 Seating					Fabric	COM / COL Vinyl	Leather
DO-002-WL	Wooden Legs			850 LBS		\$1,235.00	\$1,560.00	\$2,730.00

Sofa	NON 24/7 Seating					Fabric	COM / COL Vinyl	Leather
DO-003-WL	Wooden Legs			950 lbs		\$1,560.00	\$1,930.00	\$3,770.00

Accessories:	Embroidery Setup	\$120.00
	Embroidery logo ea chair	\$80.00

Prices do not include shipping cost/FOB High Point, NC

* Must specify hard floor or soft floor casters for chairs*

Frame Construction made with hardwoods and plywood, with lifetime warranty. Foam Warranty 5 years. Upholstery not included.

Non 24/7 Seating 40hr work week

Zeno

300 lbs Chair



Zeno

Logo included no upcharge

300 lbs series

					Fabric	COM/COL Vinyl	Leather
5000	XL Recliner		300 lbs		\$2,112.50	\$2,362.50	\$3,125.00

5000 Heavy Duty Recliner
 Shown in Dillon Black
 BH from seat: 30"
 Seat Depth: 22.5"
 Seat Width: 23"
 Overall Size:
 33" Deep
 40" Wide
 42" Tall

Zeno

300 lbs Chair



Zeno

Logo included no upcharge

300 lbs series

				Fabric	COM/COL Vinyl	Leather
5000	XL Recliner		300 lbs	\$2,112.50	\$2,362.50	\$3,125.00

5000 Heavy Duty Recliner

Shown in Dillon Black

BH from seat: 30"

Seat Depth: 22.5"

Seat Width: 23"

Overall Size:

33" Deep

40" Wide

42" Tall

Non 24/7 Seating 40hr work week

24/7 Intensive use Seating



What's in a model number?

Here at Miller at Work we have a specific way of doing our model numbers so that it makes it easier for customers to understand. The first 3 to 4 digits of the model number is the actual model number for the chair, the next two digits are to specify the arms, the next two digits specify the base, the next two digits specify the mechanism and the last two digits are the width of the seat.

Example:

Model# of chair → **697-16-8-31-21** ← Seat Width
↑ ↑ ↑
 Arm Base Mechanism

Bases

5 Prong heavy duty low profile black base #2



Heavy Duty 6 prong black base #3



5 Prong heavy duty low profile polished aluminum base #8



Arms

#16 Height and Width adjustable sliding arm (Gel Arm Pad slides front to back)



#15 Fixed T-Arm



#16 Height adjustable and arm pad slides front to back (All mesh seats only)



Mechanisms

*Multifunction Mech: #31 7 Position control

- 1) Fingertip height adjustment
- 2) Forward tilt seat adjustment
- 3) Level seat angle
- 4) Backward seat angle adjustment
- 5) Side mounted tension control activation rotating wheel
- 6) Forward tilt back angle adjustment
- 7) Back tilt backward adjustment with infinite lock

*Advanced Control: #32

- 1) 2 to 1 knee tilt
- 2) Back is independent from seat
- 3) Back locks in upright position or free float
- 4) Tension Control

*Tank Only: #34

- 1) Swivel only

*Rocking Mech: #35

- 1) Knee tilt
- 2) Infinite angle lock
- 3) Side mounted tension control
- 4) Seat depth adjustment

*Synchro Tilt: #36

- 1) Infinite lock
- 2) Side mount tension control



600 lbs Chair

6000-15-3-34-23 Medium Back
 BH from seat: 26.75"
 Seat Height from floor: 16" - 20"
 Seat Depth: 19"
 Seat Width: 23"
 (will accommodate a 6'1" person)
 Shown in Lipstick



6001-15-3-34-23 High Back
 BH from seat: 29.5"
 Seat Height from floor: 16" - 20"
 Seat Depth: 19"
 Seat Width: 23"
 (will accommodate a 6'6" person)
 Shown in Lipstick



No charge on all Felix Chairs for Custom Embroidered Logos

- Family owned business - made in High Point, NC.
- Ships fully assembled.
- Lifetime warranty on frame construction, heavy duty 3/8" tempered steel J - Bar.
- **Normal wear and tear on upholstery is not covered under warranty.**
- 3 year warranty on HD Gas Cylinder, arm mechanism, chair mechanism, base and foam.
- 6 prong heavy duty base standard.
- 75mm HD casters standard.
- PVC free / Bleach cleanable (only applicable on Vinyls).

- **Kool Memory Foam** in all cushions.
 - Mechanism: 600 lbs heavy duty Swivel & Height adjustable only, 3 year warranty.
- **No Tilting Mechanism**
- Optional arms: #18 - Fixed T-Arm
 - High back standard with neck roll cushion & lumbar pillow. (Felix chairs only)
 - Medium and low back standard with lumbar pillow. (Felix chairs only)
- **2 million product liability insurance per incident.**

Max Miller
maxmiller@mawhp.com
336-964-5490

50% deposit, Net 15
Prepaid in full, get a 2% discount

Place orders at orders@mawhp.com
Kool Foam standard on all 24/7 models

Felix

Logo included no upcharge

600 lbs series

	24/7 Seating		Arms		Fabric	COM/COL Vinyl	Leather
6000-15-3-34-23	Medium back	Swivel & Height Adj. Only	Fixed Arm Height	Will accom. a 4'8"-6'0" person	\$2,650.00	\$2,850.00	\$3,350.00
6001-15-3-34-23	High Back	Swivel & Height Adj. Only	Fixed Arm Height	Will accom. up to a 6'6" person	\$2,850.00	\$3,050.00	\$3,550.00
Enhancements:	Long Slip Cover w/ or w/logo		\$100.00	Seat slip cover	\$56.00		
	Lumbar Pillow		\$84.00	Back Slip Cover	\$56.00		
	Neck Roll Cushion		\$65.00	T-Arm Cap Vinyl Cover per pair	\$50.00		
	Bumper guard (Back bumper guard)(suffix -BG)		\$100.00	No Arms specify in model# -0-	-\$25.00		
	Casters each		\$5.00	Kool Foam Seat Pads (blk fabric)	\$48.00		
	specify 75 or 55 mm carpet or solid flooring		N/C	Kool Foam Back Pads (blk fabric)	\$65.00		
	Black, Red and Beige stitching available must specify		N/C	Bumper Guard -BG	\$80.00		

Prices do not included shipping cost/FOB High Point, NC

All 24/7 chair ships fully assembled

Leather - clean with soap and water, then use a leather conditioner 3 times a year to keep supple

Warranty: 3 years on gas cylinder, Lifetime on base, arm metal structure. No warrant on seat foam.

Kool Foam Seat and Back pads standard on 600lb Felix.





Shown with neck roll cushion and lumbar pillow. Standard at no upcharge on high back chair.

500 lbs Chair

699-20-3-32-21
 BH from seat 29.5"
 Seat Height from floor: 16" - 20"
 Adjustable Seat Depth: 17" - 19.5"
 Seat Width: 21"
 (will accommodate a 6'6" person)
 Shown in Dillon Luggage



698-20-3-32-21
 BH from seat 26.75"
 Seat Height from floor: 16" - 20"
 Adjustable Seat Depth: 17" - 19.5"
 Seat Width: 21"
 (will accommodate a 6'1" person)
 Shown in Dillon Cordovan

Both shown with lumbar pillow standard.



697-20-3-32-21
 BH from seat 24"
 Seat Height from floor: 14" - 18"
 Adjustable Seat Depth: 17" - 19.5"
 Seat Width: 21"
 (will accommodate a 4'10" - 5'4" person)
 Shown in Dillon Fiesta



500 lbs Chair

799-20-3-32-23 High Back
 BH from seat: 29.5"
 Seat Height from floor: 16" - 20"
 Seat Depth: 19"
 Seat Width: 23"
 (will accommodate a 6'6" person)
 Shown in Dillon Thunder



798-20-3-32-23 Medium Back
 BH from seat: 26.75"
 Seat Height from floor: 16" - 20"
 Seat Depth: 19"
 Seat Width: 23"
 (will accommodate a 6'1" person)
 Shown in Dillon Apple Sage

Both shown with lumbar pillow standard.



797-20-3-32-23 - Low Back
 BH from seat: 24"
 Seat Height from floor: 16" - 20"
 Seat Depth: 19"
 Seat Width: 23"
 (will accommodate a 4'10" to 5'4" person)
 Shown in Dillon Lipstick

No charge on all Felix Chairs for Custom Embroidered Logos

- Family owned business - made in High Point, NC.
- Ships fully assembled.
- Lifetime warranty on frame construction, heavy duty 3/8" tempered steel J - Bar.
- **Normal wear and tear on upholstery is not covered under warranty.**
- 5 year warranty on HD Gas Cylinder, arm mechanism, chair mechanism, base and foam.
- 6 prong heavy duty base optional with upcharge.
- 60mm HD casters standard, 75mm optional, no upcharge.
- PVC free / Bleach cleanable (only applicable on Vinyls).

- **Kool Memory Foam** in all cushions.
 - Mechanisms available:
 - 500 lbs heavy duty synchro tilt with 5 year warranty. (Advanced control)
 - Optional arms:
 - #19 Height and Width adjustable heavy duty arm.
 - #20 Fixed reinforced steel heavy duty arm.

High back standard with neck roll cushion & lumbar pillow. (Felix chairs only)
 Medium and low back standard with lumbar pillow. (Felix chairs only)

- **2 million product liability insurance per incident.**

Max Miller
 maxmiller@mawhp.com
 336-964-5490

*50% deposit, Net 15
 Prepaid in full, get a 2% discount*

Place orders at orders@mawhp.com

Kool Foam standard on all 24/7 models

Felix

*Logo, Neck & Lumbar cushions
 included no upcharge*

500 lbs series

	24/7 Seating		Arms		Fabric	COM/COL Vinyl	Leather
697-20-3-32-21	Low back	Advanced Control	Fixed	Will accom. a 4'8"-5'8" person	\$1,415.00	\$1,572.50	\$1,750.00
698-20-3-32-21	Medium back	Advanced Control	Fixed	Will accom. a 4'8"-6'0" person	\$1,488.50	\$1,650.00	\$1,850.00
699-20-3-32-21	High back	Advanced Control	Fixed	Will accom. up to a 6'6" person	\$1,656.50	\$1,824.50	\$1,950.00
700-20-3-32-21	Ex. Tall back	Advanced Control	Fixed	Will accom. up to a 6'10" person	\$1,908.50	\$1,992.50	\$2,050.00

Felix

Kool Foam standard on all 24/7 models

500 lbs series

	24/7 Seating		Arms		Fabric	COM/COL Vinyl	Leather
797-20-3-32-23	Low back	Advanced Control	Fixed	Will accom. a 4'8"-5'8" person	\$1,672.50	\$1,750.00	\$1,950.00
798-20-3-32-23	Medium back	Advanced Control	Fixed	Will accom. a 4'8"-6'0" person	\$1,777.50	\$1,830.00	\$2,000.00
799-20-3-32-23	High back	Advanced Control	Fixed	Will accom. up to a 6'6" person	\$1,882.50	\$1,950.00	\$2,050.00
800-20-3-32-23	Ex. Tall back	Advanced Control	Fixed	Will accom. up to a 6'10" person	\$2,145.00	\$2,150.00	\$2,350.00
Enhancements:	Long Slip Cover w/ or w/logo		\$100.00	Seat slip cover	\$56.00		
	Lumbar Pillow		\$84.00	Back Slip Cover	\$56.00		
	Neck Roll Cushion		\$65.00	#19 & #20 arm pad (ea pair)	\$24.00		
	Bumper guard (Back bumper guard)		\$80.00	No Arms specify in model# -0-	-\$25.00		
	specify 75 or 55 mm carpet or solid flooring		N/C	Kool Foam Seat Pads (blk fabric)	\$48.00		
	Black, Red, Blue & Beige stitching available must specify		N/C	Kool Foam Back Pads (blk fabric)	\$65.00		
	Dispatcher of the year slip cover (specify which chair)		\$120.00	Casters each	\$5.00		
	Dispatcher of the month slip cover (specify which chair)		\$120.00	#19 arm H/W adjustable	\$75.00		

Prices do not included shipping cost/FOB High Point, NC

All 24/7 chair ships fully assembled

Leather - clean with soap and water, then use a leather conditioner 3 times a year to keep supple



*Chair shown with
 Kool Foam Seat Pad*

**Black, Beige, Red and Blue
 stitching available**



674-9-3-34-21

270 lbs Chair



680-19-8-34-21

Dillon Thunder

350 lbs Chair



675-19-2-34-21

W - 30"
D - 24"
H - 47" - 58"
SW - 21"
SD - 19"
SH - 24" - 35"

Shown in Dillon Luggage



696-19-3-34-23

500 lbs Chair

6 prong heavy duty base standard with no upcharge

W - 30"
D - 24"
H - 47" - 58"
SW - 23"
SD - 19"
SH - 24" - 35"

*Shown in Dillon Thunder
both chairs*



695-19-3-34-23

- Heavy Duty foot ring (Life time warranty)
- Heavy duty black metal 28" base width
- 75mm casters
- Swivel Only
- Pneumatic Lift
- Height and width adjustment on arms
- Maximum weight limit - 270lbs, 350 lbs & 500 lbs
- Lifetime Warranty on plywood frame, molded foam seat, back and foot ring, heavy duty 3/8" tempered steel J - Bar, arm mechanism, metal base & casters.
- 10 year warranty on mesh back option, HD Gas Cylinder

Max Miller
 maxmiller@mawhp.com
 336-964-5490

*50% deposit, Net 15
 Prepaid in full, get a 2% discount*

Place orders at orders@mawhp.com
Kool Foam standard on all 24/7 models

The Tank

	24/7 Seating		Arms			Fabric	COM/COL Vinyl	Leather
674-19-3-34-21	Low / Mesh Back / Uph seat	Swivel & Height Adj. Only	HD H&W	270 lbs		\$950.00	\$1,000.00	\$1,100.00
675-16-3-34-21-M	Low / Uph Back / Mesh seat	Swivel & Height Adj. Only	HD H&W	350 lbs		\$1,205.00	\$1,410.00	\$1,545.00
675-19-3-34-21	Low / Uph. back	Swivel & Height Adj. Only	HD H&W	350 lbs		\$1,205.00	\$1,410.00	\$1,620.00
680-19-3-34-21	Low / Mesh back	Swivel & Height Adj. Only	HD H&W	350 lbs		\$1,100.00	\$1,310.00	\$1,567.50
695-19-3-34-23	Low / Uph. back	Swivel & Height Adj. Only	HD H&W	500 lbs		\$1,362.50	\$1,467.50	\$1,725.00
696-19-3-34-23	Low / Mesh back	Swivel & Height Adj. Only	HD H&W	500 lbs		\$1,310.00	\$1,415.00	\$1,672.00
Enhancements:	On time Embroidery Setup		\$120.00	Seat slip cover		\$56.00		
	Embroidery logo ea chair		\$80.00	Back Slip Cover		\$56.00		
	Casters each		\$5.00	Bumper guard (suffix -BG)		\$80.00		
	specify 75 or 55 mm carpet or solid flooring		N/C	Arm Pad 16 arm (per pair)		\$30.00		
	Hard Floor Locking Casters ea. (not sitting)		\$5.00	No Arms specify in model# -0-		-\$25.00		
	Hard Floor Locking Casters ea. (sitting)		\$5.00	Kool Foam Seat Pads		\$48.00		
	Dispatcher of the year slip cover (specify which chair)		\$120.00	19 & 20 arm pads per pair		\$24.00		
	Dispatcher of the month slip cover (specify which chair)		\$120.00	#20 fixed arm available not on mesh		N/C		

Prices do not included shipping cost/FOB High Point, NC

All 24/7 chair ships fully assembled

**Floor glides available -GL at end of model # **

Leather - clean with soap and water, then use a leather conditioner 3 times a year to keep supple

*5 year warranty on all parts except upholstery.
 Lifetime warranty on frame construction, footring & base*



5 year warranty



Shown with optional neck roll and lumbar cushion

270 lbs Chair

3098-19-3-36-21

User size 5'4" - 5'10"
Maximum weight: 270 lbs
Seat Height from floor: 16" - 20"
Seat Depth: 16" - 18.5"
Seat Width: 21"
Dillon Balsa



3095-19-3-36-21-HR

User size 5'4" - 5'10"
Maximum weight: 270 lbs
Seat Height from floor: 16" - 20" (with headrest add 6")
Seat Depth: 16" - 18.5"
Seat Width: 21"
Dillon Lipstick

4195-16-3-36-21-HR

User size 5'4" - 5'10"
Maximum weight: 270 lbs
Seat Height from floor: 16" - 20" (with headrest add 6")
Seat Depth: 16" - 18.5"
Seat Width: 21"
All Mesh



• Height & angle adjustable

• Back height adjustment
Back angles forward and backward

• Back angle adjustment

• Tension wheel adjustment

• Pneumatic height lift

ALL MESH

• Seat depth adjustment

• Gel armpad slides forward to backwards

• Height & width adjustable

• Free floating or infinite locking positions for entire chair

Max Miller
 maxmiller@mawhp.com
 336-964-5490

*50% deposit, Net 15
 Prepaid in full, get a 2% discount*

Place orders at orders@mawhp.com
 Kool Foam standard on all 24/7 models

Logo included no upcharge

Marcella

	24/7 Seating		Arms			Fabric	COM/COL Vinyl	Leather
3095-19-3-36-21		Synchro Tilt	HD H&W	270 lbs	Mesh back/Uph seat	\$1,395.00	\$1,425.00	\$1,572.00
3096-19-3-36-23		Synchro Tilt	HD H&W	270 lbs	Mesh back/Uph seat	\$1,445.00	\$1,475.00	\$1,600.00
3097-19-3-36-21	Low Back	Synchro Tilt	HD H&W	270 lbs	Fully Upholstered	\$1,500.00	\$1,550.00	\$1,700.00
3097-16-3-36-21-M	Low Back	Synchro Tilt	H&W- Sliding	270 lbs	Uph Back / Mesh seat	\$1,500.00	\$1,550.00	\$1,700.00
3097-19-3-36-23	Low Back	Synchro Tilt	HD H&W	270 lbs	Fully Upholstered	\$1,550.00	\$1,650.00	\$1,800.00
3098-19-3-36-21	Medium Back	Synchro Tilt	HD H&W	270 lbs	Fully Upholstered	\$1,550.00	\$1,600.00	\$1,800.00
3098-16-3-36-21-M	Medium Back	Synchro Tilt	H&W- Sliding	270 lbs	Uph Back / Mesh seat	\$1,550.00	\$1,600.00	\$1,800.00
3098-19-3-36-23	Medium Back	Synchro Tilt	HD H&W	270 lbs	Fully Upholstered	\$1,600.00	\$1,650.00	\$1,850.00
3099-19-3-36-21	High Back	Synchro Tilt	HD H&W	270 lbs	Fully Upholstered	\$1,600.00	\$1,700.00	\$1,900.00
3099-16-3-36-21-M	High Back	Synchro Tilt	H&W- Sliding	270 lbs	Uph Back / Mesh seat	\$1,600.00	\$1,700.00	\$1,900.00
3099-19-3-36-23	High Back	Synchro Tilt	HD H&W	270 lbs	Fully Upholstered	\$1,650.00	\$1,750.00	\$1,900.00
All Mesh								
4195-16-3-36-21		Synchro Tilt	H&W- Sliding	270 lbs	All Mesh	\$1,125.00		

Enhancements:				
	Black, Red, Blue & Beige stitching available must specify	N/C	Arm Pad 16 arm (per pair)	\$30.00
	Large Neck Roll Cushion	\$75.00	Mesh Headrest (Suffix -HR)	\$100.00
	Smaller Neck Roll Cushion	\$65.00	Lumbar Pillow	\$85.00
	Back Slip Cover for Logo ea. Chair	\$85.00	No Arms specify in model# -0-	-\$25.00
	On time Embroidery Setup for Back Slip Cover	\$120.00	Kool Foam Seat Pads (blk fabric)	\$60.00
	specify 75 or 55 mm carpet or solid flooring	N/C	Kool Foam Back Pad (blk fabric)	\$75.00
	Dispatcher of the year slip cover (specify which chair)	\$120.00	Casters each	\$5.00
	Dispatcher of the month slip cover (specify which chair)	\$120.00	Bumper Guard -BG	\$80.00

Prices do not included shipping cost/FOB High Point, NC *All 24/7 chair ships fully assembled*

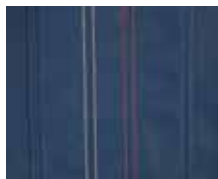
Leather - clean with soap and water, then use a leather conditioner 3 times a year to keep supple

5 year warranty on all parts except upholstery
 *Height adjustable back, *



3095-19-3-36-21-HR-Lumbar pillow

Black, Beige, Red and Blue stitching available



Marcella chair shown with logo on slip cover

24/7 Intensive use Seating

Maxine





881-16-3-36-21 Medium Back
 Shown in All Mesh
 Seat Height from floor: 16" - 20"
 Seat Depth: 18"
 Seat Width: 21"
 (will accommodate a 5'9" person)



Shown with optional headrest



880-19-3-36-21 Medium Back
 Shown in Dillon Nimbus
 Seat Height from floor: 16" - 20"
 Seat Depth: 18"
 Seat Width: 21"
 (will accommodate a 5'9" person)

Maxine

270 lbs series

24/7 Seating

					Fabric	COM/COL Vinyl	Leather
880-19-3-36-21	Mesh Back Uph. Seat	Synchro Tilt	270 lbs	accommodates up to 5'9"	\$950.00	\$1,000.00	\$1,100.00
881-16-3-36-21	Mesh back and seat	Synchro Tilt	270 lbs	accommodates up to 5'9"	\$975.00		
Enhancements:	Vinyl Optional Head rest both model #'s		\$100.00				

Mesh only

Prices do not include shipping cost/FOB High Point, NC

All 24/7 chair ships fully assembled

Leather - clean with soap and water, then use a leather conditioner 3 times a year to keep supple

5 year warranty on all parts except upholstery

***New lumbar pillow included no upcharge**

m

MILLER at WORK

w

m

MILLER at WORK

w



No charge on all Felix Chairs for Custom Embroidered Logos



"I like being able to adjust them to fit what I like. I don't have issues after a 12 hour shift, personally, regarding comfort or back pains either".

William E. Martin, Jr.
E-911 Director
Culpeper County Public Safety Communications Center



Marvin W Kelley Executive Director for McMinn County 911, "demands great products that are American made. That is exactly what Max Miller at Miller at work provides. In a dispatch setting 24/7 Seating is most important for employee comfort. *The Service and Sales of Miller at Work are the very best!*"

American Made in
HIGH POINT, NC



MILLERATWORK.COM 336.883.1302
1810 Albertson Rd • High Point, NC 27260