

TECHNICAL NOTE

MIDCHES PROFESSIONAL SERVICES



Manufacturer: Bosch Security Systems

Technical Note Date: April 11, 2021

Hardware Platform: Divar IP 7000 AIO, DIP-7GRSN-P6

Firmware/Software Version(s): n/a

Technical Problem:

Bosch Divar IP 7000 AIO hardware is no longer shipped with a dedicated graphics card. This is due to the unit having the options to be used as a storage appliance and not as a primary user interface for the system. When used as the primary interface for the system or when multiple video feeds are desired to be viewed locally at the Divar IP 7000 AIO, a separate graphics card kit DIP-7GRSN-P6 must be purchased and installed. This kit also comes with an audio card.

Solution Summary: Order the additional graphics card part number DIP-7GRSN-P6 and install. **NOTE:** If HDMI connectivity is required, you will need to purchase an additional mini-display port to HDMI adapter(s) separately.

Solution Process:

1. Open the top of the unit by cutting the warranty seal and removing the two side screws that keep the lid in place.



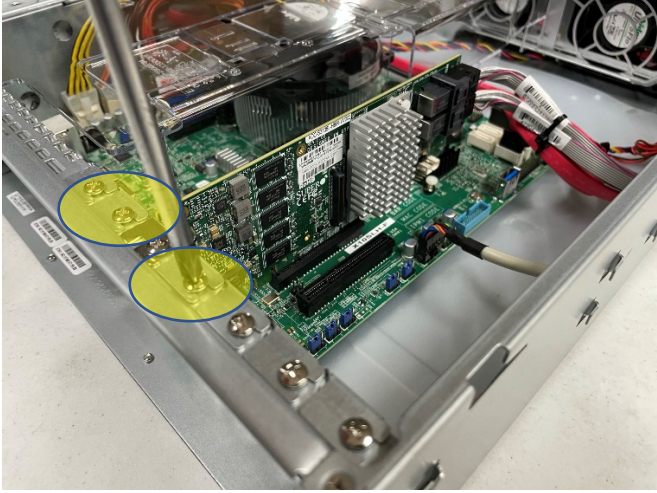
2. Remove the contents of the graphics card kit.



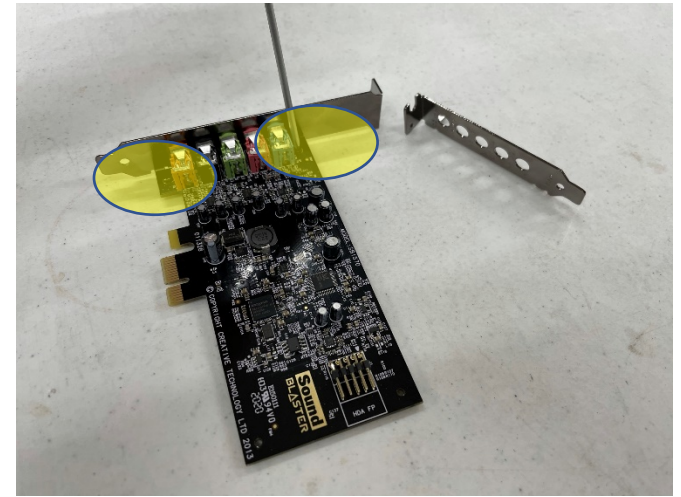
NOTE: Solutions to any technical problem should be thoroughly discussed prior to implementation. User interface, storage, device functionality, integration of third-party systems, and other software or hardware may be impacted by making changes to a system. Chesapeake and Midlantic Marketing is not responsible for and assumes no liability for loss of functionality, technical complications, loss of data, or any other expected or unforeseen circumstance related to use of this document or its content.



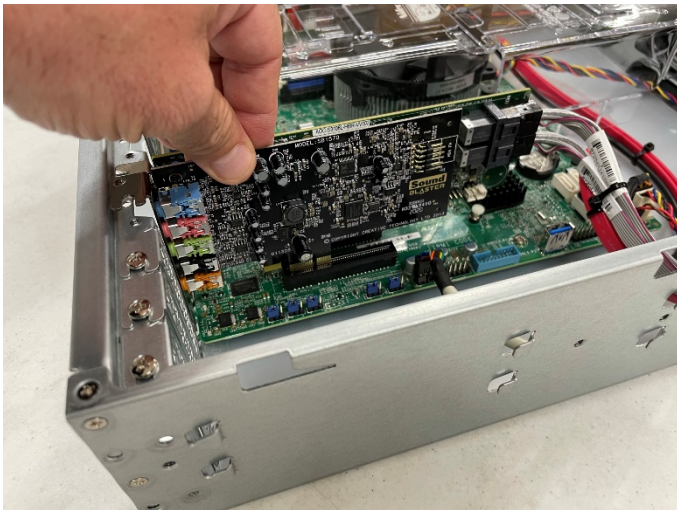
3. Remove the slot access plates on both sides of the existing card on the board.



4. Depending on the RU height of your Divar IP 7000 AIO, you may need to remove and replace the card holders for the video and audio cards.

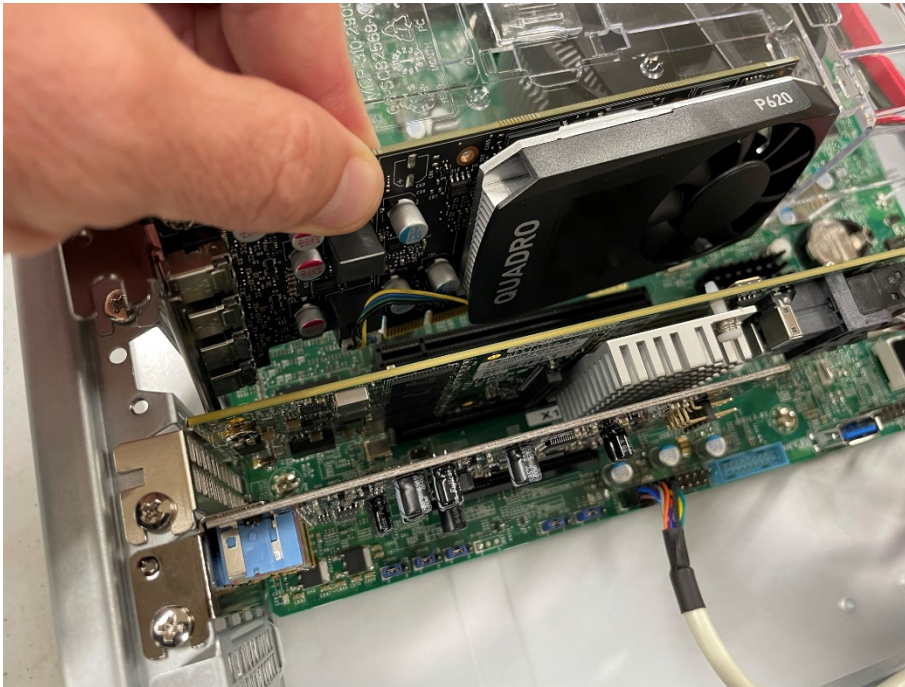


5. Carefully insert the audio card into the appropriate slot, to the right of the existing card. Secure the card in place with the screw.



NOTE: Solutions to any technical problem should be thoroughly discussed prior to implementation. User interface, storage, device functionality, integration of third-party systems, and other software or hardware may be impacted by making changes to a system. Chesapeake and Midlantic Marketing is not responsible for and assumes no liability for loss of functionality, technical complications, loss of data, or any other expected or unforeseen circumstance related to use of this document or its content.

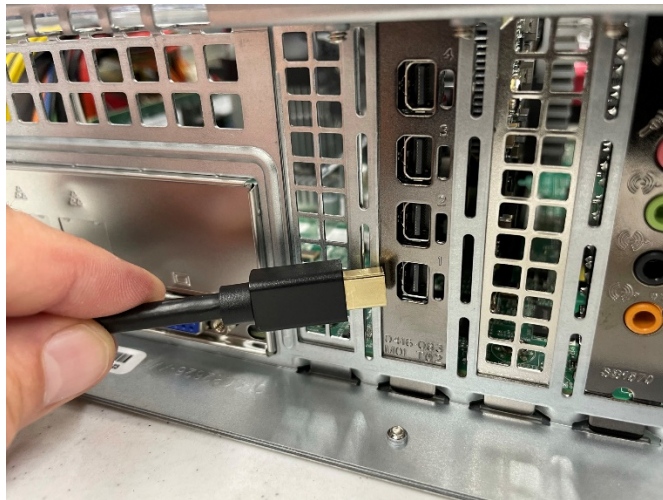
- Carefully insert the graphics card into the appropriate slot, to the left of the existing card. Secure the card in place with the screw.



- Replace and secure the unit lid.



- Select the video display adapter(s) you desire to use. Insert into the mini-display port(s).



- Once powered, Windows will discover the two new cards and install the appropriate drivers for them.

NOTE: Solutions to any technical problem should be thoroughly discussed prior to implementation. User interface, storage, device functionality, integration of third-party systems, and other software or hardware may be impacted by making changes to a system. Chesapeake and Midlantic Marketing is not responsible for and assumes no liability for loss of functionality, technical complications, loss of data, or any other expected or unforeseen circumstance related to use of this document or its content.