

Gateway Assembly Guide

For the installation of an arbn well gateway

[draft]

Date of Issue: 08 March 2021

Version: 1.5

Authors:

Olivia Nile Sobek, PhD

Graeme Jephson, MEng, ACIBSE

Parag Rastogi, PhD, CEng, MCIBSE

Gateway Type Check

This guide is meant for the following gateway model:



If you have the following gateway, see **Gateway Assembly Guide v 1.0**:



How to Read This Document

This document is intended for owners of standard arbn well installations. It describes how to assemble, install, and maintain the gateway that comes with your arbn well system. The mounting instructions should be followed as closely as practical. Following these guidelines is not a guarantee of certification by any certifying body or standards, nor the achievement of points. While arbnco maintains these documents with care and regularly updates them with the newest scientific guidelines, errors and misunderstandings can occur. If you are unclear about anything described in this document or need any other help with your arbn well system, please email well-support@arbnco.com. The guidelines in this document are not intended to be part of a professional code of practice, codes, standards, or statutory requirements. Happy sensing!

Contents

1. Necessities Checklist..... 1

2. Assembly Steps 1

1. Necessities Checklist

To assemble the arbn well gateway, you will need the following:

- ❖ Main gateway body (grey).
- ❖ LoRa, 4G, and WiFi antennas.
- ❖ Region-specific power cable.
- ❖ A 5mm hex/Allen key to open the gateway and insert a SIM card (if not in your box, please purchase one from any hardware store).
- ❖ A data-only SIM card for the gateway, with at least 1GB of data (if not provided, please purchase a SIM card from any provider).
- ❖ An unlocked phone or tablet in which you can access the SIM.

2. Assembly Steps

The steps below describe how to set up your gateway. They include instructions to fill out a 'deployment spreadsheet' or 'deployment form'. If that has already been done for you by an arbnco engineer or partner, you can ignore these instructions.

1. Open the arbn well gateway box.



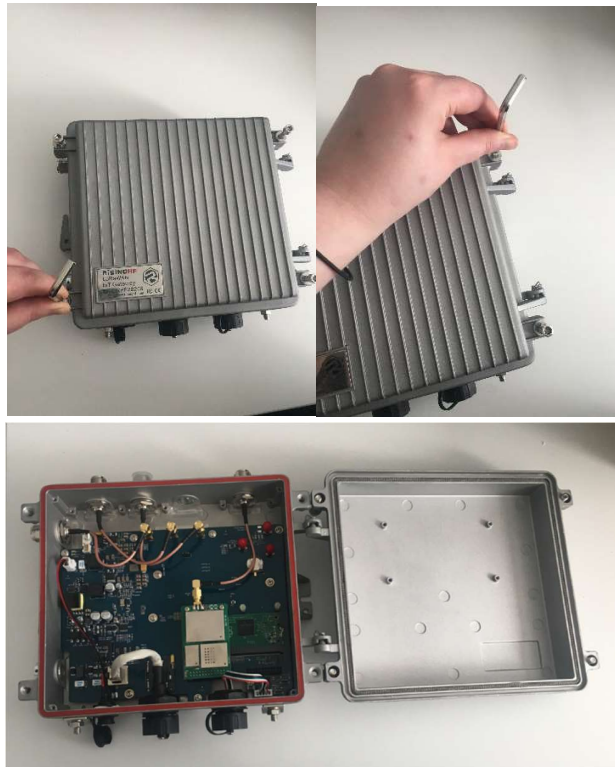
2. Remove the gateway device and the LoRa, 4G, and WiFi antennas, and the box containing the power cable. Unless otherwise specified, the remaining items in the gateway box can be ignored.



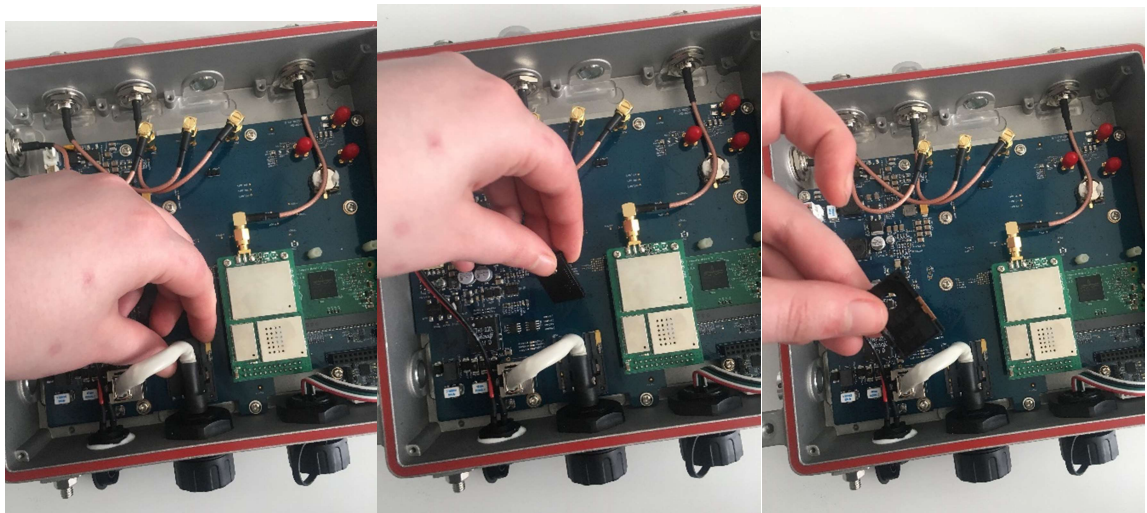
3. Make note of the 'MacAddr' on the sticker on the side of the gateway. This is the gateway key (which should match the hand-written gateway key on the outside of the gateway box) *and should be noted on the deployment spreadsheet.*

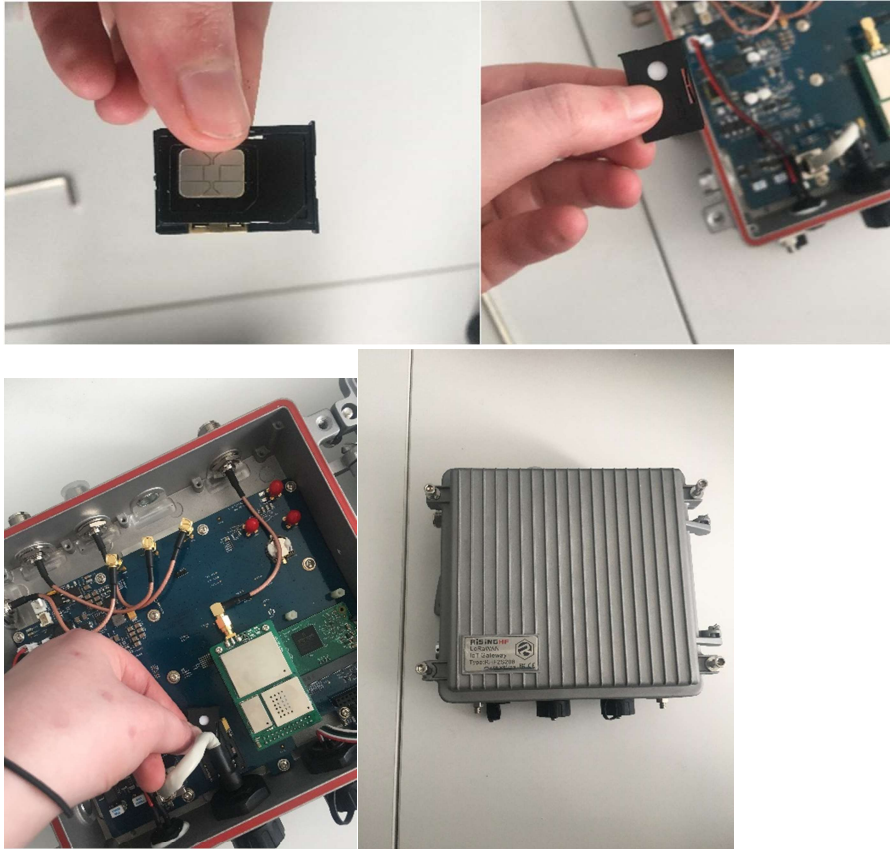


4. Using the hex/Allen key, remove the 4 hex-socket screws on the faceplate of the gateway to open the device.



5. Insert the provided SIM card into a phone or tablet. Wait for it to find a network. Once it has logged into a network (you will see the name of a network appear, with the signal bars), you can pop the SIM back out.
6. Locate the SIM card slot and push the yellow release spring to release it. Turn the SIM card holder over and insert your SIM card with the contact area facing upwards and the cut corner facing in the correct position. Flip the SIM card holder back over and push the SIM card holder back into the slot until it locks into place and replace the gateway's faceplate.





7. Connect the long LoRa antenna to the marked 'LoRa' port on the top of gateway by pushing and then screwing it into place, ensuring it is screwed on firmly and straight.
This must be done before powering on the gateway.



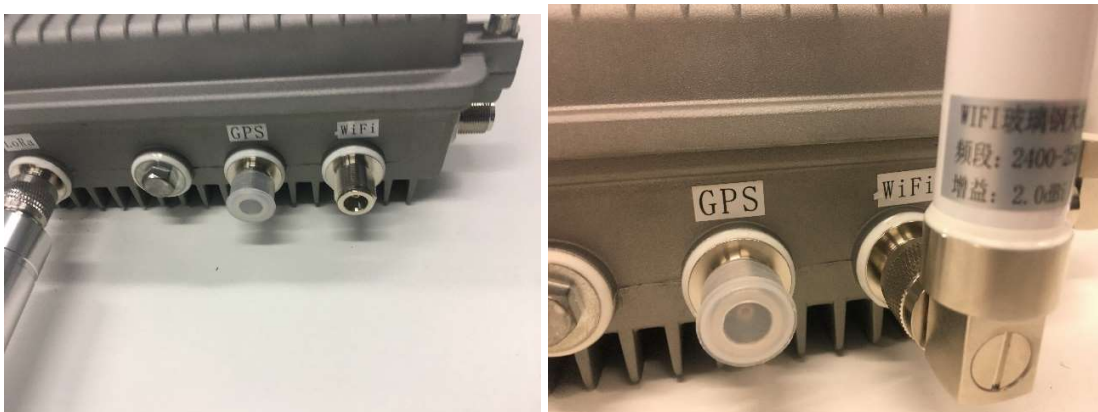
8. Locate the stickers on the 4G and WiFi antennas to identify which is which (the top left corner of the sticker will indicate either '4G' or 'WiFi').



9. Connect the 4G antenna to the marked 'LTE' port on the side of the gateway by pushing and then screwing it into place, ensuring it is screwed on firmly and straight.
This must be done before powering on the gateway.



10. Connect the WiFi antenna to the marked 'WiFi' port on the top of the gateway by pushing and then screwing it into place, ensuring it is screwed on firmly and straight.
This must be done before powering on the gateway.



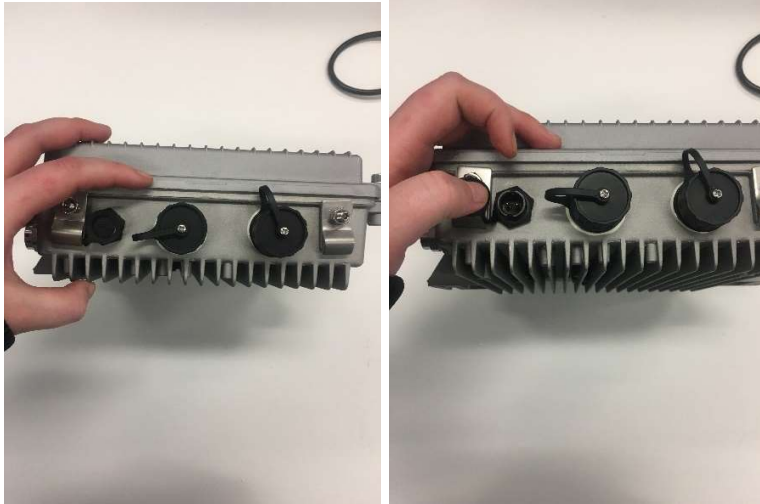
11. Make sure that all of the antennas are securely in place.



12. Remove the power cable from the box and connect it to a wall outlet.



13. Uncover the power port on the bottom of the gateway.



14. Push the end of the power cable into the power port of the gateway and screw into place.



15. The gateway is ready to be attached to its desired location using the supplied Command Strips, and the gateway and arbn well devices should start reporting to the arbn well platform (it may take 30-40 min for the gateway to register as online on the platform).