

Grand in **SIZE**. Grand in **STYLE**.  
Grand in **POSSIBILITIES**.



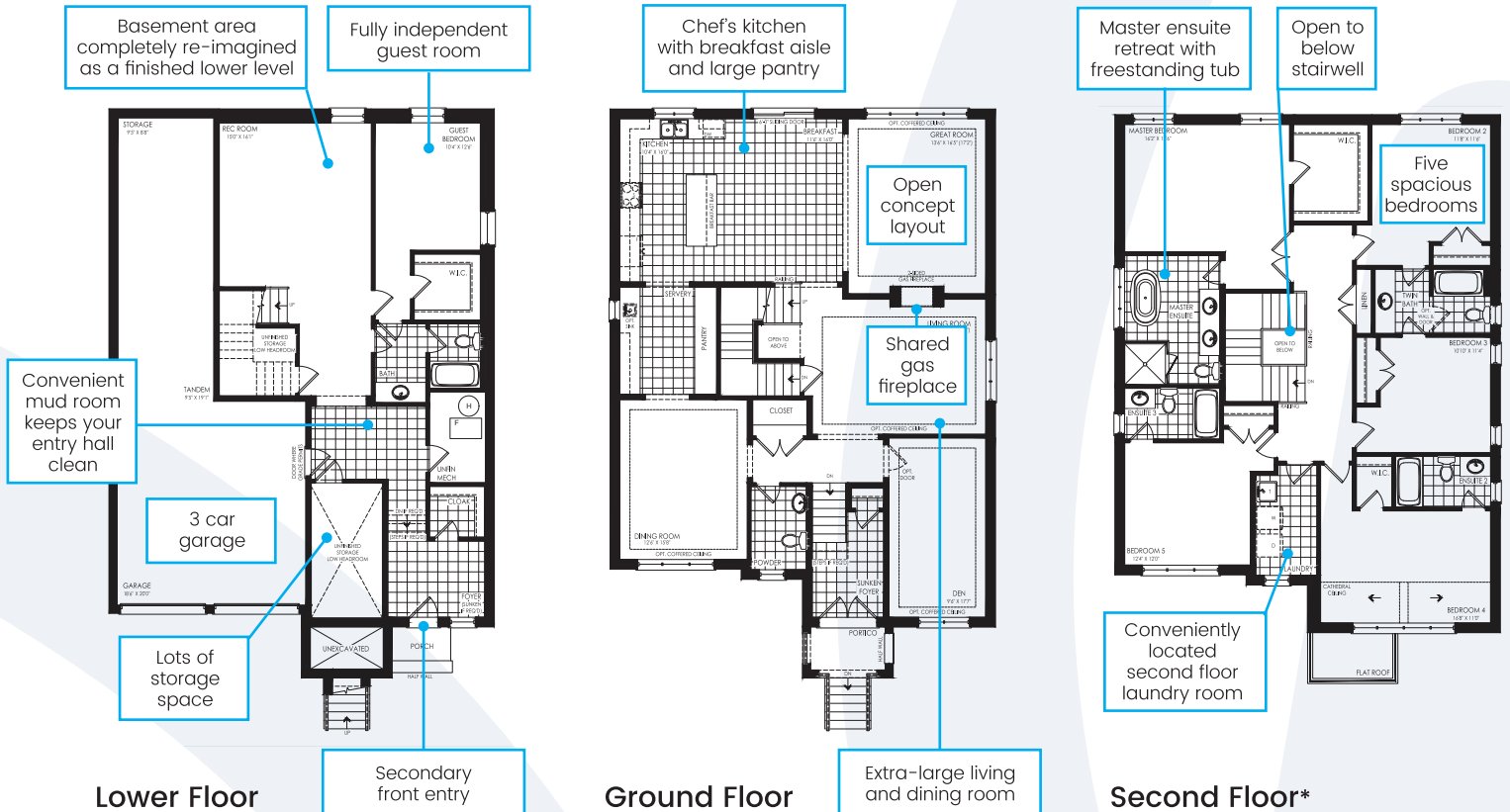
INTRODUCING THE  
**GRANDVIEW COLLECTION**  
from **\$1.3M**

Brookfield's design team went above and beyond to create new designs that are unique and versatile, just like your family needs.

And now we are proud to announce our 3 brand new models in Pathways, Caledon East. Homes with clever solutions for the modern days: with all the space you deserve, and room to adapt to your family dynamics in the future.

# EXPERIENCE THE FAIRFORD

The Fairford is a generously spacious 46' single in Caledon East with a refined, highly functional design for the modern family. This home features a ground floor living space with its own entrance that can be used as an in-law suite, home office or a rental unit. Enjoy the open concept floor plan with a well-sized kitchen, a gorgeous two-sided fireplace located between the great room and living room and a selection of enhanced features and finishes.



**A BRAND NEW RELEASE WITH GRAND INCENTIVES:**  
**\$50K in bonus features**  
**Extra \$25K to spend at our Inspiration Studio**

**BOOK A PRIVATE APPOINTMENT**

647.697.6497 | [pathways@brookfieldrp.com](mailto:pathways@brookfieldrp.com)

**Brookfield Residential Presentation Centre**

12 Henry Wilson Dr, Caledon, ON L7C 0H3

**Hours of Operation**

Monday to Sunday | By Appointment Only

**Brookfield**  
Residential

\*Floor plans based on Style B. Please view our website to see floor plan variations of Styles C & D.