

About Setlog & OSCA CSR

- Supply Chain Management software since 2001
- +150 customers and brands
- 30.000 suppliers, manufacturers, factories & subcontractors
- +92 countries

OSCA CSR: With Setlog for sustainable procurement and a fair supply chain

The Supply Chain Act requires fair production conditions for all parties involved in globalized procurement. However, ensuring sustainability and compliance brings its own challenges for companies whose supply chains require international production and procurement. Sustainable conditions throughout the supply chain require the exchange of information from known partners across various tier levels. This is where Setlog's Corporate Social Responsibility software OSCA CSR comes in, allowing for easy digital control without complicated Excel spread-sheets.



OSCA Corporate Social Responsibility

With OSCA CSR, you create both security and transparency in your production by connecting all partners in the supply chain and always maintaining control over your CSR measures. Audits can be created according to your own requirements, scheduled at any time and tracked. Afterwards, you receive all reports simply at the push of a button, since testing institutes work in OSCA CSR just like all partners in your supply chain. Together with you, we will assemble the optimal system for your supply chain needs from the individual modules of OSCA CSR.

Here you can find an overview of all modules and functions of OSCA CSR:

Audit Workflow

Get an overview of which partners are audited and whether validity periods are expiring. The Audit Workflow alerts you automatically and allows you to initiate new audit cycles.

Corrective Action Plan

Guarantee due diligence globally with a dedicated workflow to manage deficiencies, corrective actions, and their follow-ups.

Supplier Onboarding & Approval

Quickly approve partners via an onboarding workflow taking into account all saved information.

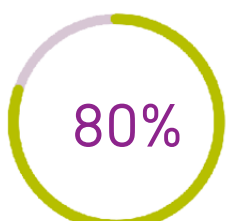
Supplier Surveys

Create custom survey templates to transparently scan your partners' transactional data.

Policies

Share your policies and codes of conduct with your partners on one platform and have them digitally countersign directly from there.

RESULTS IN NUMBERS



Less emails

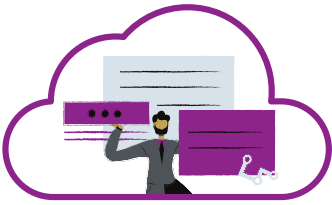


Transparent audits and production conditions



Reports at the push of a button

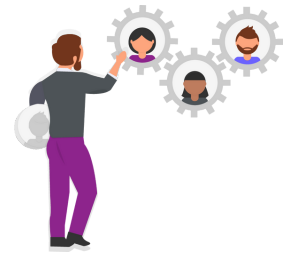
YOUR BENEFITS USING OSCA CSR



Global, cloud-based access to all procurement-related documents, audit data and reports for you and all supply chain partners



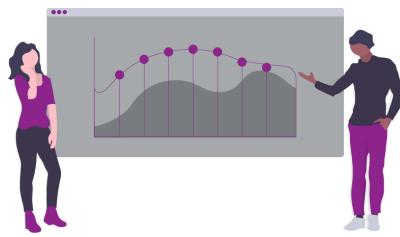
Central dashboard displaying all critical and open issues, audits, corrective actions and certificates



Detailed profile management for comprehensive administration of all tier levels



Early warning on compliance or milestone breaches



Risk management across all stages of your supply chain through a detailed assessment and monitoring system



Management of due diligence and code of conducts enable proactive action

OSCA CSR IN PRACTICE

Want to learn more about implementing OSCA CSR? In our case study "Leverage for better working conditions", you will learn first-hand why KiK chose OSCA and how the textile retailer was able to digitize more than 1000 audits per year with our Corporate Social Responsibility software:



[Get the KiK Case Study here!](#)

SETLOG'S SOFTWARE SOLUTIONS



Setlog's cloud-based software solutions enable the optimization of your supply chain processes tailored to your needs. We distinguish between five different solutions, each of them covering one section of the supply chain: OSCA SRM, OSCA CSR, OSCA Procurement, OSCA Global Logistics and OSCA QC. By combining individual solutions and their modules, we are able to provide you with the centralized control of your entire supply chain and offer software that is precisely tailored to your requirements.

CONTACT US

Setlog Corp.
420 Lexington Avenue,
Suite 300
New York, NY 10170, USA
T +1 212 209 3969

Setlog GmbH
Alleestrasse 80
44793 Bochum
Germany
T +49 234 720 285 00

Setlog GmbH
Salierring 32
50677 Cologne
Germany
T +49 221 466 890 0

E-Mail: info@setlog.com

www.setlog.com/en/