



About Setlog

- Supply Chain Management software since 2001
- +150 customers and brands
- +40.000 users worldwide
- +15.000 supply chain partners
- +92 countries

Setlog knows the challenges of inbound logistics

Increasing complexity in global supply chains has changed the requirements for logistics, communication and trade. This creates new challenges for any company whose supply chain requires international production and procurement. Setlog knows the obstacles involved and is considered a digital pioneer with its supply chain management software OSCA, specializing in inbound logistics.



OSCA

OUR SOFTWARE SOLUTIONS

In order to provide you with an optimized software adapted to your supply chain needs, we divide OSCA into 5 solutions: OSCA SRM, OSCA CSR, OSCA Procurement, OSCA Global Logistics and OSCA QC. Together, we assemble the optimal solution for the central management of your inbound logistics.



OSCA SRM

OSCA SRM covers the relationship between customers and suppliers, from onboarding to document management and reporting. In the system, you can directly request price quotes and both select and manage your suppliers easily and transparently. Digitize your supplier management for full transparency across the entire network.

Our CSR solution enables you to communicate centrally with auditing institutes and partners. In addition, you will be able to digitally coordinate and document social and qualitative audits. This way, you ensure that working and production conditions comply with the required laws and standards. You also maintain an overview of your CSR activities.



OSCA CSR



OSCA Procurement

OSCA Procurement maps your entire procurement and sourcing processes for you. In addition to the communication and coordination of your purchase orders, all updates and schedules are integrated into the system and displayed in real time. This gives you full control over your procurement process and allows you to take action immediately if necessary.

View all logistical processes within your supply chain transparently in one system with OSCA Global Logistics. By connecting your partners to the platform, you coordinate all shipping documents, packing lists, freight prices, bookings and transportation quickly and efficiently, managing them in a single dataset.



OSCA Global Logistics



OSCA QC

With our solution for optimized quality monitoring, OSCA QC, you minimize the quality risks of your products. Order tests from your laboratories which are connected to the system; and manage test parameters and results digitally, in a planning-safe manner in cooperation with your inspectors and suppliers.

RESULTS IN NUMBERS



Reduction of freight costs

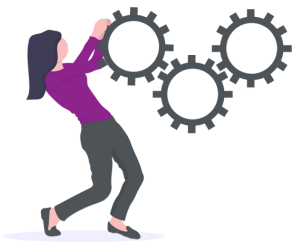


On-time delivery



Elimination of Excel spreadsheets

YOUR BENEFITS



Digitization and reduction of manual work



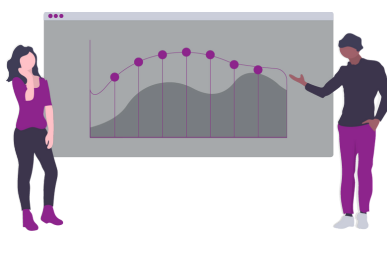
Higher adherence to schedules as well as better planability and reaction speed through an early warning system and KPI dashboard



Seamless monitoring and communication through connection of all supply chain partners



Guarantee of fair and sustainable working and production conditions



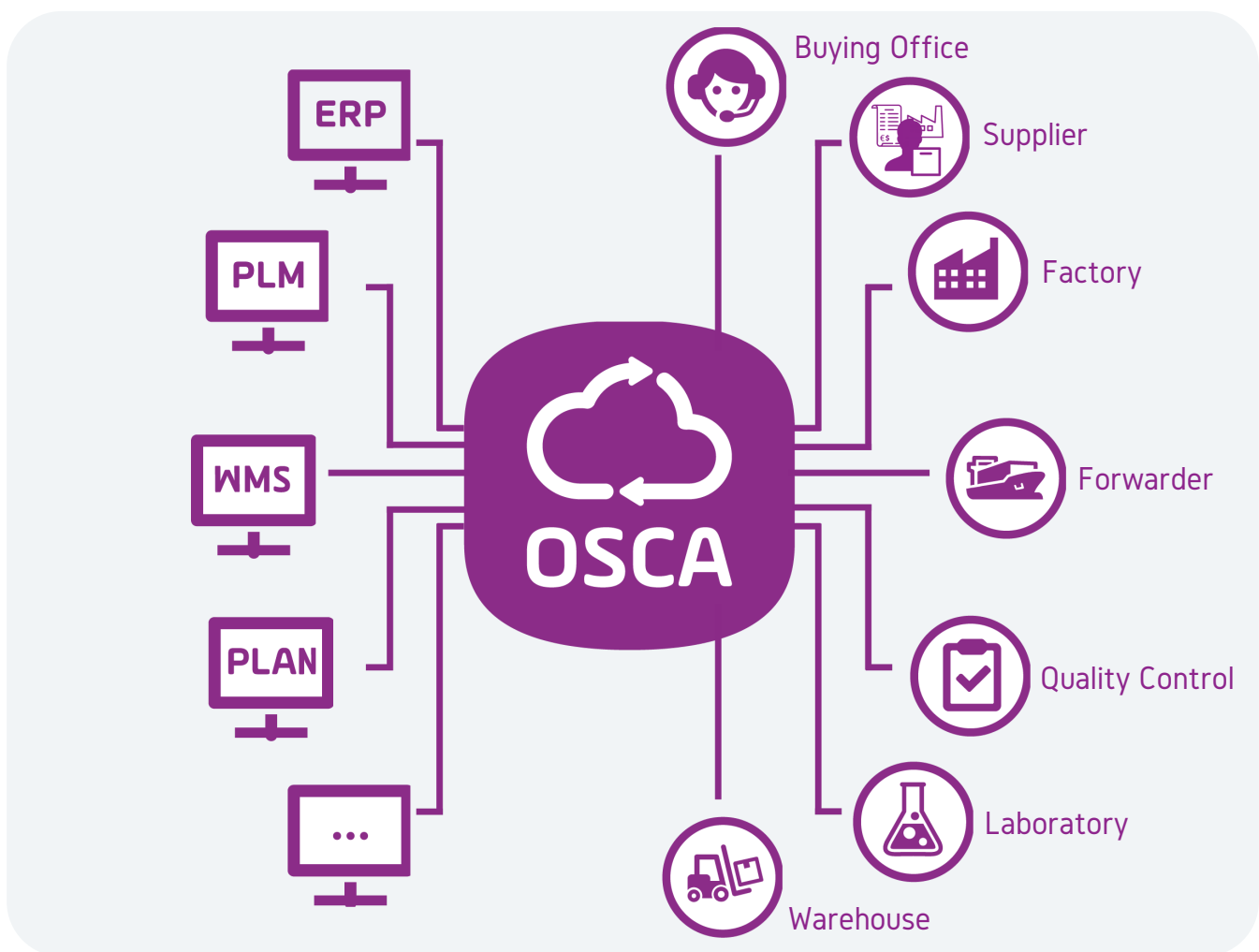
Full transparency of all processes, data, communication and documents



Reduction of costs and lead times and elimination of media discontinuities



OSCA AS AN INTEGRATION PORTAL



As integration portals, all OSCA products enable seamless integration into your existing IT landscape. ERP, PLM, WMS and planning systems as well as all other common systems can be easily connected via interfaces, connecting all supply chain partners either manually or via APIs. OSCA thus becomes a single source of truth without media breaks or delays and allows the control of a central data pool.



CONTACT US

Setlog Corp.
420 Lexington Avenue,
Suite 300
New York, NY 10170, USA
T +1 212 209 3969

Setlog GmbH
Alleestrasse 80
44793 Bochum
Germany
T +49 234 720 285 00

Setlog GmbH
Salierring 32
50677 Cologne
Germany
T +49 221 466 890 0