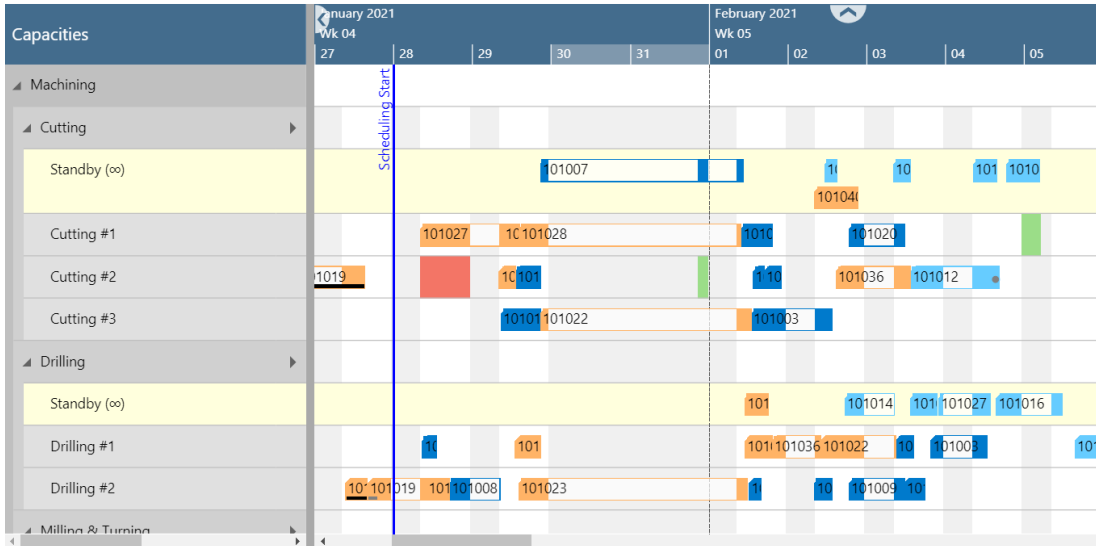




# VISUAL ADVANCED PRODUCTION SCHEDULER (VAPS)

NETRONIC VAPS  Open in Excel | Actions Fewer options

VIEW - VISUAL ADVANCED PRODUCTION SCHEDULER



## BENEFITS OF THE VAPS

- Intuitive interface
- Seamless integration with Standard Business Central
- Immediate visualization of data
- Informed decision making
- Allows greater focus on priorities

Do you lack transparency on what is happening on your shop floor?

Do you seek an effective tool to quickly schedule new production orders while seeing their impact on your overall schedule?

Do you want to get back the control over your schedule?

The VAPS is the answer to these questions.

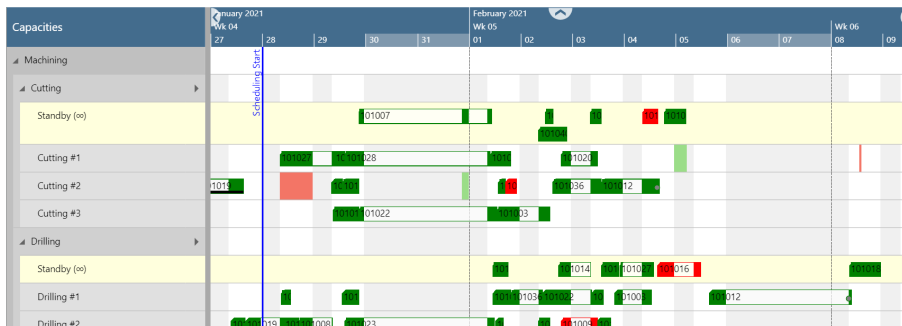
## FUNCTIONS OF THE VAPS

- Combines data from production orders, operations, work and machine centers tables
- Forward scheduling in finite capacity
- Make use of alternative machine centers, standby resources and subcontractors
- Considers material availability
- Allows planning on simulations before going live
- Seven useful color views
- Six helpful scheduling instruments

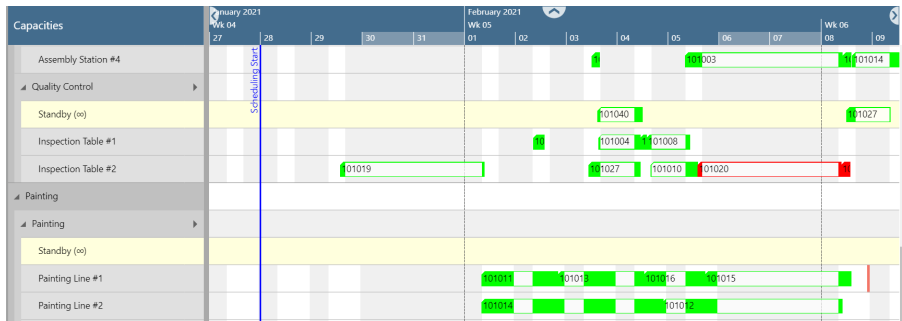
**WHAT IS THE VAPS?**

**The Visual Advanced Production Scheduler (VAPS) is the first and only finite capacity scheduler for Business Central's manufacturing module.**

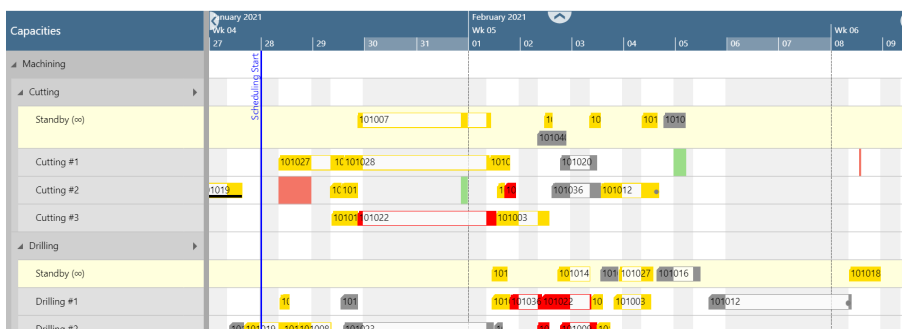
The VAPS brings operational agility to your shop floor with its finite capacity scheduler paired with a visual drag&drop scheduler.



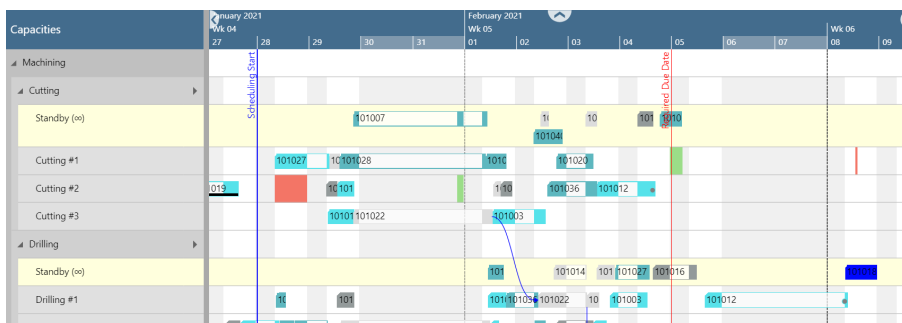
Availability view – Look ahead on the material availability



Progress view – Effortlessly see delayed operations



Wait times view – Ease the recognition of bottlenecks causing late orders



Item view – Identify the type of item being produced by color

## SCHEDULING INSTRUMENTS

- **Drag & drop**  
Manually control the movement of any operation
- **Apply standard routing**  
Adds one new production order to the schedule without impacting production orders already scheduled using the default machine centers when free
- **Apply alternative routing**  
Adds one new production order without changing the set scheduler by considering all allowed alternative machines.
- **Schedule successors**  
Minimizes the cycle time of a production order – pushing other operations as required
- **Fill idle times**  
Increases schedule your operations wherever a empty time slot is suitable
- **Add all**  
Efficiently add all of your new production orders to the schedule

Ready to take control with a **Visual Scheduler?**



**Book a demo!**

## VAPS TECHNICAL DETAILS

- Exclusively for Business Central on prem and cloud version
- Designed for data from the Manufacturing Module
- Real-time connection as a page in BC

- Data-driven visualization
- Multi-user support



**Get the free eBook!**